

about our friends

calendar

Project Graduation 2001 — Parents of students in the class of 2001 are encouraged to attend a meeting at **7 p.m. Tuesday** in the Goodland High School cafeteria to learn about financial details and committee needs for Project Graduation 2001. Please bring pictures of your child as a senior, as a baby or preschooler and in groups with classmates, plus a couple of your child's favorite recipes.

Card Party — The Thursday Night Together singles group will meet at **6:30 p.m. Thursday** at Marie Edwards' dance hall in the Armstrong Addition. The group will play cards. Bring finger food. For questions, call 899-2733.

Valentine's Dinner — The Senior High Youth Group from the United Methodist Church in Goodland is selling tickets to their Valentine's dinner to be held **Sunday** in the Fellowship Hall of the church. You have a choice of either chicken or steak. Tickets must be bought in advance. For information or to buy tickets, contact any youth group member or call the church office at 899-3631 or Rich and Lyn Hoffman at 899-6389.

activities

TOPS Meeting — Take Off Pounds Sensibly meets at **5:30 p.m. Mondays** at North School. Weigh-in is at 5 p.m.

Aerobics Classes — Morning aerobics classes are available at **5:30 a.m.** with Tina Tompkins, and at **8 a.m.** with Marilyn Imel, **Monday, Wednesday, and Friday** at the Goodland Activities Center. A senior aerobics class for those who desire a less strenuous workout will be at **8 a.m. Tuesday and Thursday** with Imel. For questions, call 899-7242.

Carnegie Arts Center — Artwork by Goodland elementary students will be on exhibit through **Friday, Feb. 23**, at the Carnegie Arts Center in Goodland. One piece of artwork from each child in pre-kindergarten through sixth grade will be shown. The exhibit is sponsored by Doug and Jeanne Irvin and Brady and Jane Philbrick. The arts center is open from **10 a.m.-5 p.m. Tuesday through Friday** and from **1-4 p.m. Saturday, Sunday and Monday**.

Water Testing — A representative of the Northwest Local Environmental Protection Group will be available for a free well evaluation including testing well water for bacteria and nitrates. If you would like to schedule an evaluation or have other environmental concerns, call the Sherman County Health Department at (785) 899-4888.

photos needed

Photos are needed for a 2001 alumni reunion display to be put up next year at the High Plains Museum in Goodland. Any photos of Goodland classes or individuals will work and are needed, as soon as possible, so that work can begin on the display. For questions, stop by the museum or call 899-4595.

society donations

The Sherman County Historical Society has received positive response

to the proposed purchase of the Edythe Handy house. Your continued support is critical to the award of the grant request that is currently in progress. Tax-free pledges or donations may be made to the historical society at P.O. Box 684, Goodland, Kan. 67735 or by calling 899-6773.

books available

The 1901 "Life in Sherman County" books printed by the Sherman County Historical Society can be purchased at Knott Just Books or the High Plains Museum in Goodland.

alumni deadline

The deadline for alumni address labels to be turned in is **Monday, Feb. 19**. Alumni secretaries are asked to turn in updates by this date. The final deadline for the alumni directory will be Sunday, April 15. If you have questions, call Peggy Bahe at 899-5433.

support group

Anyone interested in forming a bipolar disorder support group, should call Virginia Tucker at 899-5696. The support group would be for the family and friends of those with the disorder, as well as the patients.

student news

Alex Evert, a 2000 graduate of Goodland High School, has been named to the Dean's Honor Roll for the fall semester at Hutchinson Community College. To be eligible, he earned a 3.50 to 3.99 grade point average. His parents are Steve and Marcia Evert of Goodland.

school menu

Tuesday — Macaroni and cheese with ham, beets, banana bread, apple salad and milk.

Wednesday — Barbecue meatballs, oven browned potatoes, green beans, hot roll, peach cobbler and milk.

Thursday — Creamed chicken over rice, broccoli and cauliflower, cinnamon bun, 1/2 orange and milk.

Friday — Tacos, shredded lettuce and cheese, diced tomatoes, tri-taters, cake and milk.

hospital report

Goodland Regional Medical Center Admitted on Friday: Brandie Smith, Goodland. **Saturday:** Karen Snider, Goodland; Patsy Arndt, Sharon Springs. **Sunday:** none.

Dismissed on Friday: none. **Saturday:** none. **Sunday:** Brandie Smith, Goodland.

Transferred: none. **Specialists for Tuesday:** Dr. Martin Rubinowitz, oncology/hematology; Dr. Kevin McDonald, urologist.

Hospital weekly volunteer schedule — **Tuesday** — Martha Gunderson, courtesy; Marj Crabb, a.m.; Beulah McClung, p.m. **Wednesday** — Marge Richards, p.m. **Thursday** — Jessie Owens, a.m.; Berna Biem, p.m. **Friday** — Ruth Morton, courtesy; Fern Hawks, a.m.; Harriette Smith, p.m.

animal shelter

Have you lost a pet? Call the Goodland Police Department at 899-4570. Are you interested in adopting a pet?

Call the Northwest Kansas Animal Shelter at 899-6464.

Found: Male black Labrador mix at 12th and Syracuse; young female Rotweiler mix at 19th and Commerce.

today in history

Feb. 5, 1901 — Yearly examinations of all Rock Island Railroad employees were held.

From The Goodland Republic/Information provided by The Sherman County Historical Society

area events

Tobacco Support Group — A tobacco quitters support group meets from **7-8 p.m., Central Time, every Wednesday** in the cafeteria of Citizens' Medical Center in Colby. Anyone who has a desire to stop smoking is urged to attend. For information, call (785) 462-8152.

Livestock Workshop — A livestock and resource management workshop will be held from **8:30 a.m.-4 p.m., Central Time, Thursday** at the Ramada Inn in Colby. Information will be given on nutritional needs of cattle, post drought range management, in-

ventorying ranch resources and possible solutions for profitable management. The cost includes lunch. For information or to register, contact Western Prairie Resource Conservation and Development at (785) 462-2602.

Head Injury Support — The next meeting of the Head Injury Support Group will be at **7 p.m., Central Time, Thursday** at the LINK office, 1204 Canterbury, Hays.

La Leche League — The La Leche League of Northwest Kansas will have an informal meeting called "How Tos and the Early Weeks" from **2-4 p.m., Central Time, Sunday, Feb. 18**, at the home of Sharon Shirley, 1820 W. Fifth, Colby. Mothers and their nursing babies, fathers, expectant mothers and any women wishing to learn more about breast-feeding are welcome to attend. For information, breast-feeding help or breast pump rental, call Connie Davis at (785) 462-7188.

crimestoppers

If you have any information about any crime, call the Goodland Area Crime Stoppers "Look Line" at 899-5665.

obituaries

Raymond J. Studer, Sr.

Raymond James Studer, Sr., 79, Dodge City, a former Goodland resident, died Thursday, Feb. 1, 2001, at Dodge City.

He was born Jan. 22, 1922, at Scott City, the son of Anna (Robrecht) and John Studer.

He attended school in Scott County. He served in the U.S. Army from 1942 through 1945. After that he moved to northwest Kansas.

He and Esther Anderson were married Aug. 19, 1946.

He was a farmer, carpenter and truck driver.

He was a member of Our Lady of Perpetual Help Catholic Church and the Veterans of Foreign Wars, both in Goodland.

His funeral service will be at 10:30 a.m. Tuesday at Our Lady of Perpetual Help Catholic Church in Goodland with Father Daryl Olmstead officiating. Burial will follow in the Goodland Cemetery.

A rosary will be said at 7 p.m. tonight at Koons Chapel in Goodland.

Friends may call from 3 to 8 p.m. to-

night at the chapel and before the service Tuesday at the church.

Survivors include five sons, Marvin Studer of Colorado Springs, Larry Studer of Parker, Colo., John Studer of Yuma, Ariz., Raymond J. Studer, Jr. of Sarasota, Fla., and Danny Studer of Lake Stevens, Wash.; two daughters, Janet Fikan and Jeanie Studer, both of Oklahoma City; 17 grandchildren; and five great-grandchildren.

He was preceded in death by his parents; a son, Keith; a sister, Lucy Hahn; and three brothers, Richard, Hubert and Mark.

Memorials may be given to the Goodland Veterans of Foreign Wars and left at Koons Funeral Home, 211 N. Main, Goodland, Kan. 67735.

Clarence L. Howard

Clarence L. Howard, a longtime Goodland resident, died Monday, Feb. 5, 2001, at the Goodland Regional Medical Center.

Services are pending with Bateman Funeral Home of Goodland.

A full obituary will appear when it becomes available.

Now is the time to review basics of turf grass management

Winter is a good time to review the basics of turf grass management. Let's begin with fertilization. All plants need 17 elements to survive, thrive and reproduce. Most of these are present in adequate quantities in the soil, water or air. Nitrogen (N), phosphorus (P) and potassium (K) are the three elements most commonly added in fertilizer because turf grass plants need larger amounts of these nutrients and they are readily depleted in the soil. Every bag of fertilizer has three numbers prominently printed on it. These numbers stand for the percentage, by weight, of nitrogen, phosphate (a form of phosphorus) and potash (a form of potassium), respectively.

Balanced and complete turf grass fertilizers will contain all three nutrients in a ratio which reflects the relative amounts needed by the turf. Typical ratios will be something like 4 N: 1 P: 2 K, or even 6 N: 1 P: 3 K. The point is that plants need nitrogen in the greatest quantity, somewhat smaller amounts of potassium, and



dana belshe

• ag notebook

even smaller doses of phosphorus. While many Kansas soils supply adequate amounts of phosphorus and potassium, nitrogen will almost always have to be added because soils don't supply it and it is regularly taken up and used by turf grass plants. For cool-season lawns, a good rule of thumb is to add nitrogen in September, November, and May to provide nutrients during optimum growth periods. Remember that the November application of nitrogen feeds the plant through early spring so fertilizing with nitrogen in March or April will weaken the root systems of turf grasses by causing a flush of growth. Similarly, fertilizing in late spring or summer will pull food reserves away from the roots and encour-

age summer stress.

What do fertilizer nutrients do for the plant? Briefly, nitrogen promotes growth and gives turf a healthy color. Without sufficient nitrogen, growth slows or stops and the lawn becomes yellowish. Too much nitrogen can overstimulate shoot growth at the expense of good root growth or may be flushed from the soil because it is highly mobile. When the root system is compromised, the turf becomes less drought and stress resistant.

Phosphorus is essential to produce strong root growth. It is particularly important for root development of new plantings. It is not readily flushed from the soil by watering and is either needed in smaller quantities or not needed at all, depending on soil test results.

Potassium is needed for overall hardiness and stress resistance in the turf. It also is mobile and may be flushed from

the soil by watering, but at a much slower rate than nitrogen. Kansas soils usually supply a considerable amount of phosphorus or potassium. So for either element, a soil test is the best way to determine how much, if any, nutrient is needed and should be performed before fall turf grass establishment and maintenance.

correction

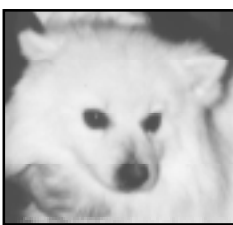
In the obituary for Clay J. Howard in the Jan. 29 issue of *The Goodland Daily News*, his date of birth was incorrect. It should have read June 24, 1979, instead of June 27, 1979.

☆☆☆☆☆
The Goodland Daily News will correct any mistake or misunderstanding in a news story. Please call our office at (785) 899-2338 to report errors. We believe that news should be fair and factual. We want to keep an accurate record and appreciate you calling to our attention any failure to live up to this standard.

Paw Print Press



The animals featured here need a home. Please call the Northwest Kansas Animal Shelter at (785) 899-6464 if you are interested in adopting or sponsoring (\$15) a pet on this page. Other animals are also available. You can make a difference in the life of a loveable cat or dog! "Thanks to you, I have a home!" — Harley, Holly, Mac, Suzie, Maggie, Bongo, Freckles, Sammy, Rusty, & many more.



Pepe
2 years, neutered male, American Eskimo, cute, friendly, loves attention.
Koons Funeral Chapel



Girl
1 1/2 years, spayed female, brown/mix, timid, great with dogs and people when she knows you. Needs patience.
In Memory of Studley



Otis
1 year, neutered male, Terrier/Mix, very friendly and loving, best friends with Ozzy.
Anon



Ozzy
1 year, neutered male, lab/mix, best friends with Otis.
A Friend of the NWKAS



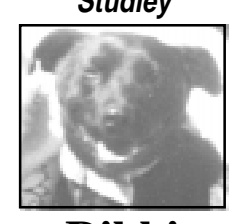
Jonesy
1 1/2 year, neutered male, Collie/Mix, shy, playful, when he gets to know you. Beautiful.
Chuck Lutters



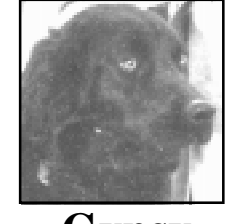
Sherman
2 year, neutered male, Lab/Mix, calm, friendly, great companion.
The Dog Spa Shawn Jarmin



J.P.
1 year, neutered male, Collie/Mix, shy but affectionate
Garcia's Home Furnishing & Appliance



Rikki
2 year, spayed female, Lab/Mix, likes to be the boss, very loving.
Pied Piper Video



Gypsy
2 year, spayed female, Spaniel/Lab Mix, great with people, good farm dog.
Judy Helm



Lacy
10 months, spayed female, Pointer, lively, timid, but quick to make friends
Vic & Carolyn Helmut



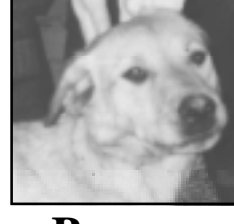
LeeAnn
10 months, spayed female, Pointers, lively, timid, but quick to make friends
Vic & Carolyn Helmut



Magic
1 year, neutered male, Lab/Mix, friendly, energetic, loves attention.
Kelley & Sandy Rodgers



Butkis
4 month, male, Lab/Mix, is going to be a big boy, very friendly.
Leo Townsend Construction



Barney
1 1/2 years, neutered, Lab/Mix, best friends with Beauty, would love to stay together.
Farris Manufacturing



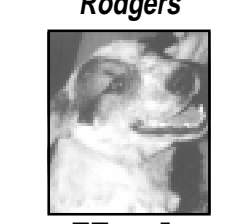
Beauty
1 1/2 years, spayed, Lab/Mix, best friends with Barney, would love to stay together.
Farris Manufacturing



Jimmy
2 yrs., neutered male, Lab/Mix, great with people, alert, was housebroken.
A Head of the Times Juanita Denning



Shep
2 yrs., neutered male, German Shep./Mix, very friendly, energetic.
Mikki Ricker



Hank
2 yrs., neutered male, Terrier/Mix, shy, housebroken.
Republican Valley Veterinary Clinic

Other pets available for adoption:
Sponsored by The Goodland Daily News

• Labs
• Lab/Mixes
• Australian Shep./Mixes
• Border Collie/Mixes
• Chow/Mixes
• Terrier/Mix
• Lots of Cats

To adopt any of us, call the Northwest Kansas Animal Shelter at (785) 899-6464.

February Romantic Get-Away Packages

Fine Dining at Candlelit Tables in the wine cellar for dinner
Deluxe Rooms with Full Breakfast
Roses in a Keepsake Mug, Hand-Dipped Chocolates, Champagne and a Spa Bath Basket

Claremont Inn
Stratton, Colorado
1-888-291-8910

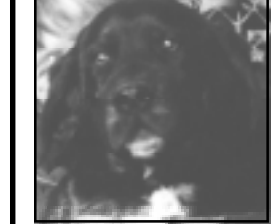
The NWKTS Office/Computer Technology Department is selling

Flowers & "Candy Sundaes" to support scholarships.

- Flowers wrapped or in a vase
- Hard or chocolate candy
- Place orders by February 7
- Delivery on February 14

February 14th
Don't Forget Valentine's Day!

Call (785) 899-7609



Louie
6 months, neutered male, Mastiff/Mix, high energy, friendly, will be big.
Clyde & Jan Lambertz



Golda
1 1/2 years, spayed female, German Shep/Mix, gorgeous, wants lots of attention, not good with cats.
Clyde & Jan Lambertz



Taffy
8 months, female, Terrier/Mix, very shy, but cuddly when she gets to know you.
Paw Wash



Prissy
5 months, female, Brown/Mix, adorable pup will be medium sized dog.
Vicki Hein