

Undercover sting brings five arrests

DRUGS, from Page 1

out a state drug tax stamp. Malsom's charges stem from alleged sales on Oct. 17, Nov. 6 and Dec. 18. Court records say on Nov. 6, she sold about one-half ounce of suspected marijuana to a confidential informant for \$40 at 1402 Cherry, which is 448 feet from the Goodland High School. For that, she is being charged with sale of a hallucinogenic drug within

1,000 feet of a school, possession of a hallucinogenic drug within 1,000 feet of a school, use of drug paraphernalia to sell/distribute controlled substances and no drug tax stamp.

On Oct. 17, Malsom reportedly allowed Clint Gresty to sell about one ounce of suspected marijuana to a confidential informant for \$100 at 1402 Cherry. And on Dec. 18, she reportedly sold about two ounces of what may be marijuana to a con-

fidential informant for \$150.

For those incidents, Malsom is being charged with aiding and abetting sale of an hallucinogenic drug within 1,000 feet of a school, aiding and abetting use of drug paraphernalia to sell/distribute controlled substance, two counts of no drug tax stamp, sale of an hallucinogenic drug within 1,000 feet of a school, possession of an hallucinogenic drug within 1,000 feet of a school and use of drug paraphernalia

to sell or distribute controlled substances.

The Quad County Drug Task Force includes the Thomas County Sheriff's Department, Colby Police Department, Logan County Sheriff's Department, Oakley Police Department, Gove County Sheriff's Department, Wallace County Sheriff's Department, Kansas Bureau of Investigation and the Sherman County Sheriff's Department.

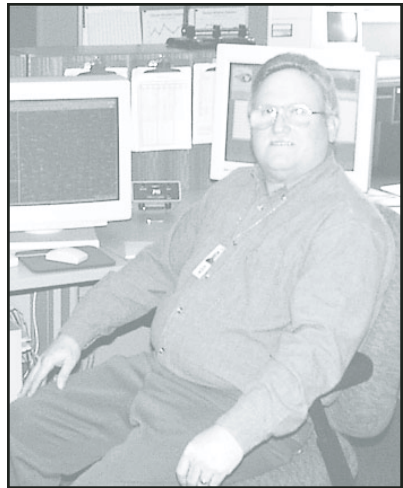
Weatherman Boyle recalls tornadoes, hail

RETIREMENT, from Page 1

that worked but the phones. He and one other weatherman took manual readings and reported them over the phone to the Topeka center, which broadcasted them. For 30 hours, they were snowed in at the weather office with no heat. Finally the National Guard set up propane heaters and a propane grill for a barbecue.

Then there was the time in late September when the weather office was struck by hail the size of baseballs and softballs, severely damaging the building.

He also fondly recalls tracking a tornado that was just west of Hays in



Bob Boyle

1984 or '85, which crossed I-70, stopping traffic for miles.

Boyle graduated high school in his hometown of Washington, Mo. He was always interested in the sciences, he says, especially in astronomy and the emerging space program of the 1950's.

He said he attended Southwest Missouri State University before joining the navy, and Kansas City Junior College afterward, but never earned a degree. He said that not too many schools offered courses in meteorology at the time he joined the weather service, and that it was easier for him to get the job than it would be without a degree today.

He said that the weather service is

constantly evolving, and now seems to be a good time to get out of it, before he's not able to keep up anymore.

"The midnight shifts seem to last a little longer now that I'm getting older," he added.

It comes as no surprise he drew a paycheck from the same place for 31 years. He said it runs in the family; his father stayed with the same company for 42 years.

Boyle, who had his retirement party Thursday, said he has no plans on how to spend his retirement, but might fix up the house a little, and work on his photography. And maybe spend some more time with his wife of 23 years, Deborah.

Regents at policy odds with community colleges

TOPEKA (AP) — Community colleges, technical schools and Washburn University are fighting what they see as an attempt by the state Board of Regents to get more control over their operations.

They are asking the board to revise proposals it plans to submit to the Legislature to give the regents more

authority over their institutions.

While regents listened to the suggestions during a Wednesday meeting, many indicated they expect to adopt the proposals when they meet again next month.

"It's untenable that we can set a policy, and 30 entities can snub their noses at it," said Regent Lew Ferguson,

of Topeka.

A 1999 state law places the regents in charge of the six state universities. It says the board will coordinate operations of community colleges, technical schools and Washburn in Topeka but have local boards govern those institutions.

Several regents want the Legislature

to establish the regents as the primary policy-making body governing higher education in Kansas.

The regents also have proposed establishing missions and goals for each institution, forcing them to sign contracts with the regents and requiring them to fulfill those contracts or lose some state funding.

New center director to continue sign-making business

DIRECTOR, from Page 1

and needs in the center.

While working at the newspaper, Goodwin said, she gained experience writing that will help with grant writing. She also wrote grants as the interim director of the museum, and said she will need that experience at the center as grants will be needed to keep it going.

She said she took time off from working full-time to raise her children — Chloe, who will be seven in January, and Alex, who is three and a half — and is now ready to work full-time again.

She said she has operated Good Sign Co. with her husband Curtis for the last

year and a half and will continue to do the designing for the business. Curtis will take a larger role, she said, and will be installing the signs and lettering.

She said she does computer graphics, designs signs of all sizes for indoor or outdoor, designs banners and lettering for windows and vehicles and operates the business in an office at The Corner Garage, which Curtis owns.

There was a lot of interest in the position at the center, Reid said, and she interviewed at least eight people

before choosing Goodwin.

She has been involved with the center for a long time, Goodwin said, as a member of the board, buying items for the gift gallery and helping with the

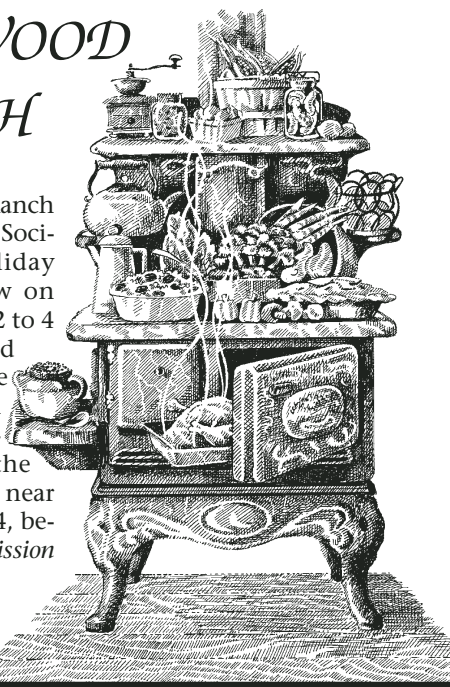
summer art program.

But she said she doesn't expect being the director to be a piece of cake.

"I have a lot to learn," she said. "It will be challenging."

HOLIDAY OPEN HOUSE AT COTTONWOOD RANCH

The Friends of Cottonwood Ranch and the Kansas State Historical Society are co-sponsoring a Holiday Open House and Quilt Show on Thursday, December 27, from 2 to 4 P.M. and 6 to 8 P.M. Bring a friend or a relative and enjoy the late 19th century atmosphere with entertainment and good fellowship. Bring a flashlight for the evening. Cottonwood Ranch is near Studley, along U.S. Highway 24, between Hoxie and Hill City. Admission and refreshments are free.



Volume & Variety

There has been some changes at *Finley Motors*

- Larger Inventories
- Lower Prices because of volume
- The best selection of new & used
- Lower Int. Rates
- Last but not least we have beefed up our service to better serve you.

Cars

2001 Cadillac DeVille, White, 14M miles
2001 Buick LeSabre, Silver, 17K miles
2001 Pontiac Bonneville, White, 16K miles
2001 Olds Alero, 4Dr, White, 18K miles
2000 Chevrolet Impala, Gold, 22K miles
2000 Olds Alero, 2Dr, White, 25K miles
2000 Ford Taurus, Gold, 30K miles
1999 Olds Aurora, Lt Bronze, 27K miles
1999 Pontiac Grand Prix, Silver, 30K miles
1999 Pontiac Grand Prix, 2Dr, Silver, 39K miles
1999 Olds 88, Red, 35K miles
1999 Chevy Monte Carlo, Red, 33K miles
1999 Pontiac Grand Am, Gold, 30K miles
1999 Olds Intrigue, Green, 30K miles
1999 Olds Alero, 4Dr, Gold, 25K miles
1998 Buick Park Ave., Silver, 46K miles
1998 Olds Intrigue, Silver, 43K miles
1998 Buick Regal, White, 44K miles
1998 Pontiac Grand Am, 2Dr, Red, 47K miles
1998 Pontiac Grand Am, 4Dr, Black, 30K miles
1998 Olds Cutlass, Gold, 60K miles
1998 Pontiac Sunfire, 4Dr, White, 60K miles
1995 Pontiac Bonneville, Green, 69K miles

Pickups

2000 Ford F-150, 4x4, Ext, Red, 21K miles
2000 Sonoma, Reg Cab, Pewter, 6K miles
2000 Sonoma, Ext Cab, Red, 19K miles
1999 Chevy Ext Cab, 2WD, Gray, 34K miles
1999 Chevy Ext, 2WD, Maroon, 37K miles
1998 Chevy Ext, 2WD, Green, 44K miles
1998 Chevy Ext, 4WD, Green, 47K miles
1999 Chevy Ext, 2WD, Red, 60K miles
1997 Chevy Reg Cab, White, 69K miles

Vans & SUV

2001 Chevy Suburban, 4WD, Pewter, 26K miles
2001 Chevy Blazer, Red, 10K miles
2001 Pontiac Montana, Red, 17K miles
1999 Pontiac Montana, Blue, 44K miles
1999 Ford Windstar, Green, 25K miles
1999 Ford Explorer, White, 23K miles
1999 Chevy Suburban, 4x4, Red, 49K miles
1998 Chevrolet Blazer, Mocha, 34K miles
1998 Olds Bravada, Wine Red, 49K miles
1998 Chevrolet Blazer, Green, 24K miles

FINLEY MOTORS, INC.

Highway 27 Goodland, KS
(785) 899-2346 or 1-800-525-3701

Most businesses closed for Christmas holiday

By Doug Stephens

The Goodland Daily News

Christmas is almost upon us and many businesses will be closed that day and Christmas Eve so employees can get a little rest. That means any business you have to take care of before Wednesday should probably be done today.

All federal, state, county and city offices will be closed Monday and Christmas day. Mail will be delivered Monday, but letters deposited that day will not be dispatched until Wednesday.

Most businesses will close early on Christmas Eve. A representative of the Chamber of Commerce said most Main Street stores will close at 4 p.m. Wal-Mart and Dollar General will close at 6 p.m. and Mueller Grain will close at noon.

Bankwest will be closed on Monday, but Western State Bank will be open until noon, and First National Bank will close at 2 p.m.

For those planning to eat out the day before Christmas, better not plan to eat late. McDonald's and Pizza Hut will close at 8 p.m., Wendy's at 4 p.m., and Subway at 3 p.m.

Convenience store workers have it a little tougher than the rest of us.

Two I-70 gas stations, Total Petroleum and Presto Convenience Store, will be open 24 hours on Christmas Eve and Christmas, and Goodland Sinclair will open from 2 to 10 p.m. on Christmas. As the Total manager said, "someone's got to take care of holiday travelers."

The Conoco Travel Shoppe will be open until 7 p.m. and Sinclair will close at 6 on Christmas Eve.

Those who plan to attend a religious service will have plenty of options.

Christmas Eve services will be held at the Goodland United Methodist Church at 5 p.m., Sunrise Christian Church at 6 p.m., and the First Baptist Church at 6:30 p.m. on Sunday, Dec. 23

Our Lady of Perpetual Help Catholic Church will have masses at 5 and 9 p.m. Christmas Eve, and 9 a.m. Christmas day; the Emmanuel Lutheran Church will have services at 6 p.m. Christmas Eve, and 10 a.m. Christmas day; and St. Paul's Episcopal Church will have Christmas day services at 10 a.m.

To find the hours of operation or service time for any business or church not listed, contact that organization for information.

Pratt County reports drug busts

PRATT (AP) — Pratt County authorities report seizing more than \$500,000 worth of marijuana over the past week.

That includes one bust that officials said was the largest in county history — 250 pounds of marijuana that a drug dog found in a motor home.

Early Monday, Pratt County Sheriff's Deputy Chris Tedder stopped a 32-foot motor home and with his K-9 partner, "Pico," found about 250 pounds of the suspected drug. Worth an estimated

\$361,000, it marked the largest marijuana bust ever in Pratt County, Sheriff Vernon Chinn said.

Two men, ages 35 and 60, were taken into custody. One agreed to work with Pratt County officials and the Illinois state police to complete a delivery in the Chicago area, and another person was taken into custody there, Chinn said.

The two men in the motor home are being held in the Pratt County jail on bond.



2525 South Walnut

Located in Armstrong Addition, this beautiful home is situated on 6 acres with horse barn, double garage and 40x60 Morton building. House offers 3 bedrooms, 2 baths, large family room and great room, new cherry kitchen cabinets with gold fixtures and center island. This home is in mint condition and is nestled among a three sided tree row, this one won't last long, call Cynthia Butts today! 899-2328 or 899-3944.

RICHARDSON'S HOMESTEAD REALTY, INC.



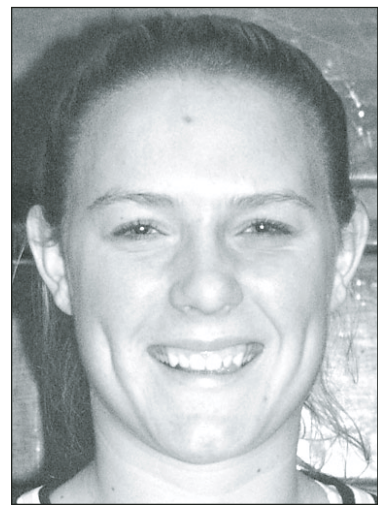
"Making Dreams A Reality"

Cynthia Butts 785-899-3944 / Donna Moore 785-899-6159

1023 Main • Goodland, KS 67735



student of the week



Name: Anny McCoy
Parents: John & Tracy McCoy
Grade: Junior
Age: 17
We've nominated this student because: She is an incredible example of what every student can & should be. She has worked very hard to be one of the best persons/christians we have at USD 352.

Student Comment: My favorite class is English with Mrs. Hall. My favorite part of school is FCA on (Wednesday) mornings. It is just awesome.

Activities involved in at school: Basketball, FCA, GAA.

My choice of movies, books, and games : Pearl Harbor (movie), Sonic Flood (music), Basketball (games)

After I leave Goodland High School I intend to ...: Go to college.

And 10 years from now, I think I'll be ...: Married and have a family.

Favorite Quote: "Commit everything you do to the Lord and he will make your plans succeed." Proverbs 16:3

GOODLAND SHEET METAL

1616 Broadway • 785-899-7263

We will be closing our lobby and drive-up at 2:00pm on Monday, December 24.

Merry Christmas from
First National Bank

Colby, Goodland, Kirk, Oberlin, Quinter, Sharon Springs & St. Francis

MEMBER FDIC

www.fnb.com

CPI Qualified Plan Consultants, Inc.

Home for the Holiday?
Consider a Career Close to Home!

CAREER CHOICES

FABULOUS BENEFITS:

- Full Range of Insurance Plans with Generous Company Subsidy
- 401(k) Plan with 2% base employer contribution 100% Match + Profit Sharing
- Stock Purchase Program
- Education Incentives
- Paid Time Off and MORE

COMFORTABLE ATMOSPHERE:

- Advancement Opportunities
- Family Friendly Policies
- Casual Dress Code
- Free Pop, Coffee & Popcorn
- Concierge Service
- Flexible Scheduling
- Interesting work

Do you enjoy working with numbers, computers (especially spreadsheets), contact with clients, and a new challenge every day? Pension Plan Administration might be right for you! All open positions are located in Great Bend, Kansas.

A wholly owned subsidiary of
A.G. Edwards, Inc.

Send resume to:
CPI Qualified Plan Consultants
P.O. Box 1167 • Great Bend, KS 67530
or send email to: HR@cpiqpc.com