

Gwendice Marie and Chad David Mai

Couple wed in April

Gwendice Marie Mitchek and Chad David Mai of Falcon, Colo., married at sunset Saturday, April 5, 2003, in a private wedding at Kapalua Bay Beach, Maui, Hawaii.

Jack and Becky Mitchek and Cheryl and Greg Doll, all of Goodland, are the bride's parents. Dave Mai of Lawrence, formerly of WaKeeney, and Scott and Nancy Gilmer of Goodland, formerly of WaKeeney, are the groom's parents. Dyne Neil Schaffron officiated at the double-ring ceremony. JoJo Maltese, a Hawaiian photographer and the wife of the minister, served as the witness.

The bride, wearing a white Renaissance-style dress, was given in marriage with the blessing of her parents. There were no attendants.

The dress was handmade by the bride with help from Carolyn Braz-

da of Goodland. It was a light, delicate gown ideal for a beach wedding.

The bride carried a bouquet of fresh, hand-picked Hawaiian flowers. There was a rose and orchid lei for the bride and a traditional teal-leaf lei for the groom.

The music for the ceremony was the Hawaiian Marriage Chant. The couple honeymooned in Maui.

On their return to Colorado, the couple's parents hosted a "Colorado" style luau in Falcon.

The bride graduated from Goodland High School and Texas Women's University and is a drapery designer.

The groom graduated from Goodland High School and Northwest Kansas Technical College and is a field technician for Nortel Networks.

Student wins aviator scholarship

Mandi Bellamy of Sharon Springs, a Kansas State University

sophomore in airway science, received the Women Military Aviators Memorial Scholarship at the annual Women in Military Conference March 20-22, in Cincinnati, Ohio.

The daughter of Brian and Shelly Bellamy of Sharon Springs, she attended high school in

Goodland.

Bellamy was selected as one of the top 10 finalists out of 95 applicants March 16, and traveled to Cincinnati to interview with the scholarship selection committee and attend the conference.

In October, she began compiling an application that consisted of a 500-word typed essay; three



Bellamy

letters of recommendation; a resume; copies of her aviation licenses and medical certificates; and the last three pages of her pilot log-book.

Bellamy was presented with the \$1,000 scholarship at the conference's formal dinner, with top names and companies in the aviation industry in attendance.

"I feel honored to have received this scholarship," Bellamy said. "It's like I won the lottery because

it's so difficult to receive a national scholarship."

Bellamy is a member of the Women in Aviation International organization. The Women Military Aviators Memorial Scholarship she received is in memory of the 38 women Air Force pilots who died in World War II.

They were the first women in history trained to fly American military aircraft, Bellamy said.

Moran taking service academy applications

U.S. Rep. Jerry Moran is accepting applications for nominations to the U.S. service academies.

The academies include the Air Force Academy in Colorado Springs; the Naval Academy in Annapolis, Md.; the Military Academy in West Point, N.Y.; and the

Merchant Marine Academy in Kings Point, N.Y. Those selected will enter the academies in June 2004.

Selections are based on SAT or ACT test scores, class rank, grade point average, school records, extracurricular activities, leadership

potential, motivation, recommendations and interview evaluations.

Applicants must be legal residents of Kansas, at least 17 but not past their 23rd birthday by July 1 of the year of admission, citizens of the United States, unmarried, not pregnant and without legal obligation to support children or other dependents. The SAT or ACT scores are required.

If nominated by Moran, the applicants must then meet the individual admission requirements of an academy. The academies will make the

final decision.

Due to limited openings, Moran encourages all interested candidates to apply also to the offices of U.S. Sens. Pat Roberts and Sam Brownback.

Interested applicants should send a letter requesting application materials to: Rep. Jerry Moran, Attention: Service Academy Selection, Box 1128, Hutchinson, Kan. 67504-1128.

For information, contact Rep. Moran at (202) 225-2715 or visit his web page at www.house.gov/moranks01/.

TAXES, from Page 1

had \$1,190,000 in tax credits out of the total project cost.

"I adjusted the value down to \$548,000," he said, "but they are not satisfied and have appealed it to the state Board of Tax Appeals."

The first adjustment means a reduction of \$9,172 off the property taxes from last year, but Ballard said the housing people want the valuation lowered to about \$370,000. He said that would be another \$4,000 in tax reduction if the board takes the lower valuation.

"I am concerned about how this is unfair to the other people who have rental property," Ballard said, "but I have to follow the rules for this type of subsidized housing."

Sheriff heads to Washington

Thomas County Sheriff Tom Jones was one of only four officers from Kansas invited to take part in a two-day intensive training seminar in the Washington area to help response time in finding abducted or missing children.

Jones said today the focus of the training on the Amber Plan will be in how to better partner with news media in getting information out to the public when a child is abducted.

The Amber Plan, sponsored by the National Center for Missing and Exploited Children, was created in 1996 as a legacy to 9-year-old Amber Hagerman, who was kidnapped and murdered while riding her bicycle in Arlington, Texas.

Jones said the seminar is next week, and it is designed to help law enforcement re-establish the thought process about how to handle missing children or abducted children.

"In the past, we have not been forthcoming with information to

He told the commissioners fighting the appeal might actually cost the county money, and asked them for suggestions.

Commissioner Kevin Rasure said he felt it was unfair to value the property so low, and suggested hat Ballard at least pursue the appeal with the help of County Attorney Bonnie Selby.

Ballard said it will probably be several months before the issue is scheduled for a hearing in Topeka, and he would be working on further research to support the higher valuation.

"I am not sure how the state board will rule on this," he said. "I will continue to try to reach a price with the housing people and hope to settle the issue before it is heard by the state board...."

the local newspaper, television or radio and therefore the public was unable to offer help," Jones said. Media sources could get out information that could allow them and the public to help find the kidnapper.

Goodland graduate signs with university

Ashley Hallagin, a 2001 Goodland High School graduate, signed a letter of intent to play volleyball at Lamar University in Beaumont, Texas.

A 5'8" setter at Barton County Community College, Hallagin was a two-time first team all-region VI selection.

The college's team was 33-7 and placed fifth in the 2003 National Junior College Athletic Association National Tournament.

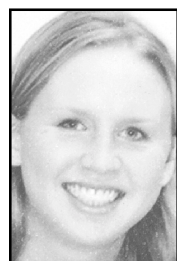
Hallagin finished her career with the Barton County Cougars with more than 1,900 assists, including over 1,200 as a freshman.

Following her freshman year, she earned first team all-Jayhawk

West honors in addition to her second-team All-America recognition.

In high school, Hallagin was named Kansas 4A Player of the Year at the conclusion of her senior season. She was a three-time all-state selection and a member of three state-placing teams.

Fiona Bolten, coach at Lamar University, said, "We are very excited about signing Ashley. She is extremely talented and should bring a great deal of experience to our team in the fall."



Hallagin

4-H news

The monthly meeting of the Sunflower 4-H Club was held Monday, April 21, at the Methodist Church. President Samantha Raymer called the meeting to order followed by the flag salute and 4-H pledge.

Roll call of "What is your favorite color?" was answered by 22 members, one leader, zero guests and 12 parents.

Kendra Promise led the group in singing "You're a Grand Old Flag." The minutes of the previous meeting were not available. Reports of officers and the leader were given. There was no unfinished business. In new business, it was decided to make a donation to the Sherman

County Livestock Bonanza.

The meeting was turned over to Vice President Jason Krayca for the program. Chelsea Gausman demonstrated how to make an Edible Easter Bunny cake. Nicole Hendrich recited a poem titled "I Did a Nutty Somersault." Jason Krayca demonstrated how to make a cat cake. Recreation was led by Ryan Irvin. A relay race of Tri-Hopathon was played.

The next meeting will be at 7 p.m. Monday, May 19, at the Methodist Church. The meeting was adjourned by saying the club motto. The Irvin and Gausman families served refreshments.

Colby Community College — Goodland Outreach Summer 2003

Goodland Enrollment:

Monday, May 5th, 1:00 - 4:30 p.m. MT, at the Northwest Kansas Technical School, Murray Center
Monday, May 5th, 6:00 p.m. - 7:30 p.m. MT; at the Goodland High School Cafeteria

Course Number	Course Name	Instructor	CR	Tuition + Fees	Place	Time	Start Date
MONDAY							
SO 176	Introduction to Sociology — ITV	L. Koon	3	\$165	Murray Center	5:00-9:30 pm	6/2-8/4
TUESDAY							
HI 177	American History 1865 to Present — Telecourse	R. Walz	3	\$175	Murray Center	3:35 pm	5/13
WEDNESDAY							
SP 176	Speech I — ITV	L. Koon	3	\$165	Murray Center	5:00-9:30 pm	5/28-7/30
SATURDAY							
AR 123	Introduction to Crafts (Scrapbook) 6/7,14,21	C. Johnson	1	\$50	Murray Center	9:00 am	6/7-6/21
CO 176	Introduction to Computers	T. Curtis	3	\$150	Resource Center	8:00 am	5/3-5/10
MONDAY / THURSDAY							
EN 176	English Composition I	L. Van Loenen	3	\$150	GHS—room 226	6:00-9:00 pm	6/2
TUESDAY / THURSDAY							
PS 176	General Psychology	R. Walz	3	\$150	Murray Center	5:15-9:30 pm	5/8-6/26
FRIDAY/SATURDAY WORKSHOPS							
EN 219	Intro. to Literature — ITV (6/13-14, 20-21, 27-28)	K. Coplin	3	\$165	Murray Center	4:30 F/7am S	6/13-6/28
TO BE ANNOUNCED (TBA)							
AL 105	Nurse Aide I	S. Pearson	2	\$100	Good Samaritan	TBA	TBA
AL 106	Nurse Aide II	S. Pearson	3	\$150	Good Samaritan	TBA	TBA
AL 110	Medication Aide	S. Pearson	3	\$150	Good Samaritan	TBA	TBA
AR 114	Beginning Crafts — Stained Glass	C. Kickler	3	\$150	TBA	TBA	TBA
AR 215	Advanced Crafts — Stained Glass	C. Kickler	3	\$150	TBA	TBA	TBA

Tuition indicated is for Kansas residents only. Refer to tuition note below for non-resident rate.

TBA = To Be Announced; night and starting date will be determined by the enrollment.
GHS = Goodland High School
Murray Center and Resource Center are on the campus of the Northwest Kansas Technical College

Introduction to Literature will meet 4:30-10:00 pm Friday and 7:00 am - 5:00 pm Saturday on the three weekends of June 13-14, 20-21, 27-28.

Tuition is \$50.00 per credit hour for Kansas residents; \$88.00 per credit hour for non-residents; \$58.00 per credit hour for special non-residents. Some classes have additional fees. Special non-residents are any resident of the following Colorado and Nebraska counties or a graduate of any high school located within these counties. Nebraska: Dundy, Hitchcock, Red Willow, Furnas, Harlan Colorado: Yuma, Kit Carson, Cheyenne

ITV classes require pre-registration to have textbooks and handouts available and have an additional \$5.00 per credit hour fee. Contact Sharon Hall. Telecourse classes have a special \$25 course fee.

A Colby Community College counselor will be available at both enrollment sites to answer questions on financial aid, graduation requirements, and career options.

For additional information contact: Sharon Hall (785) 899-5930

B-E's Jewelry

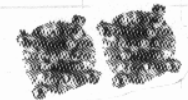
Offering Entire Stock of Diamonds, Precious Stones & 14K Gold Jewelry at Up to 60% SAVINGS

Going Out of Business SALE

MINI VAULT

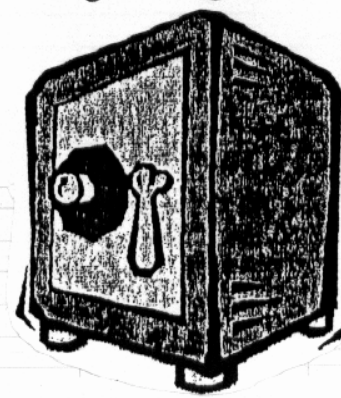
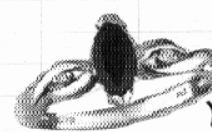
Bring your key found in our sale flier from last weeks **Goodland Star-News** or pick one up at our store, and if your key opens our Mini Vault you will win a valuable prize. The Mini Vault contains Gift Certificates from \$10.00 to \$300.00 each. There are 330 winning keys. Keep your key to try again; the lock will change during the sale.

*Must be 18 years of age or older.
*One key per customer.
*All winning keys are to be left at the store.



14K Diamond Earrings

	REG.	SALE
1/5 CT TW	300.00	149.95
1/4 CT TW	400.00	199.95
1/3 CT TW	500.00	249.95
1/2 CT TW	1180.00	589.95
.70 CT TW	1600.00	799.95
1.25 CT TW	3400.00	1699.95



Your Choice

**Created Ruby & Diamond Ring
Or Created Sapphire & Diamond Ring
In 10K Yellow Gold
REG. \$120.00**

\$59.95



**Your Choice
Stud Birthstone
Pendant or Earrings
In 10K Yellow Gold
REG. \$40.00**

\$19.95



**Men's & Ladies Watches
By Seiko, Pulsar & Speidel
Up to 60% Off**

B-E's Jewelry

1105 Main Goodland, KS

(785) 890-5400

STORE HOURS

Mon-Sat 9:00 AM-5:00 PM

LAY-A-WAYS

All items subject to prior sale