

# Slime molds common on lawns

This past week I ran into two lawns with slime molds on them.

Ward Upham, Kansas State Horticulture Response Center, provided the following description of what slime molds are and how they work.

Slime molds are primitive organisms that are common on turf and mulch. Slime molds are not fungi and are no longer classified as such. They belong to the Kingdom Protista rather than Kingdom Fungi.

On turf, you might often see large numbers of small gray, white or purple fruiting structures, called sporangia, on leaf blades during cool and humid weather throughout spring, summer and fall.

Affected areas are often several inches to one foot in diameter. During wet weather, the fruiting struc-



## dana belshe

• ag notebook

tures may appear slimy.

As the structures dry out in hot weather, they become ash-gray and break up easily when touched. Homeowners often are concerned that this is a disease organism that will kill the grass, but slime mold feeds on bacteria, other fungi and dead organic matter.

It simply uses the turf as a structure on which to grow. However, slime mold can damage turf by completely covering leaf blades and interfering with photosynthesis. Chemical control of slimemolds is not necessary. Use a broom or a

heavy spray of water to dislodge the mold.

Slime molds on mulch often attract attention because of their bright colors and disgusting appearance.

Common names are often quite descriptive. For example, the "dog vomit" slime mold is a bright, whitish color that looks like its namesake. It eventually turns brown and then into a hard, white mass.

There is also the "scrambled egg" slime mold, "the yellow blob" slime mold and the "regurgitated cat breakfast" slime mold.

Slime molds do not hurt anything, but most people do not find them attractive and want to get rid of them. Simply use a shovel to discard the offensive organism and then stir up the mulch for aeration.

# matters of record

### District Traffic

The following traffic fines have been paid in the district court:

**March 31** — Daryl S. Bisanz, 39, of Omaha, Neb., was fined \$221 for speeding, 98/70, and \$10 for no seat belt.

**April 1** — Shay A. Rubio, 20, of Goodland was fined \$113 for

speeding, 69/55, and \$10 for no seat belt.

Rachel E. Oldham, 18, of Burlington was fined \$125 for

speeding, 86/70.

**April 2** — Traci L. Daubert, 28, of Goodland was fined \$10 for no seat belt.

## NOTICE

Effective July 1, 2003, collection service for solid waste, yard waste and special collections will be handled by Sherman County and their contractor, "In the Can, LLC".

The City of Goodland will continue to bill residential solid waste collection for Sherman County, however all other billing related to waste collection will be handled by Sherman County or their Contractor.

**As of July 1, 2003**, direct all calls or concerns relating to collection of waste materials to: **In The Can, LLC** - 1007 East Highway 24 - at 890-8080 or Sherman County at 899-4865 or 899-4868.

## Hallmark store to celebrate Christmas

The weather outside is frightfully hot, but inside it's so delightful as Christmas arrives at Jacque's Hallmark.

On Saturday, July 12, new collectible ornaments will be unveiled at Hallmark Gold Crown stores during the Hallmark Keepsake Ornament Premiere, an annual holiday party that gives customers a first chance to purchase keepsake ornaments from the new line.

The mystery ornament will be revealed, and customers will have an opportunity to win free ornaments if they really know the keepsake line.

Collectors can see the new version of a favorite collectible series, snag that all-important first ornament in a brand-new series or simply find a special ornament that touches the heart.

"Keepsake ornament enthusiasts tell us they can't wait for the fun and festivities of ornament pre-

miere," said Keri Olson, keepsakes associate product manager. "They really enjoy stopping by the stores to celebrate with other collectors and get the new ornaments they need to round out their collections and to be the first to see the new keepsake ornaments."

This year is even more special as it marks the 30th anniversary of keepsake ornaments.

With more than 200 new ornaments this year, it's quite a change from the six glass ball ornaments and 12 yarn figures that were introduced as the first collection of keepsake ornaments in 1973.

Jacque's Hallmark, 1124 Main, joins nearly 4,300 stores nationwide participating in the premiere.

A register to win game allows eight customers in each store to win free ornaments by correctly answering trivia questions about keepsake ornaments.

Ornament enthusiasts have been eyeing the 2003 collection in

their Dream Books, Keepsake Ornament catalogues which were mailed in March, and on-line at Hallmark.com since January.

Of special note this year is the new Snowman's Land Collection which highlights the popularity of decorating with snowmen.

A "Snow What Fun!" fabric snowman will be available for \$4.95 with any keepsake ornament purchase or free with the purchase of three Snowman's Land Keepsake Ornaments.

Another big surprise is the mystery ornament which will be unveiled at the ornament premiere. Even the retailers don't know what it is!

Giving a keepsake ornament as a memory-keeping gift is a tradition for many families.

The ornaments help families preserve and share special events and memories, celebrate pastimes and bring favorite characters to life.



## COMPUTER CLASSES

### July 2003 - Goodland S&T Office

Word Level 2 - July 2

PowerPoint Level 2 - July 9

Excel Level 2 - July 16

Access Level 1 - July 23

Intro to Computers - July 30



1318 Main - Goodland, KS - 866-790-0243

*From Computer & Software Sales to Service & Support~ Stop by S&T Communications!*

## 0.0% TO 60 MONTHS OR REBATES UP TO 3,000 ON ALL NEW 2003 GM VEHICLES GREAT SELECTION OF OVER 240 NEW AND USED VEHICLES

**\$10,900**



### 2000 HONDA ACCORD

LX Sedan, Loaded

**\$3,850**



### '96 BUICK SKYLARK

Good School Car

**\$16,500**



### 2000 CHEVY SILVERADO

4 Door, Vortec V-8

**\$4,500**



### '86 FORD F-150

4x4, Sharp, New Tires

**\$12,500**



### '99 FORD EXPLORER

4x4, XLT

**\$9,500**



### '98 BUICK LESABRE CUSTOM

3800 V-6, Only 52k

**\$3,250**



### '92 FORD THUNDER BIRD

**\$9,900**



### '96 CHEVY

Vortec 350, Auto

**\$5,750**



### '96 CHEVY ASTRO AWD

**\$4,554**



### '98 SATURN LS SEDAN

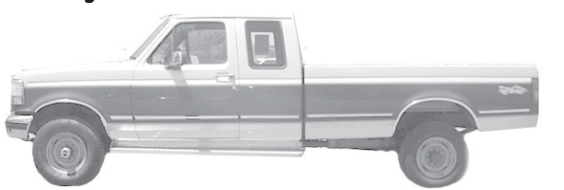
**\$1,995**



### '92 EAGLE TALON

AWD, Turbo

**\$5,500**



### '92 FORD F-250

4x4, 460 V-8

**\$2,950**



### '94 DODGE CARAVAN

**\$10,900**



### '97 NISSAN 240 GTR SX COUPE

Lots of Extras, 58k

**\$1,450**



### '89 DODGE SHADOW

**\$3,000**



### '89 CHEVY 4X4

**\$17,900**



### '99 GMC YUKON

4x4, SLT

**\$7,000**



### '97 CHEVY BLAZER 4X4

Loaded, LT

**HARCHELROAD MOTORS INC.**

WAUNETTA, NEB.

(308) 394-5555

1-877-86CHEVY