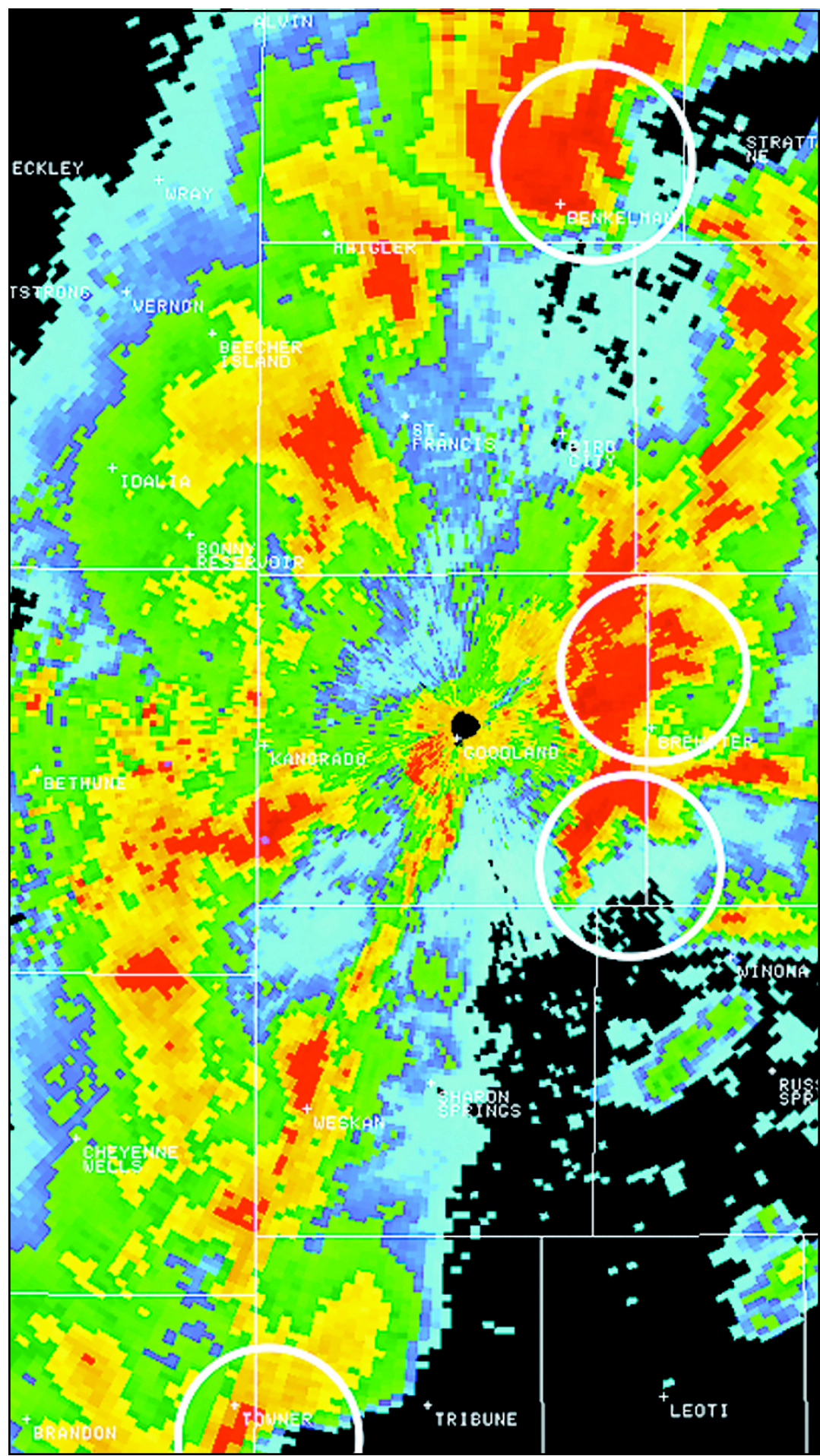


# Twisters rip across High Plains



Butch McCracken's granddaughter hauled another shovel full of debris from the inside of his house, where the tornado ripped the roof off Wednesday.



A radar image from the National Weather Service in Goodland taken at 8:30 p.m., at the height of the storms on Wednesday, shows at least 12 separate storm cells. The circles mark radar indications of possible tornadoes. The one on the bottom, southwest of Tribune, is the track of the twister that hit Holly, Colo. Two circles east of Edson were moving north. The top circle is the tornado that hit the Benkelman, Neb. area. The tornadoes that missed Goodland and later hit Bird City occurred more than an hour before this image was taken.

Radar image from David Floyd, warning coordinator meteorologist



Lonnie Beaver (left) stood on the steps in front of his roofless house and talked to Prowers County Assessor Andy Wyatt (center) and representatives from the Federal Emergency Management Agency about the damage to his home and the value. Beaver said he was lucky because he can replace the rafters and roof and there was little damage to the interior.



Holly veterinarian Dr. Judy Fell (right) and her daughter Monica Umland stood in front of a barn at the north end of Main Street in Holly. The tornado Wednesday cleanly removed the roof without harming any of the mares or foals inside.



A tornado Wednesday stripped trees in Holly's Gateway Park in the middle of town bare. The storm left a path of debris along the bed of old Horse Creek, on which the park had been built about 80 years ago. The park was in the middle of the 600-foot-wide tornado.

Photos by Tom Betz  
Goodland Star-News