

# Hospital musical spoof entertains at dinner theater

The Goodland Arts Council's annual dinner theater will entertain with a musical spoof on hospital dramas Saturday through Monday while the audience enjoys dinner or a dessert buffet.

The minimusical comedy, "Welcome to Bedside Manor," will be presented at the Goodland Elks Lodge. The Saturday show, at 6 p.m., will include dinner, and the Sunday matinee, at 2 p.m., will feature a dessert bar.

The Monday show, at 5:30 p.m., will feature a cocktail hour before the play with hors d'oeuvres. Errington & Errington of Burlington will cater all three.

Tickets must be purchased by Wednesday at the Carnegie Arts Center, 120 W. 12th.

Tickets for Saturday's dinner performance are \$25 for arts council members and \$30 for nonmembers. Sunday and Monday's are \$20 for members, \$25 for nonmembers.

The one-act comedy directed by Judy Hayden features a cast of local talent, said center Director Tina Goodwin. The musical spoof is set in a small private hospital where the staff is as wacky as the patients.

"Bedside Manor," Hayden said, is supposed to provide uproarious laughter, a "joke book with thermometers." It's sort of slapstick, she added.

Judi Vignery (left), Jacque Schields and Ron Vignery practiced for the Goodland Arts Council's production of "Welcome to Bedside Manor." The play will be Saturday, Sunday, and Monday at the Elks Lodge.

Photo by Sharon Corcoran  
The Goodland Star-News



# City establishes emergency routes

By Tom Betz

*The Goodland Star-News*  
Responding to problems during the blizzards in December and January, the city commission approved an ordinance establishing emergency traffic routes and giving police power to tow cars out of the way of plows.

City Manager Wayne Hill told the commission last Monday that the storms are not the only reason for establishing emergency routes.

"These are more than just for snow," he said. "Emergency routes would be important in case of a tornado, flooding, fires, chemical spills or other natural disasters we might face."

"Keeping the main routes open is important in any emergency. True, most of the problems we have seen come with the snow storms where we have parked, stalled and abandoned vehicles that caused problems."

done vehicles that caused problems."

The ordinance establishes a list of main streets around the city. In a traffic emergency declared by the city, vehicle owners would have two hours to get their cars off the street before the city can have them towed.

Hill said the city had an emergency route list, but did not have signs up or have a clear procedure for moving cars.

"How soon will the signs go up?" City Commissioner Dave Daniels asked.

"As time permits," replied Rich Simon, city public works director. "We will hope to get them up this summer."

Commissioner Josh Dechant suggested a couple of changes to the list, and Hill agreed to incorporate them.

Hill said after the signs go up, he plans to drive the streets to be sure they are visible. He said the city will do some publicity in the fall to remind people about the emergency routes and the penalty if their cars are not moved when an emergency is declared.

The police can ticket an owner if their vehicle is in an emergency route during a declared emergency, with a fine up to \$100 and or 30 days in jail. Also the owner will have to pay towing and storage charges before they could recover a car that had to be moved.

The list of emergency routes includes:

- Kansas Avenue from 17th north to First.
- Caldwell Avenue from 17th north to the airport.
- Center Avenue from 12th north to Eighth.

- Cherry Avenue from 17th south to business U.S. 24.
- Eighth Street east from K-27 to Eastridge.
- Ninth Street east from Center to Caldwell.
- 12th Street east from K-27 to Harrison.
- 17th Street east from Cattletrail to Cherry.
- First Street east from Kansas to Grand.
- Toelkes Avenue east and west.
- Maple Avenue east and west.
- Aspen Avenue from Maple to Second and Grand.
- Second and Grand west to Kansas.
- Arcade north from 18th to Second.
- 18th Street east and west.

# Mayor to serve new term

Brewster Mayor Mike Baughn will serve another term, winning re-election last Tuesday in unofficial results with 107 votes, but voters booted a veteran council member who lost by four votes.

The council race featured three people running for two seats. Newcomer Stacey Edmundson led the ballot with 84 votes while incumbent Ronald Ribordy had 60 to take the second seat.

The other incumbent, Gene Schoenberger, trailed with 56 votes and will leave the council.

There were five write-in votes for mayor and six write-in votes

for council.

Four incumbent Brewster school board members were re-elected, but one board seat remains open. The races were not contested. The seats on the Brewster School Board are at large.

Willard Crumrine, Don Allen, Rod Gilley and Bonnie Holm were all re-elected. The term of Lonnie Selby expired, but he did not file for re-election.

Crumrine had the most votes with 165; Allen followed with 155; Gilley had 137 and Holm received 116.

## corrections

The Goodland Star-News will correct any mistake or misunderstanding in a news story. Please call our office at (785) 899-2338 to report errors. We believe that news

should be fair and factual. We want to keep an accurate record and appreciate you calling to our attention any failure to live up to this standard.

**All you can eat  
breakfast!!!  
April 14, 7 a.m. - 2 p.m.**

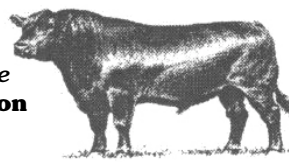
**Masonic Building  
519 Center, Goodland  
pancakes, sausage, orange juice and coffee  
Adults - \$5 Children under 12 - \$3  
Goodland Chapter Order of Eastern Star**

## KAISER ANGUS Annual Bull Sale

Saturday, April 14, 2007 — 1 p.m.  
Oakley Livestock Commission Co., Oakley, KS  
**3 18 Month Old Bulls  
20 Yearling Bulls**

Sires: E&B 1680 Precision 1023 GAR Integrity  
Bon View New Design 878 S S Objective T510 OT26  
Summitcrest Precision N194 G A R Precision 6373

**First Breeding Season Guarantee  
Call Darrell for more information  
Home: 754-2234  
Cell: 673-3357**



## New Listing 216 E. 4th

Style and comfort describe this wonderful family home offering a split level floor plan. Main floor offers an open living room in close proximity to kitchen with eat in dining room, 2 bedrooms and main bath. Basement offers large family room, bathroom with laundry hookups, 2 additional bedrooms and walk out to garage with storage room. Basement offers large escape windows throughout. Contact Cynthia Butts at 785-821-1811 for your viewing or visit [www.cynthiabutts.com](http://www.cynthiabutts.com)



## New Listing 906 Montana

This 3 bedroom brick ranch is located in a great neighborhood and offers a formal living and dining area, large kitchen with appliances, 3 bedrooms, 2 baths and laundry room off side entrance. The finished basement offers a family room, rec room with wet bar and newer hard wood floors. Outside you'll find a beautifully landscaped yard with mature trees and flower beds. Call Cynthia Butts to take a look at this wonderful home at 800-974-2426 or visit [www.cynthiabutts.com](http://www.cynthiabutts.com).



**785-899-2328 800-974-2426  
1023 Main Street ~ Goodland, KS**

**E-mails:  
Terry, Donna or Cynthia@goodlandhomestead.com**



**Terry Richardson | Donna Moore | Cynthia Butts  
www.GoodlandHomestead.com**

**APRIL IRRIGATION TIRE SPECIAL  
11.2x24 Farm King \$99.<sup>95</sup> each  
11.2x38 Farm King \$184.<sup>95</sup> each**



**Carquest & Frontier Ag Shop  
W Hwy 24, Goodland, Kan.  
899-3505**

## Need a Ride?

Call General Public Transportation Bus Services are available within the City limits of Goodland, Kansas

**To schedule a ride call:**

Monday thru Friday  
9:00 am to 3:00 pm MST  
785-899-5082

Donations are accepted  
Handicap Accessible

"Project Funded in part by the KDOT Public Transit Program"