



Goodland High School senior Amber Cowan made an out at first in the first game against Thomas More Prep-Marian of Hays on Friday at Centennial Park. Photo by Pat Schiefen/The Goodland Star-News

Monarch pitchers put halt to Cowgirls

The Cowgirls softball team lost both games of a doubleheader Friday at Centennial Park to Thomas More Prep-Marian High due to strength of the Hays school's pitchers.

Marian started off the first inning of the first game by scoring four runs. Senior Lindsay Schields led off the batting for the Cowgirls with a single. Junior Sammie Raymer hit a fly to right and was tagged out at first. Sophomore Erika Gonzales struck out to end the inning, and the score was Marian, 4-0.

The first batter for Marian in the second inning hit a ball to Goodland pitcher senior Nicole David, who threw to senior Amber Cowan at first. Marian junior Chelsea Fieler hit a single, but the next two batters hit flies to senior short stop Whitney Archer and left fielder Schields. All three Goodland batters struck out.

In the third, Marian was not able to score. In the bottom of the inning, sophomore Jessica Bauman struck out and junior Holly Kibel flied to center. Cowan hit a single but was unable to score when Schields was struck out.

The batters for Marian all flied out.

In the fourth, Raymer was out when the pitcher fielded her ball and threw to first. Gonzales struck out. Archer hit a ball to short stop and was tagged out at first.

In the fifth, neither team was able to get runners on base. In the sixth, Marian's Kaylee Hoffman hit a single, stole second and was batted in by Fieler. That made the score 5-0.

Cowan hit a single but was unable to score. No one scored in the seventh, making the final score 5-0 Marian. The losing pitcher was David.

Neither team was able to score in the first inning of the second game. In the second, Katie Gottschalk had a hit but was tagged on second. The next batter, Fieler, was out when the catcher threw her fly to second. Shippers had a single and Stramel walked, stole second and third, scored and earned a RBI. That put Marian up 2-0.

Neither Goodland nor Hays was able to score in the third, and Marian did not score in the fourth. For Goodland, Raymer struck out, then Gonzales and Archer hit singles. Pitcher sophomore Danielle Pettibone hit a single, driving Gonzales

in. Third baseman junior Andrea Wolak hit a single and batted Archer in to tie the score at 2.

In the fifth, Marian junior Kelsey Flax hit a double and stole home to score. Goodland had two strike outs and Schields flied to center. That left Marian up 3-2.

Marian did not score in the sixth. Gonzales popped to the pitcher. Archer walked, then stole second and third. Pettibone struck out. Wolak hit a single and drove Archer in to make the score 3-3.

Marian pitcher junior Maddy Mall hit a single. Sophomore Maddie Holub hit a home run, giving Hays two more runs. Freshman Kaylee Hoffman hit a single and Fieler a double. Both scored when Gottschalk hit a sacrifice. That made the score 7-3 Marian. Goodland was not able to score in the bottom of the seventh. Pettibone was the losing pitcher. That leaves Goodland with a record of 12-7.

"The girls played tough against some very good pitching," said coach Tess Smith. "They hung in there. We had one bad inning in each game."

"We will find out Wednesday who we will play in the regional playoff on Monday, May 1. We finished the season on a good note."

People reach out to those in Greensburg

TORNADO, from Page 1

from the City of Greensburg and across the state for a briefing and a tour of the damage.

The tornado claimed the lives of 10 people in Greensburg and 2 in neighboring communities. Over 50 people were injured and 16 remain

in critical condition in hospitals.

A Kansas Highway Patrol spokesman, Sgt. Ron Knoefel, said Monday that a survivor had been found in the rubble Sunday. He did not say who survivor was, but said the rescue crews continue to go through the ruins carefully to make sure everyone has been dug out.

Reports from the National Weather Service said the tornado had winds up to 205 mph and was more than a mile wide when it struck the town of 1,600, about 50 miles east of Dodge City.

Due to the tornado damage, the Highway Patrol closed U.S. 54 indefinitely. Troopers manned road-

blocks in Pratt at the junction with U.S. 281, and west of Greensburg at the junction of U.S. 183. Drivers had to go about 60 miles out of the way if they stayed on state highways.

Greensburg drivers with proof of residency will be the only vehicles allowed past U.S. 54 roadblocks into the Greensburg area, Knoefel said.

Brits invade Goodland to promote soccer camp

SOCCER, from Page 1

took a few rounds to have more people trying to kick balls out of bounds than to get across the field.

For the last segment, Stirling lined up the players into two teams for a full-field scrimmage. The coach would stop action once in a while to give tips and to have the goalie changed so as many got to be in that position as possible.

Leckie said he and Stirling might be back for the week-long camp

July 23-27 if enough kids sign up.

He said they headquartered in Lincoln, Neb., and drove down to Norton on Friday night. They got lost and did not get to the hotel until about 2 a.m.

He said the tornado sirens went off about 2:30 a.m., and they did not get to bed until 3:30. Stirling said he thought they were air raid sirens.

"We were just getting to sleep when the sirens went off," Leckie said. "We weren't sure what was going on, but were told it was a tor-

nado warning.

"We went to the shelter until the danger was past and went back to bed. We are not used to such sirens in Scotland, and the first thought was they were air raid sirens."

Leckie said he hopes to come back in July, and is looking forward to working with the young players.

He said the coaches they bring will be looking for someone to host them during the week-long camp.

The two headed back to Lincoln after the day in Goodland.

For information about the camp go to www.goodlandnet.com/gac, and click on the Challenger British Soccer logo.

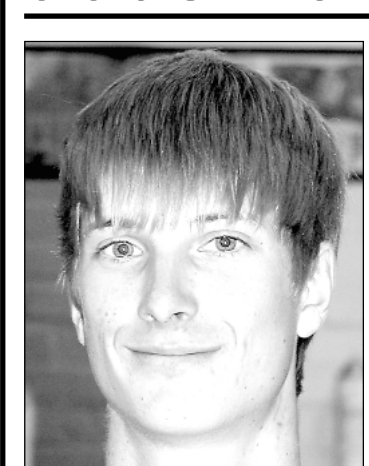
Century-old company diversified

COMPANY, from Page 1

Kansas Bioscience Authority, the National Institute for Strategic Technology Acquisition and Commercialization and Sunflower Electric Power Corp.

Gardenview says it has negotiated a letter of intent with Fagen Inc. of Granite Falls, Minn. to develop the plant. Construction is expected to begin in the fall with production to begin in the summer of 2009.

student of the week



Student Comment: My favorite subject is woodworking class and after graduation I will remember all the trips that I have taken through various activities.

Activities involved in at school: Baseball, Band, Electric Car and Science Olympiad.

My choice of movies, books, and games: I enjoy watching comedies, reading Calvin & Hobbes and listening to classic rock.

After I leave Goodland High School I intend to: go to Fort Hays State University and major in Wildlife Biology.

And 10 years from now, I think I'll be: a wildlife biologist living in Colorado or Montana.

Favorite Quote: "Life is what we make of it, always has been and always will be."
- Grandma Moses

MOORE TIRE SERVICE

24 Hour Mobile Tire Service
Farm- Truck - Passenger

Garry Moore - Kanorado, Kan. 67741
Cell (785) 821-0039 Toll Free (866-286-4117)

RICHARDSON'S HOMESTEAD REALTY AND AUCTION

JUST LISTED ~ 304 WASHINGTON



IMPECCABLE CONDITION! Built in 2001, this custom built brick home features vaulted ceilings, large formal living area with fireplace, formal dining room, an office, 3 bedrooms including large master bedroom with bath and double walk in closets. Kitchen boasts ample storage with center island, breakfast bar and includes appliances. Other amenities include double garage, professionally landscaped yard, privacy fence, large covered patio and sprinkler system. Ask listing agent Cynthia Butts to show you this beautiful home today, call 899-2328 or 821-1811.

JUST LISTED ~ 926 E. 2ND



Built in 2003, this beautiful custom built home will take your breath away! If you're looking for a large home with the latest features, this is it! Offering over 2600 sq. ft. on the main level, features include an exquisite family room with fireplace, formal dining room, breakfast nook, a wonderful kitchen with center island, master bedroom with double closets and bath, an additional bedroom, main bath, office, large laundry room and oversized double garage. Basement offers an additional 2000 sq. ft. and includes a large family room, 2 bedrooms, bath, craft room and 2 unfinished rooms currently used for storage. Outside offers a beautiful professionally landscaped yard with a large covered patio, privacy fencing and sprinkler system. Don't miss out on this one of a kind home, contact Cynthia Butts for your showing!

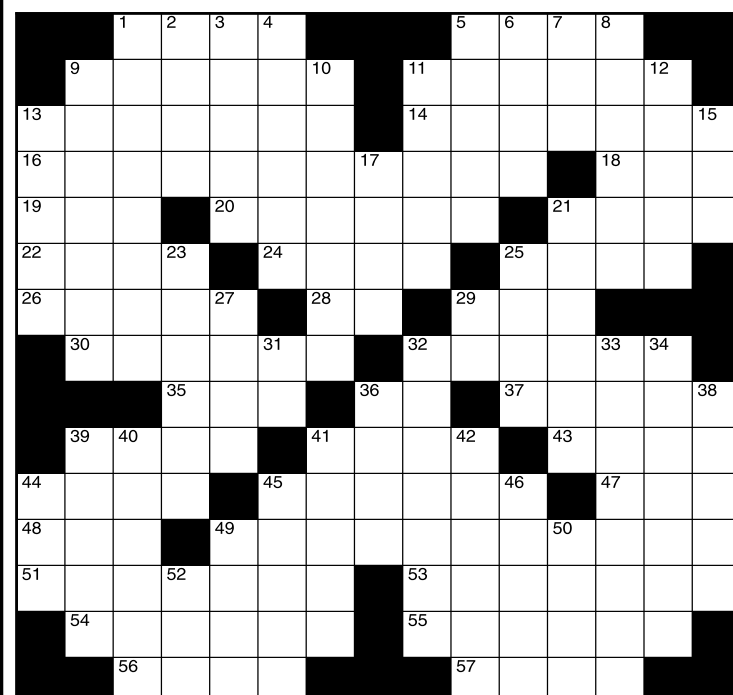
See our web on how to win our \$100 Shopping Spree

785-899-2328 800-974-2426
1023 Main Street ~ Goodland, Ks



Terry Richardson Donna Moore Cynthia Butts
www.goodlandhomestead.com
E-mails: Terry, Donna or Cynthia@goodlandhomestead.com

Crossword Puzzle



CLUES ACROSS

- Russian monarch
- Emotional disposition
- Lopped
- Hollandaise or tartar
- Member of a governing board
- Japanese firm
- Faneuil Hall statue
- Samuel Haya_a, U.S. Senator
- Any high mountain
- Baseball championship playoff
- Melon, cucumbers, pumpkin
- Ceases to live
- Lacking the sense of hearing
- Incline from vertical (Geology)
- Pass into
- Samarium
- Mown grass
- One who accompanies another
- Address for a nobleman
- __center: earthquake focus
- Rupee
- Olive oil acid
- The surface of an object
- Departure from the vertical
- From a distance
- Counterbalance to obtain net weight
- Magnitude relations
- Large Australian flightless bird
- Group insurance
- 5th U.S. President
- IHOP specialty
- Noticeable

CLUES DOWN

- Proclaims loudly
- A people of W. Africa
- Poker stakes
- Spun
- Disfigures
- Opposite of ins
- B__ Raton - 33428
- Adorned with finery
- Sugar, butter and pecan candy
- Most beloved
- WW II Allied HQ
- Surface configuration
- 18th Hebrew letter
- __ Jima, WW II battlefield
- Circle width (abbr.)
- Disc jockey bribe
- Withdraw from an organization
- Circle of light around the moon
- A strong cord
- Hello
- Rhode Island
- Joan Rivers' daughter
- Game officials
- Engagement stone
- An established ceremony
- Holds vinegar for the table
- Park Hotel Kenmare Spa
- Pressed
- Domesticates
- Love apple
- Thrust horse power (abbr.)
- Middle Eastern liquor
- The lawmaker of Athens
- American born music
- Number of cat's lives
- Data executive

The crossword puzzle brought to you by:



dine-in 1803 Cherry
carry-out Goodland, Kan.
delivery 67735
899-3661

Classifieds work! Call 899-2338!