

People want at-large vote

By Tom Betz
t.betz@nwkansan.com

More than 400 citizens stopped by the Goodland Activity Center Tuesday to mark a ballot and express their opinion about voting at-large on county commissioners.

More than two-thirds of those voting want to have the county commissioners ask the state legislature to pass a bill giving Sherman County voters a chance to vote on the question of electing county commissioners at-large.

The mock election was held at the request of the county commissioners by the Government Alliance Committee of Shine On Sherman County.

Trevor Linton, committee chairman said he had a steady stream of people coming in during the morning and they had to make up more ballots in the afternoon.

A total of 419 people came to vote and were marked off a copy of the county voter registration list Linton said.

"That is a turnout of about 11 percent of those registered," Linton said, "and 79 percent (333) voted YES while 86 (21 percent) voted NO."

He said the results were similar to those the committee had received from a similar effort during the Northwest Kansas District Free Fair in August.

"We were pleased with the turnout," he said. "We had hoped by being close to the voting poll at the Veterans of Foreign Wars we would have a higher turnout."

Linton said he was not surprised by the results, and that many of those voting in the mock election said they hoped it was clear enough to give the people a chance for real.

"The members of the committee

are not taking sides on the issue," he said, "but we were hoping to get people as possible to let the commissioners know what the opinion is throughout the county."

The committee held a public forum at the fair, and set up a ballot box to give people a chance to record their opinion.

He said the committee was a bit disappointed in the response at the fair getting a total of 87 people to record their vote in that week.

"That is only 2.4 percent of the registered voters (3,570)," he said. "Of those 58 said YES (67 percent) and 21 were NO (24 percent)."

"The majority apparently want the chance to vote," he said, "but it will have to go back to the legislature in Topeka in January."

The Government Alliance Committee is planning a special evening chili supper on Dec. 2 to address the second question about the potential consolidation of city and county services. Linton said the committee has asked people from Greeley county to come and talk about the consolidation program that county has approved.

The committee has been working to try to gather information for the city and county commissioners to explore the options about consolidating services with an eye to more efficient use of people and equipment Linton said.

Kit Carson County had a related at-large question on Tuesday's ballot that passed 812 to 759. A person at the Kit Carson County Clerk's office said Wednesday the Burlington school district had asked the voters to decide if the board members should be voted on at-large.

The person said the at-large voting issue passed, but a bond issue for the school district was defeated.

Hospital reduces work accidents, costs

By Sharon Corcoran
s.corcoran@nwkansan.com

A large number of costly work accidents in 2003 resulted in high workers' compensation insurance premiums for the next three years at Goodland Regional Medical Center, but safety efforts in the past four years have helped bring the premiums back down.

The hospital had annual premiums of \$34,506 and \$37,848 in 2001 and 2002, respectively, but after having 29 accidents, resulting in \$597,738 in costs, the hospital's premiums went to \$78,490 in 2004, \$111,906 in 2005 and \$139,156 in 2006.

The hospital had 34 accidents resulting in \$3,545 in costs in 2001 and 24 accidents resulting in \$129,221 in costs in 2002.

In 2003, the premium went up to \$49,923. In 2004, the hospital had 18 reported accidents for \$47,721 in costs, in 2005 20 accidents with no costs and in 2006 13 accidents for \$110 in costs, but the premiums remained high in those years.

In 2007, the hospital had 15 reported accidents for \$44,236 in costs

and had \$103,687 in premiums. This year's premium is \$59,463; the number of accidents and costs are not complete for the year.

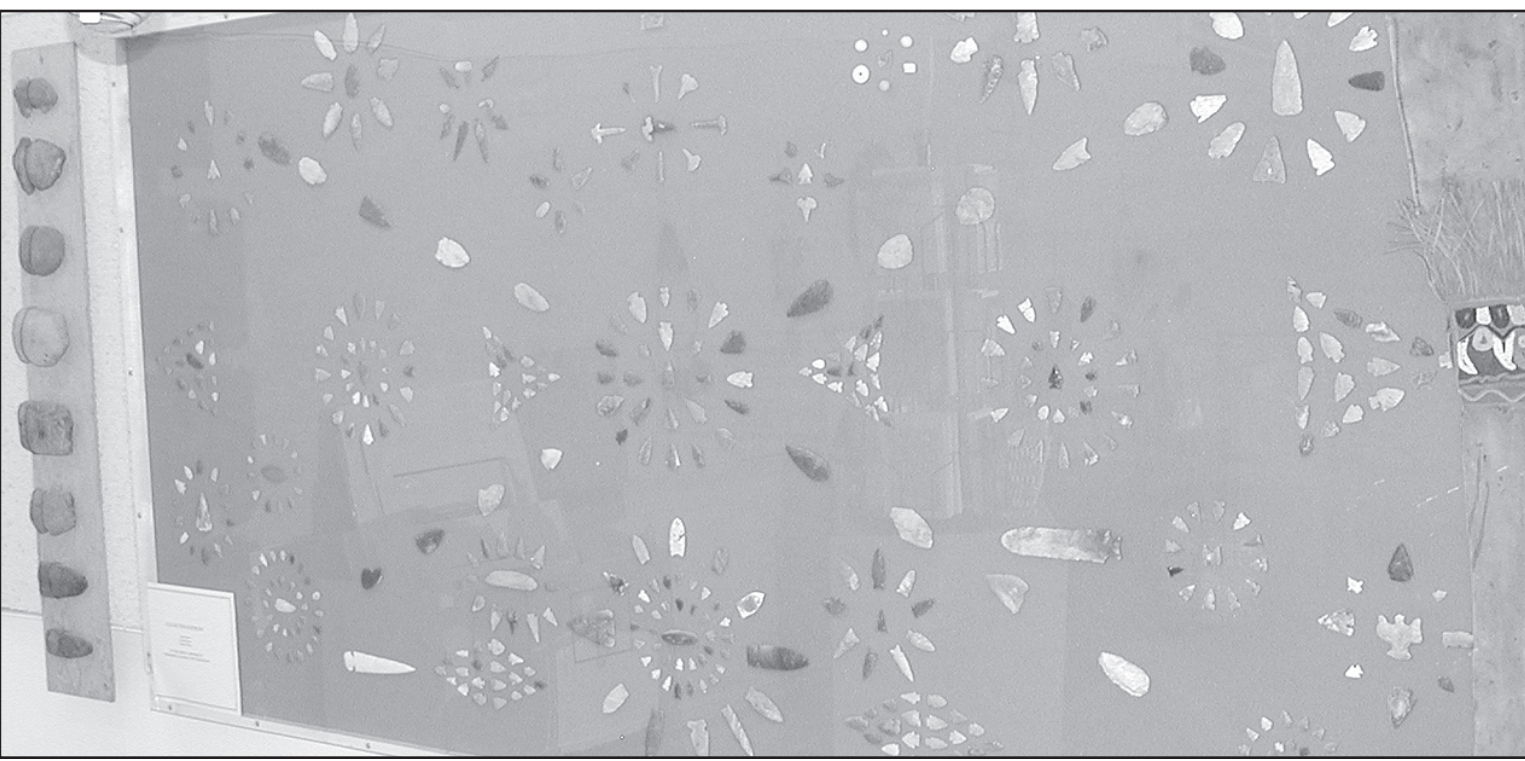
The safety efforts are coming along well, said Dale Schields, human resources director. It comes from the top, he said, adding that Administrator Jay Jolly and Chief Financial Officer Jim Precht have supported the efforts.

Schields chairs the safety committee, Jolly said, and has done well coordinating safety efforts.

"We are trying to bring the premiums down further next year," Schields said.

corrections

The Goodland Star-News will correct any mistake or misunderstanding in a news story. Please call our office at (785) 899-2338 to report errors. We believe that news should be fair and factual. We want to keep an accurate record and appreciate you calling to our attention any failure to live up to this standard.



Arrowheads (top) owned by Gerald Paxton, Windwoman Originals (left) by Marilyn Cooper and turned wood (above) by Bernie Weishapl are on display at the Carnegie Arts Center this month.

Photos by Sharon Corcoran/The Goodland Star-News

Arrowheads, art displayed at center

By Sharon Corcoran
s.corcoran@nwkansan.com

Native American arrowheads and tools, art inspired by the "Indians" and turned wood are all on display this month at the Carnegie Arts Center. A reception is planned with more artifacts and information on archeological digs in northwest Kansas.

The featured artist is Marilyn Cooper of Goodland, known in the art world for WindWoman Originals. Wood vases, bowls, pens and other art by Bernie Weishapl of Goodland is displayed, and Gerald Paxton's collection of Native American arrowheads cover a section on the northwest wall, while other tools and artifacts fill a display case.

The exhibit opened Sunday and will be displayed through Sunday, Nov. 30. A special reception will be from 1-3 p.m. Sunday, Nov. 23, and

will include a forum on "Indian Art and Artifacts."

The forum's panel will include Cooper and Paxton along with Dan Busse of Bird City, who has been working with the University of Kansas on the Odyssey Project, an archeological dig near Kanorado. Busse will provide an update on area findings.

Busse will also bring his own artifacts from northwest Kansas to the reception, will explain what is new at digs in Rawlins, Cheyenne and Sherman counties and will answer questions.

The main digs to be discussed are the one at Kanorado and Burnt Wood Creek near McDonald. Busse said, adding the one on his property will also be discussed, as that is where his artifacts are from.

Busse has worked with archeology projects in northwest Kansas

since the early 1980s and said he got involved because his dad was active in finding artifacts. His grandfather homesteaded in northwest Kansas.

"I always had an interest in Indian culture," Busse said.

Busse has given programs on archeology in the area for 20 years, but says the information in this program is fairly new.

Some of what was found wasn't what was expected, he said.

Cooper has received local, state and national acknowledgment for her Native American-inspired art. She grew up in New Mexico, developing a strong affection for the skills of the Pueblo Indians, the pottery, jewelry and weaving.

Interest in the Plains Indians came later, but the appreciation of the talent of strong people who followed the buffalo, their distinct style of beading, quilling and use of skins

was just as inspiring for her.

Most of her adult life has been spent in northwest Kansas, and since retirement, "WindWoman" is happy to spend her time in research, planning and execution of southwest and Native American inspired art.

Paxton's multi-generational collection includes some rare pieces. Although his arrowheads will not be available to buy, said Arts Center Director Kay Younger, the display will certainly be an important addition to the exhibit.

Original Navajo artifacts, including blankets, a sand painting, vase, coasters and paperback books on Navajo rugs will be available to buy, as well as Cooper's art.

Center hours are from 10 a.m. to 5 p.m. Monday through Friday, 10 a.m. to 4 p.m. Saturday and 1 to 4 p.m. on Sunday. The exhibit is spon-

TEXAS RED'S BAR-B-Q
will be at Frontier Ag in Goodland on Monday, November 10 to Friday, November 14
Beef brisket • Turkey Breast • Chicken Halves • Sausages • Pork Ribs
Fountain Drinks, chips and snacks also available inside!
*Formerly Frontier Equity Exchange in Goodland

BRITTNEY'S Photography
COSTUME CONTEST WINNERS!

BEST DRESSED PET AND OWNER ~ ALLISON CURE AND TUCKER	SCARIEST ~ MIKE REYES
CUTEST (1ST) ~ HAYDEN SLOVACEK	MOST CREATIVE ~ DORINDA KRUEGER
CUTEST (2ND) ~ JACKSON EMIG	BEST DRESSED FAMILY ~ MICHAEL, CORTNEY, NATALIE, AND KADEN DORN (FLINTSTONES) JOSH MCQUITT & EMILY BRAXMEYER (RUBBLES)

THANK YOU TO EVERYONE WHO PARTICIPATED!
785.890.6448
WWW.BRITTS-PHOTO.COM

Come have lunch and support the animal shelter!
NOV. 8TH, 2008
10:00 a.m. to 2:00 p.m. at Orscheln's in Goodland, Kan.
Nachos, Tacos 'N a bag, soft drinks
** Schwan's Truckload Sale **
Schwan's has a great selection for your holiday planning!
A portion of the sales will go to the Northwest Kansas Animal Shelter.