

## weather report



**42°**  
noon  
Monday

### Today

• Sunset, 4:23 p.m.

### Saturday

• Sunrise, 6:56 a.m.  
• Sunset, 4:24 p.m.

### Midday Conditions

• Soil temperature 39 degrees  
• Humidity 62 percent  
• Sky cloudy  
• Winds north 15 mph  
• Barometer 29.54 inches and rising  
• Record High today 76° (1939)  
• Record Low today -23° (1919)

### Last 24 Hours\*

High Sunday 68°  
Low Sunday 30°  
Precipitation none  
This month 0.09  
Year to date 0.09  
Above normal 0.82 inches

### The Topside Forecast

Today: Mostly cloudy becoming sunny with a 20 percent chance of snow before 8 a.m., high near 31, winds out of the north at 15 to 35 mph and a low around 17.  
Wednesday: Mostly sunny with a high near 48, wind out of the west at 10 to 15 mph and a low around 22.

### Extended Forecast

Thursday: Partly sunny with a high near 44 and a low around 22.  
Friday: Partly sunny with a high near 48 and a low around 19.  
(National Weather Service)  
Get 24-hour weather info. at 162.400 MHz.  
\*Readings taken at 7 a.m.

## local markets



### Noon

Wheat — \$4.32 bushel  
Posted county price — \$4.20  
Corn — \$2.80 bushel  
Posted county price — \$2.77  
Milo — \$2.14 bushel  
Soybeans — \$6.77 bushel  
Posted county price — \$7.12  
Millet — \$7 hundredweight  
Sunflowers  
Oil current crop — \$13.15 cwt.  
Confection — \$35/\$23 cwt.  
Pinto beans — \$32 (new crop)  
(Markets by Scouler Grain, Sun Opta, Frontier Ag and 21st Century Bean. These may not be closing figures.)

## inside today



More local news, views from your Goodland Star-News

# Wreath auction helps Chamber

By Tom Betz

nt.betz@nwkans.com

More than 220 attended the Goodland Chamber of Commerce Christmas party and dance on Saturday at the Goodland Elks Lodge to enjoy a good evening and help raise money for the organization.

The evening included a prime rib or chicken dinner, Christmas wreath auction and music by Jimmy Dee and his band the Fabulous Destinations from Russell.

Businesses and organizations around the community decorated wreaths to be sold in the auction, and 25 wreaths were sold by auctioneer Chris Soehner between the dinner and start of the dance.

Most wreaths were sold for about \$40, but one made from pheasant feathers was the highest, going for \$130. A purple Kansas State wreath went for \$70 as did a wreath from Klip 'N Kurl Salon. One from Elliott's went for \$60 as did ones from Rasure Lumber and Farm Bureau. A wreath decorated by the Goodland High School art department brought \$50.

A wreath from *The Goodland Star-News* had a compass in the middle with NEWS, and the outside said "comes from all over." That is a favorite of John Golden who asks people what NEWS stands for — "North, East, West and South. News comes from all over," he says.

The 25 wreaths sold for more than \$1,100 to help the Chamber projects.

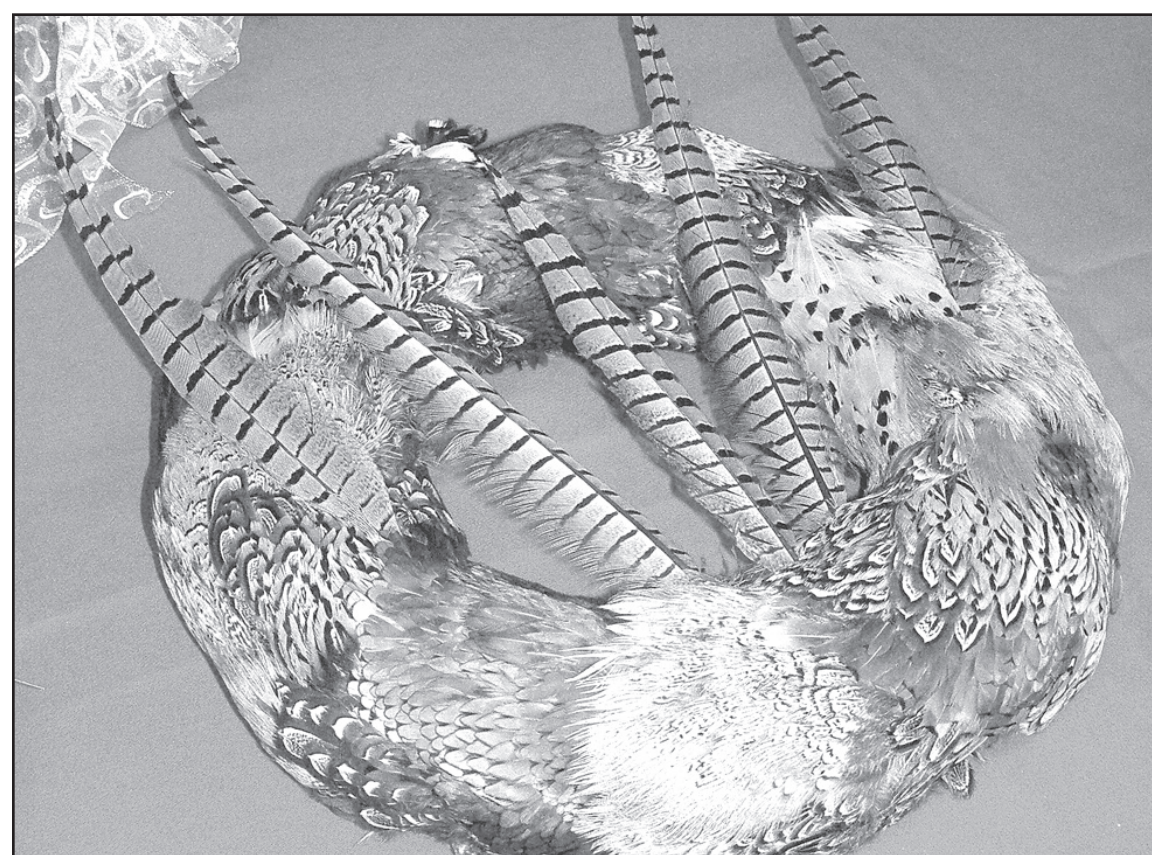
Jimmy Dee and the Fabulous Destinations kept the dance floor full as they played a combination of oldies and rock 'n roll. Band members are: Jim Schmidtberger (Jimmy Dee), Russell; Bill Gasper, Ellis; Raphael "Ray" Schmidtberger, Ellis; Tim Pfeifer, Hays; Anthony Pfeifer, Hays, and Joe Dreiling, Victoria.

Dee said the band used to come to Goodland about 10 times a year, but lately they have been down to once and were glad to be there. He said the band has been playing for more than 30 years, and he thinks this will be the last performance, as he is retiring.

*Summer Fun*, a compact disk by



Jimmy Dee and the Fabulous Destinations (above) entertained the crowd at the Chamber Christmas dinner on Saturday at the Elks Lodge. Between dinner and the dance a Christmas wreath auction was held and the top wreath was one made from pheasant feathers (right) that brought \$130.



Jimmy Dee and the Fabulous Destinations, is filled with rock and roll classics of the 1950s like "Glad all Over," "Woolly Bully," "Sixteen Candles," "Splish Splash" and nine others. Jimmy Dee has been a popular dance band in the midwest for a number of years. Songs on the CD were recorded live in areas throughout northwest Kansas. It is available through Kansas Originals on line at <http://kansasoriginals.com>.

# Survey favors citizen vote on at-large issue

By Tom Betz

nt.betz@nwkans.com

For the third time citizens have indicated they want the opportunity to vote on the question of at-large election of county commissioners during the Shine On Sherman County open forum held Tuesday at the Elks Lodge.

Those attending the meeting to hear the people from Greeley County talk about their unification efforts were given a survey on the at-large commissioner issue when they signed in, said Trevor Linton, chairman of the Government Alliance Committee, which was asked by the Sherman County commissioners to hold a series of public forums.

Committee member Darin Neufeld reported the results of those who answered the survey on Thursday with 84 percent saying they were in favor of the county asking the state Legislature to allow the voters of Sherman County to determine the county commissioner at-large or district issue.

More than 50 people attended the meeting on Tuesday, but Linton said not everyone took a survey. He said some of those who did not participate came in late, and did not sign in or get a survey. Of those attending, 31 voted in the survey.

Neufeld said of those answering the survey 26 were checked Yes, with 5 (16 percent)

checking No.

He said the survey had two parts with the first asking "Do you support the position that the voters should be allowed to determine the outcome of the at-large/district voting for county commissioner?"

For those answering Yes to the first question there was a second question "If you support a change in our county commissioner structure, which format most closely represents the structure you would like to see?"

There were three options to the question.

A. was the existing three commissioners coming from districts, but voted on by the whole county. (Two people checked this op-

tion for 7 percent.)

B. was three county commissioners without districts voted on at-large by the entire county. (Eight people checked this option for 30 percent.)

C. was having five county commissioners with three coming from the existing districts and adding two at-large. All five would be voted on by the whole county. (A total of 17 checked this option for 63 percent.)

Neufeld said the numbers for the options did not add up because one person who voted in favor of the first question did not check one

See SURVEY, Page 9

# Ham operators gather for Skywarn contest

By Tom Betz

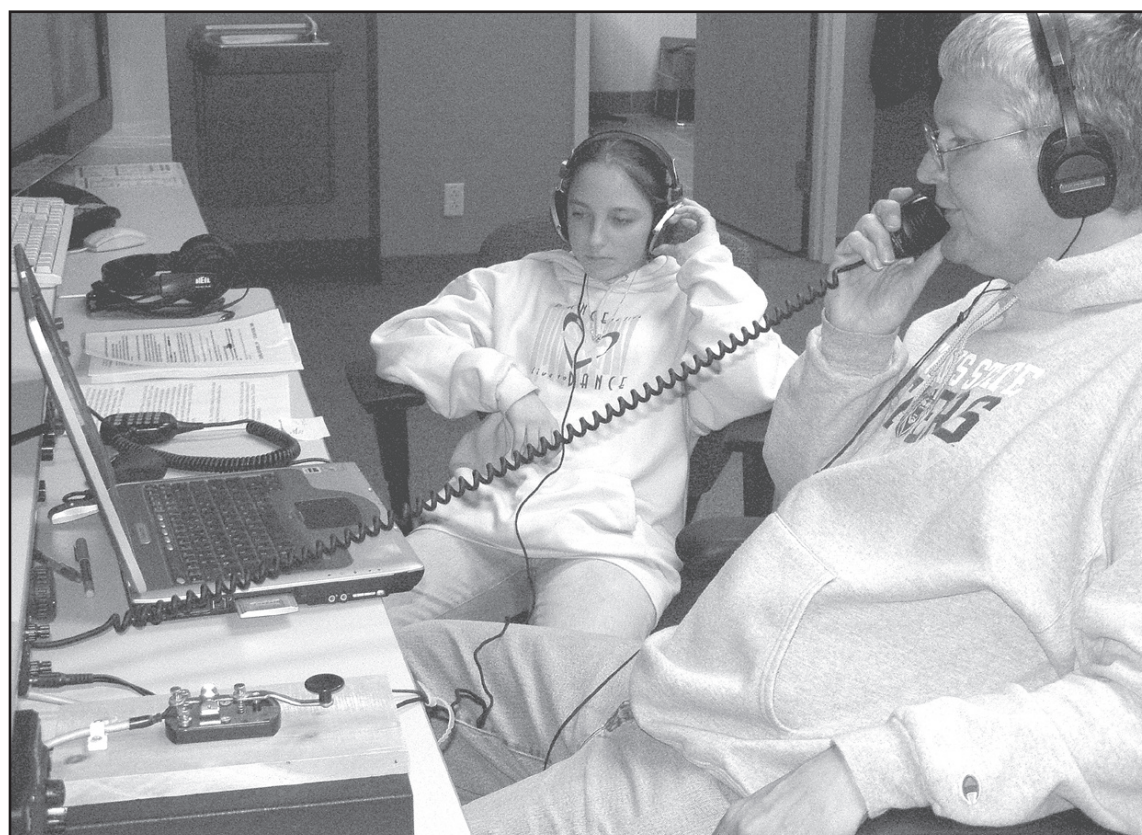
nt.betz@nwkans.com

The radio signal crackles and the operator speaks into the microphone saying CQ and giving the call sign WX0GLD seeking contact with another radio station somewhere in the world.

Suddenly through the static a voice repeats the call sign and gives his own to establish a contact. Over the next few minutes, the two ham radio operators exchange their names, where they are located and a short weather report to go in the log.

Once the contact is established and the information exchanged, both stations thank each other for the call and again begin seeking other stations to repeat the contact procedure.

Friday afternoon a small dedicated group of amateur radio operators gathered at the Goodland National Weather Service office to kick off the 10th Annual SKYWARN Recognition Day special event to honor the amateur radio operators who help as storm spotters and providing



Scott Mentzer (right) called on the radio to make contacts and Amy Floyd, 14, listened on a second headphone set to help identify and log contacts made during the 10th Annual Skywarn Recognition Day contest held Friday and Saturday at the National Weather Service office.

Photo by Tom Betz/The Goodland Star-News

See HAMS, Page 9

## Senior citizen annual dinner on Wednesday

The Goodland School District will show its appreciation to senior citizens at its annual dinner starting at 11 a.m. on Wednesday with musical entertainment and at noon a turkey dinner with mashed potatoes and gravy, dressing, green beans and pumpkin pie at the Goodland High School gym.

Guests will be met at the south doors and be escorted in by students, and other students will park their cars for them.

Music will be provided by students from both the vocal and instrumental departments including jazz band, vocal solos, piano solos and choirs.

The school sent out over 600 invitations to senior citizens in Sherman County but all senior citizens are welcome to come, said Sarah Short, sponsor for Family, Career and Commu-

See DINNER, Page 9

