

# Kiwanis Demo Derby kicks off fair week fun

By Tom Betz  
nt.betz@nwkansas.com

Cars crash, smash and crowds will cheer the drivers on at the annual Kiwanis Demo Derby on Saturday night after the Northwest Kansas District Free Fair parade to open fair week.

The fair parade will be held at 5 p.m. and will travel up Main Ave. from 17th to Eighth. The 4-H Ambassadors have chosen the theme "The greatest show on dirt," for the parade and fair.

The parade route will begin at 17th and Main and will proceed north to 8th Street. Line up will begin at 4:00 p.m. Participants will need to check in and pick up their entry number at the Ambassador Booth at 17th and Main. Judging will be done during the parade. Three top places will be awarded.

The Sherman County home owned carnival will open the rides and games at 7 p.m. on Saturday as part of the opening night festivities.

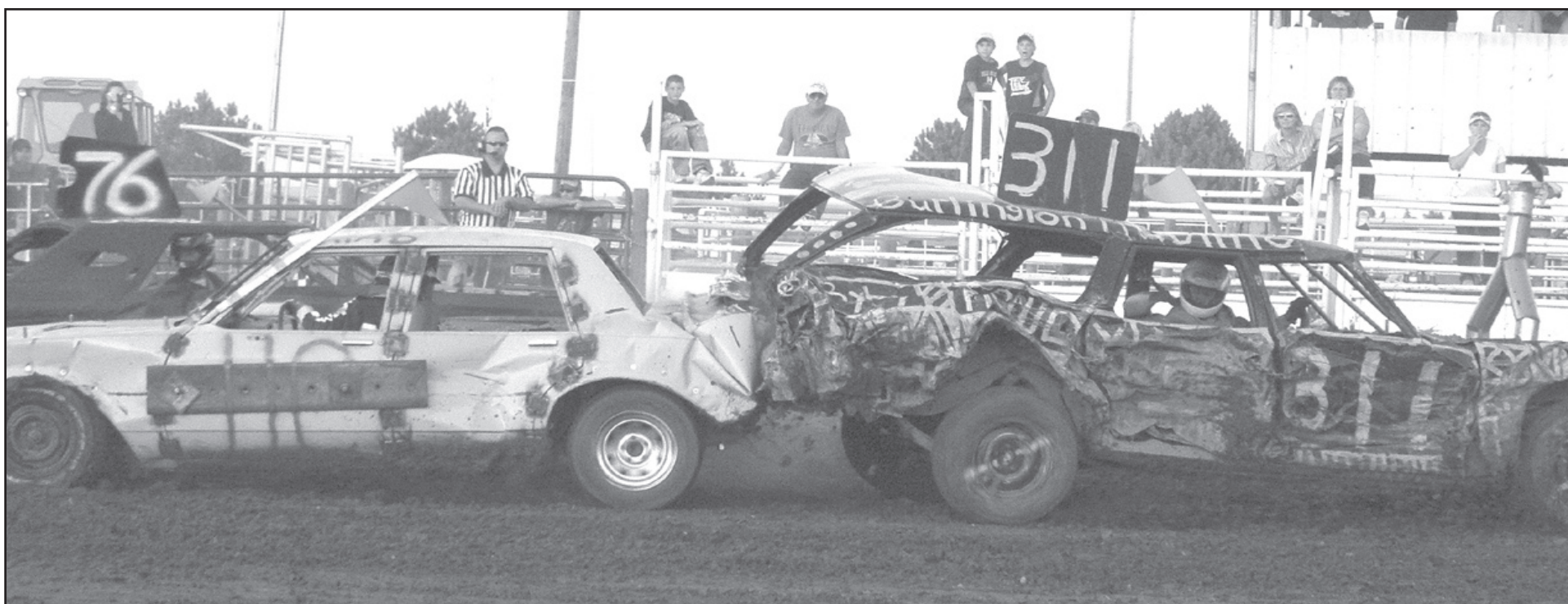
Rich Simon, Kiwanis project leader, said he is hoping to have as many cars as last year, and could add a pickup division this year. He said people asked about smashing pickups and he said if at least six enter he would hold a pickup demo heat.

The derby has two classes for cars from 1980 and older and 1980 and newer.

Simon said they had 28 cars entered last year, and ran four heats of seven cars. He said if there are enough pickups he would probably run a heat between the last heat of cars and the finals.

Prizes will be given to the winner of the demo derby and a Mad Dog (aggressive driver) award and Rookie Driver awards will be given.

He said this year Goodland Kiwanis will be working with Cheyenne County and Thomas County to offer \$1,000 in prize money to the top winners of the three demo derbies. The top points winner in all



Demo Derby drivers (top) smashed into the rear of the cars trying to disable one or another in last year's event. The Sherman County Rural Fire (above) provides safety

help and wets down the arena between heats.

Photos by Tom Betz/The Goodland Star-News

three will get \$500. Second place will get \$300 and third place will get \$200.

The third demo derby will be held at the Cheyenne County Fair.

The Colby demo will be at 7 p.m. on Wednesday. The Kiwanis derby is 7 p.m. on Saturday, and the Cheyenne County derby is 6 p.m. on Saturday, Aug. 7.

The Sherman County Rural fire department helps wet down the arena to get it ready for the cars, and firemen are stationed around the arena in case of an emergency. Sherman County road and bridge and several other people with wreckers, dozers and auto lifters help clear the arena after each heat.

Kiwanis member Jeff Mason, who announces for the derby, said the club sponsors the Hamburger Shack and Demo Derby at the fair to make money for its community projects. The group, chartered in 1949, last year gave more than

\$5,000 in scholarships to Goodland High School graduates and to students attending Northwest Kansas Technical College.

Kiwanis provided about \$15,000 in financial help to Goodland schools and their clubs and organizations, Genesis, the Carnegie Arts Center, the Goodland Library Summer Reading Program, Project Graduation and many other community projects, he said.

The club is responsible for putting out more than 550 American Flags throughout the town on major holidays. Chief Ray Smee, Kiwanis member and co-chair of the flag project, said the number of flags has steadily grown this year and will be more than 600 when the volunteers put the flags out for Labor Day, Sept. 11 and Veterans Day on Nov. 11. The flags were put out for Flag Day, Memorial Day and July 4.

"Without the support of the Kiwanis Hamburger Shack, Demo



Derby and flag project," Mason said, "the club could not do what it does for the community."

To the Citizens of Graham, Sheridan, Sherman & Thomas Counties,

On Tuesday, August 3, you have an opportunity to make sure Northwest Kansas has true conservative leadership in the Kansas House of Representatives by **re-electing Rep. Jim Morrison in the District 121 Republican primary election.**

This letter is not initiated by Rep. Morrison – rather, we're his Republican colleagues in the Legislature who wish him well as he faces surgery soon. We believe his re-election in the primary on Aug. 3 would surely be good medicine for him.

Though Rep. Morrison may not be able to contact each of you personally this campaign, we want you to know that his continued leadership is needed in the Legislature.

Rep. Jim Morrison has been fighting to protect your hard-earned tax dollars, property and jobs in his outstanding service in the Legislature. **Rep. Morrison voted against the \$1.5 billion tax increase passed in the Legislature this year.**

Rep. Morrison advocates fiscal responsibility, family and pro-life values, and policies that encourage job growth and personal freedoms. **You will again be well served by re-electing Rep. Jim Morrison in the Aug. 3 Republican primary.**

In the 2010 session, Rep. Morrison was Chairman of the Government Efficiency and Fiscal Oversight Committee – and we need him to continue his leadership in that role. Kansas again faces unprecedented budget challenges, and Rep. Morrison's experience, knowledge and prudent leadership are the best way to assure Kansans of a state government that works for them and respects each and every tax dollar.

We appreciate your support of Rep. Morrison and hope that your vote ensures his return to his important work for your community and the state of Kansas.

Respectfully,

- Rep. Mike O'Neal – Speaker of the House
- Rep. Anthony Brown – Chair, Financial Institutions Committee
- Rep. Steven Brunk – Chair, Commerce and Labor Committee
- Rep. Peter DeGraaf – Vice-Chair, Joint Committee on Children's Issues
- Rep. Owen Donohoe – Vice-Chair, Economic Development and Tourism Committee
- Rep. John Faber – Chair, Agriculture and Natural Resources Committee
- Rep. Mario Goico – Vice-Chair, Veterans, Military and Homeland Security Committee
- Rep. Carl Holmes – Chair, Energy & Utilities Committee
- Rep. Mike Kiegerl – Vice-Chair, Joint Committee on Children's Issues
- Rep. Lance Kinzer – Chair, Judiciary Committee
- Rep. Forrest Knox – Vice-Chair, Energy and Utilities Committee
- Rep. Brenda Landwehr – Chair, Health and Human Services Committee
- Rep. Joe McLeland – Chair, Education Budget Committee
- Rep. Ray Merrick – House Majority Leader
- Rep. Don Myers – Chair, Veterans, Military and Homeland Security Committee
- Rep. Connie O'Brien – Aging and Long-Term Care Committee
- Rep. Larry Powell – Chair, Agriculture and Natural Resources Committee
- Rep. Sharon Schwartz – Chair, Select Committee on KPERS
- Rep. Arlen Siegfried – Chair, Interstate Cooperation Committee
- Rep. Joe Siewert – Joint Committee on Economic Development

Rep. Morrison also recently served on the Kansas House Health & Human Services Committee, and on the Joint Committee on Information Technology. He is endorsed by the Kansas Chamber of Commerce, Kansas Farm Bureau, the Kansas NRA, Americans For Prosperity and Kansans for Life.

Rep. Morrison's work in the Legislature has saved Kansans millions of dollars and protected property owners, businesses and families. See a much larger list of Rep. Morrison's accomplishments here: [www.morrisonfamily.com/repjim/biography/biography.htm](http://www.morrisonfamily.com/repjim/biography/biography.htm)

Paid for by Owen Donohoe

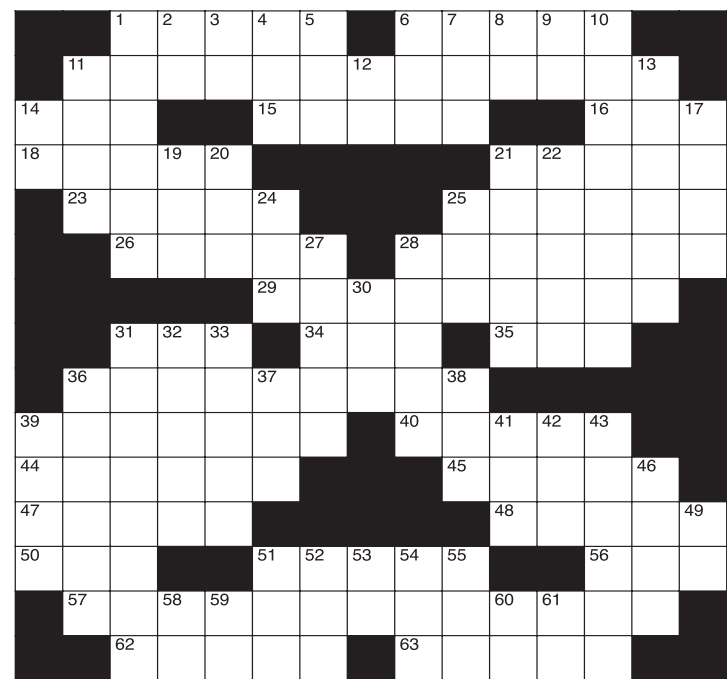


Rep. Jim Morrison proudly serves District 121 in Kansas.



Rep. Morrison, shown here in the House Chamber at the Capitol, works diligently on multiple committees in the Legislature.

## Crossword Puzzle



- CLUES ACROSS**
- 1. A fencing sword
  - 6. Alda and Thicke
  - 11. Phone connection
  - 14. Navigational chart
  - 15. 48846
  - 16. Swiss river
  - 18. Increase a bet
  - 21. Rivne (Russ. sp.)
  - 23. More inept
  - 25. Read again
  - 26. Heroic tales
  - 28. African expeditions
  - 29. NE Italian mountains
  - 31. \_\_\_ de Janeiro
  - 34. Household god (Roman)
  - 35. CNN's founder \_\_\_ Turner
  - 36. Robust hairy social bee
  - 39. Where to apply deodorant
  - 40. Not drunk
  - 44. Made #11 across
  - 45. Dover sole genus
  - 47. English architect Lasdun
  - 48. Mussel beard tufts
  - 50. \_\_\_ Lanka
  - 51. More scarce
  - 56. Fiddler crabs
  - 57. Span. surrealist painter
  - 62. A gentle poke
  - 63. Chicago film critic Roger
- CLUES DOWN**
- 1. Reddish browns
  - 2. Aluminum (abbr.)
  - 3. Exist
  - 4. Indicates near
  - 5. 17th Greek letter
  - 6. Black Am. cuckoo
  - 7. Pastureland
  - 8. Atomic #89
  - 9. Sodium
  - 10. Driveled
  - 11. Afrikaans
  - 12. Not off
  - 13. Roofed patios
  - 14. Mister
  - 17. Fishing poles
  - 19. Senior officer
  - 20. Records brain currents
  - 21. Measure again
  - 22. Speak
  - 24. Cool
  - 25. Adult male sheep
  - 27. Footwear bottoms
  - 28. Open skin lesions
  - 30. Scientific research workplace
  - 31. Person from Romania
  - 32. Express indirectly
  - 33. Drama awards
  - 36. Prickly plants
  - 37. Br. equivalent of Inc. Association (abbr.)
  - 38. Winged goddess of the dawn
  - 39. Totes up
  - 41. Kids star \_\_\_ The Builder
  - 42. MN 55731
  - 43. Concrete outcome
  - 46. Construction Inspectors Association (abbr.)
  - 49. Farm state
  - 51. Scrap of cloth
  - 52. Lemon or lime summer drink
  - 53. Early pharaoh
  - 54. Before
  - 55. Confederate soldier
  - 58. Lutetium (abbr.)
  - 59. Feb. holiday (abbr.)
  - 60. Delaware
  - 61. Ancient Armenian God

The crossword puzzle brought to you by:

The  
**Goodland Star-News**

1205 Main, Goodland, Kan. 67735  
(785) 899-2338