

Mavericks open season winning two home duals

The wrestlers from Northwest Tech mopped the floor winning 54-6 against the wrestlers from Wentworth Military Academy of Lexington, Mo., on Monday, Oct. 31, at Larry Keirns Fitness Center.

"After an opening 125 pound forfeit, Justin Rascon was pinned by Wentworth Military Academy's Anthony Henley (Clay Center) standout," said Northwest Tech Coach Steve Lampe.

"From that point on there was little opposition as Northwest Tech pinned the next seven weights and received a forfeit at 285 due to no entry. Lineup was exactly the same as Friday evening."

The next action for the wrestlers is at 6 p.m. on Friday, Nov. 11, against Colby Community College at the Larry Keirns Fitness Center on the campus of Northwest Tech.

Friday the Northwest Tech wrestlers competed against Air Force Prep of Colorado Springs, Colo., and won 45-30.

"The Air Force Prep dual was one with some outstanding talent," said Coach Lampe. "Air Force Prep brought three two time state champions and perhaps the most talented, a state runner-up from the U.S.A.'s most powerful high school wrestling state Ohio. The team score is somewhat confusing as five Air Force Prep wrestlers weighed in at weights not legitimate for the dual. Coach Tim Alger is amazing in always providing opponents for dual meets and making for interesting and exciting college wrestling."

"125 Miguel Guzman lost a major decision to Josh Martinez, a two time Colorado state champion from Colorado Springs, coached by Billie Gabel formerly from St. Francis. Justin Rascon also lost to Martinez by fall 4:20 but won officially at 133 as Air Force Prep had no 133 pound entry.

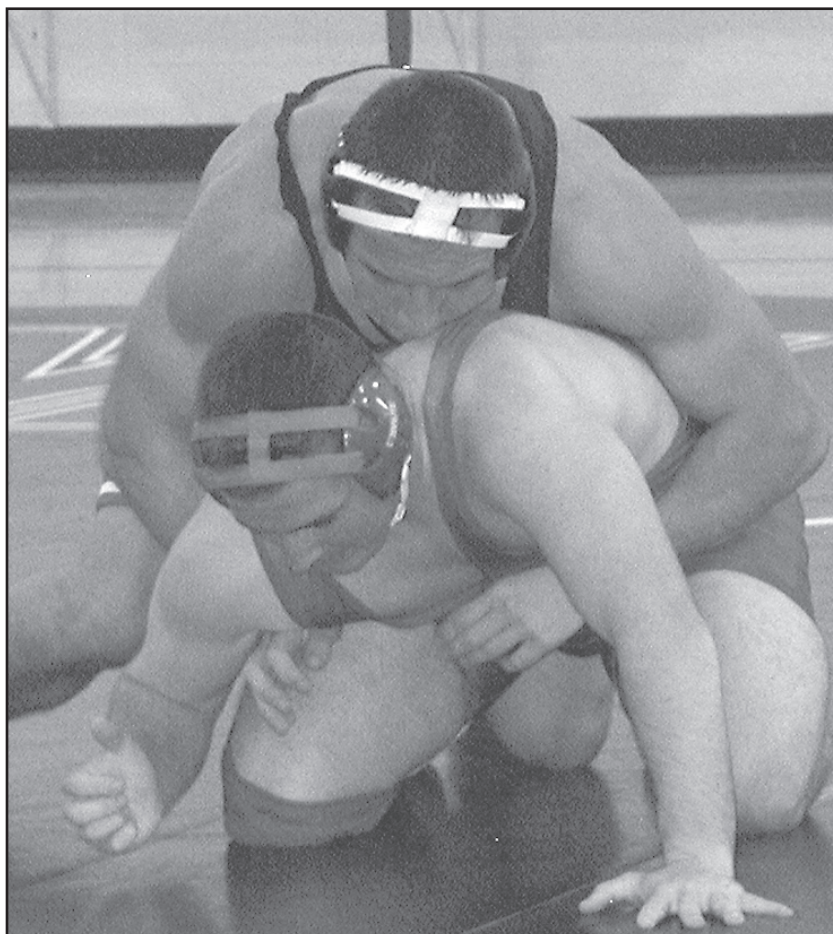
"Brett Terrell, 141 Norton, lost to Brandon Lloyd. 149 another exhibition bout went to Air Force Prep's Spensor Blew, two time state Kansas champion from Salina. Arnold failed to make weight. 157 Daulet Aliev, Uzbekistan, lost a major decision to Tyler Mergen, two time Minnesota state champion, 17-2. Aliev may soon be ordered to return to Uzbekistan as problems he's having with his Visa renewal. We're hoping to resolve the issue but as always we don't have the final say.

"Jaurex Vasquez, Pueblo, Colo., 165 pound won by fall 4:18 over Robert Parati. 174 Johnny Reardon lost exhibition bout by fall 4:18 to Willie Baker. Reardon hails from Clay Center.

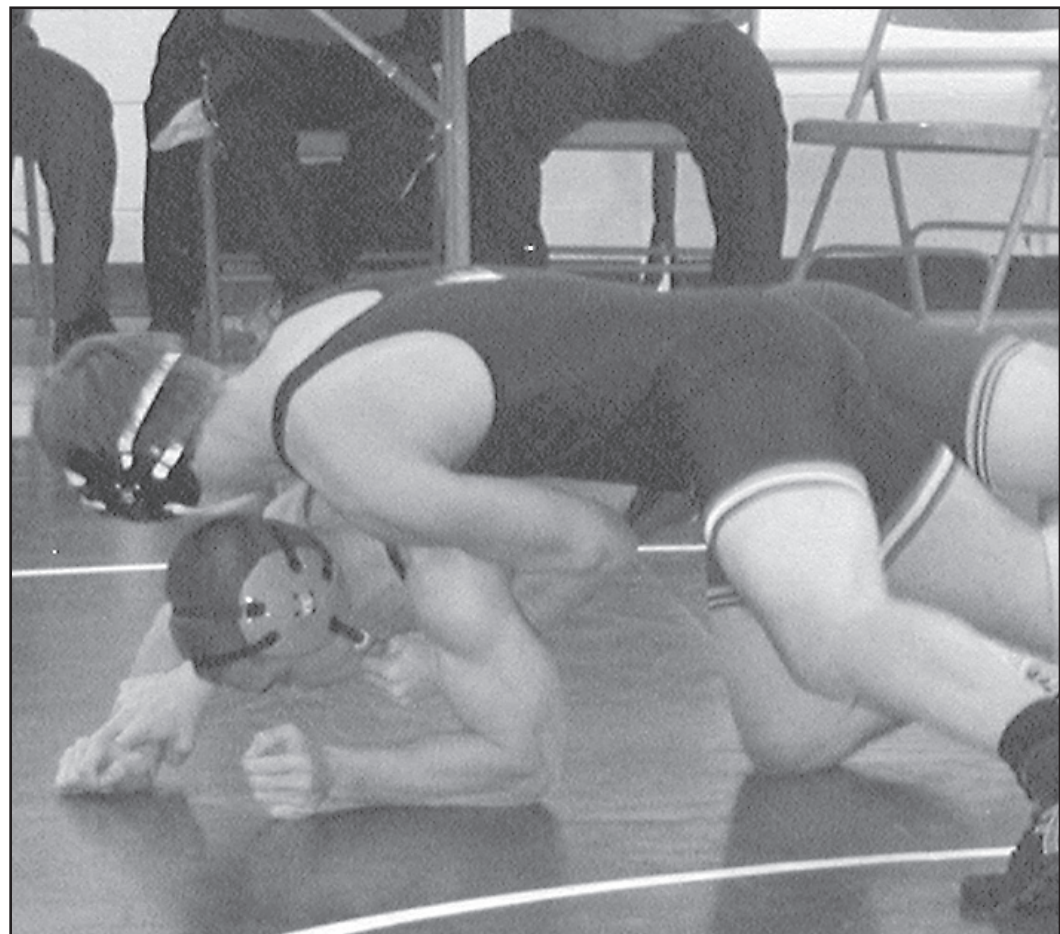
"At 184 Alex Ientushenko was pinned by Kenner Witt, Ohio Stand-out. However, Alex is lacking collegiate knowledge and skills. If he doesn't begin trying to make the adjustment soon he'll have a very long and dismal season.

"Adrei Melni, 197, won by a fall in 5:21 over Jared Koch. Andrei is a great learner, like Alex, came to us with few collegiate skills but is an energized student of wrestling. Very strong and the team's best worker.

"Dion Harris, 285, won by forfeit as Air Force Prep had no opponent," said Coach Lampe.

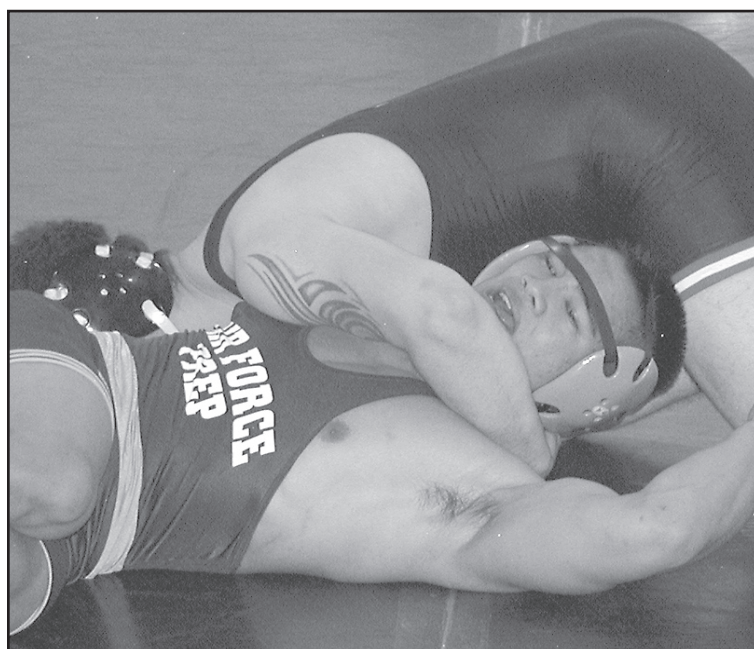


Northwest Tech Maverick wrestler Andrei Melnic at 197 pounds beat Charles Hunkle of Wentworth Military Academy of Lexington, Mo., 7-2, on Monday night at the Larry Keirns Fitness Center on the campus of Northwest Tech. The Mavericks beat Wentworth 54-6.

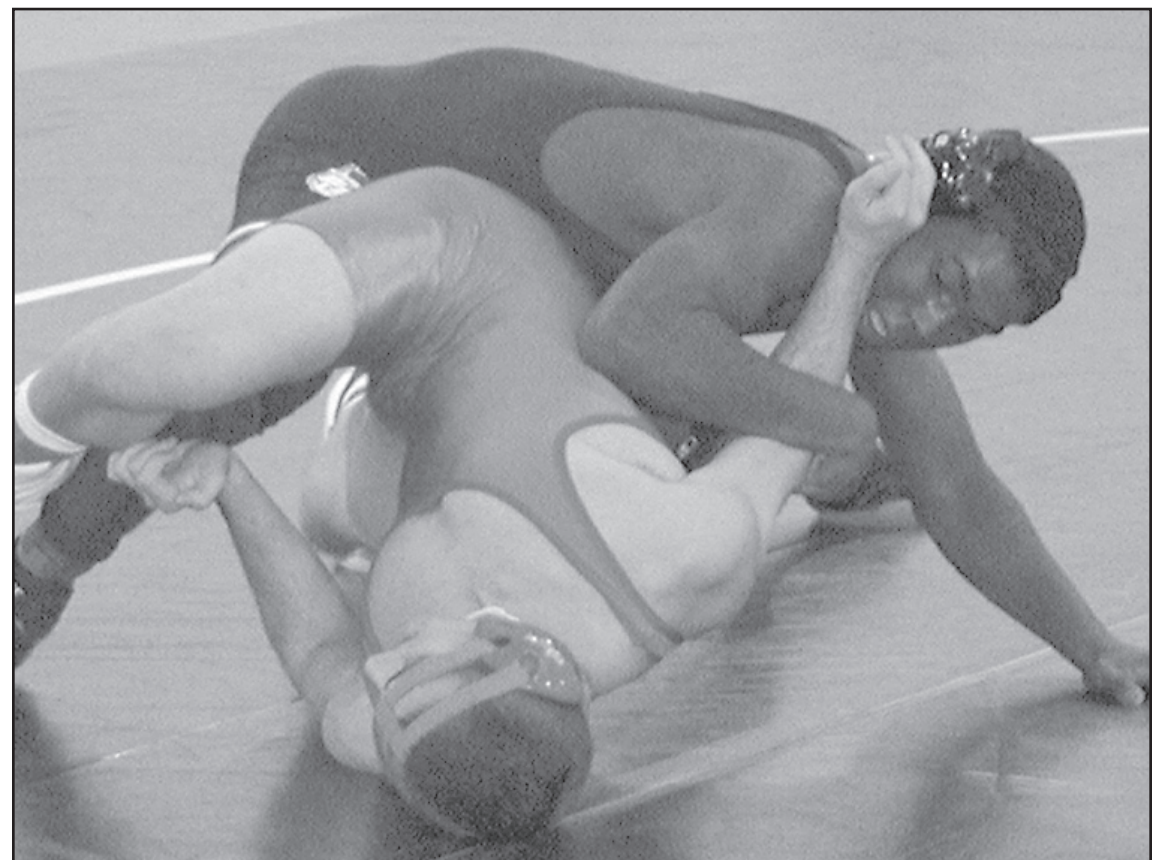


Brett Terrell of the Northwest Tech Mavericks beat Dean Schevker, 12-6, of Wentworth Military Academy on Monday. The Maverick beat them 54-6, winning every match except one.

Photos by Pat Schiefen/The Goodland Star-News



Northwest Tech Maverick wrestler Jaurex Vasquez of Pueblo, Colo., wrestling at 165 beat his Air Force Prep opponent Robert Parati by a fall in 4:18. Northwest Tech wrestled against Air Force Prep of Colorado Springs, Colo., on Friday, Oct. 28, at the Larry Keirns Fitness Center. The Mavericks won 45-30.



Johnny Reardon of Clay Center, Maverick wrestler at 165, lost his bout against Willie Baker of Air Force Prep by a fall in 4:18.

The Goodland Star-News Ad Deadlines
 For Tuesday papers
 Friday Noon
 For Friday papers
 Wednesday Noon
 For Country Advocate
 Friday Noon
 You may call the ad in to
 (785) 899-2338 or stop by the
 Star-News at 1205 Main.

Partnering To Bring Medical Specialists To Goodland

Goodland Outreach Clinic Schedule

Goodland Regional Medical Center
 220 W. Second Street - Goodland

Cardiology
Dr. Christine Fisher
 Monthly - (785) 625-4699

Urology
Dr. Kevin McDonald
 Monthly

Dr. Wallace Curry
 Monthly

(877) 312-1619 or (785) 628-6014



In partnership with Goodland Regional Medical Center
 haysmed.com

Stop throwing away your money!
 ADVERTISE WITH US!

The Goodland Star-News
 1205 Main, Goodland, KS
 (785) 899-2338

Bird City Times
 Box 220, Bird City, KS
 (785) 734-2659

THE NORTON TELEGRAM
 215 S. Kansas, Norton, KS
 (785) 877-3361

The Country Advocate
 155 W. Fifth Colby, KS
 (785) 462-3963

Colby FREE PRESS
 170 S. Penn Ave., Oberlin, KS
 (785) 475-2206

THE OBERLIN HERALD
 170 S. Penn Ave., Oberlin, KS
 (785) 475-2206

The Saint Francis Herald
 Box 1050, St. Francis, KS
 (785) 332-3162

We'll help you sell your stuff!
 Call us today!

The Goodland Star-News
 SUBSCRIBER

Larry McClung

You receive two free passes to see:

COURAGEOUS (PG-13)

Clip and bring to the show.
 Non Transferable

The SHERMAN THEATRE

1203 Main Avenue • (785) 899-6103

PEOPLE WHO READ NEWSPAPERS ARE

BETTER AND MORE EFFECTIVE PARENTS

It all starts with Newspapers

TAXES
 DECEMBER 31, 2011

Time is running out!

Reduce Your Taxes

Colby Community College Tax Credits are still available

Receive a **60%** Kansas State Income Tax Credit on 2011 returns. Depending on your income, you may be eligible to receive a deduction resulting in further savings on your Federal Income Tax.

	Examples	
Contribution to CCC	\$10,000	\$1,000
Less:		
Tax Credit, State of Kansas (60%)	(\$6,000)	(\$600)
Approximate Savings on Federal Income Tax*	(\$2,500)	(\$250)
Estimated Net Cost for Contribution	\$1,500	\$150

All donations are eligible (no minimum).

For tax credit details contact Chief Financial Officer Alan Waites at (785) 460-5402 or Nick Wells, Foundation Director, at (785) 460-4684.

*Based on taxable income above \$33,950 (single) or \$67,900 (married). Filing jointly (both have a "marginal tax rate" of 25%). Tax savings could be greater based on higher taxable income, thereby lowering the overall net cash flow for a contribution.

COLBY COMMUNITY COLLEGE
 1255 S Range • Colby, KS 67701-4099