

State seeks input on bus service

An online survey being done by the Kansas Department of Transportation asks citizens about the existing and possible future intercity bus system needs in the state.

Intercity buses carry passengers over long distances with generally only one stop location per city. Currently, intercity buses operate 24 hours a day within Kansas and cover 1,400 route-miles with stops in 21 cities across the state.

Currently the only bus to stop in Northwest Kansas is Greyhound that has a meal stop in Colby traveling on I-70. Presently the closest place to buy a ticket and board a Greyhound bus is Hays. The bus stops in Colby for breakfast at 6:20 a.m. Central Time for those traveling to Denver. For the return trip the bus stops in Colby at 8 p.m. Central Time.

“Information from this survey will help identify where changes can be made to provide the best intercity bus service possible,” said Stephanie Watts, KDOT Transportation Planner.

The survey is part of a study to gather data, identify needs and develop ways to improve intercity bus service in Kansas. The state transportation department is responsible for issuing federal subsidies for intercity bus service.

To participate in the survey, go to KDOT’s website, www.ksdot.org and click on the KDOT Intercity Bus Study logo on the right.

Assistance program sign-up opens soon

Northwest Kansas farmers and ranchers who had crop losses of at least 10 percent on their 2010 season will be eligible to apply for a U.S. Department of Agriculture supplemental payment program beginning this month.

Signup for the Supplemental Revenue Assistance Payments program begins Monday, Nov. 14, said Dennis R. Mote, Sherman County Executive Director of USDA’s Farm Service Agency.

“Many Sherman County producers experienced natural disasters during the 2010 crop year that caused hardship and financial losses to many agricultural operations,” said Mote. “The Supplemental Revenue program provides assistance to producers when disaster strikes. I strongly encourage producers with 2010 crop losses to contact the local Farm Service office to learn more about the program.”

The following Northwest Kansas counties received a primary or contiguous disaster designation during 2010: Cheyenne, Decatur, Gove, Greeley, Logan, Rawlins, Sheridan, Sherman, Thomas, Wallace and Wichita.

To qualify for a Supplemental Revenue payment, the producer’s operation must be located in a primary or contiguous county that was declared a disaster for 2010 and have at least a 10 percent production loss that affects one crop of economic significance. Producers with agricultural operations located outside a disaster county are eligible for Supplemental benefits if they had a production loss greater or equal to 50 percent of the normal production on the farm.

For crops of economic significance, producers must have obtained a policy or plan of insurance for all insurable crops through the Federal Crop Insurance Corporation and obtained Noninsured Crop Disaster Assistance Program coverage on non-insurable crops, if available.

Eligible farmers and ranchers who meet the definition of a socially disadvantaged, limited resource or beginning farmer or rancher do not have to meet this requirement. Forage crops intended for grazing are not eligible for Supplemental benefits.

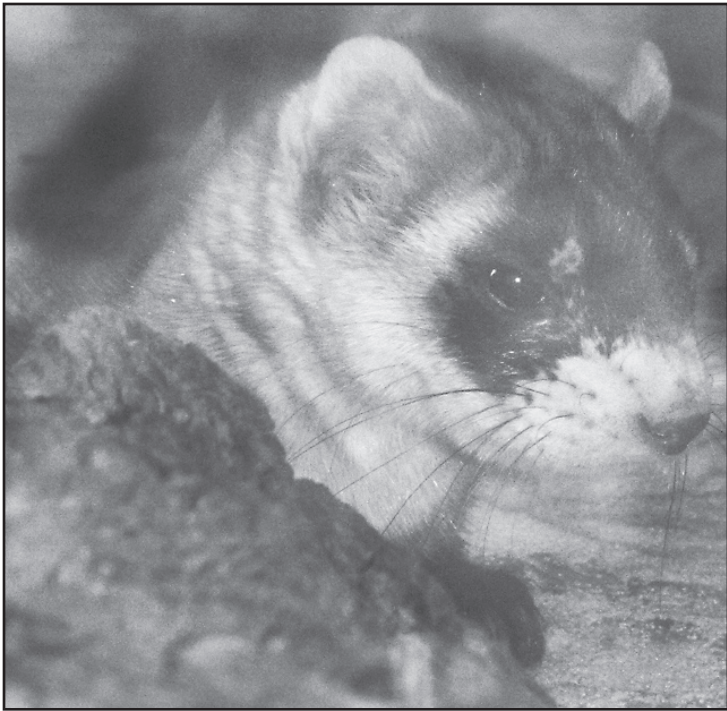
For more information on Supplemental Revenue program eligibility requirements contact the Sherman County Farm Service Agency at (785) 899-3070, or visit the website at <http://www.fsa.usda.gov/sure>.



Ferret Fest fun

The wind was strong Saturday, but it did not stop the Ferret Fest at the Tim Peterson farm west of Monument. The Cheyenne Mountain Zoo brought two prairie dogs, a corn snake, descended skunk and, of course, a black-footed ferret. Ann Zimmerman wrote and performed a brand new song about the black-footed ferret. Peterson said 87 people attended, and more than half traveled 100 miles to attend this event.

Photos by Tom Betz
The Goodland Star-News



High school presents Phantom of the Opera

PHANTOM, from Page 1

Set Construction Deanne Langness.

Choreography Chloe Goodwin
The Orchestra

Keyboard I Emily Klemm, Keyboard II Carol Jolly, Reed I Birkley Barnes, Reed II Brenda Linin, Bass Clarinet Pat Schiefen, Trumpet Brendan Fulcher, Trombone I Jacob Schnabel, Trombone II Michael Pettibone, Bass Jay Jolly and Percussion Tyler Jones.

Crews

Stage Crew Gordon Pettibone, Dr. Nancy McFarland, Matt Murray, Salum Lopez, Silem Lopez, Rachel Hageman and Selena Acosta. Lights J.J. Farris.

Spot Lights Levi Klemm and Kyler Amthor.

Phantom Boat Construction Jeff First, Brian Coon and Science Olympiad Students.

Make up Traci Price-Waugh, Jeff First, Trace Waugh, Jordan Knitig, Nicole Partridge, Ayin Martinez and Emily Klemm.

Program Printing Kimmi’s Kopy

Shop & Design.

Ticket Printing and Organizing Tanya Szanto and Deb Winter.

Backstage Tina Goodwin and Janet Redlin.

Tickets Shelley Brown, Laurie Klemm and Denise Floyd

Chandelier Design & Production Rochelle and Brian Kling.

Advertising Autumn Hellerud.

Costumes Shelley Brown, Tina Goodwin, Nancy Fugleberg, Mary Redlin, Taylor Thomas, Carlee Cooper and Laramie Farris.

Crossword Puzzle

1	2	3		4	5	6		7	8	9
10			11	12			13		14	
15				16					17	
	18			19				20		
				21			22			
	23	24					25		26	27
28								29		30
31									32	
33			34						35	
	36			37	38			39	40	
			41		42		43			
44	45	46				47			48	49
50					51				52	53
54					55				56	
57						58				59

CLUES ACROSS

- Not divisible by two
- Of she
- Gas usage measurement
- 2008 Pulitzer poet Robert
- Rich persons
- Semitic fertility god
- Tropical Asian starlings
- Digression
- An enticement
- “Nutcracker” character
- Swindles
- Capital of ancient China
- 221-206 BC
- Small out buildings
- __ and Venzetti
- Data transmission speed measure
- Daminozide
- A high Swiss mountain
- No. Am. republic
- Golf ball pegs
- Any unwanted plant
- Monarchs of Iran
- Get together
- Delightfully pretty
- Am. & Australian physician’s groups
- Greatest A. Lexicographer
- A fencing sword
- Relating to imides
- University in N. Carolina
- Fish of the genus Alosa
- Force units
- Similar in kind
- Possessed
- Distress signal
- Grab

CLUES DOWN

- Physicist Georg Simon**
- A raised platform
- Celtic mother of the faeries
- Fasteners secured by a pin
- Quality of being morally wrong
- Rabbit __, Updike novel
- Hawaiian island
- Young salmon
- Clay soil layer
- Drooped
- Lampshade supports
- Slang for trucks with trailers
- White (Spanish)
- Furnish with help
- Supervises flying
- Trade
- Wuhan is the capital (var. sp.)
- Hints
- Green regions of desert
- Baseball striker
- Radioactivity unit
- Regarded with reverence
- Carelessly expends
- A Chinese Moslem
- Of a steady character
- Early Christian pulpits
- More (Spanish)
- Television awards
- Yellow-fever mosquitos
- Openwork fabric
- 10 = one kor
- Comprehend the written word
- Slang for a drunk
- Ardour
- An Italian’s capital
- The beak of a bird

The crossword puzzle brought to you by:

The
Goodland Star-News

1205 Main, Goodland, Kan. 67735
(785) 899-2338

FUN BY THE NUMBERS

				1			5	
	8	3						
			7	2	4			8
2		6	9	3				
1							7	
			1					5
5					6			2
	3		4	7		9		1

Level: Intermediate

Like puzzles? Then you’ll love sudoku. This mind-bending puzzle will have you hooked from the moment you square off, so sharpen your pencil and put your sudoku savvy to the test!

Here’s How It Works:

Sudoku puzzles are formatted as a 9x9 grid, broken down into nine 3x3 boxes. To solve a sudoku, the numbers 1 through 9 must fill each row, column and box. Each number can appear only once in each row, column and box. You can figure out the order in which the numbers will appear by using the numeric clues already provided in the boxes. The more numbers you name, the easier it gets to solve the puzzle!

a word to the wise

you can learn a lot from the Newspaper!

Encourage your children to make reading the newspaper a part of their everyday routine for lifelong learning. Newspapers are living textbooks, helping students develop reading, math, social studies and language skills while exploring the issues affecting our world today.

The Goodland Star-News

1205 Main Ave., Goodland, KS 67735 • (785) 899-2338