

weather report



83°

10:30 a.m.
Monday

Today

Sunset, 8:11 p.m.
Wednesday
Sunrise, 5:20 a.m.
Sunset, 8:11 p.m.

Midday Conditions

- Soil temperature 70 degrees
- Humidity 41 percent
- Sky mostly sunny
- Winds east 15-20 mph
- Barometer 30.07 inches and falling
- Record High today 98° (1956)
- Record Low today 36° (1998)

Last 24 Hours*

High Sunday	93°
Low Sunday	56°
Precipitation	trace
This month	0.29
Year to date	4.71
Below normal	2.10 inches

The Topside Forecast

Today: Mostly sunny with a 20 percent chance of showers and thunderstorms after 3 p.m., a high near 88, winds breezy out of the south at 10 to 30mph and a low around 62. Wednesday: Partly sunny with a 20 percent chance of showers and thunderstorms after noon, a high near 91 and a low around 60.

Extended Forecast

Thursday: Mostly sunny and breezy with a 20 percent chance of showers and thunderstorms, a high near 85 and a low around 63. Friday: Mostly sunny with a 20 percent chance of showers.
(National Weather Service)

local markets



10:30 a.m.

Wheat — \$5.99 bushel
Posted county price — \$5.92
Corn — \$5.58 bushel
Posted county price — \$5.67
Milo — \$5.23 bushel
Soybeans — \$12.09 bushel
Posted county price — \$12.78
Millet — \$12 hundredweight
Sunflowers
Oil current crop — \$24.85 cwt.
Confection — no bid
Pinto beans — \$28
(Markets by Scoular Grain, Sun Opta, Frontier Ag and 21st Century Bean. These may not be closing figures.)

inside today

More local news, views from your Goodland Star-News



Golf tourney benefits camp

A golf tournament was held on Saturday at Sugar Hills Golf Course, with proceeds from the tournament as well as a silent auction going to the wrestling camp.

See Page 10



Area wheat crop in rough shape

By Kevin Bottrell

kbottrell@nwkansan.com

While farmers have pulled in good wheat crops over the past several years, things are not looking good for the 2012 harvest.

Jeannie Falk, a K-State agronomist whose territory includes Sherman County, said wheat farming in northwest Kansas has been getting tougher by the day.

The lack of moisture and hot, dry winds has caused the wheat to mature faster.

"It pushes it through the maturity process," she said. "Any stress will make it want to develop the berries faster."

The High Plains Drought Moni-

tor, a project of the University of Nebraska, lists Sherman County and most of northwest Kansas as "Abnormally Dry," meaning it is not quite under drought conditions. A north-south band from Norton to Garden City — including parts of Decatur, Sheridan, Graham and Gove counties, is listed as under a moderate drought.

The crop started off well, she said, with a mild winter and rains early in the growing season, but the wheat could have used some moisture about three weeks ago. Some areas have caught more rain than others. Wheat in Wallace County has had a particularly difficult time, she said. Wallace County was also dry

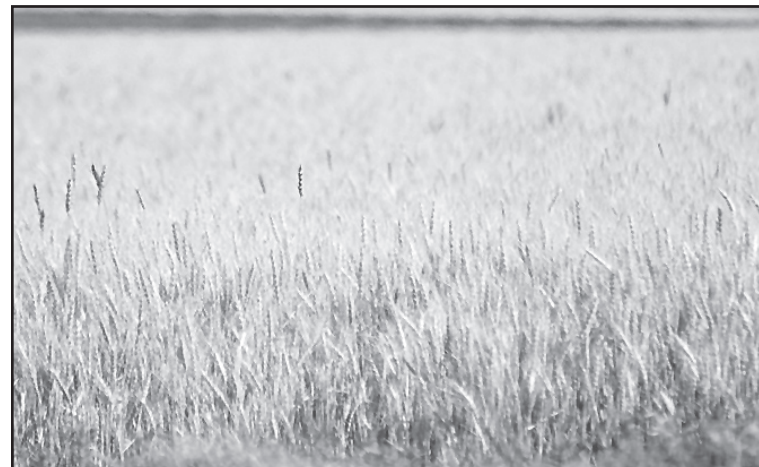
last year.

Beyond just heat, high winds are also a danger, because they can shatter the heads.

"The time we don't want to have wind is when the berries are mature," she said. "That can cause shattering, when the wheat kernel drops to the ground."

The windstorm that hit the area in late May didn't cause much shattering, she said, because the berries weren't fully mature yet. However, blowing dust off neighboring fields can cause the wheat to lie down. The area saw more 60 mph wind on Saturday, when a fast-moving

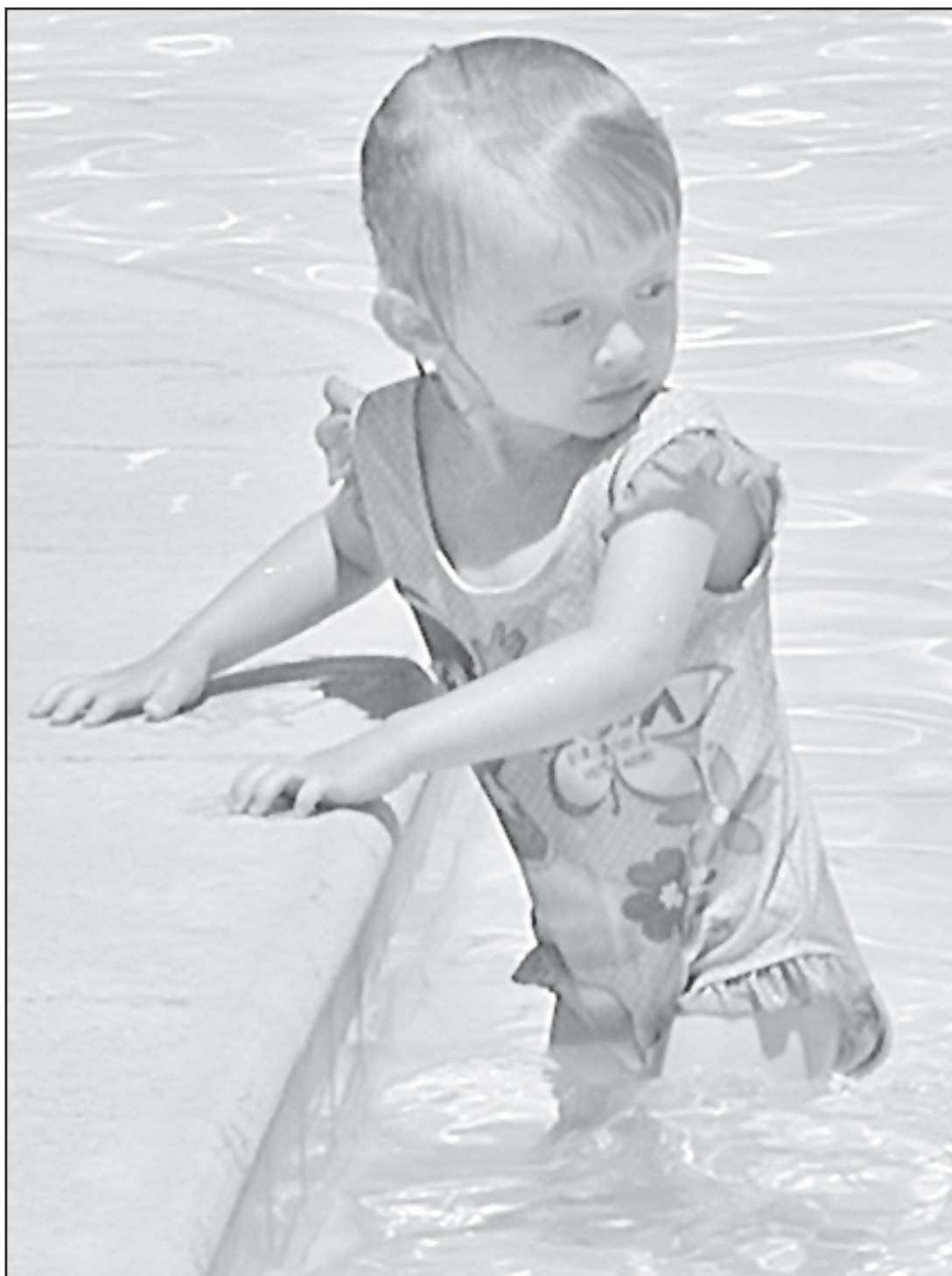
See WHEAT, Page 5



This wheat field is nearing the stage where it can be harvested, a week or two ahead of the normal schedule.

Photo by Kevin Bottrell/The Goodland Star-News

Perfect pool weather



On a hot sunny Sunday afternoon a little girl was enjoying the shallow end of the pool at Steever Water Park. Her mother was nearby. The pool opened on Memorial Day.

Photo by Pat Schiefen/The Goodland Star-News

County has final election filing list

The filing deadline to run for county office in the 2012 Primary Election has come and gone and the final list of candidates has been released. The actual date of the primary is still up in the air, while the U.S. District Court considers the redistricting issue.

The deadline to file for state office, such as Kansas Senator, Representative or U.S. Representative, is at noon, June 11.

Running for county commissioner from District Two are Lowell Coon, Paul Flanders and Ken Klemm.

Running for District Three commissioner are Larry E. Witt and Steve Evert.

Several incumbents — including some who were appointed to fill vacancies — have filed, including Brock Abbey for county attorney, Janet Rumpel for county clerk, April Hall for county treasurer and Billie Hoyt for register of deeds.

Burton Pianalto and incumbent Kevin Butts have filed to run for county sheriff.

Joyce Purvis has filed for McPherson Township trustee and Carolyn Paul has filed for McPherson Township treasurer.

Numerous people have filed for precinct seats on the Republican Committee.

Ward One committeeman: Michael Bretz and Jeffery Mason. Ward One committeewoman: Roberta Bretz, Jeanette Ruddell and Lois Cossman.

Ward Two committeeman: Chad DeJong. Ward Two committeewoman: Lisa DeJong.

Ward Three committeeman: Travis Witman. Ward Three committeewoman: Dawn Jolly.

Ward Four committeeman: J. Ronald Vignery and Kendall Ray Gittinger. Ward Four committe-

woman, Judith A. Vignery and Rosanne M. Koggie.

Grant Township committeeman: William Q. Gattshall. Grant Township committeewoman: Diane L. Gattshall.

Iowa Township committeeman: Warren R. Sweat. Iowa Township committeewoman: Carol G. Sweat.

Itasca Township committeeman: Harlan D. House. Itasca Township committeewoman: Cora A. House.

Lincoln Township committeeman: Ben Duell.

Llanos Township committeeman: Ron Schilling and Todd Quenzer. Llanos Township committeewoman: Marsha Schilling and Bronwyn Quenzer.

Logan Township committeeman: John Topliff, Dennis Bentzinger and Joe Scheopner. Logan Township committeewoman: Carol Jean Topliff, Dorothy L. Bentzinger and Iris Scheopner.

McPherson Township committeeman: Elmer R. Purvis. McPherson Township committeewoman: Joyce S. Purvis.

Smoky Township committeeman: Erick Bergquist. Smoky Township committeewoman: Connie R. Bergquist.

Stateline Township committeeman: Gary Winter and Scott Hooker. Stateline Township committeewoman: Karen Sue Hooker.

Union Township committeeman: Allen Quenzer. Union Township committeewoman: Doris Quenzer.

Voltaire Township committeeman: David B. Schields. Voltaire Township committeewoman: Betty Jean Schields.

Washington Township committeeman: Leonard J. Owens Jr. Washington Township committeewoman: Sondra Owens.

Norcatuar rabies case confirmed by county

By Carleen Bell

cbell@nwkansan.com

Following a positive test on a cat, the Decatur County Health Department has confirmed a case of rabies in the city of Norcatuar.

Marilyn Gamblin, Decatur County health officer, reported this week that her department received a report on May 18 of a cat that was potentially rabid. The cat was euthanized and tested for infection. The infection was confirmed on May 22.

The cat belonged to a Norcatuar family and because of potential exposure, the family is going through the preventative vaccination.

Gamblin explained that when a case of rabies is discovered, health officials evaluate whether the animal has potentially exposed humans or other animals to the virus. Because of potential exposure, the family dog and several other cats were also euthanized.

Because there is no test for rabies before symptoms appear, Gamblin said, the preventative vaccine is a series of five shots over two weeks for people who may be exposed.

According to information from Kansas State University Rabies laboratory, the Norcatuar case is the first of 2012 in Decatur County and the 27th case in Kansas for the year.

The Rabies Laboratory offers these tips to prevent rabies:

- Have your veterinarian vaccinate all dogs, cats, ferrets, horses, and valuable livestock against rabies.
- If bitten by an animal, seek medical attention and report the bite to your local public health department or animal control department immediately.
- If your animal is bitten, contact your veterinarian for an appointment for the animal to be examined.
- Do not handle, or feed wild animals. Never adopt wild animals or bring them into your home.
- If wild animals appear sick or injured, call animal control or an animal rescue agency for assistance.
- Teach children never to handle unfamiliar animals, wild or domestic, even if they appear friendly.

Sheriff's Office constructs new Mobile Command Center

Law Enforcement agencies in the Sherman County area now have a new resource for emergency situations.

The Sherman County Sheriff's Office has acquired a Mobile Command Center, essentially a large van, which was developed to provide a place for emergency supervisors to coordinate and direct operations.

The command center has several benches and a table that serve as a meeting area. It also includes various boards and other equipment that help supervisors keep track of personnel and resources. In addition, it is equipped with a communications console that can work with several different radio systems. The command center is also equipped with a generator in order to power all of its equipment when no power source is available.

Sheriff Kevin Butts said the vehicle was acquired after a recent bomb threat at the Goodland High School. In that incident, several different agencies responded to



The Sherman County Sheriff's Office has refurbished this surplus military vehicle into a new mobile command center that can provide a safe area on-scene where officers can coordinate emergency response. Photo by Kevin Bottrell/The Goodland Star-News

handle the incident, including school personnel, police officers, sheriff's deputies, and fire fighters as well as bomb detecting canine teams from the Kansas Highway Patrol.

"The enormous amount of coordination required for this type of operation made it apparent that emergency responders needed

See SHERIFF, Page 5