

# New plant hardiness zone map shows change

The recent revision of the U.S. Department of Agriculture's Plant Hardiness Zone Map provides tangible evidence that winter temperatures have been warming in Kansas since 1990, said Chuck Rice, K-State university distinguished professor of agronomy.

The new map shows that most areas of Kansas can now expect the extreme low temperature in the winter to be about 5 degrees warmer than 20 years ago, on the average, Rice said.

This warming trend has already resulted in changes to potential landscape plant selections, for example, based on the change in plant hardiness zones. More changes may be coming due to continued climate change, Rice said.

"The latest climate change projections from computer models show that Kansas can be expected

to get increasingly warmer, with higher low temperatures, especially in the winter. The eastern half of Kansas is projected to get somewhat wetter, while the western half of the state will likely become drier," Rice said.

To help Kansas residents adapt to and mitigate climate change, scientists at K-State have partnered with scientists at the University of Kansas, Wichita State University and the University of Nebraska on two major projects funded by the National Science Foundation.

One project consists of more than 60 Kansas scientists who are collaborating on the Climate Change and Renewable Energy initiative, a massive research endeavor that has the potential to significantly affect the Kansas economy. The research will provide a better understanding of how climate might further change

in Kansas and develop strategies for adaptation and mitigation.

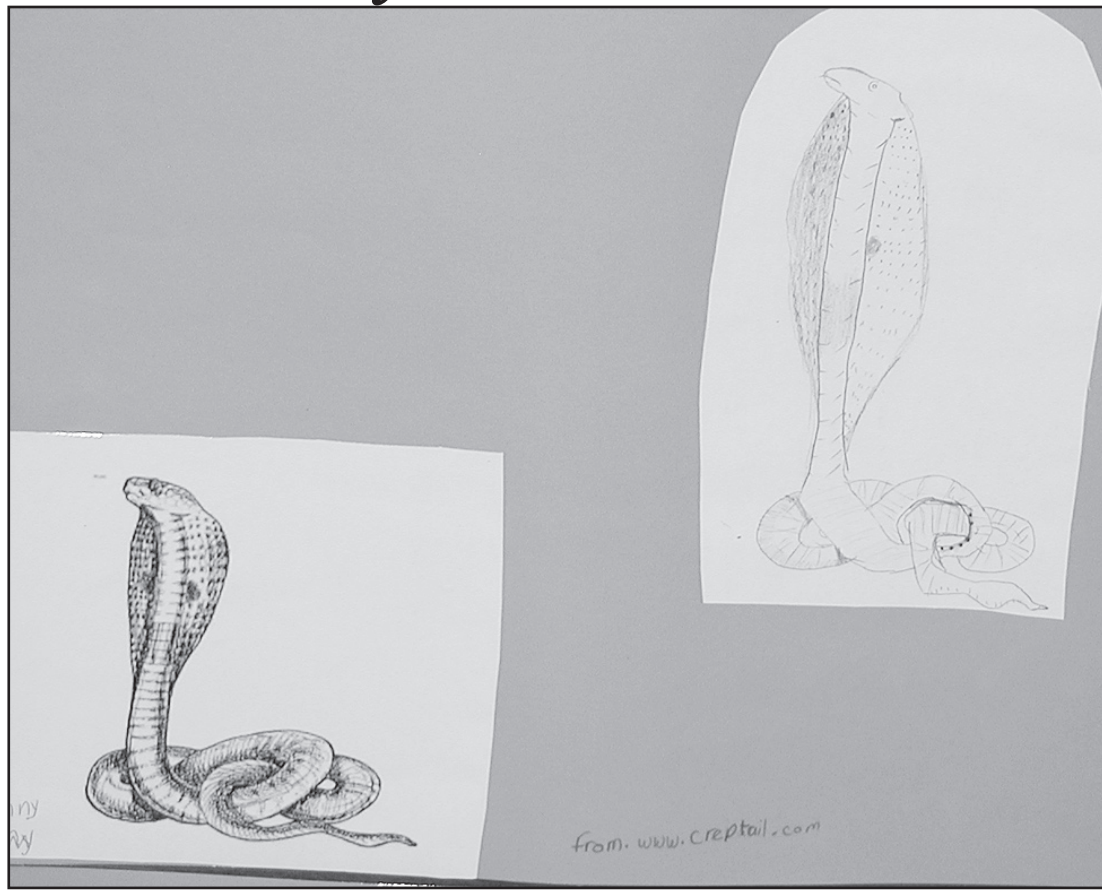
The other project, the Central Great Plains Climate Change Education Project is to help provide the public with a better understanding of climate change.

Kansas State University scientists are playing key roles in both projects, Rice said.

"Our goal is to prepare Kansas and others in this region of the country for the kind of changes in climate projected for the future, as evidenced by the recent change in the USDA's plant hardiness zone map," the K-State scientist explained.

For information on these projects, see [www.ksu.edu/climate](http://www.ksu.edu/climate) and [www.ksu.edu/cgp-ccep/](http://www.ksu.edu/cgp-ccep/), or contact Chuck Rice at (785) 532-7217 or [cwrice@ksu.edu](mailto:cwrice@ksu.edu).

## Elementary art



Another of the pieces of art shown at the Carnegie Arts Center until Sunday featuring work done by elementary students from the Goodland School District.

Photo by Pat Schiefen/The Goodland Star-News

# Cattlemen's day set for Thursday at Manhattan

Kansas State University will hold its 99th Annual Cattlemen's Day on Friday, March 2, on the university's Manhattan campus. The day kicks off at 8 a.m. in Weber Hall with a commercial trade show, educational exhibits and sponsored morning refreshments, with the program beginning at 10 a.m.

Featured presentations during the morning session include market outlook for the cattle industry, demand for choice and prime beef and dealing with declining inventories amid excess feeding and packing

capacity.

After a sponsored lunch, breakout sessions are scheduled at 1:15 and 2 p.m.

Information and online registration is available at [www.asi.ksu.edu/cattlemensday](http://www.asi.ksu.edu/cattlemensday) or by contacting Eve Clark at (785) 532-1280 or [evcec@ksu.edu](mailto:evcec@ksu.edu). The cost to register if paid by Friday is \$20 per person; after that date and at the door is \$30. There is no charge for students.

The event will be followed by K-State's 35th Annual Legacy Sale at 3:30 p.m. in the university's pure-

bred beef teaching center, offering bulls, show heifer prospects, bred females and six registered quarter horses. More sale information is available at [asi.ksu.edu/bullsale](http://asi.ksu.edu/bullsale) or contact Ryan Breiner at (785) 532-6127.

The annual stockmen's dinner will be held at the Clarion Hotel, honoring the Mushrush Family as Stockmen of the Year. Information is available online at [www.found.ksu.edu/lmic](http://www.found.ksu.edu/lmic) or by calling Melissa Geisler at (785) 532-7522.

# Class offered for grandparents in supporting new parents

Grandparents and anyone interested in supporting young parents of infants are invited to attend a class covering important issues related to supporting new parents and infants.

The class will be held at the Citizens Medical Center Conference Room on Tuesday. A light meal will be served from 5 to 4:30

p.m. (Mountain Time) followed by the program from 4:30-6:30 p.m. (Mountain Time). The program is free but participants must register. For more information or to register, contact Smart Start at (785) 465-9103.

Kathy Ryan, RN, CLC from Thomas County Health Department will discuss, "Supporting the

Breastfeeding Family." Maureen Ostmeier, Smart Start NW Kansas project director and Paige Campbell, Prevention of Child Abuse and Neglect Program director will then cover topics for "Supporting New Parents and Infants: Brain Development;" "5 Protective Factors for a Family;" "Period of Purple Crying;" and "Happiest Baby."

# Corn Update to be held Monday

The Corn Update, a jointly-sponsored by K-State Sunflower District and Sherman County Farm Bureau, will be held Monday at the Sherman County 4-H Building in Goodland. The program will run from 11 a.m.

to 3 p.m. (Mountain Time). Topics are drought tolerant corn, vertical tillage, glyphosate application timing and corn nematodes. Speakers include John Murray with Pioneer and Kraig Roozeboom and DeAnn

Presley with K-State Agronomy. Please RSVP to the K-State Sunflower District Office in Goodland at (785) 890-4880 or via email at [jfalk@k-state.edu](mailto:jfalk@k-state.edu) by today. Ten reservations are needed.

# Sheep and goat conference planned for May at school

The Kansas State University Sheep and Goat Conference and trade show is slated for Friday through Sunday, May 4 to 6, in Manhattan, with a registration deadline of April 15.

The program will be held at K-State's Weber Hall and its newly completed Sheep and Meat Goat Center.

"This is going to be an outstanding conference, consisting of talks related to selection, health, nutrition, management, reproduction, carcass quality, marketing, guardian animals, hand-spinning and dairy goat production," said Brian Faris, sheep and goat specialist with K-

State Research and Extension.

Speakers will include nationally-recognized extension specialists, veterinarians and producers, including Kreg Leymaster, Frank Craddock, Preston Faris, Dan Hale, Shelie Laflin, Justin Luther, Justin Waggoner, Bob Buchholz, Steve Burton, Noah Goddard, Bryce Gerlach and Faris.

Parts of the conference will be divided by specie, allowing attendees to gain information specific to the sheep or goats they raise, Faris said.

The trade show will showcase products and services related to nutrition, health, fencing, and other

topics important to producers.

Participants will have the opportunity to sample lamb and chevon products, as well as enjoy ice cream produced in K-State's Call Hall for dessert.

Speaker information, a conference schedule, registration and vendor forms, as well as lodging information are available on the web at [www.ksusheepandgoats.org](http://www.ksusheepandgoats.org). Questions also may be directed to Brian Faris at (785) 532-1255 or [brfaris@ksu.edu](mailto:brfaris@ksu.edu) or Lois Schreiner at (785) 532-1267 or [lschrein@ksu.edu](mailto:lschrein@ksu.edu).

# Family found ok

On Monday, people who have Facebook accounts were alerted that Vicky Zwegardt and her two children were missing.

The Saint Francis Herald staff contacted the the family and sheriff's deputy only to learn that they hadn't been seen in some time but, they didn't know what had happened.

On Tuesday, Cody Beeson, St. Francis deputy sheriff, called to tell The Saint Francis Herald staff that Vicky Zwegardt and her two children had been found. KBI officers had spoken with her and each of the children to verify the fact that they were OK.

No other information was released with the call.

## corrections

The Goodland Star-News will correct any mistake or misunderstanding in a news story.

Please call our office at (785) 899-2338 to report errors.

We believe that news should be fair and factual.

We want to keep an accurate record and appreciate you calling to our attention any failure to live up to this standard.

**RICHARDSON'S HOMESTEAD REALTY AND AUCTION**

**Annual Spring Consignment Auction**

**Saturday, MARCH 24 at the Homestead Auction Lot**

To advertise on sale bill items need to be consigned by March 1st. Several items already listed.

Contact Terry Richardson at 785-899-8094 cell or 899-2328 office.

Homestead Realty & Auction, 1023 Main, Goodland.

**TERRY RICHARDSON**  
OWNER/BROKER/AUCTIONEER  
[auctions@goodlandhomestead.com](mailto:auctions@goodlandhomestead.com)  
785-899-2328 or 800-974-2426  
[www.goodlandhomestead.com](http://www.goodlandhomestead.com)

**The Goodland Star-News Ad Deadlines**

For Tuesday papers  
Friday Noon

For Friday papers  
Wednesday Noon

For Country Advocate  
Friday Noon

You may call the ad in to (785) 899-2338 or stop by the Star-News at 1205 Main.

PEOPLE WHO READ NEWSPAPERS ARE

**BETTER SCHOOL BOARD MEMBERS**

It all starts with Newspapers

**Cash 4 Junkers**

Will pay top dollar for your unwanted, totaled or junked vehicles. Cars, vans, pickups or trucks. Also interested in farm machinery and other metals, batteries, radiators, copper aluminum & brass.

Call 785-332-7046, Jett Fromholtz  
St. Francis, Ks.

**DIGITAL CINEMA IS HERE! ENJOY A MOVIE!**

**February 24-March 1**

**Journey 2 3d (PG)**

PG: Some adventure action and brief mild language.

[www.goodlandnet.com/movies](http://www.goodlandnet.com/movies)

Nightly 7 PM  
Sunday Matinee 1:30 PM  
Movie bucks make great gifts!

**Sherman**  
1203 Main - Phone 899-6103

**Grand Reopening**

**Saturday, February 25**  
**10 a.m. to noon**

• Big Mac Extra Value Meal and Southern Style Chicken Extra Value Meal are only \$3.99 until March 10th!

• 1.99 smoothies • 49¢ ice cream cones

Enter the drawing for 2 \$50 Arch Cards, a boys bike and a girls bike!

**McDonald's**

2325 Enterprise Rd., Goodland • (785) 899-7371

**Patient Support Programs at Goodland Regional Medical Center**

**Tuesday, Feb. 28—Diabetes 101: Session 1—4-5 p.m. MST**  
Type I & Type II will be defined, similarities and differences between the two types discussed along with treatment strategies and demonstration of techniques for checking blood glucose & keeping records. Presented by KUMC Center for Telemedicine & Telehealth.

**Wednesday, Feb. 29—Zebras Don't Get Ulcers; Why Do We? - 2-3 p.m. MST**  
Stress can often feel like riding an emotional roller coaster. This cutting-edge program shares current research in area of stress, role stress plays on physical well-being & practical, resilient ways to manager it. Presented by Turning Points.

**Wednesday, March 28—Jin Shin Jyutsu—Building the Immune System—2-3 p.m. MST**  
Jin Shin Jyutsu, the ancient art of balancing life energy in the body can help strengthen the immune system. Presented by Turning Points.

**All programs are free**

**Meet in the Large Boardroom**  
220 W. 2nd  
Goodland KS 67735  
See more information on our website:  
[www.goodlandregional.com](http://www.goodlandregional.com)

**Goodland Regional Medical Center**

**WE'RE ALL EARS!**

Questions? Comments? Story Ideas?

Your opinion is something we always want to hear. Call us today and share with us how we are doing!

**The Goodland Star-News**  
1205 Main, Goodland, KS 67735  
(785) 899-2338 (phone)