

Daylight Saving Time



It's time once again to Spring Ahead with Daylight Saving Time. At 2 a.m. Sunday morning, set your clocks ahead one hour.

Daylight Saving Time runs from the second Sunday in March to the first Sunday in November each year. Though the dates have shifted, Daylight Saving Time first became law in 1918.

weather report

44°
10 a.m.

Thursday

Today

• Sunset, 5:47 p.m.

Saturday

• Sunrise, 6:07 a.m.

• Sunset, 5:48 p.m.

Midday Conditions

- Soil temperature 34 degrees
- Humidity 49 percent
- Sky partly sunny
- Winds north 12 mph
- Barometer 29.96 inches and rising
- Record High today 75° (1974)
- Record Low today -2° (1912)

Last 24 Hours*

- High Wednesday 60°
- Low Wednesday 21°
- Precipitation none
- This month 0.04
- Year to date 0.89
- Below normal 0.14 inches

The Topside Forecast

Today: Mostly cloudy then becoming sunny, a 30 percent chance of showers at night, a high near 56, winds out of the north at 5 to 15 mph switching to the southeast and a low around 38. Saturday: Cloudy with a 50 percent chance of rain during the day and a 60 percent chance of snow and blowing snow at night, a high near 49, winds out of the west at 5 to 10 mph switching to the north at 15 to 35 mph and a low around 27.

Extended Forecast

Sunday: Mostly sunny with a 30 percent chance of blowing snow and rain, a high near 36. (National Weather Service)

local markets

10 a.m.

- Wheat — \$6.80 bushel
 - Posted county price — \$6.92
 - Corn — \$6.95 bushel
 - Posted county price — \$7.21
 - Milo — \$6.50 bushel
 - Soybeans — \$13.98 bushel
 - Posted county price — \$14.33
 - Millet — no bid
 - Sunflowers
 - Oil current crop — \$23.90 cwt.
 - Confection — no bid
 - Pinto beans — \$28
- (Markets by Scouler Grain, Sun Opta, Frontier Ag and 21st Century Bean. These may not be closing figures.)

School board lays out cost of proposals

By Pat Schiefen

The Goodland Star-News

The Goodland School District put on six informational meetings for voters Monday and Tuesday at the Goodland High School Auditorium.

Superintendent Bill Biermann led the meetings, with Goodland School Board members and Nick Nemecek of Gibson Mancini Carmichael and Nelson Architects/Planners of Garden City there as well.

The meetings each began with a presentation on how the school board decided to pursue the \$14.9 million bond, the history of each of the school buildings, the proposed cost of the bond and what the district plans to use the money for.

Biermann said one of the hardest things he has had to do was explain the two different questions on the ballot about the school bond. First is the question of whether the voters will pass a school bond and the second is whether a .25 percent sales tax levied by the city would help pay for the bond. If the voters don't pass the school bond the sales tax question result won't count. He said if the bond is approved by the voters and the sales tax is voted down the board would have to fund the entire bond through property taxes.

One of the main concerns of many were how much it would raise the property taxes. Biermann said on a \$50,000 home that would amount to an increase of \$69 in their property taxes for the school a year. On a



Superintendent Bill Biermann spoke to the audience at a school facilities meeting Tuesday.

Photo by Pat Schiefen
The Goodland Star-News

\$100,000 home the increase would be \$138 per year. On \$200,000 it would be an increase of \$276 per year.

If the voters pass the bond as well as the .25 percent sales tax, then on \$50,000 home the increase in cost per year would be reduced to \$50.31. On a \$100,000 the increase would be \$100.63 and on a \$200,000 home it would be \$201.26.

On agricultural land for 160 acres or a quarter section the annual cost increase on dry land for the bond would be \$25.34 and with the sales tax \$18.48, for irrigated \$132.48 for the bond and \$96.60 with the sales tax and on grass land \$5.76 on the

See BOARD, Page 5



Funds raised for college

Some dressed up and some dressed down for the annual Northwest Tech Endowment Fund Raiser on Saturday at the Goodland Elks Lodge. The evening included live music by Annie Up as well as dinner, games and a live and silent auction. Frank Otter of Clayton won the 1980 John Deere 4440 tractor, which he allowed to be auctioned off for \$19,000 to go to the college endowment.

Photos by Sheila Smith
The Goodland Star-News



Goodland dialysis unit passes state survey

The dialysis unit at Goodland Regional Medical Center has passed its state survey, bringing it one step closer to being ready to accept a full load of patients.

The hospital was informed on Wednesday that the High Plains Regional Dialysis Service had passed the survey. The survey found no deficiencies. Goodland is the only hospital in the state to operate an independent outpatient hemodialysis service.

The next step will be waiting on the state to issue Medicare provider numbers so that the service can begin treating patients at full

capacity. That is expected to take about two weeks.

"Thanks and congratulations for the outstanding work and perseverance on the part of the project team," said Jay Jolly, the hospital's chief executive officer. "And a special thanks to the community members and organizations that support this effort from its beginning."

Plans to create a regional dialysis service in Goodland began in 2010 after the closure of the DaVita facility in Burlington. A group of concerned citizens reached out to the Goodland hospital to help fill the void that

the loss of that service would leave in this region. It then took nearly two and half years for the development of systems, policies, personnel and equipment to get the service where it is today.

The service was established, in part, through the sale of \$246,000 in Community Service Tax Credits through the Kansas Department of Commerce, which were awarded to the Northwest Kansas Area Medical Foundation. The foundation also received several individual donations including \$17,000 from Tri-State Health Assistance of Burlington and

has made the dialysis service a priority in its fund raising efforts over the past two years.

The dialysis team consists of Registered Nurse Michelle Thompson, nurse manager of the unit; Judy Snyder, dialysis technician; and Registered Nurse Mardy Jo Gustafson, dialysis nurse. Yolanda Bogaert, M.D., of Denver Nephrology, is the medical director.

A public event to celebrate the opening of the High Plains Regional Dialysis Service is planned for the near future.

New doctor introduced



Dr. Douglas Van Marel (right) and his family met with members of the public at a reception on Tuesday at Goodland Family Health Center. Van Marel was recently recruited by the hospital to practice in Goodland. Van Marel, his wife and four daughters moved

here from Spearfish, S.D. Over the course of the year, the hospital hopes to have several more new recruits as well.

Photo by Angela Bonham/The Goodland Star-News

College gets \$40,000 for biodiesel

Northwest Kansas Technical College has been awarded a \$40,000 grant to expand its biodiesel program.

The Kansas Board of Regents gave the college an Excellence in Technical Education award — which is given to programs within Kansas that demonstrate "exceptional strategies in technical education." Applications were judged based on five criteria: business and industry, students, alumni, faculty and program.

The program, which is called the Kansas Institute of Diesel Technology, is taught by Greg Unger, Ron Kaus, Oura Garrett, and Lester Cress. It is one of the largest programs at Northwest Tech, with about 50 students. The industry demand for graduates far exceeds the graduating class each year resulting in strong placement rates and high salaries.

A notable accomplishment of The Kansas Institute of Diesel Technology is recently earning National Automotive Technicians Education Foundation program accreditation, confirming the overall quality of the program. One of the main factors contributing to the strength of the program is an exemplary advisory board. Businesses support the program in various ways including cur-

See BIODIESEL, Page 5



genesis and salvation army

Genesis and Salvation Army are available year round to help those in need. Please call 785-890-2299 to speak to a volunteer.

activities

Tours of the 1907 Victorian House at 202 W. 13th are from **1 to 5 p.m. Wednesday through Monday.** Closed on Tuesday.

The **High Plains Museum**, 1717 Cherry Ave., is open from **9 a.m. to 5 p.m. Monday, Wednesday through Saturday and from 1 to 5 p.m. Sunday.** Closed Tuesdays.

The **Carnegie Arts Center** is open from **10 a.m. to 5 p.m. Tuesday through Saturday, 1 to 4 p.m. on Sunday and 1 to 6 p.m. on Monday** at 120 W. 12th. The center is always in need of hosts and hostesses on Sundays. New monthly exhibits and you are invited to visit the gift shop.

The **Goodland Public Library** is open from **10 a.m. to 8 p.m. Monday through Thursday** and from **10 a.m. to 5 p.m. Friday and Saturday.** For information call (785) 899-5461 or stop by the library.

Big Brothers/Big Sisters of Sherman County is seeking mentors and children to mentor. Call 890-3665.

The **Good Sam Family Support Council** meets at **7 p.m.** the second Thursday of every month at the Goodland Elks Lodge. Meetings are open to all interested people. For information call 890-3117 or 890-5936.

Breast Cancer Support Group meets at **5:30 p.m. the second Monday** of the month. Any woman with cancer is welcome. Call Norma at 890-6629 for more information.

The **Goodland Activities Center** has the daily activities. For information call 890-7242. Memberships options for everyone including day passes for \$5. Visit goodland-gac.com or stop by 808 Main.

Aerobics with Tena Thompkins at 5:30 a.m. on Monday, Wednesday and Fridays. **Aerobics** with Lisa Malsom at 5:30 p.m. on Monday and Wednesday. **High Impact Workouts** with Grady Bonsall at 5:30 a.m. on Tuesday and Thursday. **Taekwondo** with Wayne Luckerton Mondays and Tuesdays from 6 to 7:30 p.m. and on Thursdays from 5 to 7:30 p.m.

Weight Watchers meets at **5:30 p.m. for weigh in** and 6 p.m. for the meeting every **Tuesday** at the Harvest Evangelical Free Church, 521 E. Hwy. 24. For information call (785) 890-6423.

Goodland Alcoholics Anonymous, 1013 Center. If you drink alcohol, that's your business. If you want to stop, we can help. Call 821-3826 pr 728-7491.

Goodland Al-Anon Family Group meets at **6 p.m. on Fridays** at First Christian Church, 711 Arcade. For information call Alice or Marilyn at 890-5914 or 821-2862.

The **Incognito Group**. If alcohol has made your life unmanageable. Our group meets at 7 p.m. on Tuesday and Friday at the First Christian Church, 711 Arcade, Goodland West entrance. Talking about it is the first step. (785) 728-7022 and (785) 501-8282.

The "Freedom Today" group of **Narcotics Anonymous** meets at **8 p.m. Tuesdays, 8 p.m. Fridays and 8 p.m. on Sundays** at 1013 Center.

the calendar

calendar

Commodity Distribution for Sherman County residents will be at **1:30 p.m. on Monday** at First Christian Church, 8th and Arcade. Foods will include applesauce, corn, orange juice, mixed fruit, grapefruit juice and potatoes. To insure that this valuable service continues in our community we encourage everyone who qualifies to please attend. For information call Genesis (785) 890-2299.

Prairie Land Food sign up will be until Monday. Distribution is 1 to 2 p.m. Saturday, March 23. at Cat's TnT, 1018 Main, or at the Bernadine Johnson residence, located at 704 Walnut. For information call 899-2338, 821-1275, 890-2287, 821-1827 or 899-4278 or order online at www.prairielandfood.com. The Prairie Pak will have ground beef, split chicken breasts, lean ham steak, ground turkey, chicken breast strips, seasonal fresh fruits and vegetables. The specials are turkey pot roast, healthy choice steamers, salmon fillets, black forest ham and coconut cake.

Today and Saturday the Mothers of Preschoolers is sponsoring Sepia Splash Children's **Portraits** with vintage attire and props at the First Baptist Church, 1121 Main. For information call Sky at (785) 405-0163.

The "Apostle Peter and the Last Supper" will be shown at **1:30 p.m. on Sunday, March 24**, at the Sherman Theatre, 1203

Main. This will be the latest in the Films of Faith Film Series.

There will be a **blood drive** for the Red Cross from **8:30 a.m. to 3 p.m. on Tuesday, March 26**, at the Goodland High School, 1209 Cherry, Goodland.

AARP Tax-Aide counseling, preparation, e-filing and teaching service will help you file your 2012 Tax Return through April 15. Call (785) 890-2287 or (785) 821-1827 to make an appointment.

Tuesday Flicks are at **1:30 p.m.** at the **Goodland Public Library**, 812 Broadway. Call the library for the title of the movie at 899-5461.

senior menu

Today: Smokies, macaroni and cheese, Italian blend vegetables, bread and five cup salad. **Monday:** Tater tot casserole, harvard beets, bread and apricots.

Tuesday: Ham, sweet potatoes, cook's choice vegetable, bread and pineapple. **Wednesday:** Meat balls, au gratin potatoes, peas, bread and gelatin with mixed fruit. **Thursday:** Chicken salad sandwich, tomato soup, peaches, bread and cookie. **Friday:** Baked fish, green bean casserole, strawberries and bananas, bread and blueberry crisp.

school menu

Today: No school. Teacher professional day. **Monday:** Breakfast - oatmeal breakfast round, banana and milk. Lunch - chicken tetrazzini, tossed salad, steamed

carrots, whole grain breadstick, fresh fruit and milk. **Tuesday:** Breakfast - whole grain waffles, sausage, mandarin oranges and milk. Lunch - pork rib on a bun with lettuce and tomato, tri-tater, green beans, fresh fruit, cherry crisp and milk. **Wednesday:** Breakfast - breakfast sundae, raisins, juice and milk. Lunch - lasagna, spinach salad, whole grain garlic bread, fresh fruit and milk. **Thursday:** Breakfast - whole grain cheese pizza, fresh mixed fruit cup and milk. Lunch - baked chicken drumstick, savory rice, fresh broccoli, corn, oatmeal roll, sliced peaches and milk. **Friday:** No school parent and teachers conferences. **Monday through Friday:** No school spring break.

school calendar

Today: No school. Teacher professional day. Sunday: Daylight Savings Time begins. **Monday:** Goodland High School spring sports pictures. 7 p.m. board of education meeting. **Tuesday:** 5:30 p.m. first grade music program in the high school auditorium. **Wednesday:** 7:30 a.m. professional learning communities. 4 p.m. Central Site Council. **Thursday:** 4 to 8 p.m. Parent/teacher conferences. 3 p.m. varsity softball against Hays in Goodland. **Friday:** No school. 8 a.m. to noon parent/teacher conferences. 3 p.m. varsity baseball against Burlington at Memorial Field. **Monday through Friday:** No school spring break.

services

Barbara Lee Ornelas

The memorial service for Barbara Lee Ornelas, 54, Goodland resident, have been rescheduled for 10 a.m. on Monday, March 11, 2013, at Koons Chapel, 211 N. Main, Goodland. She died on Monday,

Feb. 4, 2013, at the Select Specialty Hospital in Omaha, Neb. The service was originally scheduled for Wednesday, Feb. 20, 2013, and was canceled due to weather.

KOONS FUNERAL HOME, INC
AND MONUMENTS
www.koonsfuneralhome.com

birth

Chloe Autumn Pope

Chloe Autumn Pope was born Tuesday, Feb. 5, 2013, at Citizens Medical Center in Colby. She weighed 8 pounds, 1 ounce and was 21 inches long.

Tara Pope of Hoxie and her grandparents are Lynn and Kathy Fulwider of Brewster and Russ and Linda Pope of Hoxie.

Her parents are Christopher and

A brother Corbin Pope welcomed her home.

Woman retired after 26 years



Shirley Barnhart

Shirley Barnhart, a 26-year employee of the Kansas Highway Patrol at the Kanorado scale house, retired on Dec. 7, 2012.

She started as a Motor Carrier Inspector I under the Department of Revenue on Dec. 18, 1986. On Feb. 18, 1988, she was promoted to a full-time position. In June 1988, the motor carrier inspectors were transferred to the Kansas Highway Patrol. On March 7, 1999, Barnhart was promoted to Motor Carrier Inspector II, the position she was in when she retired.

Deadline approaching for governor's interns

The deadline for college juniors, seniors, graduate and law students to apply for the Kansas Governor's Internship Program is fast approaching. Students have until Friday, to submit their applications for the summer internship program.

Commission, Corrections, Juvenile Justice Authority, Children and Families, Wildlife, Parks and Tourism, Health and Environment and the Kansas Department of Education.

The program is designed to give students hands-on experience of working in state government and allow students the opportunity to contribute to improving the State of Kansas.

The summer internship program runs from May to August, and students are expected to work 30 hours per week. Some internships may be paid. All interested students must submit an internship application from the governor's website, along with a current resume, signed consent form, two letters of recommendation, a statement of interest and an optional writing sample.

Internship specialization opportunities in the governor's office include positions in appointments, communications, constituent services, legal and other areas.

Completed applications are due by Friday applications received after this date will be reviewed on a case-by-case basis. Information about the program can be found at governor.ks.gov/serving-kansans/governor's-office-internship-program.

Each cabinet-level agency also offers opportunities for interns, these include: Labor, Commerce, Revenue, Transportation, Agriculture, Adjutant General, Aging and Disability Services, Highway Patrol, Administration, Securities

Call 890-8369.

Bird City Alcoholics Anonymous group meets at **6:30 p.m. (Mountain Time) on Fridays** at the Senior Center on 4th Street. **Narcotics Anonymous** meets at **6:30 (Mountain Time) on Tuesdays** at the Senior Center. Call (785) 734-2734 for more information.

Stratton "AA by the Book" Alcoholics Anonymous group meets at **7 p.m. Thursdays** for a beginners open meeting. Filices and young people welcome. Call (719) 348-5398 for men and (719) 346-8553 for women. On U.S. Highway 24 go to Statton and it is the second house on the left, 513 Iola Street.

Fibromyalgia and Chronic Myofascial Pain Support Group meets from **6:30 to 8:30 p.m. the third Wednesday** of every month in the Emergency Medical Services building, 257 15th St., in Burlington. Call Debbie at 719-346-4612.

area events

Prairie Museum of Art and History, 1905 S. Franklin, Colby is open from 9 a.m. to 5 p.m. Central Time Tuesday through Friday and 1 to 5 p.m. Saturday and Sunday.

thrift store

The Goodland Churches Thrift Shop, 1002 Main, is open from 10 a.m. to 5 p.m. on Monday through Friday. Donations welcome. For information call 890-2007.

health department

The Sherman County Health Department at 1622 Broadway is open from 8 a.m. to noon and 1 to 5 p.m. Monday through Friday. Blood pressures; infants', chil-

dren's and adults' immunizations; health assessments for Kan Be Healthy, daycare and school entry; fasting blood sugar and hemoglobin; and family planning available by appointment. Sharps containers are available free. WIC program available. Call 890-4888 or go to www.sherman.kansas.com.

If you have questions, concerns or complaints about child care, call the health department.

Water Testing — The Northwest Local Environmental Protection Group does well evaluations, including testing for bacteria and nitrates. To schedule an evaluation or discuss environmental concerns, call the Health Department at 890-4888.

hospital volunteers

Gift shop hours are 9 a.m. to noon and 1 to 4 p.m.; a.m. and p.m. volunteers are in the gift shop. **Today:**

early head start

Early Head Start is a state funded program for income eligible families with prenatal mothers and children up to age three. Families participate in a variety of educational activities and receive free medical and dental care.

Services include special needs of children with disabilities. If you have a family member with a special problem, such as drug or alcohol abuse, job loss or other family crisis, your family can qualify. Call 785-672-3125, ext. 187.

preschool

Sherman County Head Start is a free preschool for eligible 3 and 4 year olds. The federally funded

program is targeted to families who meet certain economic guidelines and provides hearing, vision, dental and educational screenings. Nutritious meals are served, and parents are encouraged to get involved in their children's education. For information call 890-2552.

crimestoppers

If you have information about any crime, call the Goodland Area Crime Stoppers "Look Line" at 899-5665. Your call will be confidential and you will not be asked your name. If the information results in the arrest and/or conviction of those involved, you could be eligible for a reward of up to \$1,000. Goodland Area Crime Stoppers is a nonprofit organization formed by citizens against crime.

The police department can also be called at 890-4570.

family shelter

The Northwest Kansas Domestic and Sexual Violence Services provides help day or night to victims of domestic violence and sexual assault. For information or help, call (800) 794-4624. In the Colby area, call (785) 443-1130.

animal shelter

Lost a pet? Call 890-4575 or go to www.petfinder.com and be sure to enter the Goodland zip code 67735. You can also call the Goodland Police Department at 890-4570 or Northwest Kansas Animal Shelter at 899-4398. Interested in adopting a pet? Call the animal shelter or go to the website www.nwkasgoodland.webs.com.

Fourteen Street Mercantile
Re-sale and consignment shop
106 S. 14th St., Burlington, CO • (719) 346-5698
Open Monday-Friday 9 a.m.-6 p.m.
Saturday 9 a.m.-3 p.m.
Lots of great treasures!
• Glassware • Housewares • Appliances
• Furniture • Tools • Antiques
• Yarn • Model Trains and Much More!

GRMC Auxiliary
Baked Potato Bar
Saturday, March 9 • 11 a.m. to 2 p.m.
United Methodist Church Fellowship Hall
Tickets, \$6 at door or from any Auxiliary Member or at hospital gift shop
Back again this year: HCI Fundraising (Almost everything is \$6!) Starts at 9 a.m. Come early and shop!

Paul's Furniture Co.
In business since 1925
Hours: 8 - 5 M-F • 8-4 Sat.

10 + Show rooms of beautiful furniture • Low Overhead
Specials Daily • Personal Service • Free Delivery
We can get anything the city guys can and usually for less



For more details see us at www.paulsfurniture.com
105 N. Kansas • Selden • 785-386-4310

The school's honor roll.
Your family reunion.
Local business expansion.
No one covers the news that matters to you like your community newspaper.
your community. your newspaper.
The Goodland Star-News
We're your newspaper.

Classifieds work!
899-2338

Lunch Break. We're There.
The Goodland Star-News



Members of the Euphoria Stringband play music from the early part of the 20th Century.

Euphoria Stringband to play at Gateway

Euphoria Stringband will perform at 6:30 p.m. (Mountain Time) on Saturday, March 16, at the Gateway Civic Center in Oberlin. The group plays songs, fiddle tunes and dances from the old-time musical heritage of America popular in the early part of the 20th century. The band has been performing since 1987, with a number of different musicians over the years, and is included in the Kansas Arts Commission Touring Program, as it has since 1989. Band members include Reva Freidman (string bass, vocals) who grew up with folk music and joined

the band in 1988. She is a faculty member at the University of Kansas; Dick Powers (guitar, vocals, spoons) who comes from a long family tradition of musicians. He joined the band in 1990 and teaches second grade in Eudora. Pete Gilbreath (banjo, harmonica, vocals) joined the band in 2006 having previously won the Grandpa Jones frailing banjo contest. He lives in Overland Park with his four kids and works full time as a software architect. Pat Dickey (fiddle, mandolin, banjo-ukulele, vocals) of Topeka joined the band in 2007. Richelle Basgall (fiddle, bodhran,

vocals) joined Euphoria in 2012 and her favorite is the violin. Over the years, Euphoria has performed in Kansas, Missouri, Iowa, Nebraska and Arkansas, playing at dances, festivals, weddings, concert halls, nightclubs and other community venues. This is an Oberlin Arts and Humanities Commission season ticket event or \$12 for adults, \$7 for students through 12th grade at the door. For information call Ella Betts, (785) 475-3557 or Mary Henzel (785) 470-0218.

New rule sets interest rates on farm operating loans

The U.S. Department of Agriculture announced an interim rule Friday that sets thresholds on the interest rates charged by lenders on guaranteed farm ownership and operating loans. The changes will amend guidelines for interest rates and establish new policies that clearly set the maximum interest rate lenders may charge to borrowers. "By providing clear thresholds on interest rates for federally-guaranteed farm loans, U.S.D.A. is ensuring greater certainty to producers, making compliance easier for our lenders and ensuring greater ben-

efits for all farmers and ranchers," said Agriculture Secretary Tom Vilsack. "Setting thresholds ... will strengthen access to farm credit." The department's Farm Service Agency guaranteed loans reduce the risk of loss to lenders by guaranteeing up to 95 percent of the loss of principal and interest on a loan. By reducing a lender's risk, borrowers benefit from a lower rate. The changes are expected to make credit pricing procedures easier to follow and improve compliance for lenders. Farm Service is requesting comments through Monday, June 3,

on the interim policies in the rule, aiming to assure that the benchmark rates required of lenders do not prevent farmers and ranchers from obtaining guaranteed loans. This interim rule is part of efforts to expand credit opportunities for farmers and ranchers. In January, the agency announced a new microloan program to help small and family operations, and beginning and socially-disadvantaged farmers secure loans under \$35,000. The interest rate for microloans changes monthly and is currently 1.25 percent.

Military academy applicants wanted

The Office of Congressman Tim Huelskamp is now taking applications for military service academy nominations. The deadline for submission is October 1..

privilege of nominating a limited number of young men and women aged 17 to 23 to attend four of the nation's five service academies. The process requires an applicant to have a history of personal dis-

cipline and a commitment to his or her school and community. For more information, please call Huelskamp's Hutchinson office at (620) 665-6138 or visit <http://huelskamp.house.gov/nominations>.

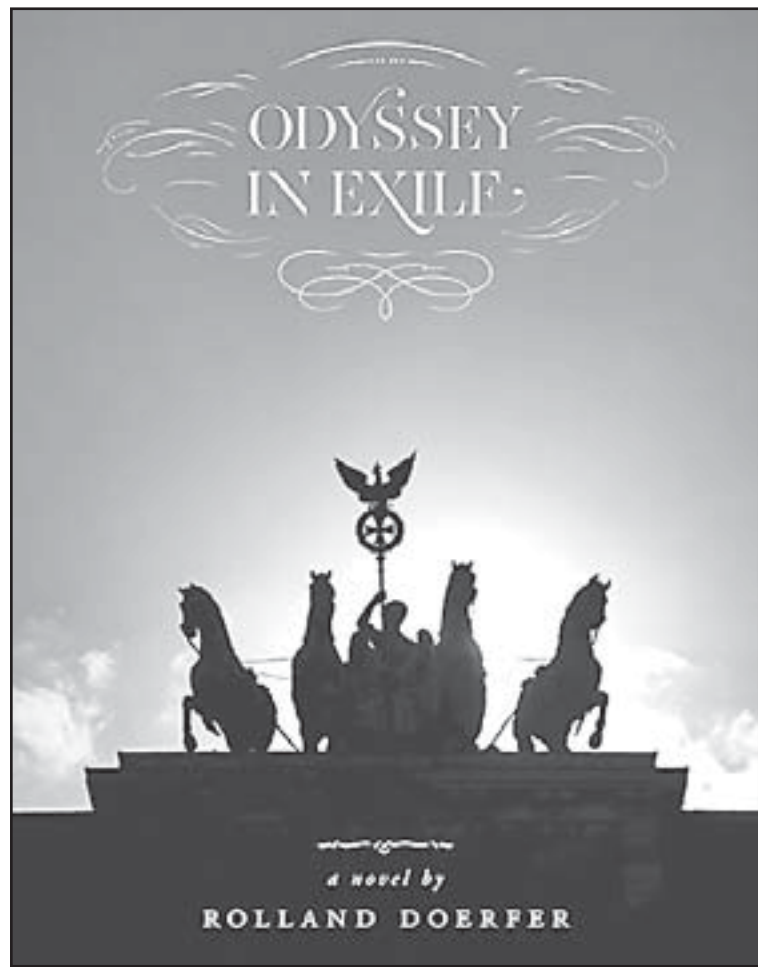
Goodland graduate publishes book

Sherman Community High School 1950 graduate Rolland Doerfer of Royal Palm Beach, Fla., has written a book "Odyssey in Exile" about a five-year span from two sets of great-great-grandparents living in Baden, Germany. In this period of time Germany and Europe were in political and economic turmoil creating challenges for the families of Bartholomew Hilpard and Peter Henry Doerfer. Doerfer has taken family history and historical facts and woven them into a fictional tale.



Doerfer

Bartholomew, a Swiss Prince, enters an arranged marriage with Suzanna, a woman from Alsace, who is a budding spiritualist. The bride and groom are not overly excited about the match. When he leads his Catholic allies into forming a separate confederation from Protestant members, a three-week skirmish ends in defeat. The couple are forced to flee to Baden. There they develop a friendship with a dock worker and labor leader Peter. A death of a German official gives rise to a threat of being charged with conspiracy and they are forced to leave Germany. Doerfer is a veteran of the Navy and majored in history and English in college. He retired after 36 years



The cover of the book written by Rolland Doerfer.

as a teacher and administrator. This is his second book. The first was a narrative genealogy of his and his former wife's eight ancestral lines.

"I believe every family has many interesting events in their ancestry about which stories can be written, with discretion, of course," says Doerfer.

Congressional art contest open to secondary students

Entries are now being accepted for the 2013 Congressional Arts Competition. All high school students in the 1st Congressional District are encouraged to participate. The winning artwork will be displayed in the U.S. Capitol. All art must be received between Monday, March 25, and Monday, April 4, during business hours or by appointment at the Deines Cultural

Center, 820 N. Main, Russell. Awards will be presented at a reception at 1 p.m. (Mountain Time) on Saturday, April 6, at the center. Entries can be submitted in categories of paintings, drawings, collage, prints, mixed media, computer-generated art and photography. "Last year, I received numerous outstanding submissions..." Congressman Tim Huelskamp said.

"The judges stated that although choosing a winner was difficult, they were greatly inspired by the level of talent..." For information call the congressman's Dodge City office at (620) 225-0172 or go to huelskamp.house.gov/serving-you/artcompetition.

Logan paintings highlight national parks of country

In "American Legacy: Our National Parks" more than 50 paintings of national park sites will be on display at the Dane G. Hansen Memorial Museum at Logan from April 12 to June 16. Thirty-eight members of the Plein-Air Painters of America and guests set up their easels at the national sites. The adjective plein-air refers to the philosophical belief that creating art on location, challenging as it may be, is

crucial to successfully documenting a visual and emotional point in time and place. Each artist selected a favorite park. The paintings are a "field journal" that draws viewers into seasonal and daily experience of color and light rendered in pigment on paper or canvas. In some cases the field studies were used to create larger, studio paintings. Museum hours are Monday

through Friday 8 to 11 a.m. and noon to 3 p.m. (Mountain Time), Saturday 8 to 11 a.m. and noon to 4 p.m. (Mountain Time); and Sundays and holidays noon to 4 p.m. (Mountain Time). The museum is handicapped accessible and there is never an admission fee. For information call (785) 689-4846 or to www.hansenmuseum.org.

corrections

The Goodland Star-News will correct any mistake or misunderstanding in a news story. Please call our office at (785) 899-2338

to report errors. We believe that news should be fair and factual. We want to keep an accurate record and appreciate you calling to our

attention any failure to live up to this standard.

Tune in Today!



Goodland's brand new radio station, playing the Legends of Country

www.catcountry.org

READ A NEWSPAPER!

IT'S PORTABLE!




The Goodland Star-News
1205 Main, Goodland • (785) 899-2338

REASON #1 to Support the USD 352 School Bond

QUALITY OF EDUCATION

- Improved Classrooms: Climate Control and Better Lighting
- Improved Wiring to Support 21st Century Technology
- Broader Curriculum and Opportunities for Grades 7-12
- Ability to Recruit and Retain Good Teachers

The future of our community depends on our children and students receiving the best instruction!



Vote "YES" on April 2nd!

Paid for by Building Brighter Futures. Josh Dechant, Treasurer.

Got news? Call us at 899-2338

from our viewpoint...

Spending debate should not end yet

The country will be stepping down an uncharted path this month as federal officials try to figure out how to cut 8.5 to 13 percent from their programs.

So far, despite dire predictions, no one has much noticed. The stock market hasn't bottomed out, the government keeps chugging along. Later, reports say, government employees may have to take one unpaid day off each week, state programs could be cut, the flow of federal money may slow, and the Department of Defense says it will lay off many civilian workers and contractors.

This was never supposed to happen, of course. When both parties agreed to the plan last year, everyone said it was too unpalatable ever to be allowed to go into effect. Then when the deadline came up two months ago, the two sides could only agree to put it off again.

The deal to keep things rolling at the end of the year covered tax breaks for nearly everyone and some of President Obama's tax hikes for the rich, though the 2-point reduction in the Social Security tax rate nearly everyone enjoyed was allowed to expire.

At the time, the Republicans said they wouldn't discuss any more tax increases. Apparently, they meant it.

Last week, Washington writer Bob Woodward reported that it was the White House that first suggested the plan and agreed to it. Now, the president wants to blame it all on the Republicans, who he says defend tax breaks for the rich.

Yet they tell us now, taxes on the rich are the highest they have been in half a century.

Who's right?
Who's wrong?
Who knows?

Blame it on a system where posture and position are more important than results. A system where inaction often produces the desired results, where no one wants to give an inch for compromise, not when they think they have the upper hand.

Today, it's Mr. Obama and the Democrats who think they have the better hand. The Republicans, in control of the House of Representatives, have to posture and delay.

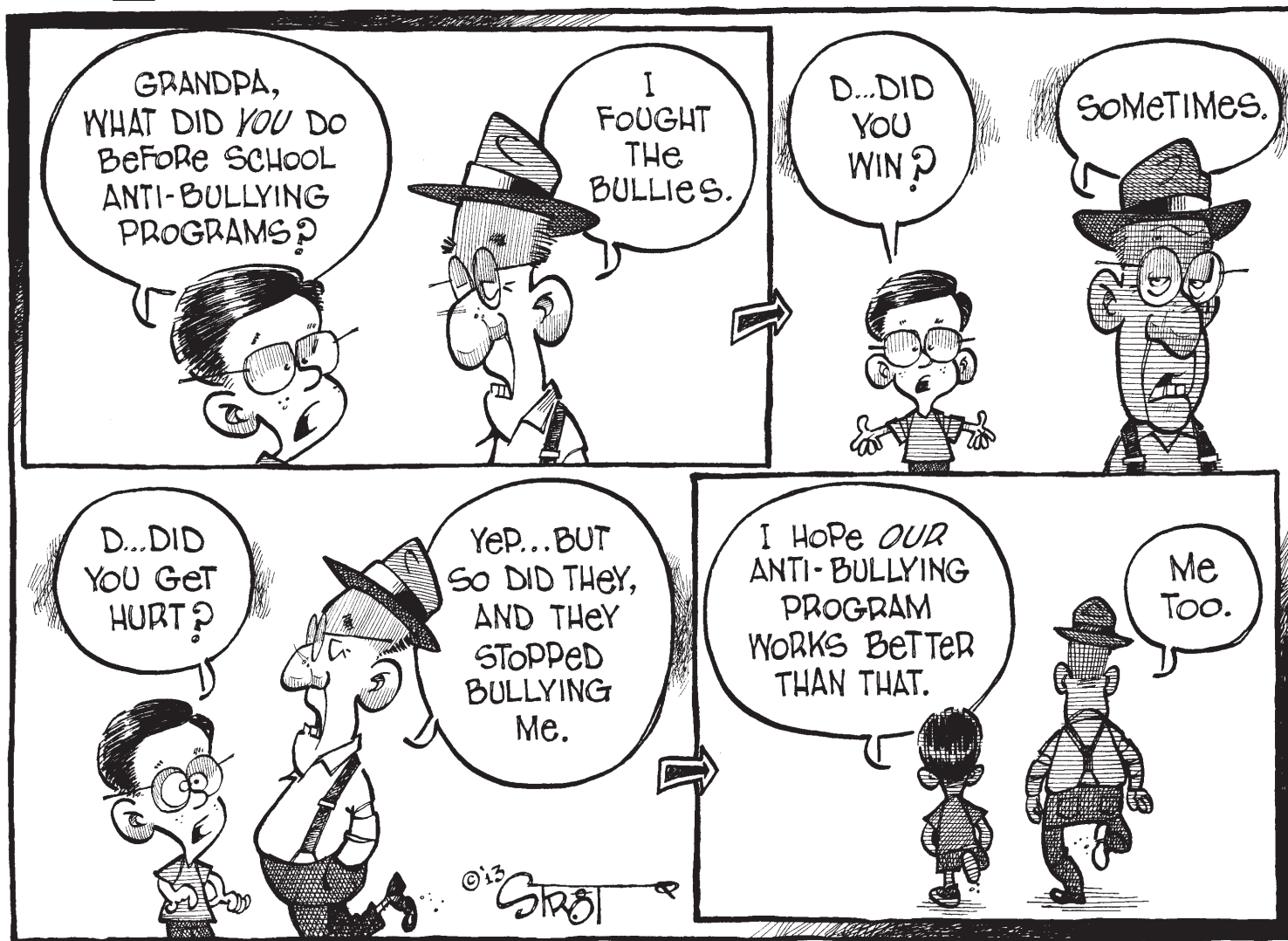
Where once the Democrats had promised to negotiate program cuts, since the election they say they need more tax increases to keep spending up. The Republicans say they aren't willing to talk about that.

Meanwhile, federal workers, states and people who depend on federal programs all are waiting to see what happens. No doubt, many will be hurt as this progresses.

Across-the-board cuts, by their nature, are rough, unpredictable, messy. But there's been no drama. The government has not shut down.

The spending problem remains. The government has been borrowing 40 cents of every dollar it spends. Something has to change there, and if it takes sequestration, as they're calling the mandatory cuts, to bring an agreement, then maybe that's what has to happen.

It's way past time to talk about the issue. — Steve Haynes



Thank you for help on dialysis unit

To the Editor:

On Wednesday, February 27, 2013, a state surveyor from the Kansas Department of Health and Environment was on site at Goodland Regional Medical Center to assess the High Plains Regional Dialysis Service facility. The dialysis service passed the survey with zero deficiencies.

Thanks and congratulations for the outstanding work and perseverance on the part of the project team, including Michelle Thompson, registered nurse and unit manager; Judy Snyder, dialysis technician; Yolanda Bogaert, M.D., medical director; Mardy Jo Gustafson, registered nurse; Sarah Linton, dietitian; Jill Neitzel, pharmacist; Mindy Greene, social worker and her contracted supervisor, Lisa Barton; Lori Phillips, laboratory supervisor; Karen Hooker, project planning coordinator; Mary Ann Elliott, registered nurse who oversaw regulatory and compliance issues; Lori Gaydusek, registered nurse-clinical coordinator; Jim Precht and Diana Slough, who provided financial analysis and assistance with coding, charge development, and reimbursement advice; Dale Schields, human resources



from our readers

to the editor

director during most of the project and executive director of the Foundation, whose leadership to raise funding for the project successfully covered most of the project's capital cost; Steve Criswell and Nick Arnold, who learned how to manage a very sophisticated water system that is essential to effective dialysis; Sara Townsend, who assisted in researching and purchasing the necessary supplies and equipment for the service; Kevin Sanderson, who assisted with emergency policy and procedure development and arranged for enhanced wireless and electronic capabilities in that part of the building; Tina Goodwin, who has publicized our efforts; and others who contributed at different points along the way. My apologies to anyone I have inadvertently left out.

Thanks also to Juanita Barnett, a family member of a dialysis patient who took the time,

along with other patients and families, to come and hear about our plans and advise us on how to proceed. Her encouragement was one of the strongest voices urging us to move ahead with this project, and her input was essential to designing and building a unit that would be patient and family friendly, providing for their comfort as well as their safety. Thanks are also due the Tri-State organization in Burlington, who encouraged us to pursue this project and provided a substantial financial gift toward the construction. There are many others who have made this achievement possible, and we will be arranging a celebratory event in the near future to recognize all who made this essential service a reality in northwest Kansas.

Thank you for your support of hospital staff throughout this process. Please thank the individuals listed for their contributions to a successful project that will continue to generate benefits for patients, the community, and the hospital for many years to come.

Jay P. Jolly, FACHE
Chief Executive Officer
Goodland Regional Medical Center

More support for school bond

To the Editor:

We write this letter as concerned parents, neighbors, business owners, local graduates and moreover, residents of this great community. We write out of concern that we collectively could lose focus of what's important in small communities. We write this letter out of concern for what's next for the local families who have sons and daughters in and about to enter USD 352. We write out of concern for the sustainability of our community — all grounded on thriving schools, thriving jobs, thriving businesses, thriving agriculture and most importantly, thriving families. This is the fabric that weaves our entire community together.

My husband and I are both native to this great town and we're both thrilled to call this "home." It was home for us through our childhood, adolescence and teenage years. We have many fond memories that were cast on the bricks of Main Street, the Flatlander Fall festivals, the Northwest Kansas Area Free Fair, working hard on the farm, delivering newspapers and a little summer play at the swimming pool, among many others. We would love nothing more than for our children to experience a similar childhood to what we had growing up in Goodland.

Both of us have had the opportunity to live outside of Goodland. However, there was a mutual gravitation that pulled us home. Our decision was deeply rooted on the foundation of morals, principles and ethics that are instilled in the residents of Goodland and the greater



from our readers

to the editor

Sherman County area. Principles based on the belief in people. Morals to help one another when they are in need. Ethics to do what's right, even when no one is looking.

This is not the first time the voters of Goodland have been tasked with carefully considering the economic cost and benefit of a school bond. The proposed school bond would result in a 12 mill levy. Or more simply, it would cost \$13.80 per year for every \$10,000 of home value. For instance, a home with a property assessment of \$50,000 would experience an increase in property taxes of only \$69 per year (\$5.75 a month).

As with all things in life, we ask, "what's in it for me?" The benefit of this bond paves the path for a brighter tomorrow on the faith in the young lives in our community. It demonstrates we are serious about investing in the future of our community. It provides qualified educators with a career path. It provides jobs to many support staff in our school system. It provides technically capable classrooms that arm our children with the tools of society and advanced education. It provides a safe learning environment for our children to learn, ask questions, answer, collaborate, problem solve, learn social skills, improve physical health and

more importantly, grow into responsible young adults as we prepare them for their journey in life. It provides a brighter future for our community as well! Attracting new businesses, doctors and young families to share our joys of living in Goodland.

Collectively, we have a responsibility as a community to ensure our children have the proper tools to achieve that. Over time, as the residents of the community progress through to retirement, we will be counting on them to provide the very services you perform and the services you rely on today. The current environment our children are learning in today is the same environment you learned in 10, 20, 45 years ago. It was new then, but like all things, it needs changes and upgrades to work with today's technologies, codes and regulations.

The benefit of this bond far exceeds this cost. The economic cost is as attractive as it has ever been given the economic trends across the United States. We cannot overlook the incentive from the State of Kansas to contribute 22 percent of the bond cost, which is due to expire in July. No bond has never been more important than the one you're being asked to consider today. We welcome an open dialogue and discussion to gain your support in the vote for Building Brighter Futures. We welcome your vote in support of the school bond on April 2. Cast your support by demonstrating your commitment to the community in which we all share and call home. Thank you.

Chad and Gwen Mai
Parents of three

Adapting to postal service changes

Staff members at several of our newspapers have been working to be sure most subscribers outside the cities get their papers on time this week. By the time you read this, of course, you'll know if their effort paid off.

We began working with postal officials three weeks ago to plan for the final closing of the Colby mail-sorting operation. They have given us every consideration. Until last week, postal workers in Colby had sorted newspapers for northwest Kansas and routed them to readers.

This system worked amazingly well. Complaints on newspaper delivery have been rare, a stark contrast to the situation with people living outside the immediate region. Out here, away from big-city post offices and long truck rides, mail has been dependable. For example, Oberlin papers going to Dresden, Norcat, Norton and Jennings had to go away because



steve haynes

along the sappa

of the way Zip codes and postal delivery routes were set up decades ago.

Oberlin is in the 677 Zip area, formerly served by the Colby post office. Norton and the three Decatur County towns are in the 676 area out of Hays. That means those papers had to go from Oberlin to Colby, to Hays, to Norton, then out for delivery.

Now, though, the Postal Service is fighting for survival. To cut costs, it is closing around 100 mail-sorting "plants" this year, with more set for next year. The service also wants to end Saturday mail delivery, except for some pack-

ages, and already has slashed its workforce.

Mail once sorted overnight in Colby now goes to North Platte, Neb., 146 miles to the north. Letters for this area are still supposed to come back the next morning. Most subscribers' newspapers don't have to make that trip, though. Those sorted for a single town, are supposed to be held on the post-office dock in Colby to move directly to outlying towns the next morning.

Readers in some towns reported that they got their copies, mailed on Tuesday, on Saturday or Monday. At least two said they had not arrived as of Monday.

We can only ask for readers' forbearance and forgiveness while we try to adjust our mailings to match the new system. And ask that people continue to let us know if their paper is late — and how late — so we can look for a fix.

The Goodland Star-News

(USPS No. 222-460. ISSN 0893-0562)

Member: Kansas Press Association

Inland Press Association Colorado Press Association
National Newspaper Association

e-mail: star.news@nwkansas.com

Steve Haynes, President
Kevin Bottrell, Editor
Pat Schiefen, Society Editor
Advertising Department

Jessica Corbin, Kayla Bentley and Angela Bonham
Sheila Smith, Circulation Manager

Nor'west Press

Richard Westfahl, General Manager
Gary Stewart, Jim Bowker, James Jackson
Kris McCool, Tracy Traxel,
Judy McKnight, Sheri Arroyo.

nwkansas.com

N.T. Betz, Director of Internet Services
(nbetz49@nwkansas.com)

Evan Barnum, Systems Admin. (support@nwkansas.com)

Published every Tuesday and Friday except the days observed for New Year's Day, Memorial Day, July 4th, Labor Day, Thanksgiving and Christmas Day, at 1205 Main Ave., Goodland, Kan. 67735.

Periodicals postage paid at Goodland, Kan. 67735; entered at the Goodland, Kan., Post Office under the Act of Congress of March 8, 1878.

POSTMASTER: Send address changes to The Goodland Star-News, 1205 Main Ave., Goodland, Kan. 67735.

TELEPHONE: (785) 899-2338. Editorial e-mail: star-news@nwkansas.com. Advertising questions can be sent to: goodlandads@nwkansas.com.

The Goodland Star-News assumes no liability for mistakes or omissions in advertising or failure to publish beyond the actual cost of the ad.

SUBSCRIPTIONS: In Sherman County and adjacent counties: three months, \$29; six months, \$46; 12 months, \$81. Out of area, weekly mailing of two issues: three months, \$39; six months, \$54; 12 months, \$89 (All tax included). Mailed individually each day; (call for a price).

Incorporating:

The Goodland Daily News 1932-2003

The Sherman
County Herald
Founded by Thomas McCants
1935-1989

THE SHERMAN COUNTY
STAR
Founded by Eric and
Roxie Yonkey
1994-2001

Nor'West Newspapers
Haynes Publishing Company

College biodiesel program gets grant

BIODIESEL, from Page 1

riculum development, instructional support, student scholarships and internships, equipment and monetary donations and grants. Industry donations to the program over the past two years exceed \$250,000.

Faculty initiated the biodiesel component of the program through generator donations from Murfin Drilling and Pioneer, Inc. The program used the value of the generators as a match for a grant to purchase a 40-gallon biodiesel maker. With the assistance of the electrical department and industry expertise, the Kansas Institute of Diesel Technology building

can now be powered by biodiesel created from used vegetable oil. The Excellence in Technical Education grant will allow the program to expand the project to power additional buildings on campus.

Northwest Tech is a progressive technical college in Goodland, Kansas. The college is the fastest growing higher education institution in the state of Kansas with enrollment nearly doubling in the past three years. Northwest Tech aims to transform technical education by enhancing quality education with technology, diversity and student life. For more information on Northwest Tech, visit www.nkwtc.edu.

Apply now for innovation grant

U.S. Department of Agriculture's Natural Resources Conservation Service will provide up to \$25 million in grants to help develop and demonstrate cutting-edge ideas to improve conservation on private lands.

Conservation Innovation Grants are available for state and local governments, federally recognized Indian Tribes, non-governmental and educational organizations, private businesses, and individuals. Grant applications are due Friday, March 22.

Of particular interest are applications for innovative demonstration partnerships on energy conservation, nutrient management, soil health,

wildlife habitat, and adaptive management.

"These grants are critical for developing and demonstrating out-of-the-box ideas for conservation on America's private lands and strengthening rural communities," said State Conservationist Eric B. Banks. "They inspire creative problem-solving that boosts the production of our farmers and ranchers and ultimately improves our water, air, and soil."

The conservation service has offered this grant program since 2004, investing in ways to demonstrate and transfer efficient and environmentally friendly farming and ranching. In the past eight years, the grants have helped develop trading

markets for water quality and have shown precise ways to farm and use fertilizer, water, and energy more efficiently.

The grants are funded through the Environmental Quality Incentives Program and are awarded through a competitive process.

At least 50 percent of the total cost of the grant projects must come from non-federal matching funds, including cash and in-kind contributions provided by the grant recipient.

For more on this grant opportunity, visit go.usa.gov/4Kvx. To apply electronically, visit www.grants.gov or contact a local conservation office.

Company to improve Levant grain facility

The Scoular Company and Hi-Plains Cooperative of Colby, KS, jointly announced today an agreement to own and improve a grain-handling location in Levant, KS, currently operated by Hi-Plains. Terms of the transaction were not announced.

"Scoular and Hi-Plains have enjoyed a long-standing working relationship," said Steve Dunn, Scoular's vice president. "We're pleased to further substantiate that relationship by joining efforts at Levant to grow both of our busi-

nesses and simultaneously create a convenient and competitive market for local farmers." The Levant location is the fourth Kansas facility on which Scoular and Hi-Plains have collaborated to own and operate.

Renovations and new construction at the Levant location are slated to begin this spring with completion scheduled in time for the 2013 fall harvest. The upgraded Levant facility will be operated by Hi-Plains and further both Scoular's and Hi-Plains' commitment to farmers in northwest Kansas.

March designated Red Cross Month

March is the 70th anniversary of Red Cross Month, and the American Red Cross is recognizing the everyday heroes who contribute to their community.

"Please remember those who help all of us here in Western Kansas by giving their time to help their neighbor," said Megan Carver, Service Center Manager of the Western Kansas American Red Cross. "We want to thank our heroes during Red Cross Month

-- our volunteers, blood donors, students and financial supporters who help those in need."

March was first declared Red Cross Month in 1943 by President Franklin D. Roosevelt. Since then, every president has followed the tradition.

The Western Kansas Red Cross is a United Way agency. It is not a governmental organization, so it relies on donations of time, money and blood to do its work.

Board lays out costs of bond proposals

BOARD, from Page 1

bond and with the sales tax \$4.20.

For a \$50,000 piece of commercial property the increase would be \$150 and with the sales tax \$109.38 per year. On \$100,000 the increase would be \$300 and with the sales tax \$218.75 and for \$200,000 it would be \$600.000 and with the sales tax \$437.50.

Included in the school bond would be storm shelters for West and North Elementary School. Bob Lamb asked about the construction of the shelters. Nemechek said the walls and roof would be 12-inch reinforced concrete which would withstand over 200 mph winds

and would be classed as a Federal Emergency Management Agency shelter. Biermann showed a clip on the screen on how the windows would be secured by shutters that would lock when they were closed on the inside.

Biermann said that some were wondering how much the increase in sales tax would be. It would raise the sales tax from 8.55 to 8.8 percent or 2 1/2 cents on a \$10 purchase. On a \$20,000 purchase it would amount to \$50.

When asked what the school board would do if the bond failed, Biermann said the board would have to start from scratch.

Applications available now for college scholarship

This spring, the Shelter Insurance Foundation will award a \$2,000 scholarship to a graduate of Goodland High School, sponsored and partially funded by local Shelter Insurance Agent Jim Alcorn.

A committee of local high school officials and community leaders will select the recipient. The committee will consider each applicant's scholastic achievements, education goals, citizenship, moral character and participation and leadership in school and community activities.

The scholarship is given without regard to race, disability, religion, national origin or gender of the applicants. The recipient will be announced at the end of the school year.

The student may apply the scholarship toward tuition, fees or campus housing for any course of study beginning the fall after the recipient's high school graduation and leading to an academic degree at any accredited college or university. The foundation makes payments directly to the school the recipient selects.

Applications are due March 31. Applications and additional information about the scholarship are available from Alcorn's office, located at 1624 Main Street, as well as the high school counselor and principal.

The Shelter Insurance Foundation is a non-profit corporation for charitable and educational purposes. It is sponsored by the Shelter Insurance Companies.

The Goodland Star News Service Directory

NEW SYSTEM PROFESSIONAL WINDOW CLEANING



Serving Northwest Kansas & Northeastern Colorado since 1992!

(785) 462-6995 OR (800) 611-6735
egriffith@st-tel.net

www.mywindowcleaner.net



Eldean and Janet Griffith • PO Box 692, Colby, KS

Residential...Land...Commercial... Real estate is what I do!



homelandg@st-tel.net
www.goodlandks.mls.com

Office phone: (785) 899-3060
Rose Cell: (785) 821-1179
Office fax: (785) 899-3100

Rose Koggie Associate Broker

HomeLand REALTY AUCTION
"Western Hospitality"
1112 Main Street, Goodland, KS 67735

NEBRASKA LAND KANSAS LAND COLORADO LAND TIRE GROUP

GOOD YEAR

KANSASLAND TIRE

Willie Weems Store Manager 24-hour Service

1402 Main Goodland, KS 67735
www.thetirestore.com

785.899.3689
Fax: 785.899.2131
Toll Free: 800.281.3689

Tire and Auto Service Professionals

RCDSDS RIGHT COMBINATION DANCE STUDIO



Visit our website at: rcdsnow.com

Call Kayla or Angela today to find out how our Service Directory does all the hard work for you!

(785) 899-2338

Culligan

Better Water. Pure and Simple™
Quality Service since 1948

Scheopner's Water Conditioning, Inc.

904 Main, Goodland (785) 899-2352

- * Drinking Systems
- * Water Softeners (Sales & Rentals)
- * Water Coolers
- * Salt Sales & Delivery

Windy Plains Bike Shop

Professional bicycle repairs since 1978!
Parts, accessories and service for all makes.
Pick up and delivery available in Goodland!

TIRED OF FLATS? ASK ABOUT OUR NO FLAT GUARANTEE!

Harold Sneten
6085 Rd. 17
(785) 899-4786 • (785) 899-5858 (home)
Same day service on most out of town repairs!



Superior Flooring and Furniture and Accessories



360 14th St., Burlington, CO ~ PHONE: (719) 346-7579 Dan and Myrna Troyer

"Seek Shelter Today!"
LIFE • HOME • CAR • FARM • BUSINESS

Jim Alcorn, Agent
1624 S. Main Street
Goodland, KS 67735-0727
Business: (785) 899-2553



www.shelterinsurance.com



Truck Lettering 800-886-2423

AWARD WINNING SIGNS AND PINSTRIPING SINCE 1974

Hot Brush 204 W. 4th Box 309
Bird City, Kan. 67731

WANTED: DIRTY CARPET
IF YOU HAVE DIRTY CARPET, WE CAN STEAM CLEAN IT.
NO JOB TOO BIG OR TOO SMALL!

- Commercial/Residential
- Advanced Truck Mounted Steam Cleaning Equipment
- Water Damage Restoration
- FREE ESTIMATES

PRO FLOOR CARE
Carpet & Upholstery Cleaning
(785) 462-8313 or (800) 473-4138



The Decorating Co.

Interior Design Consultants
Irene Smith & Rochelle Kling

There's no limit to our imagination.

106 E. 11th, Goodland, KS 67735
(785) 890-5441
E-mail: decorco@st-tel.net



TRANE Air Conditioning

Bowman's Heating / Air Conditioning

Heating and Air Conditioning is our business! Call Bowman's Heating & Air today for sales, service, installation or repairs!

577 W. 31st, Goodland • PH: (785) 899-5770



2009 PRESIDENT'S AWARD

Ford

2009 PRESIDENT'S AWARD

"Where Service is an Affair of the Heart"

DAN BRENNER FORD, INC.

222 W. Hwy. 24, I-70 BUSINESS LOOP, GOODLAND, KS
(Toll Free) 800-636-8770
(Business) 785-899-2316 (Fax) 785-899-2317

Newton magnet firm sells internationally

By Ron Wilson
Director
Huck Boyd National Institute
for Rural Development
at Kansas State University
 Magnets. They are a phenomenon of nature, and the power of their magnetic current can be used in various ways to generate electricity or to pull or repel metal. Today we'll learn about an innovative Kansas company that has found ways to harvest that magnetic power in a remarkable diversity of products which it is marketing around the world.

Bob Bunting is president and owner of Bunting Magnetics in Newton. The company was founded by his father, Walter Bunting, in 1959. At that time, the use of magnets in the can handling industry was popular, so the senior Mr. Bun-

ting began his company in Chicago where several can manufacturers were located. He grew the company through the years. "During the company's first 20 years, we moved to four different locations (as we grew)," Bob Bunting said. "Then my dad said he wanted to find a location with enough land so that when he needed to expand, he wouldn't have to move again."

The company did an extensive search for a new location and in 1979 made its selection, choosing to relocate the company to Newton. Newton was much smaller than Chicago, but was centrally located on the continent and was served by an interstate highway. The company owns a 101-acre industrial site so it has plenty of room. "Dad got his wish," Bob Bunting said. Bob worked his way up through

the business and became president of Bunting Magnetics in 1993. The company expanded and diversified over time.

Today the world headquarters of Bunting Magnetics is in Newton along with a manufacturing operation. The company also has facilities in Chicago, Pennsylvania, England, China and Australia.

The company has a diverse product line, but its products all relate to one key element: magnets. "My goal is to solve the world's problems through the use of magnets," Bob said with a smile. While those magnets were originally used in can manufacturing plants in Chicago, Bunting Magnetics engineers developed and designed many new applications through the years.

Now the company's products can be grouped into seven categories of

use: magnets themselves plus flexible dies, material handling, metal detection, printing, plastics and magnetic separation.

In practice, Bunting products might be used on surgical drills for the medical industry, conveyor systems for material handling, pharmaceutical or foil package inspection, magnetic cylinders for printing and many other ways. For example, Bunting is said to be the "the world leader in producing the best magnetic cylinders."

A growing application is in food safety. "All of our (nation's) food begins on a farm, but think about all it goes through to reach the consumer," Bob said. The raw food is harvested, trucked, stored, shipped and processed, probably with metal equipment. "Our magnetic separator can

remove ferrous contamination from the final food product," he said.

Bunting Magnetics products have literally been sold from coast to coast and around the world, from Europe to South America and the Pacific Rim. The company employs 185 people, most of them at Newton. Such employment is a significant benefit to Newton and surrounding rural communities such as Burns, population 274 people. Now, that's rural.

What are the keys to the company's success? "I believe we've been successful in understanding our market, where we belong," Bob said. "I'm proud of the workforce we've developed over time. We want to hire good people and keep them. We're committed to the community and we reinvest here."

business. Bob's son Robert Bunting joined the company six years ago, making him the third generation in the company.

"People here like seeing the stability of that," Bob said. The company was recently named Wichita Trade Council Business of the Year and earned the Wichita Business Journal's award as Best in Business 2012. For more information, go to www.buntingmagnetics.com.

Magnets. They are a phenomenon of nature which can be used in many manufacturing applications. We salute Bob Bunting and all the people of Bunting Magnetics for making a difference with their innovative, world-class applications of these products. For me, such success draws me in like a magnet.

Bunting Magnetics is a family

Use an inside day or two to clean kitchen shelves

Winter days keep us indoors more than out, and a Kansas State University food scientist recommends choosing an inside day or two to clean the kitchen.

"There's no reason to wait until spring," said Karen Blakeslee, who noted kitchens typically get a workout during the holidays and on Super Bowl Sunday.

She suggests removing all items from one or two cupboards at a time before washing the cupboard, inside and outside.

"Allow time for the cupboards to air dry," said Blakeslee, who advised checking clean, dry cupboards for cracks or holes that will need to be caulked to protect foods from insect damage.

Reusable, washable shelf liners should be washed and air dried or replaced, she said.

Blakeslee recommended discarding food products with signs of insect or other damage, such as a dented can or a cracked glass jar.

She suggested sorting products by type and date, and noted that nonperishable foods typically carry a "Use-By" date to indicate how long they are expected to retain quality, flavor and texture.

Look for dates on canned fruits, vegetables or soups, dried food such as fruit or packaged pastas, and soft packs, such as tuna or sauce mix, said Blakeslee, who is the rapid response coordinator with Kansas State Research and Extension.

When returning food to the clean cupboard — or restocking — she advises placing the newest foods behind older foods that should be used first.

Evaluate spices and flavorings that typically lose quality after opening. Like most foods, spices should be stored in a cool, dry place, said Blakeslee, adding that they should be used within six months and replaced after a year.

Since dates are not always as obvious on small packages, she encourages consumers to buy smaller quantities of seldom-used spices and to label and date them after purchase.

Don't confuse "Use-By" dates with "Sell-By" dates, which serve as a guide for grocers to remove out-of-date products from shelves, she said.

Blakeslee offered an explanation of dates from the U.S. Department of Agriculture's Food Safety and Inspection Service:

- A "Sell-By" date tells the store how long to display the product for sale; consumers should buy the product before the date expires.
- A "Best if Used By (or Before)" date is recommended for best flavor or quality. It is not a purchase or safety date.
- A "Use-By" date is the last date recommended for the use of the product while at peak quality. The date has been determined by the manufacturer.

- Closed or coded dates are packing numbers for use by the manufacturer.

During kitchen cleaning, the food scientist recommends:

- Store pots, pans and dishes, rather than food, near warm locations like heating vents.
- Store seldom-used items, such as holiday cookie cutters, in out-of-the-way or seldom-used cupboards,

such as the small cupboard over the refrigerator.

- Group packages such as yeast and seasoning mixes in a small basket or box for easy access.

- Store frequently used items within easy reach in areas between the shoulders and knees.

- Group baking items such as flour, sugar, baking powder, bowls and spatulas in a baking center.

- Move picnic or tailgating gear and seasonal tableware to another room.

- Sort utensils and choose one or two favorites of each type; pass still usable items on to students or others who are setting up a household, or donate them to a thrift shop.

- Organize smaller gadgets by type in baskets or boxes within a drawer.

- Designate a cupboard close to the sink and dishwasher to store dishes, table and glassware.

- Empty the refrigerator periodically and discard leftovers or other foods that are past their prime. If possible, remove shelves and drawers for cleaning. Clean the exterior with warm, soapy water and vacuum dust and dirt from under the appliance.

Blakeslee stresses the importance of reading and following manufacturer's recommendations for cleaning appliances, cooktops, countertops and cabinets.

More information on food storage is available in the guide, "Cupboard, Approximate Storage Times" available through county Extension offices and online at www.ksre.ksu.edu/bookstore/pubs/L806.pdf.

Pianists



Goodland High School juniors Berkley White (above) and Brianna White (right) recently competed at Regional Piano Festival. Both received II's. They are pictured here from a piano recital held on Sunday at the First Christian Church, 711 Arcade.

Photos by Pat Schiefen
 The Goodland Star-News

160+/- ACRES SHERMAN CO, KS CROPLAND

LAND AUCTION

THURSDAY, MARCH 21, 2013 @10:30 AM, MDT

AUCTION LOCATION: HOLIDAY INN EXPRESS, GOODLAND, KANSAS

SELLER: MCKEE FAMILY TRUST

LEGAL DESCRIPTION: SE/4 of Section 26-6-40

LAND LOCATION: From the junction of Caldwell and Hwy 27 North of Goodland airport, go 8 miles North to SH 75 and 2 miles West to the SE corner of the property. **SIGNS WILL BE POSTED!**

MANNER OF SALE: This real estate will be offered in one tract. Auction procedure and increments of bidding are at the discretion of the auction company.

TERMS: 10% down day of sale, with the balance to be paid on or before April 23, 2013, or upon such terms as may be acceptable to the Seller. Personal and corporate checks are acceptable for the down payment with the final payment to be made in certified funds. All funds will be held by the auction company in their trust account or by an identified title/escrow company. Bidding is not contingent upon financing. Financing, if necessary, needs to be arranged and approved prior to the auction. Bids are subject to Seller confirmation. **Announcements made day of sale will take precedence over printed material and previously made oral statements.**

MINERAL RIGHTS: All of the Seller's interest will transfer to the Buyer at closing.

CROPS: There are approximately 78.8 acres planted to wheat and the Buyer will receive 100% of the 2013 wheat crop.

CROP INSURANCE: There is YP crop insurance in effect on the 2013 growing wheat crop at the 65% level. Seller will transfer all rights of indemnity to the Buyer at closing. Buyer will pay the premium at closing and receive any benefits therefrom.

FSA PAYMENTS:

	CROPLAND ACRES -	157.9
	BASE ACRES	DCP YIELD
Wheat	78.8	36
Corn	7.0	44

Buyer will receive 100% of all FSA payments associated with the 2013 crop year.

CLOSING: Closing will be on or before April 23, 2013.

POSSESSION: Date of closing.

REAL ESTATE TAXES: Seller will pay taxes for 2012 and prior years. Taxes for 2013 will be the responsibility of the Buyer. (2012 real estate taxes = \$264.30)

ACCEPTANCE OF BIDS: The successful bidder will be required to enter into a real estate purchase contract immediately following the auction. Copies of the contract will be available from the auction company prior to the sale.

ACREAGES: Acreage figures are considered to be approximate and are from reliable sources based on (USDA) FSA figures. All FSA information is subject to change, including but not limited to the number of cropland acres, grass acres, base acreages and yields. FSA acres may not be the same as deeded acres or county appraiser acres. Acreages are not covered by title insurance.

EVIDENCE OF TITLE: Seller will provide title insurance to the Buyer in the amount of the purchase price with the premium to be paid one-half by the Buyer and one-half by the Seller. Title evidence will be provided on sale day.

INSPECTIONS: Each potential bidder is responsible for conducting their own independent inspections and due diligence concerning pertinent facts about the property. Neither Seller nor Farm & Ranch Realty, Inc., its agents or representatives, are making any warranties about the property, either expressed or implied.

EASEMENTS: This sale is subject to all rights-of-way and easements, whether recorded or not, and to an oil and gas lease of record, if any.

AGENCY: Farm & Ranch Realty, Inc., its agents and representatives, are the Exclusive Agent of the Seller.

For virtual tour visit
www.farmandranchrealty.com

AUCTIONEER'S NOTE: This is an EXCELLENT DRYLAND QUARTER with 157.9 acres of cropland. There are 78.8 acres planted to wheat with the balance in wheat stubble that is ready for spring planting. The Buyer will get full and immediate possession, including the growing wheat crop - together with all the Seller's interest in the mineral rights - at closing. RESERVE THE DATE - MARCH 21st @ 10:30 AM, MDT We will see you at the Holiday Inn Express for the sale!

24th Annual Raile Charolais/Red Angus Production Sale

Monday, March 18, 2013, 1 p.m. CST - St. Francis Auction Market, St. Francis
 Selling 77 Bulls, 45 Charolais, 20 Red Angus, 12 Composite CharolaisXRed Angus or Angus
 Selling 30 Females, 15 Top End purebred Charolais, 15 top quality CharolaisXRed Angus (Show prospects)

Charolais Sires: Finks 2250, Finks 8823 Schurrtop J827, Raile Bluegrass X195 Raile 5744 X150	Red Angus Sires: Feddes Sky 862, CTC Grandstatement 1025
--------------------------------------------------------------------------------------------------------------	-----------------------------------------------------------------------

These bulls will increase length, muscle, improve yield grade and marbling while increasing efficiency in the feed yard and cow herd

With over 40 years of performance and carcass testing and 14 years of ultrasound data, you can buy with confidence.

ID#	BW	WW	YW	Milk	ADW/RATIO	ADY/RATIO
Z050	3.8	43	84	4	764/118	1473/115
Z053	1.2	31	61	10	700/108	1313/103
Z098	0.7	59	118	25	770/115	1467/117
Z236	1.1	25	49	14	635/108	997/100

Z050 • Raile X150 X Primecut 0107

Z053 • Raile X150 X Finks 2250

Z098 • CTDB Grandstatement 1025 X Sorg 6194

Z236 • Raile Bluegrass X195 X Super Charlie 0767

Ultrasound data available on all bulls.

Raile Charolais/Red Angus
 1965 Road 7 • St. Francis, KS 67756
 Cliff and Judy Raile 785-332-2794 Mark Hilt 303-638-5107
 Cliff Raile (cell) 785-332-6084
 E-mail craile@wildblue.net • www.railebeef.com

DVAuction Broadcasting Real-time Auctions
 Live Sale Broadcast on
 Sale Consultant:
 Kristian Rennert 308-440-9463

Visit us on Facebook! Goodland Star News

FARM & RANCH REALTY, INC.
 1420 W. 4th • Colby, KS 67701
 TOLL FREE (800) 247-7863
DONALD L. HAZLETT
 Broker/Auctioneer

"When you list with Farm & Ranch, it's as good as SOLD!"

Family-owned farms a source for onions

By Kay Melia

Master Gardener
vkmelia@yahoo.com

On the cover of their little 5x8 inch catalog, the words 'WE KNOW ONIONS' jump right out at you; get your undivided attention!

I dearly love onions! But I can't remember how I discovered this family owned onion production facility, but I'm grateful I did. And as a result, they have been supplying me, and a lot of my gardening friends, with beautiful, healthy, dependable onion plants for many years.

This place is called Dixondale Farms, and they perform their magic just a few miles outside Car-



kay melia

the gardener

rizo Springs in the southwest part of Texas.

It isn't often that I make an effort to convince my friends that a product I use seems better to me than another, but I have a definite bias when it comes to Dixondale Farms, and I promise you that I'm not on their payroll!

Dixondale Farms is celebrating

their 100th anniversary this year. The Company was founded in 1913 by John Mabson McClendon, and is now headed by his great-granddaughter Jeanie Frasier and her husband Bruce, as well as other family members. That's four generations and 100 years of service.

The aforementioned catalog, sent out every December to their customers, and their website, are veritable history books of successful onion plant production. Their plants, as well as their distribution system, are

literally marvels of success.

As a result, Dixondale Farms is now the largest grower of onion plants in the nation. Not only do they sell to individual gardeners like you and me, but they also supply hundreds of garden centers and greenhouses all across America.

On this, their 100th anniversary, Dixondale developed and is now offering a new variety of onion to their mail order customers only. It's called "Texas Legend" and we can expect it to be at least as sweet and mild as it's famed parent, the 1015y Texas Supersweet, one of the most celebrated sweet onions in the nation.

Texas Legend is a large yellow onion, packed with food value and is actually an open pollinated "short day" onion, which means it thrives best in areas south of our High Plains. But I can hardly wait to plant a row of them in this, their first year of distribution!

Dixondale Farms offers about 25 different varieties of onion plants. Please understand that they do NOT sell onion sets, those little bulblets that you plant if you want to grow scallions or green onions. Their plants are divided into offerings for the northern part of the nation, for the central portion and for the south, and there is no question as to which

ones should grow best for you.

There is also a section of their catalog devoted to onion fertilizers, fungicides, herbicides and other helpful supplies, and invaluable growing advice.

Dixondale Farms doesn't sell Vidalia onions. Vidalia is a privately owned brand sold only in a small area of Georgia. But get this! Dixondale Farms sells Georgia farmers the seed for their Vidalia crop!

If you enjoy growing big sweet onions, you'll love everything about the big family farm near Carrizo Springs, Texas!

House plants may need repotting in Spring

As outdoor plants break dormancy and start to grow in response to the longer days and warmer spring temperatures, houseplants usually put on a spurt of growth as well. Eventually, these indoor plants outgrow their containers and need to be repotted. To check if your plants are becoming root bound and need a larger pot, inspect the root system.

First, knock the plant out of its pot. Watering several hours before this operation will allow the plant to be removed more easily. On pots that are eight inches in diameter or less, place one hand over the top of the pot



dana belshe

ag notebook

with the stem of the plant passing between two fingers, and turn the plant upside down. Then rap the edge of the pot against a table. The root ball should come away from the pot. On pots that are more than 8 inches in diameter, a bit more encouragement may

be needed. Place the pot on its side and rap the top edge of the pot with a rubber mallet. Turn the plant a few degrees, and repeat the procedure until the root ball releases.

Once the plant is free, take a look at the root ball. If you see a clear network of roots, the plant needs to be moved to a larger pot. If the original pot is less than 10 inches, move up an inch in size; if 10 inches or larger, increase the size two inches. If the pot has one or several large holes in the bottom for drainage, cover the holes with pot shards (pieces of a broken

clay pot) or gravel so that the potting mix is not washed out during watering.

It is essential that the plant sit at the same level it was in the old pot. Add enough potting mix to the bottom of the pot to ensure this.

This mix will need to be firmed before the plant is placed on top of it so it doesn't settle over time. After the plant is placed, fill in around the original root ball with potting soil. Again, firm this soil with a slender stick, or tap the bottom of the pot on the table. If this firming is not done, new soil will be so light and airy that water will

tend to move through it rather than through the whole root ball.

Water the plant thoroughly after repotting, but be especially careful not to overwater for about two weeks. The new soil tends to stay wet until roots penetrate. Overwatering can lead to rot. Most plants need to be repotted annually though vigorous growers may need to move up sooner.

Slow-growing plants may stay in the same pot for more than a year.

Business tips to stop because of tax cuts

"All stories, even the ones we love, must eventually come to an end and when they do, it's only an opportunity for another story to begin."

~Mr. Magorium's Wonder Emporium

After 336 business tips of the week, this is my last one. Due to recent tax cuts, this project is ending on March 1. I would like to use this last tip to say thank you.

Thank you to this newspaper for printing these free of charge all these years. Thank you to you for reading them. Thank you to my board of directors for your support, your guidance, and your encouragement. Thank you to our



jamie morphew

business tips

funders for paying the bills. And thank you to all our clients for giving us the opportunity to work with you. I now call so many of you friends.

It's been a rewarding eight years full of great people and great opportunities.

THANK YOU!

This tip was brought to you by Western Kansas Business Consulting sponsored in part by Sherman County. We offer free and confidential business consulting to Kearny, Scott, Sherman and Wichita counties.

Meat goat producer day to be in Manhattan

Kansas State University will hold its third annual Kansas Junior Meat Goat Producer Day, Saturday, March 23, in Weber Arena in Manhattan.

Registration begins at 7:45 a.m. (Mountain Time), with the program starting at 8:15 a.m. (Mountain Time).

"The Junior Meat Goat Day is an interactive way for young producers to learn about meat goat production and management practices," said Kristine Clowers, youth livestock coordinator with Kansas State Research and Extension.

"While the program includes information that would be beneficial for youth who show goats in 4-H and other competitions, it's also helpful to anyone who is interested

Goat numbers down

There are currently 2.86 million goats in the U.S.

As of Jan. 1, the total inventory of goats in the U.S. was 2.86 million head, down four percent from 2011.

The breeding goat inventory totaled 2.38 million head, down four percent from 2011. Does one year old and older were at 1.78 million head, three percent below last year. Market goats and kids

totaled 487,000 head, down five percent from 2011.

Meat and all other goats totaled 2.36 million head on Jan. 1, 2012, down four percent from 2011. There were 360,000 milk goats, unchanged from Jan. 1, 2011. Angora goats were down 15 percent at 146,000 head.

- U.S. Department of Agriculture National Agricultural Statistics Service

A non-competitive Skillathon will be available for youth to participate in, which includes identification of feeds, equipment used for general goat care, wholesale meat goat cuts and breeds. The day ends with an awards ceremony.

The cost to attend is \$15 per person if paid by Friday or \$20 later. Participants will receive a T-shirt, lunch and a Meat Goat Show Guide.

Information is available at www.asi.ksu.edu/p.aspx?tabid=58. Scroll to "Important Deadlines/Calendar." Or contact Kristine Clowers at clowers@ksu.edu or (785) 532-1265 or Brain Faris at brfaris@ksu.edu or (785) 532-1255.

Presentations will include: market and breeding goat selection; facilities; health and wellness; nutrition; and fitting and showing.

Classifieds work! 899-2338

cancer transitions

Moving Beyond Treatment

A Program of the Cancer Support Community and LIVESTRONG™

Free six-week workshop to help cancer survivors make the transition from active treatment to post-treatment care.

Sessions:

- March 13—Get Back to Wellness
- March 20—Exercise for Wellness
- March 27—Emotional Health & Well-Being
- April 3—Nutrition Beyond Cancer
- April 10—Medical Management Beyond Cancer
- May 8—Life Beyond Cancer

Time: 12:00 to 1:30 p.m. MST
Location: Goodland Regional Medical Center—Large Boardroom, 220 W. 2nd Street

For more information contact:
(785) 890-6059
Sponsored by:

Escape from Planet Earth 3D (PG) starts March 15!

March 8-14
Safe Haven

PG-13: Thematic material involving threatening behavior; violence; and language.

www.goodlandnet.com/movies

Bring this Ad to the Theater. 30% off large popcorn & drink. (Expires 12/31)

NIGHTLY 7 PM MOVIES
Movie bucks make great gifts!
Sunday Matinee 1:30 PM

Sherman
1203 Main - Phone 899-6103

Apostle Peter and the Last Supper. March 24 1:30 PM-FREE

NOTICE OF OWNERS OF TAXABLE PERSONAL PROPERTY

All owners of taxable personal property (including boats, jet skis, mobile homes, campers, snowmobiles, golf carts, mopeds, dirt bikes, trucks, non-highway vehicles, trailers, airplanes) MUST come to the appraiser's office to report ownership of such property. ALL Personal Property MUST be listed by March 15. Any questions concerning personal property items call 890-4825 Sherman County Appraiser's Office.

WE NOW PRORATE WATERCRAFT.
Owner of record is to notify the County Appraiser within 30 days of the acquisition or sale.

GRAND OPENING

SELL-A-BRATION

YFS

GOODLAND

YOST FARM SUPPLY

Join us Friday, March 15, 2013
725 W. Hwy. 24, Goodland, KS

Grand opening of our new facility for our current and future customers. We will have factory representatives from several companies to answer questions and go over products. We will have the following sessions throughout the day:

- 8-9 a.m.: New Holland hay and forage Q&A
- 9-11 a.m.: New Holland/Trimble autoguidance Q&A
- 11 a.m.-1 p.m.: Lunch
- 1-2:30 p.m.: Great Plains crop production/planters Q&A
- 2:30-4 p.m.: New Holland combine settings/walk around Q&A

We will be offering door prizes and 10% off all Stihl equipment that day only! We will also have **Russ Ehart**, a chainsaw carver, here all day long for your enjoyment.

DOOR & WINDOW REPLACEMENTS

SEAMLESS RAIN GUTTERS

GENERAL CARPENTRY REPAIRS

Ron Lucke

CUSTOM BUILDING

(719) 346-8840
CELL: (719) 349-8840

Visit our Facebook page
Goodland Star News

The Goodland Star-News
SUBSCRIBER

Joe Bauman

You receive two free passes to see:

SAFE HAVEN (PG-13)

Clip and bring to the show. Non Transferable

SHERMAN THEATRE

1203 Main Avenue • (785) 899-6103

POST ROCK CATTLE COMPANY

Bull & Female Sale

MARCH 16, 2013 • 12:30 PM (CST)
Post Rock Cattle Company Sale Facility • Barnard, Kansas

200 GELBVIEH & BALANCER® LOTS SELL
120 Purebred Gelbvieh & Balancer® Bulls
80 Purebred Gelbvieh & Balancer® Females

HE SELLS!

SALE BROADCAST LIVE ON THE INTERNET www.dvauction.com

DVAuction
Broadcasting Real-Time Auctions

POST ROCK CATTLE COMPANY
3041 E. Hwy. 284, Barnard, KS 67418
Bill Clark: 785.792.6244
Leland Clark: 785.792.6208
Fax: 785.792.6250 • Email: prcc@twinvalley.net

"Where calving ease, performance and eye-appeal come together."

MMS
www.mms.bz 2262 C Avenue • Gladbrook, IA 50635

SALE MANAGEMENT BY:
Mitchell Marketing Service
Chris Mitchell 334-695-1371
Randy Sienknecht 319-290-3763

Your property taxes.
The roads you travel.
Our local water supply.
School finance.

No one covers the news that affects your life like your community newspaper.

your community. your newspaper.

The Goodland Star-News
We're *your* newspaper.

public notice

IN THE DISTRICT COURT OF SHERMAN COUNTY, KANSAS

WESTERN STATE BANK, Plaintiff,

vs.

JEFFERY S. SOPER, and THE BOARD OF COUNTY COMMISSIONERS OF SHERMAN COUNTY, KANSAS, the governing body of a Kansas municipality, Defendants,

Case No. 2012 CV 29

A Proceeding Pursuant to K.S.A. Chapter 60 (TITLE TO REAL ESTATE INVOLVED)

NOTICE OF SALE

Under and by virtue of an Order of Sale issued to me by the Clerk of the District Court of Sherman County, Kansas, the undersigned Sheriff of Sherman County, Kansas, will offer for sale at public auction and sell to the highest bidder for cash in hand, at the front door of the courthouse at 813 Broadway Avenue, Goodland, Kansas 67735, on March 26, 2013, at 10:00 AM, mountain time, the following real estate:

Lot Five (5), Block Fifty-Nine (59), in the Original Town of Goodland, Sherman County, Kansas.

Also known as: 1010 Main, Goodland, Kansas.

it satisfy the judgment in the above-entitled case. The sale is to be made without appraisal and subject to the redemption period as provided by law, and further subject to approval of the Court.

Burton Pianalto
Sherman County Kansas Sheriff

Prepared By:
Karan M. Thadani, #22771
JAMES M. MILLIKEN, CHAR-
TERED
101W. Washington, P.O. Box
627
St. Francis, Kansas 67756-
0627
(785) 332-2101 phone
(785) 332 2902 fax
kthadani@millikenlaw.com
ATTORNEY FOR PLAINTIFF

Published in The Goodland Star-News, Friday, March 1, 8 and 15, 2013

SUMMARY OF ORDINANCE NO. 1641

=On March 4, 2013, the governing body of the City of Goodland, Kansas passed an ordinance entitled:

AN ORDINANCE AUTHORIZING AND PROVIDING FOR THE ISSUANCE OF GENERAL OBLIGATION REFUNDING BONDS, SERIES 2013, OF THE CITY OF GOODLAND, KANSAS; PROVIDING FOR THE LEVY AND COLLECTION OF AN ANNUAL TAX FOR THE PURPOSE OF PAYING THE PRINCIPAL OF AND INTEREST ON SAID BONDS AS THEY BECOME DUE; AUTHORIZING CERTAIN OTHER DOCUMENTS AND ACTIONS IN CONNECTION THEREWITH; AND MAKING CERTAIN COVENANTS WITH RESPECT THERETO.

The Series 2013 Bonds approved by the Ordinance are being issued in the principal amount of \$1,935,000, to prepay an existing loan obligation of the City and to refund previously issued general obligations of the City, and constitute general obligations of the City payable as to both principal and interest, to the extent necessary, from ad valorem taxes which may be levied without limitation as to rate or amount upon all the taxable tangible property, real and personal, within the territorial limits of the City. A complete text of the Ordinance may be obtained or viewed free of charge at the office of the City Clerk, 1205 Main, Goodland, Kansas 67735. A reproduction of the Ordinance is available for not less than 7 days following the publication

date of this Summary at www.cityofgoodlandks.org.

This Summary is hereby certified to be legally accurate and sufficient pursuant to the laws of the State of Kansas.

DATED: March 4, 2013.

Jerry Fairbanks
City Attorney

Published in The Goodland Star-News, Friday, March 8, 2013.

Public Hearing for Conditional Use Permit

To Whom It May Concern and to all persons interested:

Notice is hereby given that at 5:00 p.m. MST, on March 28, 2013, the City of Goodland Planning Commission, at City Hall, 204 W 111h Street, Goodland, Kansas, will consider a Conditional Use Permit application to operate a Micro Brewery. The property to which the application applies is legally described and generally located as follows:

Case No. 2013-0001

Lots 17,18,19,20 and the fifteen feet of lot 21 in Block seventeen, in the C.K. and N Addition to the City of Goodland. More commonly known as 212 East 17th Street.

As provided in Article 11, Conditional Uses of the Goodland Zoning Regulations the above proposed conditional use permit will be discussed and considered by the Goodland Planning Commission, and all persons interested in said matter will be heard at this time concerning their views and wishes; and any protest against any of the provisions of the proposed Conditional Use Permit will be considered by the Commission. Property owners within 300 feet of such property described above, wanting to protest the proposed conditional use permit will have fourteen days after the Planning Commission makes its recommendation to the City Commission to submit a protest petition to the office of the City of Goodland City Clerk. If a valid protest petition is filed with the City Clerk prior to the deadline, the Conditional Use Permit shall only be approved by a unanimous vote of the City Commission. Protest petitions are available in the office of the Building Official for the City of Goodland.

Certified, this 6th day of March, 2013

Brian James, Building Official

Published in The Goodland Star-News, Friday, March 8, 2013.

IN THE DISTRICT COURT OF SHERMAN COUNTY, KANSAS FILED PURSUANT TO CHAPTER 59 OF THE KANSAS STATUTES ANNOTATED

In the Matter of the Estate of W J TRACHSEL, JR, Deceased

No. 09 PR 01

NOTICE OF HEARING ON PETITION FOR FINAL SETTLEMENT

THE STATE OF KANSAS TO ALL PERSONS CONCERNED:

You are hereby notified that a Petition has been filed in this court by Bonnie Trachsel, duly appointed, qualified, and acting Executor of the Estate of W J Trachsel, Jr, deceased, requesting that petitioner's acts be approved, account be settled and allowed; the heirs be determined; the will be construed and the estate be assigned to the persons entitled thereto; the court find the balances requested for administrator and attorney fees and expenses are reasonable and should be allowed; the costs be determined and ordered paid;

the administration of the estate be closed; and upon the filing of receipts the petitioner be finally discharged as the Executor of the Estate of W J Trachsel, Jr, deceased and the petitioner be released from further liability.

You are hereby required to file your written defenses to the Petition on or before the 1st day of April, 2013, at 9:00 o'clock A.M., on said day, in said Court, in the City of Goodland, in Sherman County, at which time and place said cause will be heard. Should you fail therein, judgment and decree will be entered in due course and upon said petition.

Bonnie Trachsel,
Executor

VIGNERY & MASON L.L.C.
214 E. 10th, P.O. Box 767
Goodland, Kansas 67735
Telephone: 785-890-6588
Attorneys for Petitioner

Published in The Goodland Star-News, March 8, 15 and 22, 2013.

IN THE DISTRICT COURT OF SHERMAN COUNTY, KANSAS FILED PURSUANT TO CHAPTER 59 OF THE KANSAS STATUTES ANNOTATED

In the Matter of the Estate of VERDA L SCHECK, Deceased

Case No. 12 PR 26
Petition Pursuant to K.S.A. 59

NOTICE OF HEARING

THE STATE OF KANSAS TO ALL PERSONS CONCERNED:

You are hereby notified that on the 6th day of March, 2013, a Petition was filed in this Court by Timothy E. Scheck, duly appointed, qualified and acting administrator of the Estate of Verda L Scheck, deceased, requesting that petitioner's acts be approved, the account be settled and allowed; the heirs

be determined; the estate be assigned to the persons entitled to it pursuant to the Valid Settlement Agreement; fees and expenses be allowed; cause be determined and ordered paid; the administration of the estate be closed; the sale of real property at private sale be approved; the administrator be ordered to issue appropriate deed; and the administrator be discharged and the petitioner be released from further liability.

You are hereby required to file your written defenses thereto on or before the 1st day of April, 2013, at 9:00 o'clock A.M. in the District Court of Sherman County, Kansas at which time and place the cause will be heard. Should you fail therein, judgment and decree will be entered in due course upon the petition.

Timothy E. Scheck,
Administrator

VIGNERY & MASON L.L.C.
214 E. 10th, P.O. Box 767
Goodland, Kansas 67735

Telephone: 785-890-6588
Attorneys for Petitioner

Published in The Goodland Star-News, Friday, March 8, 15 and 22, 2013.

Worship warms the heart

Calvary Gospel Church
Lead Pastors: Randy and Mary Payne
Assistant Pastors: Jacob and Ramie Soyez
Fourth & College • 890-3605
Sunday: Kid's Church: 8:30 and 10:30 a.m.
Morning Service: 8:30 and 10:30 am
Youth @ the Rock House, Sixth & Caldwell: 6:30 p.m.
Prayer and Praise: 5:00 p.m. except last Sunday of the month
Wednesday: Kids 4 Christ 6:30 p.m.
during school year
Life Groups - See website
website: www.calvarygospel.net
email: info@calvarygospel.net or see us on Facebook

Our Lady of Perpetual Help
Celebrant: Father Norbert Dlabal
307 W. 13th • 890-7205
Sacrament of Reconciliation:
5-5:45 p.m. Saturday or by appointment
Mass Schedule:
Saturday: 6 pm, Sunday: 10:30 am
Spanish Mass:
Sunday: 12:30 pm

Promiseland Baptist Church
Pastor: Rick Holmes • 890-7082
225 W. 16th
(785) 890-7944
Sunday: Sunday School: 10:30 a.m.
Morning Service: 11:30 a.m.
Evening Service: 6:30 p.m.
Wednesday: Bible Study Service
6:30 p.m.

Goodland United Methodist Church
1116 Sherman 899-3631
Pastors: Dustin and Shelly Petz
Saturday: Worship: 5:30 p.m.
Sunday: Adult Classes: 9:15 a.m.
Worship: 10:30 a.m.
Wednesday: Wednesday Nite Live (Sept. - May)
5:45 - 6:15 p.m. Simple Supper - All are welcome!
6:15 - 7:30 p.m. Worship and Classes for all ages

Pleasant Home Church
Serving the rural community
Celebrating 125 years of God's gracious blessings!
Rt. 1, Box 180 • 3190 Road 70
(785) 694-2807
Pastor: Perry Baird
Sunday: Worship Service: 9 a.m.
Sunday School: 10 a.m.

Church of Jesus Christ of Latter-Day Saints
1200 15th Street • Burlington, CO
(719) 346-7984
Sacrament Meeting: 10 a.m.
Sunday School: 11:15 a.m.
Priesthood/Relief Society: 12 a.m.

Iglesia Del Dios Vivo
La Luz Del Mundo
Spanish Speaking Church - translation available
Minister: Jose S. Lopez
1601 Texas • 899-5275
Daily Prayer: Sunday thru
Saturday: 5a.m. & 6 p.m.
Sunday: Sunday School: 9 a.m.

United Methodist Church Brewster:
Pastor: Mike Baughn
Worship Service: 10:45 a.m. CST
Sunday School: 9:45 a.m. CST
Winona:
Minister: Sheryl Johnson
Worship Service: 9 a.m. CST
Sunday School: 10:15 am CST

First Christian Church (Disciples of Christ)
Pastor: Rev. Carol Edling Jolly
Eighth & Arcade • 890-5233
Sunday: Church School - All ages 9 a.m.
Worship 10:30 a.m.
Youth Group: weekly Jr./Sr. High groups
Thursday: Prayer Class - Noon
Pastor Carol's Class Wednesdays 5:30 p.m.
www.goodlandfccdoc.org

Kanorado United Methodist Church
Rotating Pastors
399-2468
Sunday: Sunday School: 10 a.m.
Worship Service: 9 a.m.

Church of the Nazarene
Pastor: Bob Willis
Third & Caldwell
899-2080 or 899-3797
Sunday: Sunday School: 9:45 a.m.
Worship Service: 10:50 a.m.
Evening Service: 6 p.m.
Wednesday: Evening Service: 7 p.m.

St. Paul's Episcopal Church
Celebrant: Father Don Martin
13th & Center
Church 890-2115 or 890-7245
Services: 5 p.m. Saturday evening
Bible Study: 4 p.m. the first and third
Saturday of the month

Goodland Bible Church
109 Willow Road • 899-6400
Pastor: Chad DeJong
Sunday: Sunday School: 9:30 a.m.
Morning Worship: 10:45 a.m.
6 p.m. AWANA during school
Evening Worship: 7:30 p.m.
Wednesday: 6:30 youth group
Growth groups call for information
www.goodlandbible.org

First Baptist Church
Pastor: Travis Blake
1121 Main
890-3450
Sunday:
Coffee fellowship: 9:30 a.m.
Morning Worship: 10 a.m.
Sunday School: 11:15 a.m.

H2O Church.TV
Pastor: Craig Groeschel
109 E. 17th
(785) 728-0123
Experience Time
Sunday: 10:30 a.m.

Harvest Evangelical Free Church
521 E. Hwy. 24 • 890-6423
Pastor: Brian Fugleberg
Sunday: Worship: 10:30 a.m.
Sunday school: 9:30 a.m.
Wednesday:
Senior High: 6:30 p.m. at the church
Junior High: 6:30 p.m. at the church
www.goodlandefree.com

Seventh Day Adventist Church
1160 Cattletrail
Pastor: Jim McCurdy
Saturday: Sabbath School: 9:30 a.m.
Worship Service: 11 a.m.

Emmanuel Lutheran Church
13th & Sherman • 890-6161
Pastor: Darian Hybl
Sunday: Christian education/fellowship:
10:15 a.m.
Worship Service: 9 a.m.

Church of Christ
401 Caldwell
890-6185
Sunday: Bible Study: 9:45 a.m.
Worship Service: 10:45 a.m.
Wednesday: Bible Study: 7 p.m.

The following sponsors urge YOU to attend your chosen House of Worship this Sabbath:

Short & Son Trucking
Hwy. 24

Good Samaritan Center
208 W. 2nd

Goodland Star-News
1205 Main St.

KLOE/KKEJ/KWGB
3023 W. 31

WANTED
WANTED TO BUY: 110-112 John Deere Feeder Chuck Wagon, in fair condition. Call (785) 891-3761. -3-1-3-19-
WANTED TO BUY: 9'X5' pool table. Call (785) 891-3761. -3-1-3-19-

Junk batteries, non-ferrous metals and iron. Darrel Bowen. Phone 785-899-2578. -tfn-

PERSONALS
Man, looking to meet lady 50-60. I enjoy the outdoors, music, singing, dining out, drives, movies, yard sales, etc.. Am honest, faithful. Write K.G., PO Box 912, St. Francis, KS 67756 or call (785) 772-1186. -3-5-4-5-

NOTICE
A 1977 Ford Rat Rod with the VIN# 7A47S147038 will be sold at auction on March 15, 2013. The above named vehicle will be sold for storage and repair costs at S&M Repair, 1008 W. 17th, Goodland, KS 67735. Any questions please contact Drew Miller at (785) 899-5423. -3-5-3-12-

Gun and coin show, Colby Collector's Show. March 9 and

10. Saturday from 9 a.m. to 5 p.m. and Sunday from 9 a.m. to 4 p.m.. Community Building, Colby, KS. Admission \$3.00. Information call (308) 995-2258. -2-22-3-8-

American Profile Cookbooks Available! Stop by The Goodland Star-News. -tfn-

Advertising Deadlines (box and line ads): Tuesday edition (Friday at noon). Friday edition (Wednesday at noon). Please check your ad the first time it runs. If you find an error, please call us at (785) 899-2338 so it can be corrected, since we will not be responsible for errors after that first day. Thank you! The Goodland Star-News.

HELP WANTED
Accepting applications for Bagger/Warehouseman for agriculture business. Experience in grain elevator helpful. For interview call Sunrise Staffing Services, LLC @ (620) 792-1004 or pick up application at the Sun Opta Plant in Goodland. -3-5-3-15-

Stephens Construction, Inc. is accepting applications for full-time construction crew workers. Experience in steel &

or wood-frame building erection required. Concrete and other construction experience preferred. Competitive wages and benefits. Apply in person at 1260 S. Country Club Drive, Colby. -3-5-4-5-

The Cowboy Corner, LLC, 1631 Main, Goodland, KS. Looking for reliable, hard working individuals for a fast-paced work environment. Will work around availability; must be flexible to work nights and weekends. Competitive wages. Stop by and pick up an application at the store. -3-1-3-12-

Culligan Water Conditioning, Inc. has an opening for a Route Delivery/Service Tech person in our Goodland and Colby locations. Candidates must be reliable, customer friendly, be able to carry at least 50 pounds and have a clean driving record. All applicants are subject to background checks. Apply in person at 904 Main, Goodland, KS. -3-1-3-12-

Sherman County Health Department has a full time (32 hour) position open for a Registered Nurse. Sherman County Health Department offers competitive wages and county benefits. Requirements: Kan-

sas nursing license, be a self-starter, good problem solver, willing to travel when needed, average to advanced computer skills, program builder and a passions for patient education. Experience required. Apply at 1622 Broadway. Open until position filled. -2-26-3-26-

ASE Certified Technician. Up to \$5,000 sign-on/relocation bonus. Earnings based on knowledge, productivity, efficiency and attitude. Contact Jim at (800) 794-4675 OR jphilips62cox.net -2-26-3-26-

Venture Corporation is now taking applications for the Thomas County area for CDL class A or B drivers, equipment operators, laborers and flaggers. Apply at 214 S. Hwy. 281, Great Bend, KS, or call Leslie at (620) 792-5921. ventureoff@hotmail.com. Equal opportunity employer. -2-12-3-19

PSI Transport is always looking for good company livestock and grain haulers as well as shop mechanics. Competitive pay, life/health/dental benefits and bonus program available. EOE. (785) 675-3477. -6-10-TFN

BUSINESS FOR SALE

COMPLETE FITNESS CENTER! Changing Lifestyles, 13th & Main, Goodland. Contact Pat Howe at (785) 890-7512 or (785) 821-2389 for more information. -5-11-tfn

FOR SALE

Assorted Steel Buildings. Discounts available. Some seconds used. Erection information available. Will deliver. Source# 18X. 800-964-8335. -3-5-3-15-

2000 Chevrolet pick up truck. \$800 as is or best offer. Please call (785) 821-0384. -3-1-tfn

PICNIC TABLES AND YARD FURNITURE. Built out of treated lumber, very sturdy. Call (785) 443-1863. -2-15-3-15-

1998 4x4 Chevy Cheyenne 1500. 4.3L Vortec V-6, 237,170 miles, well taken care of, 5 speed. \$3,500. Call Rusty at (970) 630-1930. -2-1-tfn

2 - 12" Sony subwoofers and a 1000 watt amp for sale, box and wires are included, call 719-930-9031 in Goodland. -tfn-

FIREWOOD FOR SALE IN

GOODLAND. Call (785) 890-7224. -12-11-tfn-

ASHLEY FURNITURE TEMPUR-PEDIC BEDDING AT COLBY FURNITURE AND HOME STORE, COLBY, KS. (785) 460-6311. Website: www.colbyfurniture.net -10-21-tfn

FOR RENT

Nice 2 bedroom house in Goodland. Lease and deposit required. Non smoking. Call (785) 899-5041 or (785) 899-5866. -3-8-tfn

Houses and apartments in Goodland, KS. All sizes. Call for details. (785) 890-6538. -6-12-tfn

Houses and apartments. Cole Real Estate. 785-899-2683. -tfn-

SERVICES

CAT'S TNT for jewelry, vinyl graphic designs, massages, quilting and Fed-Ex and UPS shipping and more! Stop by 1018 Main, Goodland - 3-23-tfn

kansas classifieds

Adoption
 A childless, young, successful woman seeks to adopt. Will be HANDS-ON Mom! Financial security. Expenses paid. Jodi. 1-800-718-5516

Help Wanted
 "Can You Dig It?" Heavy Equipment Operator Training! 3 Week Hands On Program. Bulldozers, Backhoes, Excavators. Lifetime Job Placement Assst. w/ National Certs. VA Benefits Eligible - 866-362-6497

Help Wanted
 EARN \$500 A DAY: Insurance Agents Needed; Leads, No Cold Calls; Commissions Paid Daily; Lifetime Renewals; Complete Training; Health & Dental Insurance; Life License Required. Call 1-888-713-6020

Help Wanted
 "You got the drive, We have the Direction" OTR Drivers APU Equipped Pre-Pass EZ-pass passenger policy. Newer equipment. 100% NO touch. 1-800-

Good Pay, Great Benefits
 Bartlett Grain L.P. has year-round opportunities. We are looking for hard working **Yard Laborers** in Yuma CO, St Francis KS and Levant KS. You will be involved in both fertilizer and grain operations. Ideal candidate has ag background and CDL. HAZMAT preferred.

Bartlett offers competitive wages along with **GREAT BENEFITS:** Health and life ins. premiums paid 100% for employee, dental, vision, 401k w/company match, profit sharing, paid vacation, & more.

Apply in person or send resume: **Bartlett Grain Company, L.P.** North Benton, St Francis KS 67756 105 N Kamala, Yuma CO 81090 407 Bartlett, Levant KS 67743 For info: 800-860-7290 jobs@bartlettandco.com

EOE/AA/DF/Drug Screen/Background Checks

528-7825

Help Wanted/Truck Driver Drivers: Inexperienced? Get on the Road to a Successful Career with CDL Training. Regional Training Locations. Train and WORK for Central Refrigerated (877) 369-7885 www.central-truckdrivingjobs.com

Help Wanted/Truck Driver Exp. Flatbed Drivers: Regional opportunities now open with plenty of freight & great pay! 800-277-0212 or primeinc.com

Misc.
 AIRLINES CAREERS - Become an Aviation Maintenance Tech. FAA approved training. Financial aid if qualified - Housing

BLUEKNIGHT ENERGY PARTNERS
TRANSPORT DRIVERS WANTED
 Colby and Goodland Area

REQUIREMENTS:

- CDL w/Tanker & Hazmat Endorsement
- No Drug/Alcohol Violations in past 3 yrs
- No Serious CDL Moving Violations in past 3 yrs
- Meet all DOT requirements & pre-employment drug screen and background checks

BENEFITS:

- Competitive Pay
- 100% 401(k) Matching up to 5%
- Profit Sharing
- Health, Dental, RX, Vision, STD, LTD Benefits
- Drivers Safety Bonus Program
- Driver Referral Program
- Paid Holidays, Vacation, Sick Leave
- Updating Equipment & Paid Uniforms
- New Strong and Aggressive Company & more.

APPLY ONLINE:
www.bkep.com/careers
 or call 918-237-4047

HOG SLAT®
CONSTRUCTION SITE COORDINATOR/MATERIAL HANDLER

Hog Slat, Inc., is seeking a **Construction Site Coordinator** to manage materials on livestock facility construction sites in **Western Kansas.**

As **Site Coordinator**, you will be responsible for managing the inventory for these projects. You will work as a liaison between our distribution center in Guymon, OK and the contractors completing construction to ensure delivery schedules for construction materials are met and that crews have all materials they need to meet the construction schedule.

It is important that this **Site Coordinator** be detail oriented with a proven ability to complete projects within a specified time period. Applicants must have a valid driver's license and acceptable driving record. We offer a competitive salary, a full range of benefits, and a stimulating, challenging environment.

For more information or to apply for the position visit call **Bryan Hensley**

(620)482-1487 OR **Kevin Braden** (620) 202-2882 E.O.E.

available. Job placement assistance. Call Aviation Institute of Maintenance 888-248-7449.

Misc.
 ATTEND COLLEGE ONLINE from Home. *Medical, *Busi-

Sponsored by
The Goodland Star-News

1205 Main
 Goodland, Kan. 67735
899-2338

A	B	B	A		A	C	N	E		S	C	O	P	E				
M	A	U	L		F	L	E	D		T	A	L	E	R				
A	R	N	E		R	I	V	E		A	V	E	N	A				
H	I	G	H		D	E	F	I		N	I	T	I	O	N			
					O	A	S	T			R	U	T					
T	H	R	U	S	H		P	L	A	T	Y	P	U	S				
H	A	A	S			C	O	O	K	E		A	S	O				
R	U	L	E	D		R	O	T		S	A	R	A	N				
U	S	E		T	R	U	L	A		L	O	G	E					
M	A	S	S	E		U	S	E		S	T	E	L	E	S			
					E	R	E			A	N	E	W					
					F	E	D	E	R	A	L	H	O	L	I	D	A	Y
A	L	I	A	S		L	O	E	B		V	I	L	A				
C	A	R	T	E		C	R	A	B		E	V	A	N				
E	P	E	E	S		A	N	D	Y		S	A	N	K				

ness, *Criminal Justice, *Hospitality. Job placement assistance. Computer available. Financial Aid if qualified. SCHEV certified. Call 888-220-3977 www.CenturaOnline.com

Sponsored by
The Goodland Star-News

1205 Main
 Goodland, Kan. 67735
899-2338

5	2	9	7	3	6	8	1	4
3	4	1	2	9	8	6	7	5
7	8	6	1	5	4	3	2	9
6	3	4	8	1	5	7	9	2
2	5	8	4	7	9	1	6	3
1	9	7	6	2	3	4	5	8
9	6	5	3	4	7	2	8	1
4	7	2	5	8	1	9	3	6
8	1	3	9	6	2	5	4	7

Living with VISION LOSS?

If you've been diagnosed with macular degeneration, find out if special microscopic or telescopic glasses can help you see better. Even if you have been told nothing can be done you owe it to yourself to seek a second opinion.

Call today for a free phone consultation with **Dirk M. Gray, OD**
Toll Free: 877-393-0025 locations throughout Kansas

COLLECTOR CAR AUCTION
KANSAS CITY, MO
APRIL 25-27
 Kansas City Convention Center

750 VEHICLES

Interested in buying or selling?
 Contact a Mecum sales agent today!
MECUM AUCTIONS 262-275-5050
www.MECUM.com

10th ANNUAL OPEN HOUSE
 Join us in Richmond & Haven, KS
 Columbia, MO & Glenwood, IA
For the Lowest Prices of the Year!

Friday, March 15th 8AM-6PM
Saturday, March 16th 8AM-6PM
Sunday, March 17th 1-5PM

Refreshments will be Served Prizes and Giveaways All Day!

2012 NFBA Building of The Year

Residential
Equestrian
Agricultural
Commercial

QSI
 Quality Structures, Inc.

www.qualitystructures.com Like us on facebook

Call for FREE ESTIMATES
1-800-374-6988

Opening for TRUCK DRIVER

Required: high school diploma or equivalent, CDL with HAZMAT & Tanker endorsement, ability to operate a forklift. **Duties:** Deliveries, load and unload product, utilize a forklift, general warehouse duties.

Apply at Helena Chemical
6409 Road 25, Goodland, or call 785-899-2391

Excellent working environment, outstanding compensation & benefits. Pre-employment drug screening required. EOE M/F/V/H



What does **Self-Regulation** mean to Midwest Energy Members?

Join us for an informational meeting to learn the facts.

Great Bend Tuesday, March 26 @ 6:30 pm Barton Community College 245 NE 30 Rd Fine Arts Building, Room F30	Colby Thursday, March 28 @ 6:30 pm Colby Community College 1255 S. Range Ave. Student Union, Room 108
Scott City Tuesday, April 2 @ 6:30 pm Scott County Library 110 W. 8th St.	Hays Thursday, April 4 @ 6:30 pm Fort Hays State University Robbins Center One Tiger Place

Midwest Energy, Inc.
 1330 Canterbury Hays, KS 67601 Making energy work for YOU




www.mwenergy.com #MidwestEnergy

MORTON BUILDINGS, INC.

Farm Show Specials
Basic Farm & Ranch Storage
Mid-Am Farm Show, Salina - March 26-28

Size	Starting at
30' x 40'	\$13,983
42' x 60'	\$23,913
48' x 80'	\$30,646
60' x 120'	\$50,993

8 Offices Serving Kansas. Call your local Morton Buildings office today for details and to schedule an appointment.

Prices and availability vary by location. Pricing and products subject to change without notice. Offer ends 3/30/13. Photos may contain features not included in price. Certain restrictions apply. All transactions are subject to credit approval, applicable taxes and other terms. ©2013 Morton Buildings, Inc. Morton Buildings is a registered trademark. All rights reserved. A listing of GC licenses available at mortonbuildings.com/licenses.aspx. Ref 924.


800-447-7436 • mortonbuildings.com

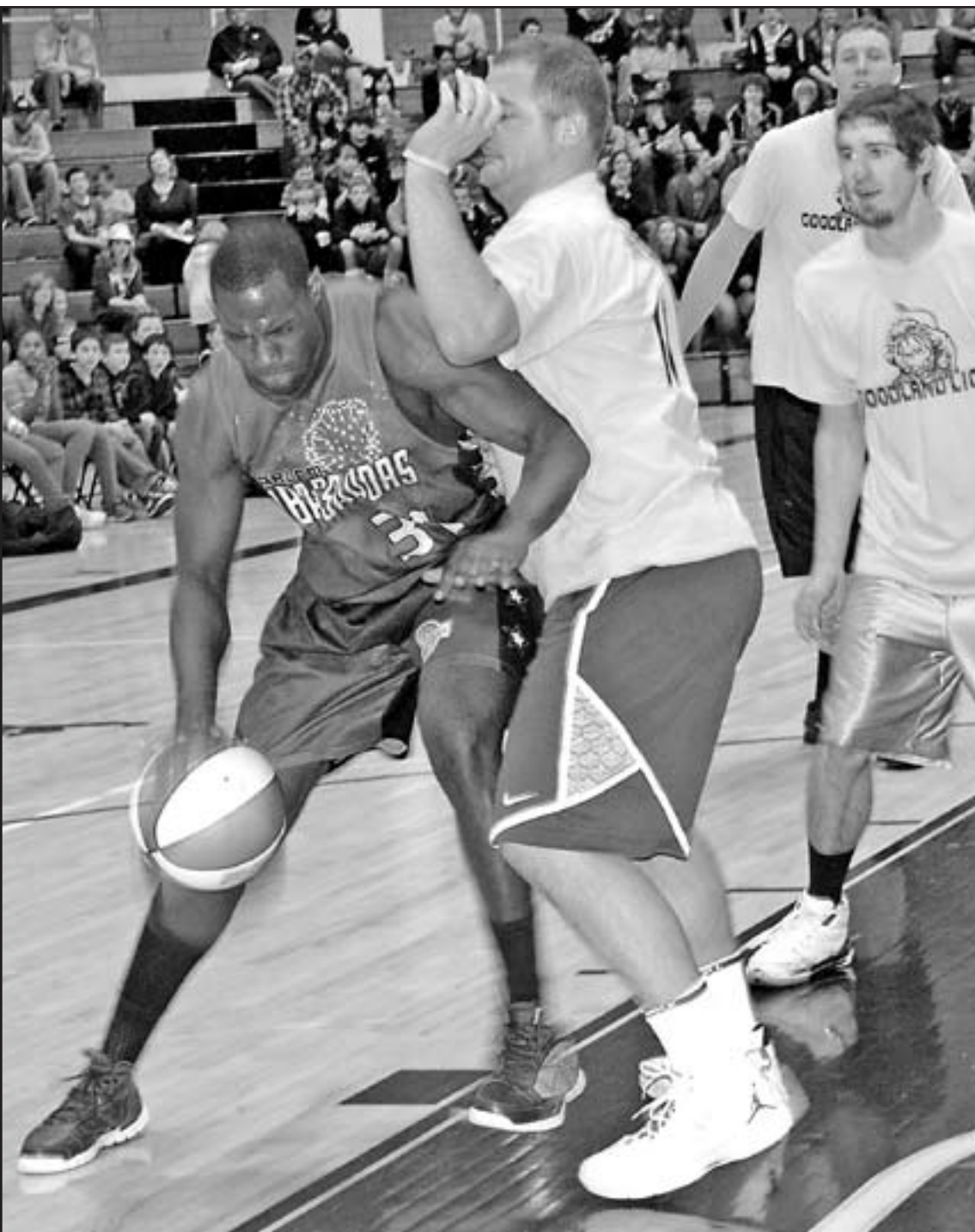
The Power of One.

—Juan, Kansas Credit Union Member

A credit union has one purpose...to make my financial life easier. As an owner, I feel the power because any profit a credit union makes comes back to me through higher earnings and lower fees.

KANSAS CREDIT UNIONS
kcuu.coop/PowerOfOne
 (800) 362-2076





Fun game night at the fieldhouse

The Harlem Ambassadors played a local team sponsored by the Goodland Lions Club on Wednesday night at the Max Jones Fieldhouse. The home team consisted of Bill Biermann, Brad Bergsma, Brent Flinders, Chase Topliff (right), Connie Livengood, Dixie Teeter, Don Raymer (top left), Jay Herl, Josh Simon, Julie Dautel, Kent Teeter, Mike Doll, Paul Flanders, Trevor Linton and Wade Taylor. The Ambassadors won 85 to 60. The show was not strictly a basketball game but a fun show with practical jokes and contests for kids (left). Members of the Ambassadors are Lade Majic, Nick Simpson, Alexander Wright, Jr., Cherie Huges, Selethia Jackson, Michael Hill, Jerome Robinson, Brandon Harris, Deon Huges II, Larry Pikes and announcers Aadam Keeley and Alvin Washington. Proceeds will be used for Lions community service programs including, eye screening, Genesis support, maintenance of a rural cemetery, erect and maintain shelters at Smokey Garden and at the Sherman County Fairgrounds, sponsor two Goodland High School band students, scholarships to graduating seniors and many more.

Photos by Pat Schiefen/The Goodland Star-News



We want your news tips and event notices

Call Kevin and Pat at: (785) 899-2338

or e-mail us at: star.news@nwkansas.com

RICK NEMETH

200 18 Mo. Old Registered Angus Bulls for Sale on Farm
75% of Bulls Are AI Sired
60 Bulls are ET Calves
Ludell, KS • (785) 626-4309 or (785) 322-5505

LOCATION: 13 miles northeast of Atwood, KS

Sale bulls are in top 3% of breed • Free Delivery & Boarding for both weaning and yearling weights.



EPD's BW WW MILK YW
.1 64 32 105



EPD's BW WW MILK YW
-1.0 62 20 106



EPD's BW WW MILK YW
5.2 61 23 133

SAV GRAND PRIX

SITZ TRAVLER 8180
SAVFINALANSWER0035 SAV EMULOUS 8145
BOYD NEW DAY 8005
SAV BLACKCAP MAY 7306 SAV BLACKCAP MAY 4136

FINAL ANSWER

SITZ TRAVLER 8180 G D A R TRAVLER 71
SITZEVERELDAENTENSE1137
BON VIEW BANDO 598
SAV EMULOUS 8145 SAV SKY EMULOUS 2124

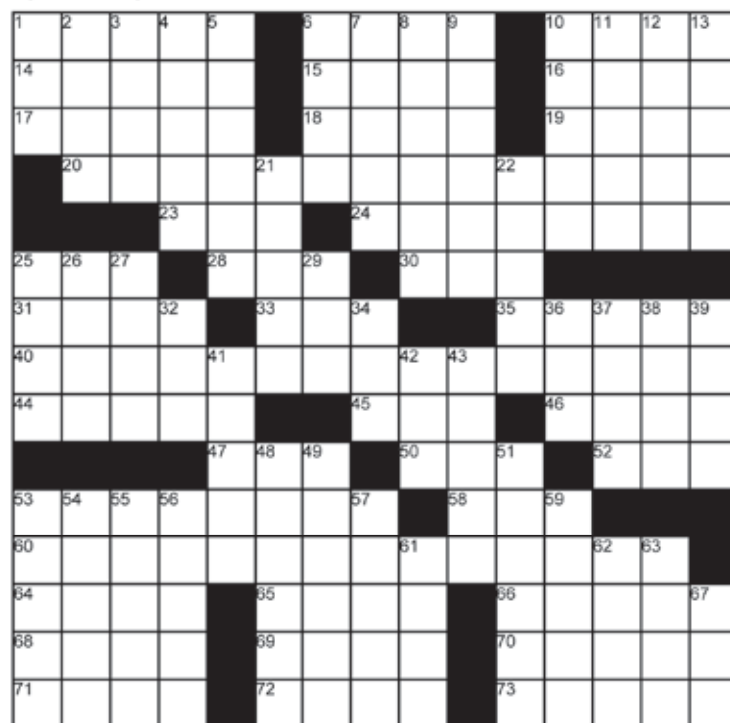
NICHOLS STOUT

NICHOLSCOMMITMENTK111
NICHOLSCOMMITMENTM380
NICHOLSBLACKHERESH295
NICHOLSBUSHWACKERK161
NICHOLS LULA N77 NICHOLS LULA K387

Crossword Puzzle

ACROSS

- Peace treaties
- School orgs.
- They're dubbed
- Martin's "That's ___"
- Lily Pons specialty
- Somali-born model
- Flat sign
- Cyber-browse
- Kilauea output
- Radio honcho
- Part of a royal flush
- Lamp fuel
- Murphy's ___
- LAX datum
- Diarist Anaïs
- Footnote abbr.
- Brazilian hot spot
- Dracula's title
- Orchestra honcho
- Lucy's pal
- Gay Nineties, e.g.
- Intro to marketing?
- Surgery sites, briefly
- Env. extra
- "Lenore" poet
- Treatment for the stressed-out
- Driver's lic. info
- School honcho
- Deliver a tirade
- List ender
- Lose tautness
- Director Preminger
- Khartoum's river
- Time on shore
- "In the headlights" animal
- Feeder filler
- Old anesthetic



American Profile Hometown Content

3/3/2013

DOWN

- Butter portion
- Cookie man Famous ___
- Revolver inventor
- Pick up the tab
- Parlor piece
- EI __, TX
- Mastodon feature
- B-29 crew
- Sightsee in the Serengeti
- Eliot's Marnet
- Publicist's concern
- Croaking bird
- Part of Ringo's kit
- IV part
- Time being
- Fruit for a twist
- Touch on
- Candle-blower-outer's thought
- Have the blahs
- Sputter and stall
- Shelley work
- Mo. to rake leaves
- Lone Star State sch.
- ___ contendere
- Alder or elder
- Circulatory problems
- Ill will
- "Amazing" magician
- Turns edible
- Bombing run
- Treat like a mama's boy
- New England catch
- Make jubilant
- "Inferno" poet
- Fur tycoon
- 1960 Wimbledon champ Fraser
- Flat hat
- Malamute's tow
- Genesis boatwright
- Carroll's "slythy" thing
- A pop

The crossword puzzle brought to you by:

FUN BY THE NUMBERS

			1			5
	9		8			
3			5	8		2
			4			1
9		3	2			4
	4					3
2	9				7	
			9		2	
4		6		5		

Like puzzles? Then you'll love sudoku. This mind-bending puzzle will have you hooked from the moment you square off, so sharpen your pencil and put your sudoku savvy to the test!

Here's How It Works:

Sudoku puzzles are formatted as a 9x9 grid, broken down into nine 3x3 boxes. To solve a sudoku, the numbers 1 through 9 must fill each row, column and box. Each number can appear only once in each row, column and box. You can figure out the order in which the numbers will appear by using the numeric clues already provided in the boxes. The more numbers you name, the easier it gets to solve the puzzle!

Level: Advanced

The Goodland Star-News

1205 Main, Goodland, Kan. 67735
(785) 899-2338