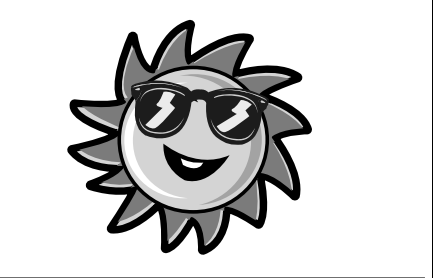


The Community Page

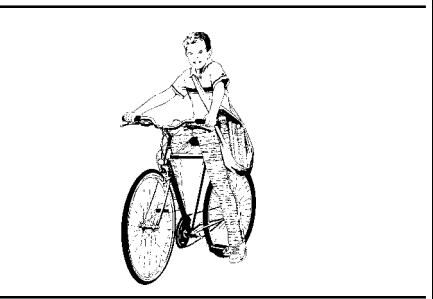


SHORT & SON INC.
SINCE 1934
Hwy. 24 • Goodland, Kan. • (785) 899-2592

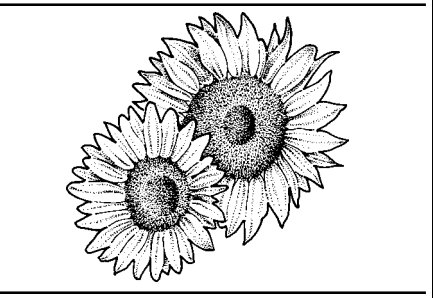



WESTERN STATE BANK
815 Center
Goodland, KS
(785) 899-2393

Your Ad
Could Be Here!
Call Mona
at 899-2338
The Goodland Star-News

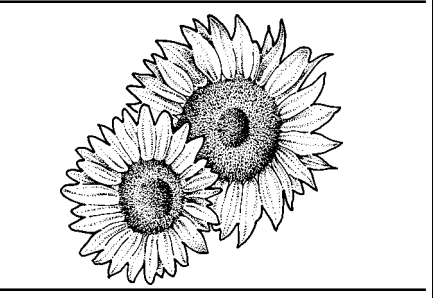


The Goodland Star-News
1205 Main
Goodland, Kan.
(785) 899-2338



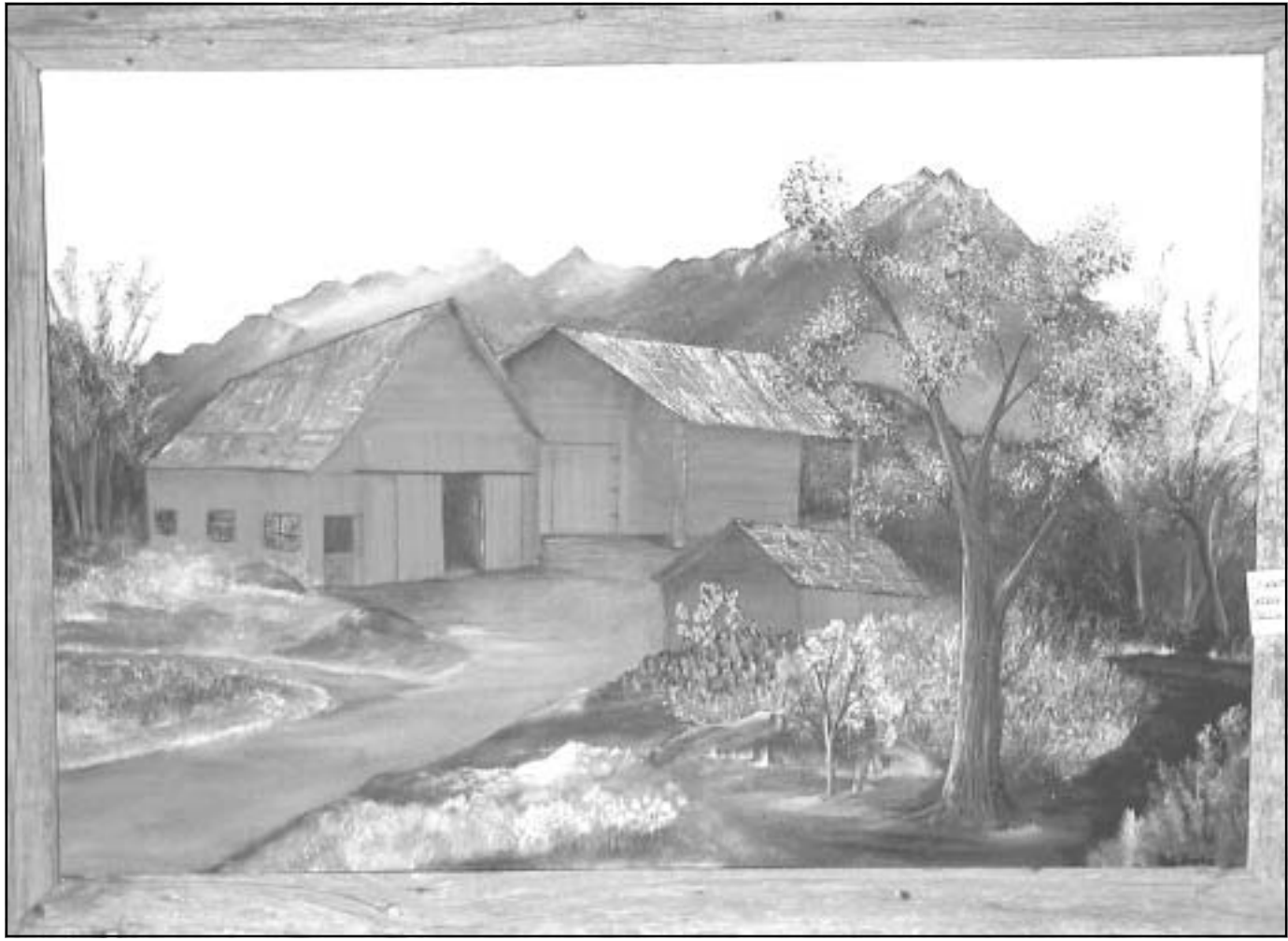
A Moment in Time Studio

Jan Thomas
217E 17th Goodland KS
(785) 899-6448 (785) 899-3992



Advanced Auto Body
403 E. 19th
Goodland, Kan. 67735
785-899-5555

Congratulations, school artists!



Among the works of student artists on display at the Carnegie Arts Center are an oil painting (top) by Kara Angelos, a high school student, a mixed media house (above) by Bryan Gray, a junior high student, a ceramic scene (right) by junior high artists Samantha Erickson and Chelsie Gausman and a pastel (below) by Tanner Oharra showing former Chicago Bulls teammates Scottie Pippen and Michael Jordan on opposite sides of the basketball.
Photos by Sharon Corcoran
The Goodland Star-News

High school art from league show, work from all junior high artists on display at Carnegie Arts Center

By Sharon Corcoran *The Goodland Star-News* Teachers are Mark Hagerman at the high school and Doug Peck at the junior high.

From a ceramic rose on a marble base trimmed with pearls, to sports stars drawn with "pastels," the high school and junior high work displayed at the Carnegie Arts Center showcases a range of talents and interests.

Among the clay designs displayed in the middle of the gallery are a ceramic corner of "Bedrock," complete with Fred and Wilma Flintstone and Dino, by Grant Junior High students Samantha Erickson and Chelsie Gausman; and a ceramic grasshopper by Tanae Garrett; a ceramic horse by Kaitlin Lee; and the ceramic rose by Shannon Showalter, all Goodland High School artists.

Panels arranged on the gallery floor display drawings of "dream home" rooms, tinted photos of Ty bears and mixed-media outdoor views of dream homes.

Brightly colored people with big shoes and big pants, music instruments carved in foil and a portrait of John Elway are among the displays on the walls.

Junior high students cut letters from construction paper and put them together in the design of what they spell, gluing them on construction paper. One such work, by Colton Nelson, has a person with the letters "HEAD" put together to make the head, and the letters put together for neck, shirt, pants, shoes and hands.

Another has clouds formed from the letters in the sky over a hill, a house and a pig, all formed from letters.

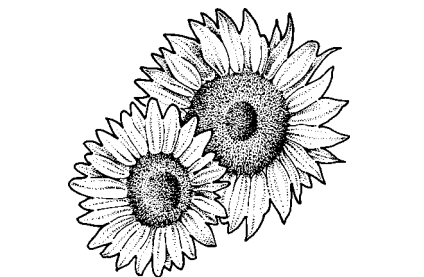
The high school sent over everything that had been entered in the league art show, said Tina Goodwin, director of the center. The junior high art includes things displayed at league, she said, and work from other students, so that all are represented.




FIRST NATIONAL BANK
202 E. 11th
Goodland, KS
www.fnb.com (785) 890-2000



Medical Arts Pharmacy
202 Willow Rd.
Goodland, Kan. 67735
785-890-5111



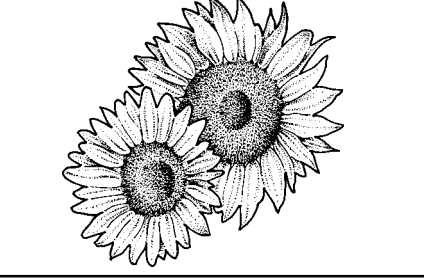
Northern Sun
(785) 899-6500

YOUR AD
could be here!
Call Mona
at 899-2338
The Goodland Star-News

KLOE 730am
Full Service Radio
102.5 FM KKCI
Best of the 70s, 80s, & 90s
KWGB 97.9

Lonny's Quality
Auto Body, Inc.
1933 Caldwell
Goodland, KS
(785) 899-6311

Your Ad
Could Be Here!
Call Mona
at 899-2338
The Goodland Star-News



CENTURY FEEDERS
6845 Rd. 17 • Goodland, Kan.
(785) 899-6515



Cobblestone Floral & Garden Center
508 E. 12th
Goodland, Kan.
67735
785-899-3663

Garcia's
Home Furnishings & Appliance
1114 Main
Goodland, Kan.
(785) 899-5123



Dependable Glass
1219 Main
Goodland, KS
(785) 899-6300

