

Cowboys face tough challenge tonight

The Goodland High School football team faces another tough challenge tonight as the Tigers of Ulysses High visit Cowboy Stadium.

The Tigers are 4-1 with a three-game win streak. Ulysses opened its season with a 20-14 win over Liberal, then a week later lost a close one to Hays High, a Class 5A school, 3-0.

Since then, the Tigers have been on a roll, beating Clearwater 73-0, Pratt 55-14 and, last Friday, Thomas More Prep-Marian 42-0.

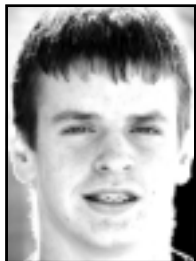
Cowboys coach Jon McLean said Ulysses may be Goodland's toughest opponent of the season.

"Ulysses has good speed in its backfield and good size up front,"

he said, "plus, they execute on offense really well. They don't do anything special, but what they do, they do well."

Ulysses is a member of the Mid-State League and is in a Class 4A district 16 along with Hugoton, Larned, and Scott City. Next year, Ulysses and Goodland will compete in the same district along with Colby and Hugoton.

The Tigers defeated the Cowboys



Linin



Kling



Goodman

34-20 last year in Ulysses. Both teams were 5-0 going into the game. Ulysses went on to finish the regular season 9-0, then won its first three playoff games before losing 27-22 to Rose Hill in the semi-finals. Six days earlier, Rose Hill had knocked Goodland out of the playoffs 30-12.

Back this season calling the signals for the Tigers is junior quarterback Johnny Sosa. Last week against Thomas More, he completed 6 of 15 passes for 104 yards and two touchdowns. Sosa also ran six times for 50 yards, scoring on a 9-yard keeper.

Junior running back Skylar Morales led Ulysses' ground attack, gaining 91 yards on 14 carries and scored on a 52-yard touchdown run. Senior tailback Trent Wieland picked up 75 yards on 18 carries. He scored three touchdowns against the Monarchs, two on the ground, and caught one of Sosa's scoring strikes.

In all, eight players combined for 309 yards rushing for the Tigers last

Friday.

Senior Scott Hilton had three receptions in the game for 67 yards and caught the Tigers' other touchdown pass.

The Ulysses defense has shut out two of its last three opponents. It held the Monarchs to just 44 yards rushing and 79 yards passing.

The Cowboys, on the other hand, have spent some of their practice this week working on problems that materialized against Oakley last Friday.

One set of adjustments Coach McLean has had to make was to replace seniors Wyatt Dautel and Jase Herl, both out with injuries. Dautel, the starting quarterback, has a separated right shoulder and will miss at

least one game. Herl broke a bone in his left foot last weekend playing basketball and is expected to be out at least two weeks.

McLean said junior Nathan Linin will step in for Dautel at quarterback and junior Jerrod Goodman fills in for Herl as the Cowboys' wingback. On defense, sophomores Tanner Smith and Jake Kling will step in to help fill the void.

McLean said controlling the ball will be the key against Ulysses. He said keeping the ball away from the Tigers' offense by sustaining long drives and scoring at the end of them will be the Cowboys' best defensive strategy.



Not this time!

Goodland's Tracy Weeter (right) demonstrated his bullfighting skills during this summer's "Thunder on the Plains" rodeo at the Sherman County Fairgrounds. Last month Weeter was named the Nebraska State Rodeo Association's Bullfighter of the Year. Weeter, a 1999 graduate of Goodland High, has worked for the Hudson Rodeo Company out of Sharon Springs for the past five years.

Photo by Ken Baum

Tabor plays Sterling Saturday

Tabor College and Sterling College both won their football games last weekend to remain undefeated, but something has to give Saturday when the two top-25 teams collide.

The Bluejays of Tabor, playing at home, beat Bethany College 38-7, improving to 4-0 overall and 3-0 in the Kansas Collegiate Athletic Conference. Tabor is ranked No. 12 in this week's poll by the National Association of Intercollegiate Athletics.

The Bluejays travel to Sterling to take on the Warriors, who are 3-0 for the season. Sterling defeated Bethel College 49-40 last Saturday in North Newton. The Warriors rose four spots to No. 20 in the poll this

week.

The Coyotes of Kansas Wesleyan University helped celebrate their homecoming last Saturday with a 32-14 victory over Ottawa University. The Coyotes travel to Winfield on Saturday to face Southwestern College, which even its record at 2-2 last weekend with a 28-25 win over Paul Quinn College (Texas) in a non-conference matchup.

In other games around the conference last weekend, Friends University defeated the University of St. Mary 26-2 and McPherson College edged Southwestern Assemblies of God University (Texas) 33-28 in a non-conference game.

The Swedes of Bethany take on

St. Mary Saturday for their homecoming game. Both teams are 1-3 for the season. The McPherson Bulldogs also play their homecoming game Saturday against Friends. Both at 3-1.

In non-conference matchups Saturday, Bethel heads south to face Southwestern Assemblies of God and Ottawa travels north to take on Peru State College (Neb.).

MidAmerica Nazarene University, a member of the Heart of America Athletic Conference, is the top ranked Kansas school in the national poll, moving up one spot this week to No. 7. The Pioneers are 3-1 for the season.

Golden Plains defeats Brewster in scoring demonstration, 74-70

By Jay Kelley

Colby Free Press

"They showed a lot of heart" was Brewster High School football coach Beau Sheets description of this team after an emotional 74-70 loss to cross-county rival Golden Plains last Friday in Rexford.

Sheets was understandably proud of his team, who came back from a 28-point deficit to give Golden Plains a scare in the final minutes.

Both teams lit up the field early. Brewster's passing game and Golden Plains running attack each promised a high scoring game early.

Golden Plains received first and opened with an eight-play, 52-yard scoring drive culminating in a 15-yard pass from Drew Stevenson to Alan Bruggeman — the only pass of the drive.

The conversion was good and Golden Plains took an 8-0 lead with 8:43 left in the first quarter.

A little over two minutes later, Brewster quarterback Branson Gilley found Seth Carpenter open in the end zone to cap another 52-yard drive in six plays.

The conversion failed, however, and Brewster trailed 8-6 with 6:38 left in the quarter. Failed conversions would come back to haunt Brewster.

Golden Plains came back to score on a three-play, 47-yard drive in just 48 seconds. Ryan Stevenson carried the ball in from the 5 and Drew

Stevenson carried the conversion for a 16-6 Golden Plains lead.

Brewster's next drive also ended in a touchdown when Gilley found Carpenter again for a 49-yard touchdown on third and five with 4:13 left in the quarter. Again the conversion failed and Brewster trailed 16-12.

Golden Plains made it 24-12 when Dan Rogers rambled 13 yards into the endzone with 2:48 left in the quarter. Golden Plains' conversion was successful again.

Scoring in the first quarter wasn't done, though. Brewster's first play from their 27 was a 24-yard pass to Karman Selby which set up first and 10 on the Golden Plains 30.

Four plays later, Brewster found themselves on the six-yard-line at first and goal. Andrew Starns carried the ball across the goal line with 21 seconds left in the quarter to cut the Golden Plains lead to 24-18.

The second quarter began with three straight scores by Golden Plains. The first was a six-yard carry by Dan Rogers that made it 32-18 with 11:42 left.

The second was set up by a failed longshot by Brewster, which went for the first down on fourth and 16 at their 28. A Gilley pass to Kyle O'Connor was incomplete and Golden Plains took over on downs. Ryan Stevenson then ran 28 yards into the endzone.

The conversion was successful

and Golden Plains led 38-18 with 9:25 left in the half.

Brewster was forced to punt on their next possession and a reverse gained Stevenson another 50 yards and a touchdown for a 46-18 lead with 7:25 left in the half.

Brewster came back with back-to-back scores of their own, however, starting with a 60-yard touchdown pass from Gilley to Selby less than a minute later. The conversion was successful.

Golden Plains was stymied on their next possession, but managed to pin Brewster back on their 11. The response was a 69-yard drive ending in a 26-yard touchdown pass from Gilley to Carpenter.

The conversion was successful again and Brewster had cut the lead to 46-34 with 3:22 left in the half.

The final score of the half favored Golden Plains: a Kyle Spresser run from mid-field with 33 seconds left. The conversion failed and Golden Plains took a 52-34 lead into half-time.

Brewster again cut the lead on their first drive of the second half. Starns carried from the one for his second touchdown and the second of three total rushing scores. The conversion was good and Golden Plains led 52-42 with 10:29 left in the third quarter.

For nearly four minutes, it seemed as though both teams had finally finished scoring, but they were just

reloading. Golden Plains broke the drought with a 30-yard run by Drew Stevenson with 6:44 left. The conversion failed and the score was 58-42 Golden Plains.

Brewster scored again on a Gilley-to-O'Connor pass with 22 seconds left in the third. The conversion failed and the third quarter ended with the score 58-48 in Golden Plains' favor.

Golden Plains made it 66-48 early in the fourth quarter on a 25-yard carry by Dan Rogers with a successful conversion just 1:08 into the final period.

Brewster came right back with an eight-play drive — three inside the 10 — which ended with a Gilley run into the endzone from the 4. The conversion was good and Brewster trailed by 10 with 8:23 left in the game.

Brewster tried an onside kick, which failed, but their defense forced Golden Plains to punt. Their drive ended on the Golden Plains 15 when Ryan Stevenson intercepted a Gilley pass and returned it to the 37.

Brewster's next touchdown was credited to the defense when Starns recovered a fumble behind the line of scrimmage and outran everyone 60 yards to the endzone. The conversion was good and Brewster trailed 66-64, but there were only 56 ticks left on the clock.

Golden Plains scored again on

the first play of the drive, a 47-yard romp by Ryan Stevenson, but Brewster wasn't done.

The final score of the game came with only 16 seconds left. Gilley went to O'Connor for 65 yards. The conversion failed, as did an onside kick, and Golden Plains wisely chose to down the ball for two plays to run out the clock.

Brewster had a phenomenal 480 passing yards. Gilley was 22-for-41 with six touchdowns and an interception. O'Connor had 290 yards from 14 receptions and two touchdowns. Selby had 101 yards on four receptions with a touchdown and Carpenter had three receptions — each for a touchdown — for 86 yards.

Brewster's rushing game netted 107 yards with Gilley again leading. He had 80 yards on 24 carries and a touchdown. Starns had 27 yards on seven carries and two touchdowns.

Gilley had 11 tackles and seven assists. Starns had 10 tackles, eight assists and a 60-yard touchdown off a fumble recovery. Carpenter had seven tackles with two assists. Cory Grantz and Selby had four tackles and two assists each. Tyler O'Connor had three tackles and an assist. Chris Williams and Kyle O'Connor had a tackle each. O'Connor also had an assist.

Brewster's next action is at home against Wallace County High of Sharon Springs at 7:30 p.m.

bowling results

Monday Afternoon Ladies League October 3	Team Standings
Callahan's over Wheatridge Farms, Ltd. 3-1 Bowladium Lanes over Medical Arts Pharmacy 3-1 Clawson Electric over Alcorn/Shelter Insurance 3-1 Lonny's Quality Auto Body over Ginn Masonry 3-1	No. 1 Lonny's Quality Auto Body 17-7 No. 2 Bowladium Lanes 15-9 No. 3 Alcorn/Shelter Insurance 14.5-9.5
High Individual Game: Jeannie Pyles 215 High Individual Series: Lori Amthor 587 High Team Game: Lonny's Quality Auto Body 3-1 High Team Series: Bowladium Lanes 1,899	

ENJOY
TONIGHT AT THE MOVIES
AT THE MOVIES

The
Goodland Star-News

SUBSCRIBER

Ed Flodin

You receive two free passes to see

Wallace and Gromit
The Curse of the Were-Rabbit
G

Sherman
1203 MAIN - Phone 899-6103

Present Ticket at Box Office
Tickets are Non-Transferable

**Non-surgical treatment
of hemorrhoids.**

John D. Ferris, MD
will be at:
291 15th Street
Burlington, CO

**Wednesday
October 19**

For information
or appointment, call
1-800-593-0009

**Hem
cure**

Residential Real Estate - Farm and Ranch
1020 W. 13th
This home features a wood-burning fireplace in living room, new carpet, paint and lighting in the basement. Laundry is available in the basement or upstairs. Situated on a corner lot this home has underground sprinklers and a single car attached garage.

See our other fine listings:

1320 Syracuse	301 Willow (Price Reduced)	1528 Colorado
1502 Caldwell	521 W. 10th	1506 Broadway
408 W. 11th	417 W. 15th	222 W. 9th
226 Sherman (SOLD)	615 W. 10th	1019 Caldwell
1521 Kansas	1311 Clark	Commercial
801 Harrison	802 E. 5th (UC)	1111 Main
912 Broadway	121 W. 12th	516 W. Hwy 24
709 W. 13th (SOLD)	301 Center	Lots
520 E. 16th	411 Washington (UC)	116 N. Clark
1004 Montana	2810 Commerce - Lot 22	1609 Caldwell
1525 Center	5450 Cty Rd 9	Toelkes and Broadway
607 W. 12th	811 Washington (UC)	Kanorado
412 Sherman	1506 Center	208 Beech
605 College	719 Sherman (U C)	310 Rule
901 Cherry	210 E. 6th (Price Reduced)	St. Francis
1607 Broadway (UC)	222 Sycamore	422 S. Adams
104 Broadway	416 W. 9th	Oakley
904 W. 16th	835 Grandview (UC)	423 Converse
619 W. 11th	2505 Rd. 64	Winona
709 College (SOLD)	1532 Grand (Exclusive)	303 Hawley (Price Reduced)
1106 College	1315 Texas	207 Front (Price Reduced)

Call Joyce to look at any of these fine houses.

115 E. 9th • Goodland, Kansas
jbboc@st-tel.net
www.joneslandco.com • (785) 899-0500
Robert Jones/owner/broker • (785) 899-6135
Joyce Boehme/associate broker • (785) 899-3548

We now have over 300 steering brackets to fit all major equipment manufacturers, including John Deere, New Holland, Agco, and others. We also have sprayers of all makes. Come see us for all your EZ-Steer needs or to view a demo on how the system works.

Assisted steering that puts you right on the line.

The Trimble® EZ-Guide® Plus lightbar with the new Trimble EZ-Steer™ system.

- Affordable and flexible lightbar and assisted steering combination
- Hands-free, 6 to 12 inch pass-to-pass accuracy
- Reduces operator fatigue and improves productivity
- Easy to install
- No hydraulics needed
- Works on vehicles with power steering!

Trimble
Trimble Agriculture. The line everyone follows.
www.ez-guide.com
www.ez-steer.com

Witzel & Rhea Imp.

118 N. Gardner Sharon Springs, KS 785-852-4235	124 W. Hwy 24 Goodland, KS 785-899-3432
--	---

© 2005 Trimble Navigation Limited. All rights reserved. Trimble, the Global & Triangle logo, and EZ-Guide are trademarks of Trimble Navigation Limited registered in the United States, Europe and other countries. EZ-Steer is a trademark of Trimble Navigation Limited. 116-00001-01-05