

Storm blast closes all roads, strands hundreds

STORM, from Page 1a

hotels filled up in Limon and traf-
fic was cut off just east of Denver.

The armory was the first shelter
opened in Goodland, about 3 p.m.
Sunday, but blowing snow made
traveling Caldwell and Armory
Road difficult. The hall was filled
by late afternoon with about 174
people.

Other shelters were opened Sun-
day afternoon, with the Goodland
Activities Center crowded with about
80 people, about 140 at the Method-
ist Church and 165 at Max Jones.

As the sun went down, city police
and volunteer firemen began taking
blankets to those at the shelters. The
Red Cross was able to furnish 50, and
blankets came from the Methodist
Church as well as some from the
Kansas Highway Patrol and the Sher-
man County Ambulance Service.

Wal-Mart donated some food and
bottled water, and arrangements
were made to take breakfast to the
shelters Monday morning. Presto
donated some bottled water and
pop. The Salvation Army helped
pay for the food for those sheltered
at the Methodist Church.

There were some dogs at Max
Jones and at least two of the other
shelters. A police officer made the
rounds with dog food and water for
the pets.

As long as the power held out,
there were coffee machines at the
Methodist Church and a microwave
at the Fieldhouse.

Northwest winds caused poor
visibility, and the Kansas Depart-
ment of Transportation closed K-27
south of Goodland about 4 p.m. on
Sunday. It was closed north to
Wheeler also.

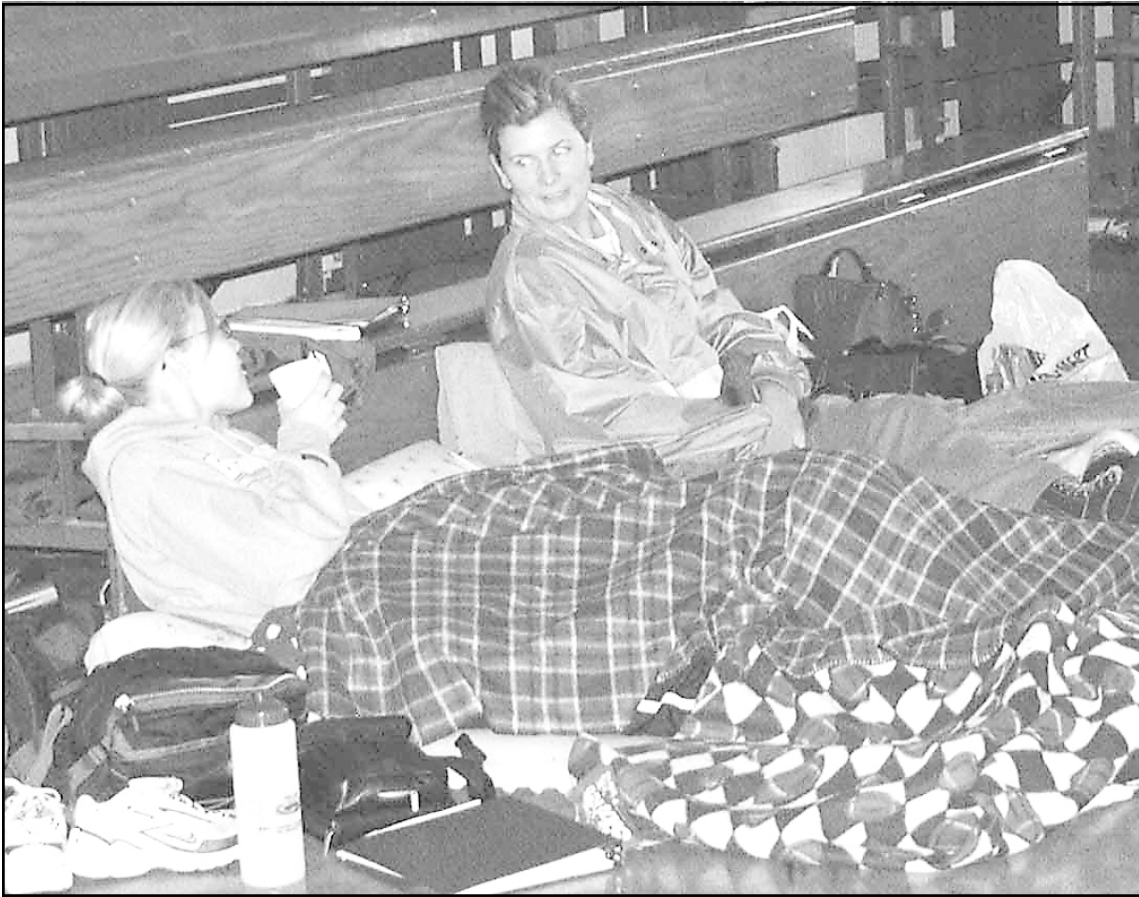
U.S. 36 was closed across Kan-
sas as far as Norcatur, and as far
west as Cope, Colo. U.S. 385 was
closed from Cheyenne Wells north
to Idalia and U.S. 40 was closed
from Oakley to Limon.

All of the roads reopened by mid-
morning Tuesday. K-27 south was
opened before I-70, and K-27 north to
Wheeler was the last highway
opened, officials said, because the
priority was getting U.S. 36 open
from Norcatur to the Colorado border.

Wind gusts Sunday were re-
ported as high as 67 mph at Burling-
ton and 63 in Goodland. Blowing
snow was causing blizzard condi-
tions and the weather service re-
ported an accumulation of 3.1
inches of snow through Monday.
There was .18 of moisture in the
snow on Sunday and .09 on Mon-
day. The snow brought the moisture
for November up to .78, and the to-
tal for the year to 15.96.

A patrol officer and a deputy sher-
iff were asked to go south on K-27
on Sunday afternoon to locate
stranded motorists. Several ve-
hicles were off the road, but the bliz-
zard made it nearly impossible for
the officers to find the people. One
missing motorists was later found
in Limon, where they had followed
a state snowplow.

Monday afternoon it got a bit
more serious for those at the shel-
ters when Wal-Mart was without
power and unable to furnish any
meals. Pizza Hut was doing a great



Amber Knudsen (right), her sister-in-law (hidden under the blankets) and the sister-in-law's friend
tried to stay warm Monday morning while waiting for the roads to open so they could head home to
Salt Lake City.
Photo by Sharon Corcoran/The Goodland Star-News



The weather Sunday looking south at Central Elementary School. Visibility was very limited due to
wind and blowing snow.
Photo by Pat Schiefen/The Goodland Star-News

business. They were taking orders
for pickup in the early afternoon,
and they were delivering what they
could. Gambino's was open, but
were not delivering. McDonalds
was open, as was Wendy's.

Phones that depend on electricity
were out, and many places could not
be reached by phone.

Eagle Cable was off for a part of
the day, but S&T Communications
continued to operate as much as
possible. Radio KLOE/KKCI/
KWGB was having power prob-
lems and the FM stations were off
the air.

At 2 p.m., the west bound lanes
of I-70 were being opened basis
from Burlington to Denver. The
Colorado Department of Transpor-
tation was escorting convoys of cars
from Burlington to Siebert, where
there were six-foot drifts.

The National Weather Service
forecast was for high winds and
blowing snow until 5 p.m. Monday
with winds diminishing during the
evening and the temperatures drop-
ping into the teens. The low Mon-
day was 16 degrees, and the wind

had dropped to 15 mph. The fore-
cast for Wednesday is mostly
cloudy with a 20 percent chance of
snow, highs in the mid 30s and low
around 15.

In a note from weather history,
the weather office reported that
Monday was the anniversary of a
three-day snow storm that swept
through the area in 1983. Winds in
that storm had gusts up to 63 mph
and closed highways in northwest
Kansas and eastern Colorado.

People huddle, play at Fieldhouse, school

STRANDED, from Page 1a

his sister and her friend. They were
on their way home from
Bartlesville, Okla., after visiting his
family when the storm hit.

"We were going to leave Satur-
day," Kenny said, "but we just had
to have that extra day."

The weather was so nice Satur-
day, in the 80s in Oklahoma, they
never dreamed snow would stall
their trip home. Nonetheless, they
kept a positive attitude.

"We were so tired, it wasn't too
bad staying overnight," Amber
said.

"It's nice of the town to do this for
us," Kenny added. "We're really
appreciative. We'd be in our car."

Sunday, the Knudsens spent
seven hours at Wal-Mart, from 3
p.m., shortly after they arrived in
Goodland, until 10 p.m., when they

found out they could stay at the
fieldhouse.

There weren't any motel rooms
left, Amber said, adding that she had
called motels in Burlington and
around the area. Nothing was avail-
able at all.

They heard the National Guard
Armory had been opened for trav-
elers, but that it was full and the road
to get there was closed. They en-
joyed cookies and hot chocolate at
Wal-Mart and bought cards and
games to pass the time, but they
knew when the store closed at mid-
night, they would be out in the cold.

Then they heard about the field-
house and got a map from people
working at Wal-Mart. They had a
new refuge and soon had dinner.

The police and fire departments
brought sandwiches Sunday night,
the Knudsens said, and then dough-
nuts and juice this morning.

ZYPREXA® ALERT

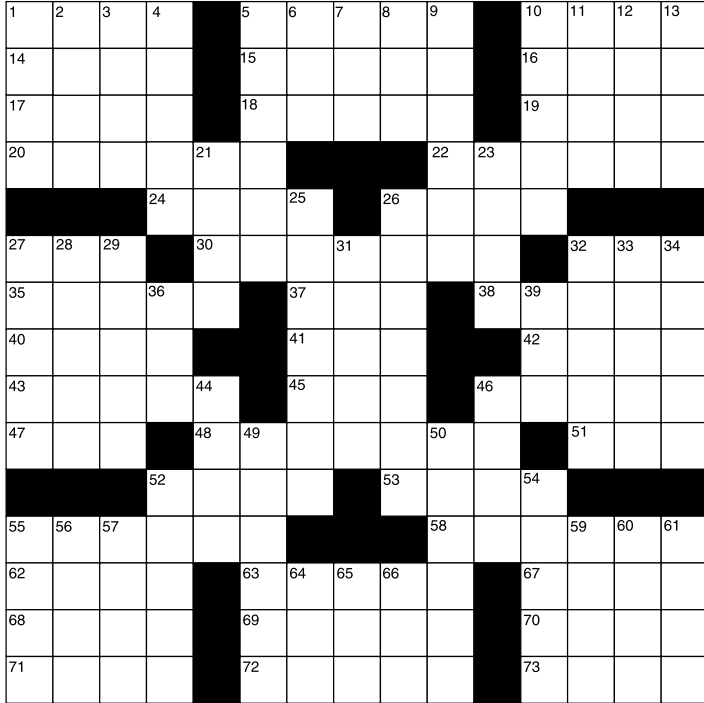
Scientists report that ZYPREXA® (Olanzapine) has been associated with developing **Diabetes, Diabetic Coma, Ketoacidosis, Hyperglycemia, Pancreatitis and/or Death.** As a result the manufacturer has announced a **proposed settlement.** Call us today toll free at 1-877-746-4369 to discuss your potential ZYPREXA® claim.


THE FOX LAW FIRM, P.C.
WWW.FOXLAWFIRM.COM

1-877-RING-FOX
Principal Office—Dallas, Texas.

Consult your physician before discontinuing any medication. Zyprexa® is a registered trademark of Eli Lilly and Company.

Crossword Puzzle



CLUES ACROSS

- Compartments
- Twines together
- Supernatural force
- Chinese dynasty
- Derive
- Chemical sprayed on fruit trees
- Of an ode
- NCO
- Such as wood down a river
- Nut trees
- A way to tranquilize
- A way to flow
- Dried leaves of the hemp plant
- Printing speed measure-ment
- Shoreline
- A young canine
- Riding horses
- Diego, Francisco, Anselmo
- Dutch scientist, van der

- Place restrictions on
- Mainframe
- The goddess of the moon
- Establish by law
- Belongs to him
- Shrub
- Drench
- The academic world
- Makes computers
- Soviet city
- Replete
- Favre, for one
- Designates
- Turkish title
- Foots
- Semitic fertility god
- A light two-wheel carriage
- A member of the ancient Greek school of philosophy
- This (Spanish)
- Uralic language
- A way to behave
- Bleached

CLUES DOWN

- A way to emit sound
- Acts as military assistant
- Spoken in the Dali region of Yunnan
- Soul and calypso songs
- Leaseholder
- Oklahoma city
- An inferior dog
- Records electric currents
- In a way, flowed
- Andressen and Connelly
- Jai __, sport
- __ off, dismiss angrily
- Creative
- Strip of land projecting into a body of water
- Again
- The lamb sacrificed at the first Passover
- Bodily cavities
- Horse
- Cut back
- Murdered in his bathtub
- Tasty
- Sao __, city in Brazil
- Forearm bones
- Hymn
- London network
- Flower petals
- Empty container used as a counterweight
- Stalk of a moss capsule
- Purplish red
- Malevolency
- Similar to the giraffe
- In a way, pulled away
- Dabs
- North-central Indian city
- Tartar ruler
- Cushy
- Tardy
- Sleigh
- Cash dispenser
- Characteristic of bovines
- The cutting part of a drill

The crossword puzzle brought to you by:



dine-in
carry-out
delivery

1803 Cherry
Goodland, Kan.
67735
899-3661

Wind causes power outages

POWER, from Page 1a

feed mainly from Sunflower.

"We are back on Sunflower and
generating part of our needs be-
cause of a breaker failure at the
plant. We are running a split system,
and generating what we can."

The downtown area and Wal-
Mart were without power from 11
a.m. to 7 p.m. Monday, and that
forced people sheltered in the Meth-
odist Church and Goodland Activ-
ity Center to be moved to the High
School.

Without power, many businesses
did not open on Monday, and *The
Goodland Star-News* was unable to
run its presses, and sister papers *The
Colby Free Press* and *The Norton
Telegram* were delayed as well.

Blake said the main loop from the
power plant did not go down after
the original outage on Sunday.
"If you were lucky to be on the old
loop, the power stayed on because
the power plant was generating,"
Blake said.

Blake said places like Golden
West, the National Weather Ser-
vice, the City Administration Build-
ing, the sheriff's office and hospital
were running off generators.

He said the city would have to
repair some switches on the south
loop Tuesday, and they would have
to switch the load to get off Sun-
flower to allow the city line crews
to work on the equipment. He said
some metering equipment had to be

replaced to allow the two systems
to be joined again.

He was hoping that would not
mean any outages, but that it would
be possible there might be an inter-
ruption of about 30 minutes while the
work is being done on the south loop.

Wayne Hill, city manager, who
had gone to Guymon, Okla., for
Thanksgiving, found himself
stranded in Sharon Springs on Sun-
day and arrived back in the city
about 8 a.m. Tuesday.

"The guys did a yeoman's job,"
Hill said. "It was tough being out in
60 mph winds trying to fix poles and
transformers.

"Mother Nature can hand you a
hammer sometimes, and this is
what happened. They did a wonder-
ful job getting things up as soon as
possible.

"All the crews worked hard and
did an excellent job. I am extremely
proud of all the crews who helped
out, and the mayor was helping
handle the phones at the power
plant."

Hill said after he got back to the
city he heard an e-mail being read
on Fox News from someone who
had been in Goodland.

"The message was that the people
were real friendly," Hill said, "and
that Goodland did not need FEMA
(Federal Emergency Management
Authority). They could take care of
everybody.

"I thought that was a good mes-
sage and a boost for the city.

Brewster All-Star Booster Club

Calendar for Nov. 30 - Dec. 6

Wednesday - Western Kansas Liberty League Scholrship Test at
Weskan, 10 a.m.

Thursday - Junior High basketball game in Brewster against
wallace Co., 3 p.m.; Scholar's Bowl at Atwood, 4 p.m.

Friday - Basketball in McDonald against Cheylin, 6:30 p.m.

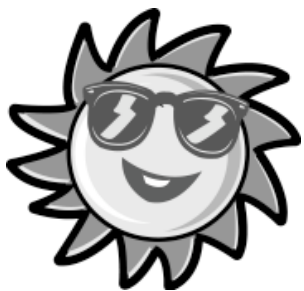
Monday - Junior High Scholar's Bowl at Tribune, 4 p.m.; High
School Scholar's Bowl at Colby, 4 p.m.

Tuesday - Sagebrush Shootout at Brewster, 3 p.m.



1205 Main
Goodland, KS
(785) 899-2338

Check our On-Line Site
at nwkansas.com



102.5 FM KKCI
Best of the 70s, 80s, & 90s

KWGB
97.9

KLOE 730am
Full Service Radio



USD 314
Wishes the best to ALL
Brewster Students!
Go Bulldogs!