

New museum plan unveiled, \$1 million to be raised

By Sharon Corcoran

The Goodland Star-News

The High Plains Museum is bursting at the seams, and the solution, a new \$3.5 million museum, is in the works, but donations are needed before the project can get grants to help.

Land was left to the city for a new museum in a trust. An artist's conception has been drawn of the outside of the museum, its floor plan and where it will be placed on the new site.

Now the museum needs to raise over \$1 million, one-third of the cost, to be taken seriously when applying for grants to help with construction.

Linda Holton, director of the museum, gave a presentation on what the new museum will provide and why it is so badly needed at the Sherman County Historical Society's annual meeting Saturday. She unveiled floor plans and drawings of the exterior and two entrances to the proposed structure.

Aside from a lean budget, she said, the museum hadn't faced problems until now. There is no room to change exhibits, she said, and the museum has been renting off-site storage the last seven years. Having so many artifacts in storage puts the museum in a bind when more are offered.

"We can't keep accepting things with no place to put them," Holton said, "but we can't be a museum and turn down artifacts."

Having no room to grow, the museum will stagnate, causing its demise, said, Hugh Edmondson, owner of Hugh Edmondson Conservation Services in Kansas City, Mo., in his report on the museum.

The High Plains museum was built in 1959 by Rhoads Construction, Holton said, and has been filling up with artifacts for 45 years.

By 2002, the museum board was looking for a new site, she said, a place that could be renovated. Everything they found, she said, was either not a good location or had no parking space.

Around that time, Holton said,

the Sandy Trust left the city about 14 acres with stipulations that it be used for a new museum.

The trust set the deadline to begin construction by January 2005, she said, but the museum got an extension of three more years. Construction needs to start by December of 2007.

If construction doesn't start by then, Holton said, there is a very real possibility the museum will lose the opportunity for that land. It's a prime location, she said, right off the Interstate near the east exit to the city.

The museum draws 3,000 to 5,000 tourists a year, she said, which will at least double when it's right off the freeway. Moving the museum there will be really good for everyone here, she said, since it will draw people into Goodland and will open up opportunities for expansion at the east exit.

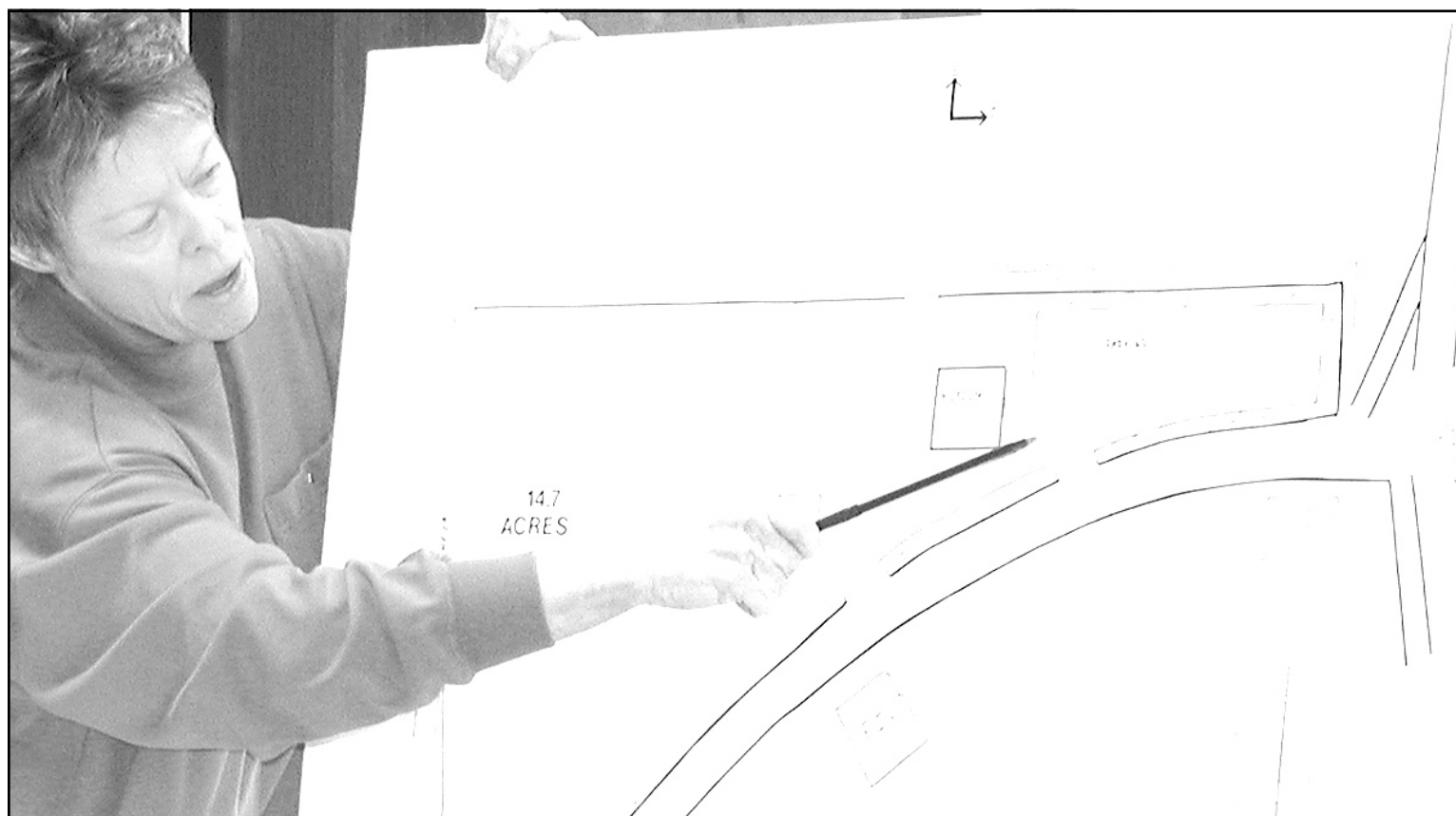
Although the museum is owned by the city, it's not just for Goodland, Holton said; it's for Sherman County — artifacts and history of the whole county are displayed in the museum. And the new museum will be the permanent home of the Sherman County Historical Society.

Its current location has 4,500 square feet of space, she said, and the new one will have 22,000, nearly five times as much. It will include a suite for the historical society and a public meeting room, besides room to display more artifacts than are out now and more storage room.

The basement will be used for storage, Holton said, and the museum will share that space with the historical society.

The replica of the first patented helicopter will be moved out of the pit it's in now, she said, and be put on the same level as viewers. It's not as impressive as it could be, displayed as it is, Holton said; it's 20 feet tall, but people can't tell with it down in the pit.

The larger museum will allow room to display Dr. A.C. Gulick's long gun collection, some Indian artifacts and other things that are in storage now. There will be room at



Linda Holton, director of the High Plains Museum, pointed on a map to where the new museum would be, along with the one-room school house and other features to be added later. Drawings of the building design and the front entrance for the new museum (right) were unveiled at the at the Sherman County Historical Society meeting Saturday.

Photos by Sharon Corcoran
The Goodland Star-News



the new site for the one-room school house and for outdoor displays.

"We can represent the farming community better than we have," Holton said, adding one of the proposed exhibits for the new site is a windmill display with an explanation of the importance of windmills to the area.

Every year we wait, she said, the cost of materials go up. There is

\$15,000 in endowment, she said, and tax-deductible contributions can be made to the Sherman County Community Foundation for the museum project.

Besides that, Holton said, some companies may be interested in donating in exchange for having their names mentioned. About 7,000 people per day go east and west on the Interstate, she said, the museum

could appeal to a company to build the helicopter room and then mention their name as the benefactor. Also, the Docking Institute at Fort Hays State University will help with seeking grants, she said, providing a list of places to apply and information on how to do it.

Whether or not to change the museum's name hasn't been addressed, Holton said, but if some-

one comes in with \$3.5 million, they can probably have it named after them.

It would be neat to have rotating Smithsonian exhibits, said Curtis Duncan, radio personality at KLOE; they have a lot of things they can't put out and have traveling exhibits.

"There are so many things the museum could do," Holton said, "with space."

Historical Society changes officers, honors member

By Sharon Corcoran

The Goodland Star-News

The Sherman County Historical Society elected two new members to the board, replacing its president, re-elected a member with an expired term and extended an honorary membership at its annual meeting Saturday.

The review of the past year included a discussion of finances and memories of the board members.

The society's president, Lloyd Holbrook, had served two three-

year terms on the board and had to step down because the bylaws say a board member can serve no more than two consecutive terms without a one-year absence, and Carol Baum, who had finished her first three-year term, chose not to run for another.

They were replaced by Millie Wright, wife of Bill Wright, a retired farmer, and Hal Lycett, priest at the Saint Paul's Episcopal Church. Evelyn Berry, who had served part of an expired term, was

re-elected for a full term.

President is David Branda; Brian Freeman is vice president; Christie Rasure, recording secretary; Berry, corresponding secretary; and Eileen Townsend, treasurer. Other board members are Curtis Hurd and Gerry Osterman.

Ruth Soward, who edited the historical society's newsletter for 22 years, received an honorary membership. Honorary memberships are extended to those who help the society and are lifetime member-

ships, said Branda, who conducted the meeting, since Holbrook was out of town.

Soward said her husband was on the board when Charles Henry, the first editor of the bulletin, left after two issues in 1975.

"He told them I would edit it," she said.

She did the job 22 years before turning it over to Jennifer House.

The historical society had \$45,606 income for the year, which included \$19,593 in donations,

\$12,516 from the county, \$4,552 from fund-raisers and \$4,295 from dues. The \$2,005 from selling publications was almost double the previous year, Branda said.

Expenses were \$47,485 and included \$35,233 in property expense, \$2,400 for utilities for the research center and \$3,698 for utilities at the Ennis-Handy House.

The society had \$29,731 on hand at the beginning of the year and ended it with \$27,854 on hand.

The historical society did well this year, Branda said; probably no one hasn't gone by and drooled over the Ennis-Handy House. The house was renovated on the outside in the past two years, including a new paint job this year. The wooden storm windows are in the process of being installed as weather and time permit, Branda said, and the house has been nominated for the National Historic Registry.

The historical society has new

plaques to honor those who have contributed to the society. The plaque for the mortgage-burning campaign was done by Mann's Jewelry and Gary Gregory with a laser-engraved picture of the house done by the Goodland High School production class.

While sharing memories of the past year, Baum said she loves to do research and has enjoyed working with Berry on the programs they gave at Wheat Ridge Acres Retirement Community.

"I have been involved in things I thought I'd never do," she said.

Freeman, having been in Goodland and on the board one year, said he enjoyed working on the Ennis-Handy House and that Goodland is a refreshing change from Denver.

Rasure said she liked doing the Christmas After-Hours for the Chamber of Commerce at the Ennis-Handy House, and the society will do it again this year.

Energy Center water line may not use county ditches

Getting water to the Goodland Energy Center may not go down the county right of way the Sherman County commissioners heard Monday.

Public Works Director Curt Way appeared to report he had talked to Ron Pickman of the Goodland Energy Center about the water line. He said Pickman told him there were some landowners who may be willing to allow the pipeline to be laid on their land rather than the

county's right of way.

He will continue to work with Pickman on the water line.

The commissioners said they are willing to allow the use of the county right of way, but only if other options have been exhausted.

Way said he had received estimates from the Kansas Department of Transportation for milling and overlay of the roads from I-70 to old U.S. 24 at Caruso and Ruleton.

The estimated cost for Caruso is

\$23,282 and \$28,525 for Ruleton. He said these two projects are to be part of the work the state has approved to be done beginning this spring as part of the resurfacing of I-70 from Goodland to the Stateline.

The commissioners approved the cost of the road projects.

The commissioners held a 30 minutes closed session with Way on personnel matters. No action was taken and the meeting was adjourned.

The next commissioner meeting will be 8 a.m. on Tuesday in the courthouse, 813 Broadway.

correction

The web site address in the front page story "Can you help find this missing offender" in *The Goodland Star-News* on Tuesday should be www.sherman.kansasgov.com. This was due to a reporting error.

□□□□□
The Goodland Star-News will

correct any mistake or misunderstanding in a news story. Please call our office at (785) 899-2338 to report errors. We believe that news should be fair and factual. We want to keep an accurate record and appreciate you calling to our attention any failure to live up to this standard.

Let your money work for you the whole year, not once a year.

Think you need \$4,000 to make your IRA contribution? Think again. You can contribute roughly \$333.33* a month and still maximize your IRA for the year.

Making your contributions monthly allows your money to work for you throughout the year, rather than missing out on months of potential growth.

Systematic investing does not assure a profit and does not protect against loss in declining markets.
* Eleven installments of \$333.33 each, one of \$333.37.

Call or stop to learn more.

Kris Yost
114 E. 11th
Goodland,
Kansas 67735
(785)-899-3611
www.edwardjones.com
Member SIPC

Edward Jones
Serving Individual Investors Since 1871

Invitation to Bid
2004 CFP Modernizations Sparks and Handy Towers for the Goodland Housing Authority

Bid Date:.....Friday, March 3, 2006
Bid Time:.....1:00 pm Mountain Standard Time (MST)
Bid Place.....Goodland Housing Authority
515 E. 5th Street
Goodland, KS 67735

Pre-Bid Meeting (attendance mandatory)
Date:.....Tuesday, February 21, 2006
Time:.....10:00 am MST
Place:.....GHA Offices in Sparks Towers

The GHA will receive sealed bids for the Work referenced above. The Work includes removal and replacement of sidewalk, restoration of cantilevered concrete balconies and handrails, electrical modernization work, replacement of some fire doors/hardware, new carpeting and other items as indicated, at both of the apartment buildings listed above. Both buildings are three story, concrete frame with masonry veneer. Buildings house 1 and 2 bedroom, elderly apartments as well as offices and community spaces. All bidders shall attend the Pre-Bid Meeting and shall verify that they have inspected the existing site conditions prior to submitting their bid.

For any information, contact Richard Zingre' at Zingre and Associates, P.A., 1019 Scott Ave., Fort Scott, KS 66701, (620) 223-6030. To receive a printed set of plans and specs, send a check for \$35.00 made out to Zingre and Associates, P.A., to the office of Zingre' and Associates. This is a non-refundable purchase. Electronic versions of the plans and specs are available by e-mail for free. Plans may also be reviewed at the Plan Rooms of: F.W. Dodge, and Reed Construction Data.

The owner reserves the right to reject any and all bids and waive irregularity in bidding. The contract will be awarded to the lowest responsive bid if reasonable, and if it is in the interest of the GHA to accept it.

Attention is called to the provisions of equal opportunity and payment of not less than the minimum salaries and wages as set forth in the specifications.

This contract is subject to the conditions of Executive Order 11246, which prohibits discrimination in employment because of race, color, religion, sex or national origin on federal or federally assisted construction contracts. this contract also is subject to the provisions of title VI of the Civil Rights Act of 1964.

Farmers and Ranchers...
Mark your calendar to be motivated and energized by agriculture advocate and ag broadcaster Trent Loos.

February 22
Sherman County Farm Bureau Farm/City Banquet

\$10/person, includes meal at 6:00 pm (MST)
7:15 pm (MST) ~ Trent Loos, keynote speaker, Elks Lodge, Goodland

For more information, contact Sherman County Farm Bureau member Amy Sederstrom at (785) 899-2378.

Funding provided by Kansas Farm Bureau Foundation.