

Wesleyan Coyotes face tough beginning

The Coyotes of Kansas Wesleyan University will start their next football season against what may be the two toughest teams on their schedule — and will have to face both of them on the road.

The Coyotes open their season in Hillsboro against Tabor College, the two-time defending Kansas Collegiate Athletic Conference champion. The Blue Jays went 11-1 last season and were ranked No. 6 in the last National Association of Intercollegiate Athletics poll. Their only loss last year came in the quarterfinals of the national playoffs.

Last season in Salina, Tabor beat Kansas Wesleyan 32-13 in the season opener.

The Coyotes travel to Wichita for their second game against the Falcons of Friends University. Friends ended its season 7-3 last year, and although the Falcons missed the playoffs, they did receive some votes in the final poll.

The Coyotes defeated Friends 24-21 last year in Salina by scoring 10 points in the fourth quarter.

Kansas Wesleyan will play its home opener on Saturday, Sept. 23,

against the University of St. Mary. The Alltel Coyote Kickoff Classic also will be the school's homecoming game.

Coyotes' home games are played at Martin Stadium on campus at the corner of Cloud and Fourth Streets.

After traveling to play Ottawa University on Sept. 30, Kansas Wesleyan will enjoy a three-game home stretch starting with Southwestern College on Oct. 7.

A week later, the Coyotes take on Southwestern Assemblies of God University (Texas) for their only nonconference game. The Bulldogs of McPherson College visit Salina on Oct. 21.

The Coyotes are back on the road the next two Saturdays, traveling first to North Newton to take on Bethel College, then a week later in Sterling to face the Warriors.

Kansas Wesleyan will end its regular season on Nov. 11, Veterans Day, against Bethany College of Lindsborg..

The Coyotes were 8-2 last year and were ranked as high as No. 18 before dropping out of the poll at the end of the season.

Hornets lose bid for national title

The Hornets' bid for the NCAA Division II national baseball championship was thwarted Tuesday as Franklin Pierce College of New Hampshire defeated Emporia State University 4-0 in 11 innings.

Defense dominated game seven of the Division II World Series in Montgomery, Ala., as neither team could score until the 11th, when the Ravens picked up four runs in the top of the inning.

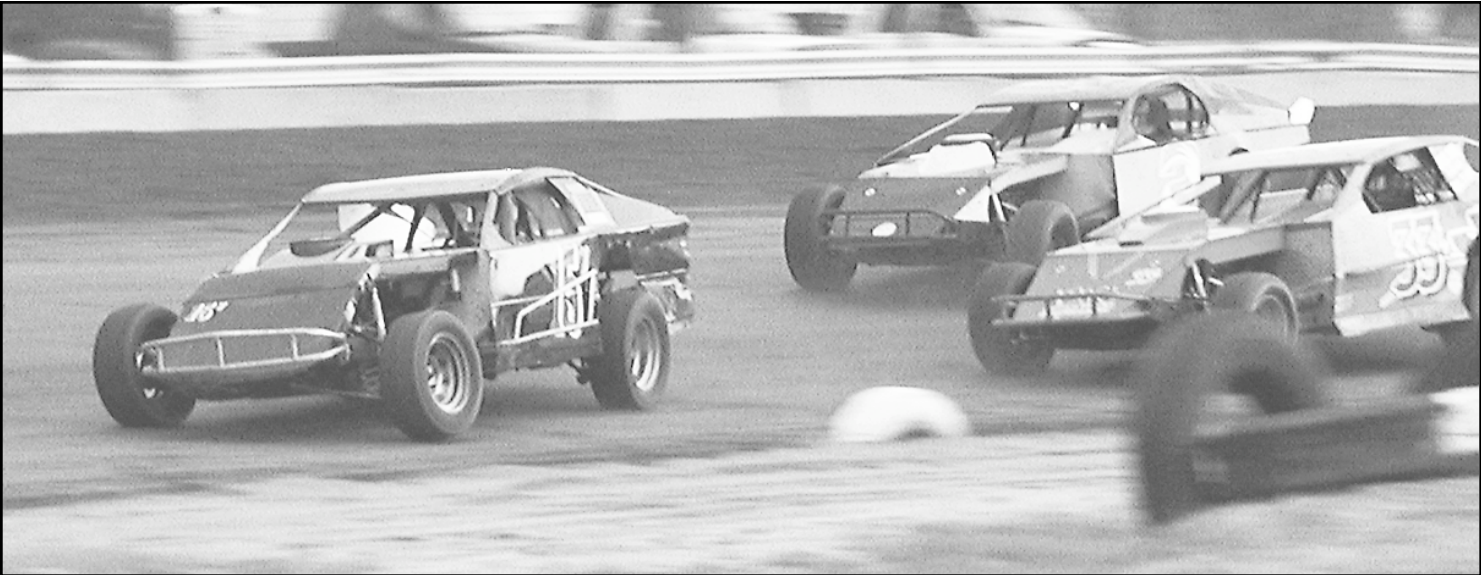
Franklin Pierce got three of its eight hits in the 11th, including a

double by Mike Chambers which drove in three runs. In the bottom of the inning, the Ravens held Emporia State to a "three-and-out" as all three batters grounded out to end the game.

The Hornets ended their season 49-13 while Franklin Pierce headed into Thursday's semifinal against the University of Tampa at 46-12 after beating Ashland University (Ohio) 7-2 on Wednesday.

The championship game will be played Saturday.

Let's go to the races



Modified cars ran a preliminary race at the Sherman County Speedway held at the Sherman County Fairgrounds on Saturday, May 20. The final races that night were rained out and the

races on Saturday will start early at 5:30 p.m. so those final races can run.
Photo by Tom Betz/The Goodland Star-News

BOYS ROOKIE 2006

1. Northern Sun
2. Garcia's Home Furnishings
3. Fontanelle Hybrids
4. Unruh Family Chiropractic
5. The Total Look

David Avila 890-5823
Rich Bateman 899-7465
Brad Bergsma 890-2846
John Murray 899-6252
Marcia Harkins 890-2444

matters of record

District Traffic

The following fines were paid in the Sherman County District Court: **Jan. 9, 1994** — Deanne Lemois, \$70 reinstated for speeding.

Dec. 28, 1999 — Terry L. Crosby, \$76 reinstated for speeding.

Oct. 17, 2002 — Gabriel A. Estrada, \$180 reinstated for speeding.

Nov. 21, 2002 — Stephen P. Oreilly, \$230 reinstated for speeding.

Feb. 17, 2003 — Bard J. Selwyn, \$360 reinstated for no liability insurance and \$60 reinstated for unlawful acts with a vehicle.

March 7, 2004 — Roy O. Williams, \$120 reinstated for speeding.

Sept. 11, 2004 — Leann K. Young, \$168 reinstated for speeding.

Jan. 26, 2005 — Juan C. Nunez, \$144 reinstated for speeding and \$0 reinstated for driving while license is cancelled, suspended or revoked.

May 13 — Aimee V. Hansen, \$360 reinstated for first conviction of driving while suspended and \$90 reinstated for speeding.

June 12 — Gary D. Brewer, \$360 reinstated for first conviction of driving while suspended and \$66 reinstated for speeding.

Sept. 1 — Winston E. Fordyce, \$160 reinstated for no registration.

Classifieds work! 899-2338

Check out our low rates.

Call today for your free, no-obligation quote.



FARM BUREAU FINANCIAL SERVICES

Auto Home Life Annuities College Retirement

www.fbfs.com

Drew W. Pilger
1610 Main
Goodland
(785) 899-2378

Farm Bureau Life Insurance Company/West Des Moines, IA. Farm Bureau Mutual Insurance Company/West Des Moines, IA.
*Companies of Farm Bureau Financial Services © 2005 FBL Financial Group, Inc. 420

SPORTS TELEVISION SCHEDULE

Saturday

9 a.m. ESPN SportsCenter from Bristol, Conn.

10 a.m. ESPN Women's College Softball NCAA Women's College World Series

11 a.m. ESPN2 LPGA Tournament Shoprite Classic: Second Round from Atlantic City, N.J.

FOX MLB Baseball Teams TBA

12:30 p.m. ESPN Women's College Softball NCAA Women's College World Series

1 p.m. CBS Golf Memorial Tournament

NBC Arena Football Conference championship

1:30 p.m. FX NASCAR Busch Series StonebridgeRacing.com 200 from Dover International Speedway

2 p.m. ABC WNBA Basketball Los Angeles at New York

3 p.m. ESPN SportsCenter from Bristol, Conn.

4 p.m. ESPN2 Track & Field Reebok Grand Prix from New York

5 p.m. ESPN Women's College Softball NCAA Women's College World Series

IND MLB Baseball Arizona Diamondbacks at Atlanta Braves from Turner Field

6 p.m. FX SPMLB Baseball Marlins at Rockies

6:30 p.m. TNT NBA Basketball Playoffs - Teams TBA

7:30 p.m. ESPN Women's College Softball NCAA Women's College World Series

9 p.m. ESPN2 SportsCenter from Bristol, Conn.

Sunday

11 a.m. ESPN Women's College Softball NCAA Women's College World Series

IND MLB Baseball Arizona Diamondbacks at Atlanta Braves from Turner Field

12 p.m. CBS Golf Memorial Tournament

ESPN2 LPGA Tournament Shoprite Classic: Third Round

FX NASCAR Nextel Cup Neighborhood Excellence 400

12:05 p.m. WGN MLB Baseball Chicago Cubs at St. Louis Cardinals from Busch Stadium

1 p.m. NBC Arena Football Conference championship

NBC Arena Football Conference championship

1:30 p.m. ABC IRL Racing IndyCar Series in Watkins Glen, N.Y.

ESPN Women's College Softball NCAA Women's College World Series

4 p.m. ESPN SportsCenter from Bristol, Conn.

5 p.m. ESPN2 Women's College Softball NCAA Women's College World Series Game 13

6 p.m. ESPN MLB Baseball Los Angeles Angels of Anaheim at Cleveland Indians from Jacobs Field

7:30 p.m. ESPN2 Women's College Softball NCAA Women's College World Series Game 14

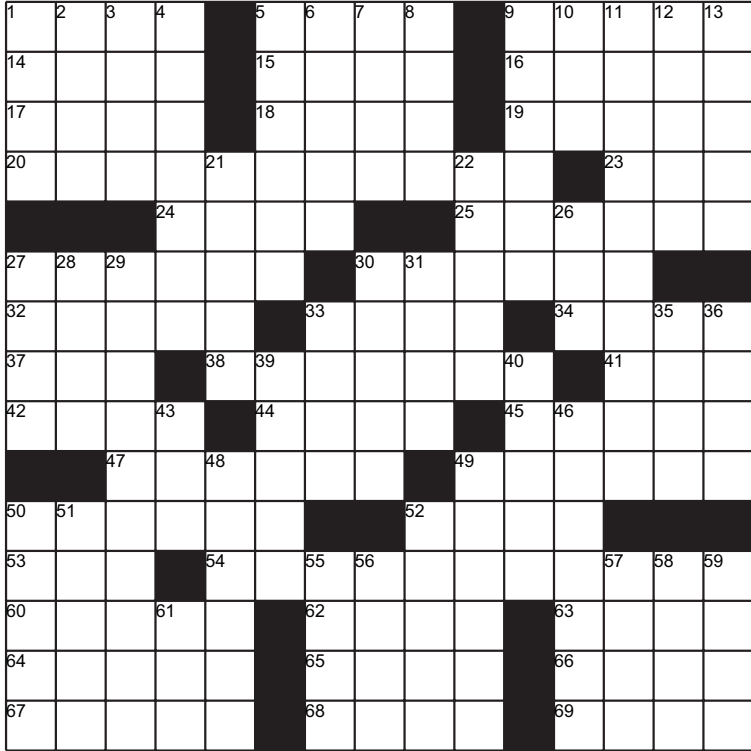
9 p.m. ESPN SportsCenter from Bristol, Conn.

Crossword Puzzle

ACROSS

1. "Hamlet" has five of them
5. Rushed along
9. Tiara inset
14. "This means trouble!"
15. Beat by one run, say
16. Roomy dress
17. Track assignment
18. Trotsky of Russia
19. Dentist's request
20. Boot camp trainer
23. Where Lux. is
24. Casual shirts
25. Sporty Chevys, familiarly
27. Stood up to
30. Shea and Ashe
32. Pulled a boner
33. No longer valid
34. Baseball-airing channel
37. Tell a good one
38. Hollywood hopeful

41. Ode title starter
42. Onion's cousin
44. "Gotcha"
45. Mimic's skill
47. Chowder servers
49. Sirens et al.
50. Lined up
52. Paint can direction
53. Charge carrier
54. Second-stringer
60. Prefix with brew or wave
62. It's sold in sticks
63. Hebrides island
64. Get gussied up
65. Caboose
66. Bow-toting god
67. Start a volley
68. Alien from Ork
69. ___ Hashanah



American Profile Hometown Content

© MacNamara's Band, Inc. 060528

DOWN

1. January 1 song word
2. Burn to a crisp
3. Singer Braxton
4. Sheepherding breed
5. Had control of
6. Think tank nuggets
7. Prima donnas' problems
8. Fender blemish
9. Shook up
10. Quarterback Manning
11. Evaluator of whites and roses
12. Come after
13. Lewd looks

21. City on the Aire
22. Give the slip to
26. Track supporter
27. Big name in PCs
28. HOMES member
29. Independent writer, e.g.
30. Tender areas
31. Roofer's unit
33. Ming collectible
35. Left on a liner
36. Some voice votes
39. Squiggle over an "n"
40. Shire of "Rocky" films
43. Cartoondom's Krazy ___
46. Evian competitor
48. Make a fillet of

49. On the job
50. Chuckleheads
51. Tours's river
52. Gather wool
55. Expected outcome
56. Nile queen, for short
57. Philippine tribesman
58. A son of Seth
59. Skin problem
61. Increase, with "up"

The crossword puzzle brought to you by:

The Goodland Star-News

1205 Main, Goodland, Kan. 67735
(785) 899-2338