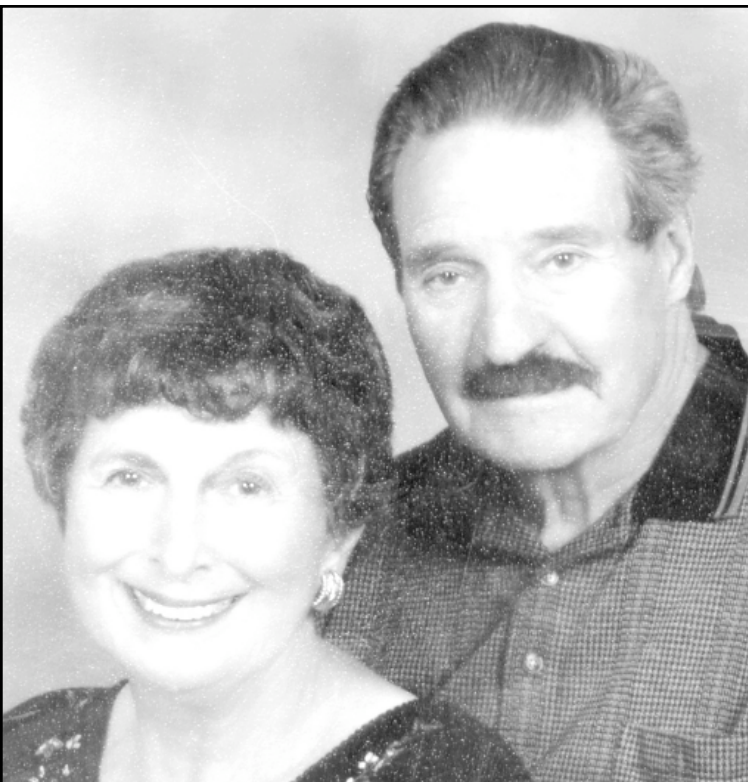




John and Joan Finders in 1956.



John and Joan Finders today.

## Couple celebrates Golden Anniversary

Joan (Konevko) and John Finders celebrated their 50th wedding anniversary on Friday, July 21, 2006. They were married at St. Augustine Catholic Church in St. Cloud, Minn., in 1956. They have five children, Cathy

(Mack) Finders-Shaver of Indianapolis, Stephen (Mary) Finders of Parker, Colo., Cheryl (Ron) Cowan of Goodland, Janice (Scott) Shupert of Littleton, Colo., and the late James Finders. The couple has 13 grandchildren.

## Goodland woman receives sales award



Yonkey

Roxie Yonkey of Goodland received the Silver Award for outstanding achievement in 2005 for L.W. Barrett Co. of Denver in late April at the firm's annual meeting at the Doubletree Hotel in Denver. The company sells products with logos or personal messages used for advertising, public relations, incentives, employee recognition and business gifts. Yonkey and her husband Eric have been associated with Barrett since 2000 in their business, Red Brick Road Promotions.

**Classifieds work!**  
**899-2338**

# Shop Burlington for all your needs

### Health Essentials

Natural Foods, Vitamins,  
Massage Therapy,  
Acupuncture & More

Natural Living Cottage  
& Wellness Center

314 14th Street, Burlington, Co.  
719-346-4681



Advertising  
pays give  
Anne  
a call today.

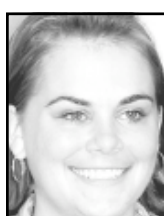
**785-899-2338**

# Work starts on strategic plan

As I said in my last article, the economic development office is working with individuals and organizations on a "working" strategic plan.

What I mean by "working" is that it is not a typed-up portfolio that sits in an office and collects dust. It is community-building, goal-setting and action teams getting things done for the well-being of the community and those who live here.

A steering committee has come together to work out how to start this process in Sherman County. Through these articles and others in the paper, you will be kept up to date of where we are in this process.



## tiffani mcminn

• development notes

Another topic in the last article is housing rehabilitation and demolition. I am working with a representative from Pioneer Country Development Inc. on possible grants available to fix up or get rid of dilapidated houses. The deadlines for the two programs we are looking at are Sept. 1 and Nov. 1.

the grant.

Pioneer Country Development is a regional resource for our city and county to use for grants such as housing, water and sewer, community facilities and much more. I am on their board, and I will make sure to keep you updated on these programs and others.

Right now, we are still in the research phase to see what will present the most need for rehabilitation or demolition and what is our best option of getting

A new and updated version of our web site is coming together. To check out our progress, see [www.gogoodlandks.com](http://www.gogoodlandks.com).

If you are looking for the economic development office, we have moved to 104 E. 10th, the old hotel building.

Please don't forget that we can help you start your dream of running your own business. Many financial options are available, no matter how big or small your business is. Stop in and see us today on how your dream can come true.

Tiffani McMinn is Sherman County economic development director.

# Some angry behavior over top

Usually when someone gets mad, the reasons are fairly clear and understandable to those around them. A few choice words are spoken, and for most people, the emotional outburst is quickly over.

But some people often react with behavior far out of proportion to the incident. They have temper outbursts that may involve throwing or breaking objects or physically attacking another person.

People who frequently react in an overly aggressive manner may have "intermittent explosive disorder," said Dr. Emil Coccaro, chair of psychiatry at the University of Chicago's medical school.



## high plains mental health

• plain sense

The disorder is defined as multiple outbursts that are way out of proportion to the situation. The angry outbursts often include threats or aggressive actions and property damage. "Road rage" is an example of this kind of behavior, as are some incidents of domestic violence.

For most people who have been diagnosed with this disorder, the

difficulties begin during childhood or adolescence and often have a profound and ongoing impact on their lives.

Family members and friends may describe such a person as calm and responsible in most situations, yet when confronted with even minor stress, they explode and even become violent.

Dr. Coccaro says the disorder can have a biological basis that involves inadequate production or functioning of serotonin, a mood-regulating and behavior-inhibiting chemical in

the brain. He says treatment with anti-depressants is often helpful, along with behavior therapy that includes anger management.

Contributed by Karen Schueler, manager, Consultation and Education Department. The views expressed here are those of the individual writer and should not be considered a replacement for seeking professional help.

Mail questions to High Plains Mental Health Center, Plain Sense, Consultation and Education Department, 208 E. Seventh, Hays, Kan. 67601. Internet site: [www.highplainsmentalhealth.com](http://www.highplainsmentalhealth.com).

# Cool-season grasses victims of invasion

Most of our lawns here in the Goodland area tend to be cool-season grasses like blue grass and fescue.

We sometimes see invasions of other grasses, like bermuda, within these lawns. New selections of bermuda grass are being used in lawns in areas south and east of us.

Bermuda grass can make a nice lawn if you don't mind its invasiveness and short growing season. However, most of us dislike both of these attributes.

Warm-season grasses such as bermudas, zoysia and buffalo green up later than the cool-season



## dana belshe

• ag notebook

grasses like the fescue and Kentucky bluegrass. They also go dormant earlier in the fall.

This can be unattractive if Bermuda invades a cool-season lawn. The Bermuda will be brown during much of the spring and fall while the rest of the lawn is green.

Also, Bermuda is much more

during the summer months if it is in full sun.

The question then becomes, "How do you control Bermuda that has invaded a cool-season lawn?" Research conducted during 1996 showed that glyphosate (Round-up, Kleen-up, Killzall, Kleeraway) is the best herbicide for the job.

and heat resistant than cool-season grasses, so it will take over a cool-season lawn

In trials, Kansas State University applied a 2 percent solution of glyphosate on July 15 and again on Aug. 15 on a Bermudagrass plot that was more than 15 years old. Over one year later, they saw no regrowth.

Glyphosate works best if the Bermuda is growing well. The better it is growing, the more chemical is taken up and pushed into the roots.

Water and fertilize if needed to get it going. Spray about the middle of this month (or when the Bermuda is growing well) and again about a month later if there is any green left. Wait two more weeks and reseed.

## matters of record

### District Traffic

The following fines were paid in the Sherman County District Court:

**June 19** — Linda F. Handle, \$120 for speeding.

Bruce A. Palmer, \$126 for speeding.

Jon M. Rohman, \$150 for speeding.

Michael L. Short, \$258 for speeding.

Catherine M. Weipert, \$213 for speeding.

Jeffrey D. Wiencrot, \$360 for first conviction of driving while suspended.

**June 20** — William S. Cromwell, \$120 for speeding.

George E. Eberly, \$114 for over weight load.

Catherine A. Szdelko, \$120 for speeding.

**June 21** — Brant A. Atkinson,

\$138 for speeding.

Jeremy D. Morris, \$144 for speeding.

Patricia D. Olander dismissed for no vehicle liability insurance.

Shengrong Wu, \$150 for speeding.

**June 22** — Yazmin Guerrero-Ruiz, \$168 for speeding.

Eric D. Powell, \$168 for speeding.

**June 23** — Salvador B. Borunda,

\$138 for speeding.

Thomas A. Brehmer, \$114 for speeding and \$60 for no license.

Richard T. Frisbie, \$120 for speeding.

Gregory V. Griffith, \$120 for speeding.

Jordan L. Phillips, \$120 for speeding.

Carmela Soto-Garcia, \$80 for no child safe seats.

James M. Spiegelman, \$138 for speeding.

Natalya Yakovleva, \$231 for

speeding.

**June 24** — Buanne M. Keel,

\$132 for speeding.

Bonnie R. Minnick, \$132 for speeding.

Travis J. Oakes, \$132 for speeding.

Lester W. Taylor, \$138 for improper parking.

**June 25** — Miguel A. Aguilera,

\$132 for speeding.

Anthony F. Gregorio, \$132 for improper parking.

### NOTICE OF BUDGET HEARING

The governing body of City of Goodland will meet on the 7th day of August, 2006, at 5:00 p.m. in the City Commission Room, 204 W. 11th for the purpose of hearing and answering objections of taxpayers relating to the proposed use of all funds and the amount of ad valorem tax.

Detailed budget information is available at City Office and will be available at this hearing.

### BUDGET SUMMARY

Proposed Budget 2007 Expenditures and Amount of 2006 Ad Valorem Tax establish the maximum limits of the 2007 budget. Est Tax Rate is subject to change depending on the final assessed valuation.

FUND	2005		2006		Proposed Budget 2007		
	Prior Year Actual Expenditures	Actual Tax Rate *	Current Year Est of Expenditures	Actual Tax Rate *	Expenditures	Amount of 2006 Ad Valorem Tax	Est. Tax Rate *
General	2,209,330	24.757	3,011,101	31.796	3,291,225	889,585	35.883
Bond & Interest	235,282	4.531	234,350	5.578	139,224		
Library	116,900	4.029	124,900	4.368	172,599	155,073	6.255
Employee Benefits - City	429,927	15.291	476,863	14.746	629,975	340,963	13.754
Employee Benefits - Library	10,135	0.349	11,244	0.395	11,440	9,878	0.398
Airport	2,704	1.854			322,141		
Special Highway	150,249		155,000		156,568		
Electric Utility	5,024,940		5,891,843		6,631,798		
Water Utility	825,138		897,011		959,044		
Sewer Utility	425,263		349,677		432,700		
Solid Waste Utility	413,989		356,783		361,700		
Cemetery Endowment							
Cemetery Improvement	9,356		5,000		95,881		
Mun. Court Div Fees	264		3,500		18,150		
Self Insurance	277,634		402,000		402,500		
Special Park & Rec	1,647		15,000		20,000		
Vehicle Inspections	820		7,200		9,200		
C.I.R.F.	1,127,080		703,553		459,226		
M.E.R.F.	71,389		244,303		336,470		
Grant Imp. Reserve Fund	30,367		1,234,406		354,769		
Electric Reserve							
Water Reserve							
Sewer Reserve	2,999						
Tree Replacement							
Cemetery Perp. Care							
Sales Tax	142,512						
Law Enforcement Trust	3,000						
Electric Meter Deposits	32,587						
Water Meter Deposits	20,723						
Steelevater Water Park Proj.							
Fire Equip.							
Airport Improvement	349,582						
CDBG	64,167						
Water Sys. Imp. (SRF)							
CDBG Housing Grant	5,950						
Insurance Proceeds							
State Water Plan	12,816						
FEMA							
Totals	12,021,299	50.811	14,130,992	56.883	14,804,610	1,395,499	56.290
Less: Transfers	1,822,801		1,899,483		2,074,965		
Net Expenditure	10,198,498		12,231,509		12,729,645		
Total Tax Levied	1,263,248		1,400,984		1,400,984		
Assessed Valuation	24,861,465		24,628,815		24,790,951		
Outstanding Indebtedness,							
January 1,		2004		2005		2006	
G.O. Bonds		720,000		530,000		310,000	
Revenue Bonds		0		0		0	
Other		2,141,180		2,043,058		1,941,366	
Lease Purchase Principal		1,634,468		1,445,840		1,167,827	
Total		4,495,648		4,018,898		3,419,193	

\*Tax rates are expressed in mills

Mary P. Volk  
Clerk