

- jr. buymanship-girls(7-13)red, red
Tiffany Thomas, Market Lamb, blue, blue, Class Champion, blue, Class Reserve; sheep sr showmanship, blue, Grand Champion

Raqual Tomsic, Foods & Preservation - 7,8,or 9yr-old non-perishable, blue; Needlework - quilting, blue, Grand Champion; Arts & Crafts - age 7-12 craft, red

Eryn Topliff, Market Swine, blue
Katlyn Topliff, Dog Showmanship - Youth Intermediate, blue; Market Swine, red; Dog Showmanship - Agility, red

Kirsten Topliff, Dog Showmanship Youth Sr., blue; Market Swine, red

Corbin Townsend, Market Swine, blue, blue; swine sr showmanship, blue

Ross Townsend, Market Swine, blue, red; swine sr showmanship, blue

Saige Vandiver, Market Goat, blue; Market Swine, blue, red; goat jr showmanship, Grand Champion; Poultry Exhibition - exotics: 1 Cockerel, blue, Reserve Champion; Poultry Exhibition - Exotics: 1 Cockerel, 2 Pullets, blue, Grand champion; swine jr showmanship, red

Blaine Varney, Market Goat, blue; goat int showmanship, blue; Other Breeds of Rabbits - rabbit all other breeds, blue

Shaina Varney, Rabbit Recognized Breeds - jr. buck, under 6mos., blue; Rabbit Recognized Breeds - sr. doe-over 8mos., red

Dayne Webring, Catch-It-Pig, blue; swine jr showmanship, blue; Arts & Crafts - age 7-12 craft, blue, blue, blue, red

Elizabeth Wellman; Foods & Preservation - 10-11 yr.-old(non-perishable), blue, blue; Level I Clothing - travel kit, blue; Level I Clothing - stuffed animal, blue; Dress Up Your Duds - fabric reconstruction jr, blue; Const. Style Review - level I-style revue, blue; Knitting - Beginner - 1st yr in project, blue; Level I Clothing - notebook, red

Adrienne West, Llamas - Female, blue, Reserve Champion; Llamas Performance - obstacle class, blue; goat sr showmanship, blue; Arts & Crafts - age 13-19 art, blue; Market Swine, red; swine sr showmanship, red

Ray West, Market Swine, blue; Market Goat, red; goat int showmanship, red; swine int showmanship, red

Tamara West, Market Swine, blue; Llamas - Female, blue, Grand Champion; Llamas Performance - obstacle



Caitlyn Cottrill, 7, had a Reserve Champion for herbs in dehydrated foods, and sister Courtney Cottrill, 12, had the Grand Champion in herbs.

Photos by Tom Betz/The Goodland Star-News

class, blue; Market Goat, red; goat int showmanship, red; swine int showmanship, red

Holly Wilkening, Market Swine, blue, blue; Foods & Preservation - 10-11 yr.-old(non-perishable), blue, blue, blue, Class Reserve Champion, red; Level I Clothing - travel kit, blue; Level I Clothing - stuffed animal, blue; Level I Clothing - notebook, blue; Level I Clothing -

Any other item made, blue, blue, blue; Dress Up Your Duds - combination of techniques jr, blue; Const. Style Review-level I-style revue, blue, blue; Purchased Style Review - jr. buymanship-girls(7-13), blue; Arts & Crafts - age 7-12 craft, blue, blue, red, red; Dog Showmanship - Youth Intermediate, blue; swine int showmanship, red; Dress Up Your Duds - applied jr, red

Brock Wilkens, Arts & Crafts - age 13-19 art, blue, blue, blue, blue

Grant Wilkens, Arts & Crafts - age 13-19 art, blue

Riley Wilson, Purchased Style Review - jr. buymanship-girls(7-13), blue, blue; Exploring 4-H, blue

Sydney Winston, Market Goat, blue, blue, Grand Champion; Market Swine, blue, blue, red, red; goat int showmanship, blue; Garden - garden display, blue; Garden - beans-12 green, blue; Garden - cabbage-1, blue; Garden - cucumbers-5 pickling, blue; Garden - cucumbers-5 slicers, blue; Garden - eggplant - 1, blue, Grand Champion; Garden - okra-5, blue; Garden - peppers-5 red or green bell, blue; Garden - peppers-5 hot, blue; Garden - pumpkin, blue; Garden - rhubarb-5 stalks, blue, Reserve Champion; Garden - squash-1 summer, blue; Garden - squash-1 winter, blue; Garden - tomatoes-10 cherry or pear, blue; Garden - tomatoes-5 red, blue; Garden - watermelon-1, blue; Garden - other vegetable, blue; Garden - other fruit, blue; Foods & Preservation-12, 13, or 14 yr. old(non-perish.), blue, blue, blue, blue, Grand Champion, red; Foods & Preservation - ed.exhibit(12,13,14yr.old), blue; Food Preservation - sweet spreads, blue, Class Reserve Champion; Food Preservation - fruits and juices, blue, Reserve Champion; Food Preservation - pickles and relishes, blue, Grand champion; Food Preservation - Tomato/tomato products, blue; Purchased Style Review - jr. buymanship-girls(7-13), blue, blue, Grand Champion; Needlework - embroidery, blue, Class Champion; Needlework - miscellaneous, blue; Arts & Crafts - age 7-12 craft, blue, blue, blue, blue; Horse Showmanship - Inter. Showmanship, blue, Grand Champion; Performance - Horse - bareback equitation, blue; Performance - Horse - english pleasure, blue; Performance - Horse - western horsemanship(A,B,orC), blue; Performance - Horse - western pleasure(A,B,orC), blue; Performance - Horse - reining(A,B,orC), blue; Performance - Horse - barrel racing(A,B,orC), blue; Performance - Horse - Trail class (A,B,orC), blue; Dog Obedience Class - Sub-Novice B, blue; Dog Obedience Class - Sub-Novice B, blue; Pets-(cat) - jr. registered.non-registered, blue; Project Poster - Poster, blue; swine int showmanship, red; Garden - beets-5, red; Garden - carrots-5, red; Garden - potatoes-5 white, red; Food Preservation - low acid vegetables, red; Performance - Horse

- english equitation, red; Dog Showmanship - Agility, red

Kathy Wood, Foods & Preservation - 15-18 yr. old(non-perishable), blue; Needlework- needlepoint, blue

Sabre Yarbrough, Foods & Preservation - 7,8,or 9yr-old non-perishable, blue, Reserve Champion; Level II Clothing - an article, blue, blue, blue; Level II Clothing - Any other item, blue, blue, red; Const. Style Review - level II-style revue, blue; Level II Clothing - Notebook, red; Level II Clothing - a garment, red; Dress Up Your Duds - fabric reconstruction jr, red

Kaleb Zwick, Arts & Crafts - age 7-12 craft, blue; Arts & Crafts - age 7-12 legos/kinex, blue; Rocketry - Rockets made from kit - Int., blue, Grand Champion

TRI STATE ROYAL

BEEF

Showmanship

Josh Johnson, Rawlins County Kan., 1st

Janea Ochs, Hodgeman County, Kan., 2nd

Chris Basler, Washington County, Colo., 3rd

Heifer

Garrett Brunk, Cheyenne County, Kan., 1st

Clay Schilling, Sherman County, Kan., 2nd

Cheyenne Wiley, Bourbon County, Kan., 3rd

Old Pro

Dustin Wiley, Cheyenne County, Kan., 1st

Taylor Crumbaker, Mitchell County, Kan., 2nd

Travis Havel, Cheyenne County, Kan., 3rd

Conformation

Chris Basler, Washington County, Colo., 1st

Clay Schilling, Sherman County, Kan., 2nd

Grace Hammer, Wallace County, 3rd

SHEEP

Confirmation

Ariane Briscoe, Lincoln County, Kan., 1st

Cody Barilla, Pratt County, Kan. 2nd

Brett Johnson, Kit Carson County, Colo., 3rd

Showmanship

Justine Woofter, Scott County, Kan., 1st

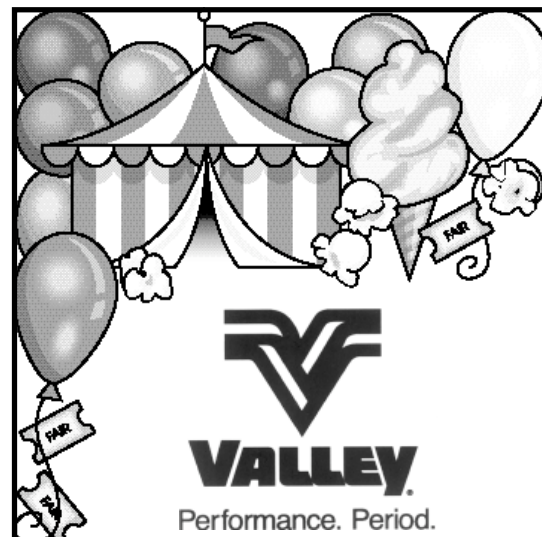
Great job 4-H Fair Participants!

Come in to see our fine jewelry/diamonds, crystal, Boyd's Bears, Colonial Candles, class rings, trophies and plaques.

Quality watches from Fossil, Seiko watches and Seiko music motion clocks, In store jewelry repair and engraving.



Darrell and Sharon Mann
1005 Main, Goodland Kan.
785-899-6100



WAY TO GO!
YOUR HARD WORK
HAS paid off.



723 W. Hwy. 24 • Goodland, Kan.
(785) 899-5628 or 1-800-798-5628

Julie Neihage, McPherson County, Kan., 2nd
Ariane Briscoe, Lincoln County, Kan., 3rd

Old Pro

Tyler Bobinmyer, Hayes County, Neb., 1st
Julie Neihage, McPherson County, Kan., 2nd
Brady Rundel, Thomas County, Kan., 3rd

SWINE

Old Pro

Clay Mulligan, Scott County, Kan., 1st
Macoy Rains, Logan County, Kan., 2nd
Garrett Reiss, Wallace County, Kan., 3rd

Showmanship

L.T. Plunkett, Hamilton County, Kan., 1st
Lauren Warner, Furnas County, Neb., 2nd
Dakota Reiss, Wallace County, Kan., 3rd

Conformation

Marley Conine, Scott County, Kan., 1st
McKellen Rains, Logan County, Kan., 2nd
Casey Dickinson, Ellis County, Kan., 3rd

Norma Emig, who said she was from the Goodland High School class of 1957, had a Grand Champion in foods for her rolls. She had 14 first place blue ribbons.



Open Class results

Madison Albers, Crafts-Nature Crafts, Blue

Margie Albers, Sewing-Plastic Canvis Needlework, Red; Needlework-Family Heirloom, Blue

Jim Allaman, Vegetables-Cucumbers-picklers, Blue; Vegetables-Cucumbers-slicers, Red; Vegetables-Green Beans, Blue; Annuals-Marigold, White; Vegetables-Squash-green zucchini, Blue; Perennials-Achillea-Yarrow, Blue; Vegetables-Squash-Yellow Crookneck, Red; Vegetables-Squash-Yellow Straightneck, Red; Vegetables-Squash-Yellow Zucchini, Blue; Annuals-Canna, Blue

Pat Allaman, Tropical-Hibiscus-Perennial, Blue; Annuals-Zinnia, Giant, Red; Food Preservation-Fruits-Peaches, Blue; Tropical-Water Lily, Blue

Jon Anderson, Horse-Performance Class-Trail, White; Horse-Performance Class-Barrel Racing, Red; Horse-Performance Class-Pole Bending, Blue

Sadie Avila, Needlework-Knitting, Blue

Margaret Baalman, Sewing- Crochet Table, Blue; Needlework-Crochet, Blue

Charley Baker, Vegetables-Garden Display, Blue

Ron Barkley, Vegetables-Other

Vegetable, Red; Vegetables-Squash-Yellow Crookneck, Blue; Vegetables-Peppers-Jalapeno, White; Vegetables-Okra, White

Madison Bartlett, Horse-Performance Class-Western Pleasure, Red; Horse-Halter Class-Saddle Horse Mares, White

Nelson Bergemann, Poultry- 1 Cockerel Meat Type, Blue

Christopher Berls, Crafts-Flowercraft, Red

Randy Berls, Cookies-No Bake, Blue; Arts-Water Color, Red; Vegetables-Peppers-green yellow or red bell, Blue; Vegetables-Peas-Sugar Snap, Blue; Vegetables-Green Beans, Red

Claire Bowker, Annuals-Sunflower-Novelty, Blue, Blue

Alyssn Brady, Arts-Charcoal-Pastel, Red; Arts-Drawings, Blue, Blue, Red

Chris Bustillos, Other items not Listed, Red; Crafts-Wood, Reserve Champion

Gloria Bustillos, Needlework-Crochet, Blue

Rayes Bustillos, Sewing-Miscellaneous, Red

Mary Butler, Food Preservation-Jelly-Grape, White; Vegetables-Leaf Lettuce, White; Fruits-Peaches, Red; Fruits-Grapes, Blue; Perennials-Sur-



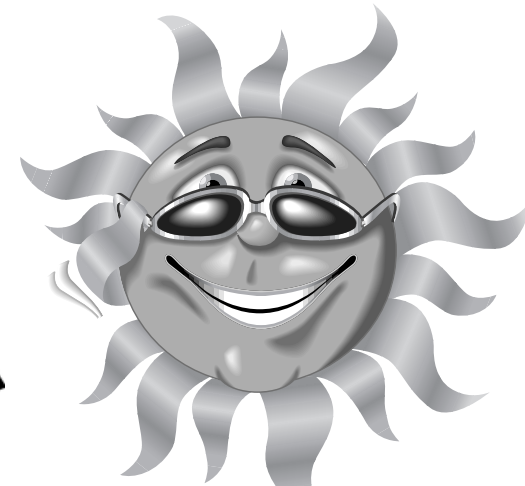
Great Job!



High Plains Office Supply, LLC

Full line of Office supplies, furniture and machines. Over 10 years of training and experience servicing office machines.
Now providing Western Union services and various hobby supplies.
1118 Main Street, Goodland, Kan. 67735
785-890-6900


Great Job 4-H'ers



Stegman's
SUBWAY
2217 Enterprise Road
785-899-5245

Thanks to all

4-H & Open Class participants for making the 2006 NWK District Free Fair a great success



Cat•Cummins•Detroit
4-Wheel Drive Tractors•Full-line of Truck Parts & Accessories
If you've cussed it or kicked it, call us & let the Boys fix it.

Truck and Tractor Repair L.L.C.

714 E. Hwy. 24
Goodland, Kan. 67735
785-899-2401•785-899-2217

prise Lily, Red; Annuals-Petunia-Common, Blue; Vegetables-Cucumbers-slicers, Blue; Fruits-Strawberries, Blue; Annuals-Dahlia 4" and over, Red; Annuals-Verbena, Red; Food Preservation-Pickles-Sweet cucumber, Blue; Vegetables-Onions-green, Blue; Vegetables-Other Vegetable, Reserve Champion; Fruits-Walnuts-black, Red; Vegetables-Carrots, Red; Food Preservation-Fruits-Pears, White

Dusti Chadwick, Photography-Black & White, Blue, Blue, Red Photography-Color, Blue

Dixie Chatfield, Needlework-Crochet, Blue; Needlework-Embroidery, Blue

Will Clark, Dog-Obedience-Youth Junior (7-11), Red

Ali Coach, Horse-Performance Class-Lead Line, Blue

Aaron Coash, Horse-Performance Class-Lead Line, Blue; Dog-Obedience-Open A, Champion

Austin Coash, Horse-Performance Class-Lead Line, Blue

Hope Cochran, Vegetables-Squash-Acorn, Blue; Vegetables-Potatoes-white, Red; Vegetables-Potatoes-red, Red

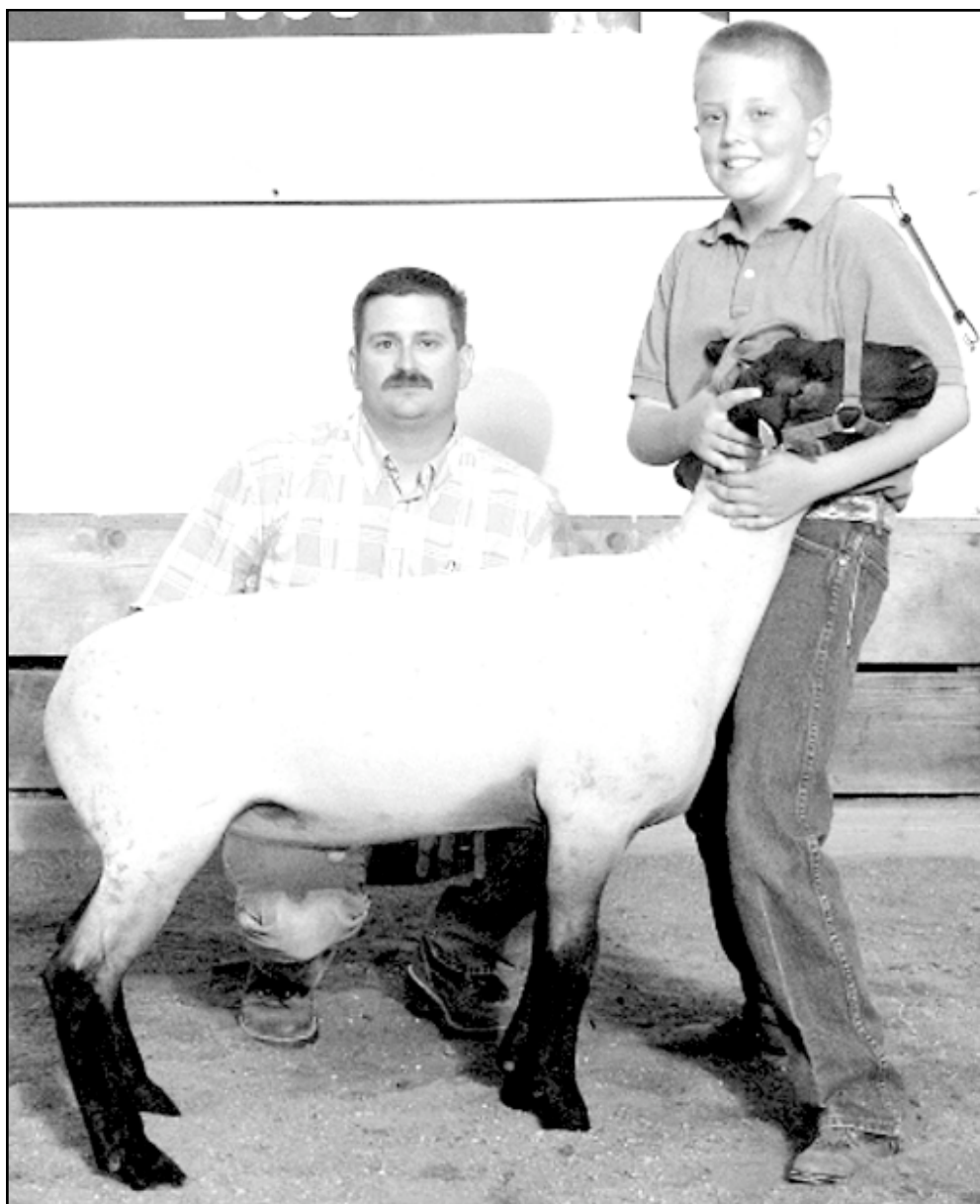
Opal Cogdill, Sewing-Plastic Canvis Needlework, Blue, Blue, Blue

Grace Cole, Crafts-Decorated Shirts, Red

Jessica Cole, Photography-Black & White, Reserve Champion

Anita Coleman, Annuals-Zinnia, Giant, Blue; Arrangements-Kitchen Bouquet, Blue; Perennials-Coneflower, Red; Annuals-Black-eyed Susan, Blue; Annuals-Larkspur, Blue; Annuals-Petunia-Fancy, Blue; Perennials-Coreopsis, Blue; Vegetables-Peppers-Banana, Red; Annuals-Portulaca-Rose Moss, Blue; Annuals-Other, Blue; Annuals-Salvia, Red; Fruits-Peaches, Blue; Perennials-Rose, Floribunda, Blue; Fruits-Strawberries, Red; Annuals-Sweet Peas, Blue; Annuals-Verbena, Blue; Vegetables-Cucumbers-picklers, White; Fruits-Grapes, Red; Vegetables-Rhubarb, Red; Vegetables-Other Vegetable, Blue; Vegetables-Okra, Blue; Perennials-Daisy, Shasta, White; Perennials-Gladiolus, Reserve Champion; Annuals-Lantana, Red; Container Gardening, Red; Perennials-Clematis, Blue; Perennials-Other, Red; Goat- Doe-3 yrs & older, Blue; House Plants-Other, Blue; Green Hanging Basket, Blue; Annuals-Aster, Blue; Perennials-Black Eyed Susan, Blue; Annuals-Nicotina, Blue; Perennials-Phlox, Blue; Perennials-Achillea-Yarrow, Red; Perennials-Sedum, Blue; Annuals-Vinca, Red; Perennials-Other, Blue; Perennials-Gaillardia, Blue; Other-Green House Plant, Blue; Tropical-Other, Blue; , Perennials-Mint in Bloom, Red; Perennials-Golden Glow, Blue

Caitlyn Cottrill, Food Pres.-Dehydrated Foods-Herbs, Reserve Champion



Garrett Nemechek had the Grand Champion sheep purchased by Josh Dechant for Bankwest of Kansas.

Courtney Cottrill, Food Pres.-Dehydrated Foods-Herbs, Champion

Jarek Crow, Other items not Listed, Blue

Julie Crow, Crafts-Stamping, Blue; Photography-Story Display-Color, Blue; Photography-Black & White, Champion; Crafts-Paper, Blue

Manten Crow, Crafts- Fused Beads, Blue; Other items not Listed, Blue; Arts-Multi-Media, Red; Arts-Water Color, Red; Vegetables-Peppers-Banana, Blue; Crafts- Garden Art, Blue; Annuals-Sunflower-Noveltty, Red; Annuals-Sun-

flower-Traditional, Red

Deanna Currie, Sewing-Towel Topper, Blue; Needlework-Afghans, Blue; Needlework-Knitting, Red

Gale Currie, Crafts-Wood, Red, Blue, Red

Laura Dawes, Poultry-Bantams: 1 Cockerel, 2 Pullets, Blue, Reserve Champion, Blue, Blue; Bucket Calf, Blue; Poultry-Bantams: 1 Cockerel, Blue; Poultry-1 Cockerel Layers, Blue; Poultry-3 pullets Layers, Blue; Poultry-Bantams: 3 Pullets, Blue; Poultry-1 Cockerel, 2 Pullet Meat Type,

Blue, Blue ; Poultry-Waterfowl: Geese, Blue; Poultry-Waterfowl: Ducks, Red

Quinten Dawes, Poultry-1 Cockerel, 2 Pullets Layers, Reserve Champion; Poultry-Bantams: 1 Cockerel, 2 Pullets, Blue, Blue, Blue, Blue; Poultry-Bantams: 3 Pullets, Blue; Poultry-Turkeys: Meat Type, Blue; Poultry- 3 pullets Layers, Blue; Poultry- 3 Pullets Meat Type, Blue; Bucket Calf, Blue; Poultry-Waterfowl: Ducks, Reserve Champion; Poultry-Bantams: 1 Cockerel, Blue

Caleb Dechant, Crafts-Wood, Red; Vegetables-Squash-Other Winter, White; Crafts-Paper, Red; Arts-Scratch Art, Blue; Horse-Performance Class-Lead Line, Blue; Annuals-Zinnia, Giant, Red; Arts-Crayon, Red; Crafts-Ceramics, Blue; Crafts-Decorated Shirts, Blue; Vegetables-Eggplant, White; Arts-Water Color, Red; Crafts-Fused Beads, Blue; Arts-Sculptures, Blue; Crafts-Jewelry, Blue; Arts-Acrylic, Blue

Hannah Dechant, Horse-Performance Class-Lead Line, Blue; Arts-Drawings, Blue, Red; Crafts-Fabric Crafts, Red; Crafts-Pottery-hand crafted, Red; Crafts-Ceramics, Blue; Annuals-Marigold, Blue; Arts-Water Color, Blue; Crafts-Fused Beads, Blue; Crafts-Jewelry, Blue; Arts-Scratch Art, Blue; Annuals-Zinnia, Giant, Blue; Arts-Charcoal-Pastel, Blue; Crafts-Decorated Shirts, Blue; Crafts-Paper, Blue; Arts-Sculptures, Blue; Vegetables-Eggplant, Blue; Arts-Acrylic, Blue; Crafts-Wood, Red; Vegetables-Squash-Other Winter, Red; Arts-Crayon, Red

Josh Dechant, Tomatoes- 3 red, Blue

Koren Dechant, Crafts-Metal, Red; Vegetables-Squash-Other Winter, Blue; Crafts-Paper, Blue, Blue, Blue; Crafts-Miscellaneous, Blue; Crafts-Stamping, Blue, Blue; Vegetables-Eggplant, Red Annuals-Zinnia, Giant, White; Perennials-Rose, Floribunda, Red;

Brady Deges, Horse-Performance Class-Lead Line, Blue; Horse-Performance Class-Barrel Racing, White

Jill Deges, Horse-Performance Class-Barrel Racing, Blue

Helen Denton, Fruits-Cherries-pie, Blue; Perennials-Rose, Grandiflora, Red; Perennials-Dianthus-Pinks, Blue; Fruits-Walnuts-black, Blue; Perennials-Gaillardia, Red

Whitney Dithars, Perennials-Lily, Day, Blue; Annuals-Sunflower-Traditional, White; Annuals-Petunia-Common, White

Helen Dobbs, Photography-Story Display-Color, Red

Deborah Dorren, Sewing-Latch Hook Frame, Blue; Crafts-Other items not listed, Blue, Blue, Blue

Molton Durhm, Crafts-Models, Blue

Norma Emig, Vegetables-Herbs fresh, White; Annuals-Verbena, White; Vegetables-Herbs-

**Great Job to All Participants
at the fair**

Advanced Auto Body

403 E. 19th, Goodland, Kan. 67735
785-899-5555

WOW!

What a great fair!

WHILE IN TOWN STOP IN AND SEE US!!

WAL★MART®

2160 Commerce Road
Goodland, Kan. 67735 • 899-2111

SUPER CENTER

dried, Blue; Pies-1-crust, Red; Perennials-Dianthus-Pinks, Red; Annuals-Zinnia, Minature, Red; Vegetables-Other Vegetable, Blue; Perennials-Chrysanthemum, Red; Tomatoes- 10 green cherry, Blue; Rolls-Whole wheat, graham, oat, rye, Blue; Quick Breads-Banana, Red; Annuals-Vinca, Blue; Flowering Hanging Basket, Red; Arrangements-Salute to Kansas, Blue; Perennials-Achillea-Yarrow, Blue; Annuals-Marigold, Blue; Rolls-Cinnamon, Blue; Annuals-Lantana, Blue; Yeast Breads-French, Blue; Cakes-Layer-Chocolate, Blue; Annuals-Gazania, Red; Quick Breads-Biscuits, Blue; Fruits-Apples-Crab, Blue; Perennials-Butterfly Bush, Red

Corey Estep, Arts-Drawings, Champion, Blue

Jazlyn Fenner, Crafts-Wreaths, Blue

Peyton Fenner, Crafts-Jewelry, Blue, Blue

Brenda Fisher, Cakes-Special Occasion-Other, Blue; Cookies-Molded-rolled or formed, Red; Vegetables-Swiss Chard, Blue; Needlework-Family Heirloom, Blue

Brittany Fisher, Needlework-Needlepoint, Blue

Kari Fitzgibbons, Quick Breads-Other, White; Vegetables-Cucumbers-slicers, White; Food Preservation-Jelly-Peach, Red; Cookies-Drop, Blue; Quick Breads-Zucchini, Red; Tomatoes-10 green cherry, Blue; Crafts-Fabric Crafts, Red; Vegetables-Squash-



Sydney Winston, 13, was the overall Grand Champion, and had a Grand Champion for her hamburger buns. She had a Grand Champion and Reserve Champion for her vegetables.

butternut, White

Kathy Fitzgibbons, Food Preservation-Jams-Other, Red; Tomatoes- 10 red cherry, Red; Vegetables-Peppers-green yellow or red bell, Red

Makayla Fitzgibbons, Vegetables-Garden Display, Red; Cookies-Chocolate Chip, White

Sarah Flanders, Cakes-Special Occasion-Novelty, Blue

LaDonna Frerich, Food Preservation-Pickles-Sweet cucumber, Red; Food Preservation-Relish-Cucumber, Red; Food Preservation-Pickles-Bread & butter, Reserve Champion, Food Preservation-Jams-Peach, Blue; Food Preservation-Relish-Salsa, Blue; Food Preservation-Pickles-Other, Blue; Food Preservation-Jams-Other, Blue; Food Preservation-Fruits-Peaches, White

Brad Geist, Arts-Drawings, Red, Blue, Red; Arts-Multi-Media, Blue, Blue; Other items not Listed, Blue; Poultry- 1 Cockerel Exhibition, Blue; Arts-Sculptures, Blue

Garrett Geist, Poultry- 1 Cockerel, 2 Pullets Layers, Red

Jessi Geist, Poultry- 1 Cockerel Layers, Red

Alex Gilligan, Crafts-Weavings, Blue; Crafts-Paper, Blue; Arts-Drawings, Blue; Arts-Multi-Media, Blue

Brian Gilligan, Arts-Multi-Media, Blue, Reserve Champion, Blue; Crafts-Weavings, Blue;

Jamie Gittinger, Crafts-Jewelry,

Blue, Red; Crafts-Fabric Crafts, Blue, Blue; Needlework-Knitting, Blue; Sewing-Miscellaneous, Blue, Red; Sewing-Clothing Item, Blue, Blue; Crafts-Wood, Blue, Blue

Chloe Goodwin, Photography-Color, Blue, Red

Bryan Gray, Perennials-Rose, Hybrid tea long stem, Blue; Arts-Drawings, Blue, Blue, Blue; Annuals-Sunflower-Traditional, Red; Arts-Sculptures, Reserve Champion; Arts-Charcoal-Pastel, Red; Annuals-Petunia-Common, Red; Annuals-Marigold, Red

Jed Gray, Annuals-Sunflower-Traditional, Red; Annuals-Marigold, Red; Cookies-Drop, Red; Cookies-Molded-rolled or formed, Blue; Cookies-No Bake, Blue; Annuals-Petunia-Common, Blue

Bryan Guyer, Crops-Field Corn, Blue; Cookies-Drop, Blue; Crops-Millet, Blue

Penny Helderman, Sewing-quilted Wall Hanging, Blue; Needlework-Quilt, quilted by someone else, Blue

Erica Hernandez, Crafts-Fused Beads, Blue; Crafts-Foam Art, Blue; Crafts-Miscellaneous, Blue

Miranda Hernandez, Crafts-Jewelry, Blue; Crafts-Foam Art, Blue, Blue

Janice Hooker, Crafts-Fabric Crafts, Blue; Needlework-Crochet, Blue; Crafts-Items by individual 65+, Blue; Food Pres.-Dehydrated Foods-Meat, jerky, Blue; Vegetables-Herbs-dried, Red; Needlework-Hand Appli-

POST FAIR SPECIAL

The
Goodland Star-News

1 year Subscription \$68⁰⁰

6 Month Subscription \$38⁰⁰

For more information call (785) 899-2338
This offer expires Sept. 15, 2006.

Congratulations on a job well done

Let our experienced personnel assist you with all your application needs. We know the area and are constantly upgrading and improving our equipment to better serve our valued customers in Western Kansas and Eastern Colorado.

Call us today for your personal consultation.

Fertilizer • Herbicide • Insecticide

Dorman Brothers L.L.C.

Four locations

19230 Co. Rd. 55, Burlington, Colo. 80807 • 719-346-7970
9755 Co. Rd. 204, Kit Carson, Colo. 80825 • 719-962-3391
6425 Rd. 21, Goodland, Kan. 67735 • 785-899-5900
1/4 mile south of Hwy. 40 on Rd. Q, Cheyenne Wells, Colo. • 719-962-3391

que, Blue; Needlework-Quilt, quilted by someone else, Blue; Needlework-Machine Applique, Blue

Karen Hooker, Vegetables-Potatoes-red, White; Annuals-Marigold, Red

Hagen Hoss, Perennials-Gaillardia, Blue; Crafts-Flowercraft, Blue; Perennials-Lily, Day, Blue; Annuals-Portulaca-Rose Moss, Red; Arts-Water Color, Blue; Perennials-Achillea-Yarrow, Blue; Perennials-Coneflower, Blue; Perennials-Clematis, Blue; Perennials-Butterfly Bush, Blue; Annuals-Lantana, Blue; Arts-Miscellaneous, Red; Annuals-Daisy, Blue; Arts-Multi-Media, Red; Annuals-Calendula, Red; Crafts-Foam Art, Blue; Arts-Drawings, Red; Crafts-Fused Beads, Blue; Arts-Scratch Art, Red; Arts-Crayon, Red; Annuals-Verbena, Blue; Perennials-Rose, Miniature, Reserve Champion; Tropical-Other, Blue; Crafts-Other items not listed, Blue; Tropical-Other, Red; Perennials-Daisy, Shasta, Blue; Annuals-Other, Red; Crafts-Paper, Blue; Perennials-Sedum, Red; Crafts-Decorated Shirts, Blue; Crafts-Wood, Champion; Perennials-Hollyhock, Red; Annuals-Petunia-Common, White, Perennials-Statice, Red; Perennials-Dianthus-Pinks, Red; Perennials-Other, Blue

Toni Hoss, Annuals-Other, White
Cora House, Needlework-Quilts (Machine), Champion; Sewing-Garment, Red; Sewing-2-piece Outfit, Blue

Toby Hurst, Arts-Drawings, Blue
DeeAnn Ihrig, Crafts-Jewelry, Blue, Blue; Cookies-Drop, Red; Crafts-Dolls, Blue, Blue; Sewing-2-piece Outfit, Red; Crafts-Paper, Blue; Crafts-Miscellaneous, Blue; Crafts-Fabric Crafts, Red

Ella Ihrig, Annuals-Vinca, Blue; Fruits-Walnuts-black, White; Perennials-Gladiolus, Blue; Crafts-Fused Beads, Blue; Tomatoes-10 red cherry, Blue; Crafts-Other items not listed, Blue, Blue; Vegetables-Squash-green zucchini, Red; Arts-Crayon, Blue; Crafts-Miscellaneous, Blue; Tomatoes-3 green, Blue; Crafts-Foam Art, Blue; Perennials-Other, Blue; Annuals-Petunia-Common, Blue; Annuals-Other, Blue; Annuals-Daisy, Red; Crafts-Miscellaneous, Blue; Toma-



Marvin L. Seaman had a Grand Champion in the open class for his hand made knives, and a Reserve Champoin in baking for his bread. He had a Reserve Champion for his fudge.

atoes-10 green cherry, Red

Lyndee Ihrig, Vegetables-Rhubarb, Blue; Quick Breads-Other, Red; Quick Breads-Muffins, Blue; Quick Breads-Muffins, Red; Cakes-Miscellaneous-Other, Red

Tranda Ihrig, Arts-Miscellaneous, Champion, Reserve Champion; Arts-Charcoal-Pastel, Blue

Amy Isham, Quick Breads-Other, Blue

Danielle Isham, Arts-Water Color, Blue, Red; Arts-Acrylic, Blue; Arts-Multi-Media, Blue, Blue; Arts-Sculptures, Blue; Other items not Listed, Red
James Isham, Arts-Crayon, Red; Other items not Listed, Red

Briana Jacobus, Dog-Obedience-Youth Junior (7-11), Blue; Dog-Obedience-Advanced or Graduate Novice, Blue

Gaige Jacobus, Dog-Obedience-Open A, Champion; Dog-Obedience-Youth Junior (7-11), Red

Frances Jones, Crafts-Ceramics, Blue; Crafts-Wood, Blue, Blue; Crafts-Metal, Blue; Crafts-Paper, Blue; Crafts-Wreaths, Blue, Blue; Crafts-Decorated Shirts, Blue; Vegetables-Watermelon, Blue; Vegetables-Cantaloupe, Blue; Vegetables-Gourds, Blue; Crafts-Jewelry, Blue; Crafts-Nature Crafts, Blue, Blue; Crafts-Items by individual 65+, Blue, Blue; Crafts-Dolls, Blue; Vegetables-Other Vegetable, Red; Vegetables-Peppers-Banana, White; Crafts-Decorated Shirts, Blue; Needlework-Crewel Embroidery, Red

Hannah Jones, Crafts-Miscellaneous; Blue; Crops-Grain sorghum-6 stalks, Blue; Crops-Field Corn, Red; Crops-Sunflowers, oil type, Blue

Taitem Jones, Arts-Multi-Media, Red

Tanner Jones, Arts-Water Color, Blue

Thatcher Jones, Arts-Miscellaneous, Red

Tyler Jones, Vegetables-Other Vegetable, Blue

Kenton Keith, Arts-Multi-Media, Red

Minda Keith, Vegetables-Squash-Scallop, Blue; Vegetables-Okra, Red, Arts-Oil, Blue; Cookies-Chocolate Chip, Blue; Other items not Listed, Blue; Arts-Drawings, Blue; Annuals-Zinnia, Giant, Red

Holly Kibel, Photography-Color, Red, Blue; Photography-Black & White, Blue, Red

Emily Klemm, Other items not Listed, Red; Photography-Color, Champion, Reserve Champion, Blue; Arts-Charcoal-Pastel, Blue

Jessica Klemm, Needlework-Knitting, Blue; Crafts-Jewelry, Blue

Tade Kruse, Horse-Halter Class-Saddle Horse Geldings, White; Horse-Halter Class-Saddle Horse Mares, Red; Horse-Performance Class-Trail, Blue; Horse-Performance Class-Barrel Racing, Blue; Horse-Performance Class-Pole Bending, Blue; Horse-Performance Class-Western Pleasure, Blue; Horse-Performance Class-Reining, Blue; Horse-Performance Class-Horsemanship, Blue

Kaitlin Lee, Arts-Sculptures, Blue; Arts-Oil, Blue

Sheldon Lee, Crafts-Fabric Crafts, Champion; Arts-Drawings, Red

Brooke Lockhart, Needlework-Knitting, Blue

Rebecca Lockhart, Crafts-Nature Crafts, Red; Crafts-Jewelry, Red

Jan Lohr, Food Pres.-1 fruit, 1 non-acid veg, 1 meat, Red; Vegetables-Carrots, Blue; Vegetables-Green Beans, White; Vegetables-Peppers-Jalapeno, Red; Food Pres.-Collections-Meal Collection, Champion; Fruits-Plums-Sandhill or wild, Red; Fruits-Apples-Crab, Red; Food Preservation-Jams-Peach, White; Food Preservation-Veg-Beets, White; Food Preservation-Collections-6 vegetables, Red; Food Preservation-Veg-Green Beans, White; Vegetables-Spinach, Blue; Vegetables-Sweet Corn, White; Food Preservation-Misc.-Other Misc. Food, White; Fruits-Grapes, White; Vegetables-Peas-Regular, Red; Food Preservation-Veg-Corn, Blue; Food Preservation-Relish-Beet, Blue; Food Preservation-Veg-Asparagus, Blue; Food Preservation-Meats-Pork, Blue; Food Pres.-Collection-3 relishes, Blue; Food Preservation-Relish-Cucumber, Blue; Food Pres.-Dehydrated Foods-Herbs, Blue; Food Preservation-Veg-Soup Mixture of Veg, Blue; Food Preservation-Meats-Beef, Blue; Food Preservation-Veg-Carrots, Blue; Vegetables-Beets, Blue; Food Pres.-Dehydrated Foods-Fruit, Blue;



BARKER FARM SERVICES, INC.

DAN & BEVERLY BARKER

785-890-2048

Hope you
enjoyed the Fair.

Fertilizer Sales
& Hauling

Hope you enjoyed the fair!

REYNALDO'S

AUTHENTIC MEXICAN FOOD

910 W. Hwy. 24, Goodland, Kan.

Dine-in • Carryout • Drive-through

Open 7 Days a week • 7 am - 10 p.m.

785-899-7077

Serving Breakfast, Lunch and Dinner



Food Preservation-Pickles-Beets, pickled, Blue; Food Preservation-Misc.-Tomato Juice, Blue; Food Preservation-Veg-Peas, Blue; Food Preservation-Meats-Chicken, Blue; Food Preservation-Jelly-Peach, Blue; Food Preservation-Collection 3 meats, Blue; Vegetables-Leaf Lettuce, Blue

Perry Lohr, Food Pres.-Dehydrated Foods-Herbs, Red; Food Pres.-Dehydrated Foods-Fruit, Red; Vegetables-Leaf Lettuce, Red; Fruits-Plums-Sandhill or wild, Blue

Debbie Lucas, Vegetables-Herbs fresh, Red

Ron Lucas, Vegetables-Herbs fresh, Blue

Charlene Mangus, Annuals-Sunflower-Traditional, Blue

Devin Mangus, Annuals-Sunflower-Traditional, Red

Elsie Matthews, Arts-Oil, Red, Blue

Ashtin McClung, Poultry- 3 pullets Layers, Blue

Jonah McClung, Poultry- 3 pullets Layers, Champion

Bethany McGuire, Crafts-Foam Art, Blue, Blue; Crafts-Miscellaneous, Blue; Crafts-Ceramics, Blue, Crafts-Wood, Blue

Torin McGuire, Crafts-Flowercraft, Blue; Crafts-Foam Art, Blue, Blue; Crafts-Miscellaneous, Blue; Crafts-Ceramics, Blue

Brittaney Medrano, Arts-Sculptures, Red; Sewing-Miscellaneous, Red; Sewing-Clothing Item, Blue

Kay Melia, Vegetables-Onions-red,



The home owned carnival is a great part of the Northwest Kansas District Free Fair, and members of the Sherman County Community Services poked a little fun at being "carnies" during the fair parade held

on Saturday, July 29. The home owned carnival ran through the nights of fair week, and this year was open on Saturday after the parade during the truck and tractor pull.

Blue; Food Preservation-Veg-Green Beans, Red; Vegetables-Peppers-Cayenne, Blue; Vegetables-Potatoes-white, Blue; Vegetables-Anaheim, Red; Vegetables-Squash-Yellow Zucchini, Red; Food Preservation-Pick-

les-Bread & butter, Red; Vegetables-Onions-yellow, Champion; Vegetables-Garlic, Blue; Vegetables-Onions-white, Blue; Vegetables-Potatoes-red, Blue; Vegetables-Squash-butter-nut, Blue; Food Preservation-Pickles-

Dill, White; Food Preservation-Relish-Other, Blue; Vegetables-Squash-Scallop, White

Marty Melia, Vegetables-Squash-green zucchini, White; Vegetables-Peppers-Other Hot, Blue; Vegetables-

Sweet Corn, Blue; Vegetables-Cantaloupe, Red; Food Preservation-Pickles-Other, White; Vegetables-Other Vegetable, Blue; Food Preservation-Pickles-Bread & butter, White; Vegetables-Squash-Yellow Straightneck, White;

*We salute
all the 4-Hers.*



Farm Credit
of Western Kansas



1055 S. Range • Colby, KS
785-462-6714 or 800-657-6048

Congratulations Everyone!
Thank you for a great fair!

Witzel & Rhea Imp. Co.

124 W. Hwy 24
Goodland, Kans. 67735
1-800-241-3264



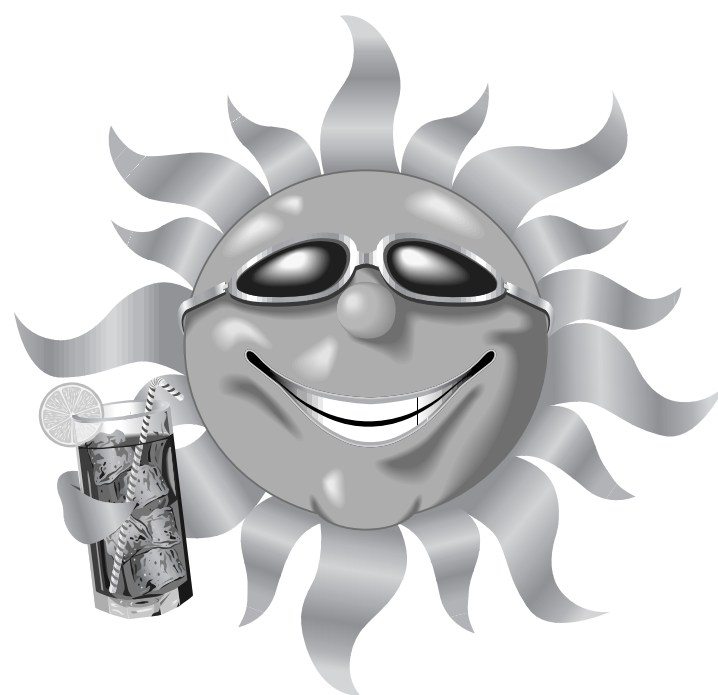
Visit our website at www.caseihcombines.com



and Case Credit are registered trademarks of Case corporation



Hope you enjoyed the fair



Coca-Cola Bottling Company of Goodland

719 W. Hwy. 24 • Goodland, Kan.

(785) 899-2177

Vegetables-Anaheim, Blue; Vegetables-Squash-Scallop, Red; Vegetables-Peppers-Jalapeno, Blue; Food Preservation-Pickles-Other, White

Jayne Melstrom, Crafts-Jewelry, Champion; Food Preservation-Preserves-Apricot, Blue; Crafts-Weavings, Blue; Crafts-Dolls, Blue

Porter Morgan, Annuals-Zinnia, Giant, Blue; Cookies-Chocolate Chip, Red; Arts-Multi-Media, Blue; Perennials-Surprise Lily, Blue

Alex Nelson, Arts-Acrylic, Red

Garrett Nemechek, Horse-Performance Class-Horsemanship, White; Horse-Performance Class-Western Pleasure, White; Horse-Performance Class-Barrel Racing, White; Horse-Performance Class-Pole Bending, White; Horse-Performance Class-Trail, White; Horse-Halter Class-Saddle Horse Mares, White

Jamie Nemechek, Horse-Performance Class-Pole Bending, Blue; Horse-Halter Class-Saddle Horse Geldings, White; Pre 4-H'er, Blue; Horse-Performance Class-Western Pleasure, Blue; Horse-Performance Class-Horsemanship, Blue; Horse-Performance Class-Trail, Blue; Horse-Performance Class-Barrel Racing, Blue

Lucille Nemechek, Food Preservation-Pickles-Other, Blue, Blue; Food Preservation-Veg-Beets, Blue; Food Preservation-Fruits-Peaches, Red; Food Preservation-Fruits-Pears, Red; Food Preservation-Pickles-Beets, pickled, Red; Food Preservation-Jelly-Grape, Red; Food Preservation-Veg-Green Beans, Blue; Food Preservation-Misc.-Other Misc. Food, Blue; Food Preservation-Misc.-Tomato Juice, Red; Food Preservation-Relish-Zucchini, Blue; Food Preservation-Relish-Piccaililli, Blue; Food Preservation-Pickles-Dill, Red; Food Preservation-Veg-Soup Mixture of Veg, White; Food Preservation-Misc.-Other Misc. Food, Blue; Food Preservation-Pickles-Other, Red; Food Preservation-Relish-Salsa, White

Mathew Nemechek, Horse-Performance Class-Lead Line, Blue; Horse-Performance Class-Barrel Racing, Blue

Parker Nemechek, Horse-Performance Class-Pole Bending, Red; Horse-Performance Class-Trail, Blue; Horse-Performance Class-Horsemanship, Red; Horse-Performance Class-Barrel Racing, Red; Horse-Halter Class-Saddle Horse Mares, White; Horse-Performance Class-Western Pleasure, White; Pre 4-H'er, Blue

Ryleigh Paxton, Lamb Shadow Project, Blue

Taylor Peden, Horse-Performance Class-Trail, White; Horse-Performance Class-Horsemanship, White; Horse-Performance Class-Western Pleasure, White; Horse-Halter Class-Saddle Horse Mares, Blue; Horse-Performance Class-Reining, Red; Horse-Performance Class-Barrel Racing, Red; Horse-Performance Class-Pole Bending, Red

Les Perry, Crafts-Jewelry, Blue; Crafts-Wood, Blue, Blue

Chelsea Phillips, Crafts-Miscellaneous, Blue, Blue; Crafts-Fabric Crafts, Blue; Crafts-Decorated Shirts, Blue

Cole Plitz, Poultry- Bantams: 1 Cockerel, 2 Pullets, Blue

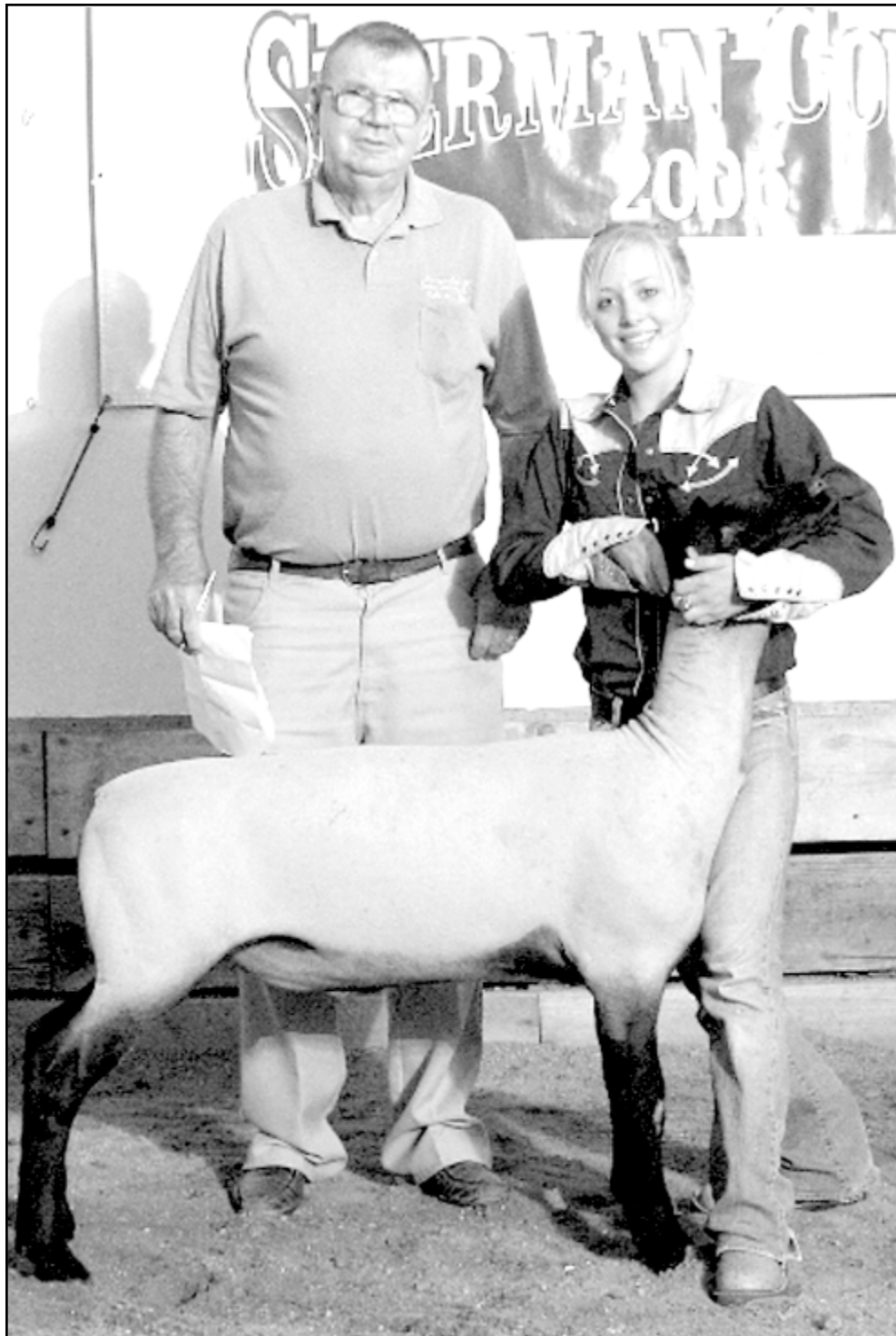
Bryce Raby, Arts-Acrylic, Blue

Jordan Raby, Arts-Acrylic, Blue

Tyler Raby, Arts-Acrylic, Red; Perennials-Rose, Grandiflora, Blue; Perennials-Other, Red; Annuals-Portulaca-Rose Moss, Red; Perennials-Rose, Miniature, Red; Annuals-Marigold, Red

Karlee Raile, Crafts- Foam Art, Red; Crafts-Miscellaneous, Reserve Champion, Red; Needlework-Rugs, Red

Christie Rasure, Perennials-Mint in Bloom, Red; Annuals-Grasses, Blue; Perennials-Golden



Courtney Sheldon had the Reserve Champion sheep purchased by Jack Eklund of Eklund Insurance.

Glow, Red; Perennials-Other, Red; Perennials-Statice, Blue; Wild Flowers-Golden Rod, Blue; Perennials-Butterfly Bush, Champion

Kali Reitcheck, Photography-Color, Reserve Champion, White, Champion; Photography-Black & White, White

Julie Rhea, Horse-Performance Class-Horsemanship, Blue; Horse-Performance Class-Pole Bending, White; Horse-Performance Class-Barrel Racing, White; Horse-Halter Class-Saddle Horse Geldings, White; Horse-Performance Class-Trail, Blue; Horse-Performance Class-Western Pleasure, Red

Marshall Rhea, Horse-Performance Class-Pole Bending, Red; Horse-Halter Class-Saddle Horse Geldings, Red; Horse-Performance Class-Western Pleasure, Blue; Horse-Performance Class-Horsemanship, Red; Horse-Performance Class-Trail, Red

Terri Richardson, Horse-Halter Class-Saddle Horse Geldings, Blue

David Roberts, Crafts-Decorated Shirts, Blue

Eric Ross, Arts-Multi-Media, Blue; Other items not Listed, Blue; Arts-Charcoal-Pastel, Blue

Ruth Ross, Needlework-Stamped Cross Stitch, Reserve Champion

Hannah Sanderson, Arts-Drawings, Blue, Red; Annuals-Zinnia, Giant, White

Jacob Schanbel, Crafts-Models, Blue, Blue, Blue

Mary Schanbel, Arts-Crayon, Red, Blue, Blue; Crafts-Models, Blue

Marvin L. Seaman, Candies-Fudge, Blue; Yeast Breads-Whole wheat, graham, oat, rye, Blue; Vegetables-Peppers-Other Hot, Red; Crafts-Miscellaneous, Reserve Champion; Vegetables-Squash-Yellow Crookneck, White

Kala Sharp, Arts-Sculptures, Blue, Red, Blue; Arts-Acrylic, Red; Arts-Scratch Art, Red; Other items not Listed, Blue

Peri Sieck, Tomatoes- 10 green cherry, White

Brandon Sissel, Crafts-Models, Blue

Amber Smith, Needlework-Knitting, Blue

Spencer Smith, Perennials-Sedum, Blue; Perennials-Black Eyed Susan, Blue; Annuals-Calendula, Red; Annuals-Vinca, Red; Annuals-Statice, Blue; Perennials-Butterfly Bush, Blue; Annuals-Portulaca-Rose Moss, Blue; Crafts-Models Blue Annuals-Sunflower-Traditional, Blue

Shirley Soellner, Food Preservation-Jams-Other, White; Quick Breads-Muffins, White; Needlework-Quilts (Hand), Blue; Food Preservation-Jams-Pear, Blue; Annuals-Sunflower-Confection, Blue; Quick Breads-Other Red Perennials-Black Eyed Susan, Red; Needlework-Quilts (Tied), Red; Needlework-Machine Applique, Red; Food Preservation-Jams-Peach, Red

Kristina Strasser, Lamb Shadow Project, Blue

Tori Swafford, Horse-Halter Class-Saddle Horse Mares, White; Horse-Performance Class-Barrel Racing, White; Horse-Performance Class-Trail, Red; Horse-Performance Class-Western Pleasure, Red; Horse-Performance Class-Pole Bending, White; Horse-Halter Class-Saddle Horse Geldings, White; Horse-Performance Class-Horsemanship, Red

Cappi Thomas, Needlework-Crochet, Blue; Crafts-Ceramics, Blue; Crafts-Wood, Red

Lucy Thomas, Needlework-Counted Cross Stitch, Blue; Vegetables-Squash-Yellow Straightneck, Blue; Needlework-Needlepoint, Blue

Sherry Thomas, Arts-Drawings, Blue, Blue

Raquel Tomsic, Lamb Shadow Project, Blue

Carol Tupper, Cookies-Chocolate Chip, Blue

Rose Turner, Sewing-Crochet Garment, Blue; Needlework-Crochet, Blue

Dayne Webring, Lamb Shadow Project, Blue

Danae West, Dog-Obedience-Open A, Red

Aaron White, Crops-Oats, Red; Tropical-Hydrangea, Champion; Arts-Crayon, Blue; Perennials-Black Eyed Susan, Blue; Arrangements-To A Dear Teacher, Blue; Crops-Oats, Red

Berkley White, Sewing-Clothing Item, Blue; Arts-Drawings, Red; Arts-Acrylic, Blue; Cookies-Drop, White

Brianna White, Rolls-Other, Blue; Arts-Acrylic, Champion, Blue; Sewing-Clothing Item, Blue

Cassie White, Perennials-Sedum, Blue; Arrangements-To A Dear Teacher, Blue; Cookies-Novelty, Blue; Cookies-Bar (other than brownie), Blue; Arrangements-A Painter's Palette, Blue

Kelsey White, Cookies-Chocolate Chip, Red; Arts-Acrylic, Blue, Blue

Greg Whittington, Vegetables-Cucumbers-slicers, Red; Vegetables-Squash-butternut, Red; Vegetables-Sweet Corn, Red; Vegetables-Peppers-Other Hot, Blue

Koda Winchester, Crafts-Miscellaneous, Blue, Blue

Barb Winston, Food Preservation-Pickles-Beets, pickled, White; Food Preservation-Pickles-Dill, Blue; Food Preservation-Veg-Beets, Red; Food Preservation-Veg-Soup Mixture of Veg, Red; Food Preservation-Pickles-Other, Red; Food Preservation-Pickles-Other, Red; Food Preservation-Pickles-Okra, Red; Food Preservation-Fruits-Pears, Blue; Food Preservation-Misc.-Other Misc. Food, Red; Food Preservation-Relish-Salsa, Red; Food Preservation-Pickles-Other, Blue; Food Preservation-Jelly-Grape, Blue; Food Preservation-Misc.-Tomato Juice, White; Food Preservation-Relish-Cucumber, White; Food Preservation-Relish-Piccaililli, Red; Food Preservation-Relish-Zucchini, Red

The Northwest Kansas District Free Fair Board would like to THANK:

Sherman County Commissioners
Superintendents
Terry Richardson - 4-H Livestock Sale
Livestock Buyers
Gambinos - Ice cream
Steve Evert Family
Ambassadors - Parade
Extension Office
William McKnight & Jerry Weber -
Grounds Keepers & Clean-up
In the Can Trash Service
Jim Applebee - Golf carts
Carnival Committee
Vendors
Tri State Exterminators - Floyd Studer
Ambulance Service
Rural Fire Department

Farm Bureau - Watermelon
City of Goodland - Picnic Tables
Master Gardeners
Short & Son Trucking
Lockers
Howdy Rowdy Rodeo volunteers and
livestock suppliers
Western State Bank - 4-H Livestock Sale
Aaron Duell - Photographer
First National Bank - Showmanship
Eagle Cable, KLOE, WalMart, Coke and
Midwest Energy - Hot Dog Feed
Farm Credit - Ice cream
Amy Sederstrom - 4-H Livestock Sale
Sherman County Road & Bridge Department
Bull Riders - Jim and Tracy Weeter

Thank You to the many volunteers & anyone else who helped make the fair a huge success!

