

AN AVID COLLECTOR, Calvin Ufford holds a framed collection of Indian arrowheads. —Herald staff photos by Jeanette Krizek

Man finds pieces of history in fields and along creek banks

By JEANETTE KRIZEK

Holding a piece of history dating back 25,000 years is nothing unusual to Oberlin's Calvin Ufford.

Mr. Ufford has a collection of artifacts that he has literally picked up over the years, including arrowheads, scrapers, axes, shaft hones, awls and drills.

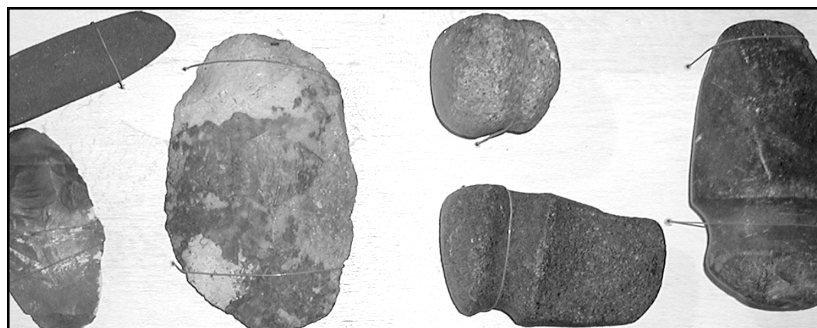
"I have spent many hours bending down, picking up pieces of rock over the years," he said. "After a while, you get better at choosing which rock could be an arrowhead and which is just a rock."

It all started when he was a kid on his father's farm 3 1/2 miles southwest of Oberlin. His dad, Herb, would find arrowheads as he plowed the field with a team of horses and bring them home to show the family.

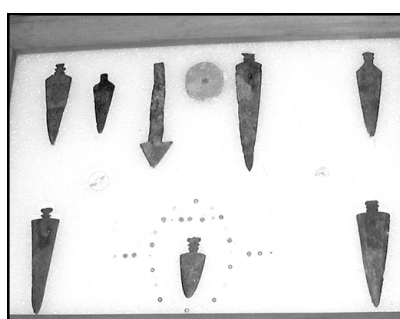
His father also snagged a Spanish ring bit as he was working, and Calvin spent many hours playing with it as a boy. Years later, Calvin sent the bit to the Smithsonian Institute and found it dated back about 300 years.

After a 35-year career as an inspector for Watershed Projects in eastern Kansas, Mr. Ufford and his wife JoAnn moved back to Oberlin in 1987. He said they consider their collection a family effort. They and their children spent many hours over the years in search of Indian artifacts and have over 700 pieces in the collection.

Mr. Ufford said the best find was when he was working in the Hiawatha area for the U.S. Soil Conservation Service. An Arapahoe campsite had been located there and in one day, he



AMONG LARGE PIECES in Mr. Ufford's collection are hammers, axes and shaft hones.



METAL ARROWHEADS were made in England and traded to the Indians for furs.

found 40 points, many of them in perfect condition.

Though luck like that doesn't happen often, he said, you can find pieces along the Sappa and Prairie Dog creeks.

Mr. Ufford said the Indians seemed to follow the south side of the Sappa Creek, because he has found more items on that side, but they traveled on the north side of the Prairie Dog.

Tribes that roamed this area included the Cheyenne, Arapahoe, Apache, Comanche and Kanza.

Mr. Ufford refers to the book *Indian Artifacts* book by Virgil Russell to decide what an artifact is and what it may have been used for. Descriptions and uses detailed in the book can be helpful to the experienced collector, as well as the novice, he says.

Over the years, he said, he has found nice, detailed points in the same area as a crude one, which is a stone that is much older and isn't as detailed. The theory behind this, he said, is that the Indians traveled the same trails and camped in the same locations for many generations.

His collection includes metal spear points and glass beads. He said these were probably made in England and brought to America to be traded to the Indians for furs by the Hudson Bay Co.

Mr. Ufford was able to collect the glass beads, thanks to helpful ants.

The ants had used the beads as part of their pile, and he spent an afternoon picking the colored glass out of the sand. They now rest safely behind glass in one of the display cases.

Sharing his knowledge with others has given Mr. Ufford a lot of enjoyment over the years. He has talked to school children, showing pieces, telling how the Indians used each one and how to start collecting artifacts.

He takes along several small boxes of odds and ends for a hands-on learning experience, so others can get a chance to hold them and examine them closely.

"Once a good piece is dropped and broken, it can never be replaced," said Mr. Ufford, "so I put the good ones behind glass and my not-so-perfect pieces can be handled."

He shares bits of trivia with the students about drills that have sharpened edges on opposite sides of the stone to cut through hide and bone. Ceremonial corner tangs, a stone which has a corner etched out of it, were used as a decoration, not every day. The points used for bow hunting are about one to 1 1/2 inches long, while points longer than this are from spears.

Mr. Ufford gave a seminar at The Gateway last year where those attending could bring in pieces of artifacts to be identified and talk about the history and use of each.

He said that collecting has been in his blood for over 60 years and he hopes to continue adding to his collection for many more.



Out Back

By Carolyn Sue Kelley-Plotts
Out-Back@webtv.net

When your family calls and asks for your help, it's time to hit the road

Serious illness puts life into perspective. Jim's mom, Margie, has been struggling with heart disease and other ailments for the past several years. Last week, doctors called, urging her children to come be with her.

Plans were changed, jobs put on hold, other arrangements for life's pressing issues were made and, in short order, they were all on the road to Montana. When your family needs you, nothing else matters.

Margie was gravely ill and not at all afraid to leave this world. Somewhere she found the reserve to rally her strength and hold on. She has always been a planner, and in anticipation of the potential need for nursing home care, she had already made the arrangements. The nurses love her; she loves them AND the attention they shower on her. She is much improved and Jim is coming home today.

It's a good thing, too! I haven't slept well since he's been away. In fact, I haven't even made it to bed one single night. Every night I've been working late on those Easter Cantata costumes I told you about, then falling asleep in the recliner,

television blaring, lights blazing. The neighbors probably wonder what's going on.

Kara called over the weekend and said they were in their new home. Jennifer and Alexandria went up from San Antonio to help keep track of Taylor during the confusion. I can't tell you how good it makes me feel to know our kids REALLY like each other. And I've got the big family I always wanted. Not by some standards, perhaps, but I think five kids is a pretty big family.

Saw this cute T-shirt. "The Toddler Laws of Property"
1. If I like it, it's mine
2. If it's in my hand, it's mine
3. If I had it a little while ago, it's mine
4. If it looks just like mine, it's mine
5. If I think it's mine, it's mine

Did you hear about the old guy who answered his car phone? His wife said, "I just heard on the news there is a car on I-280, going the wrong way. Please be careful." "Not just one," he scoffed. "There's hundreds of 'em!"



It's Clean Up Time!

HAZARDOUS HOUSEHOLD WASTE CLEANUP

for Decatur County residents will occur on Saturday, April 14th between 8 a.m. and Noon.

This event will be held at the county shop east of Oberlin.

This program is designed to provide residents a place to dispose of their used oil, antifreeze, car batteries, lawn fertilizers and pesticides, latex and oil paints, unwanted chemical, etc.

If you have any questions concerning this program, please call the Decatur County Engineer's Office at 785-475-8111.

AUCTION

Legere is a "Genuine Auction"™

Friday, April 20 @ 10 a.m. (CDST)
Invitational Auction

Combines - Trucks - Tractors - Farm Machinery - Forklifts

Auction Location: Russell Auction Exchange Building
527 S. Fossil (Hwy 281), Russell, Kansas

1998 9610 Maximizer John Deere Combine, corn special.
8640 John Deere Tractor.

1988 Ford 846 4WD Tractor w/ Cummins motor.

1992 Merritt 42' double Hopper Aluminum grain trailer, roll over tarp.

1995 Freightliner FLD120 Semi w/Conventional cab, N14 Cummins.

1993 Volvo White Semi Integral Sleeper Cab, 350 Detroit Series 60.

1992 Merritt 42' double Hopper Aluminum grain trailer, roll over tarp.

1982 Gleaner L2 Combine, Corn Special Hydro-Traction Drive.

N Series Gleaner 20' flex head adapted to fit R-62 or R-72 combine.

1997 John Deere 1293 12-row corn head 30'.

1997 Shelbourne Stripper header Model C84, 28'.

1998 Trailtech tandem combine transport trailer.

1985 John Deere Model 853A 8 row corn head.

Golden Bell Header Trailer for 30' head.

1938-B John Deere Tractor, reconditioned, new tires.

1982 586 B Case Forklift.

1976 Yale Forklift.

1994 Ford F-350 1 ton Service Truck w/ Crew Cab - diesel.

1991 Ford F-350 XLT Lariat 1 ton truck w/Crew Cab.

1987 Dodge Dakota P.U. V-6, auto, 4X4.

1994 Pontiac Transport Mini Van.

1980 GMC Truck w/ 10' steel bed.

Delta 14" Radial Saw Model 40C.

Flex King K-M 7X5 w/ Pickers and anhydrous hook-up.

1984 24' header.

M.F. Model F9001 w/ 12' Melroe P.U..

M.F. Model 1164 6-row corn head.

M.F. Model 44 4-row corn head.

Other items not mentioned.

Terms: Cash equivalent or bank letter of credit day of sale or good check or clearance of check prior to bidding; 5% "Buyer's Premium" will be charged.

LEGERE AUCTION & REALTY, INC.

PO BOX 456, HAYS, KS 67601

1-800-447-2545

www.legerauction.com; legere@legerauction.com