

Shop, Shop, Shop

Sign up here for a \$1,000 Shopping Spree

With our store you get more room, greater selection, new products and expanded services.

Pick up your favorite deli sandwiches, cold drinks, ice, fresh fruit, snacks, beer, lottery tickets, money orders... anything you need

Fresh Daily Bakery

The only thing that stays the same is our friendly hometown service.

Delicious goodies fresh daily. Breads, pies, sweet treats. All your favorites.

Stop in to shop today!

RAYE'S GROCERY

119 W. COMMERCIAL-OBERLIN
(785) 475-2952

FAIR SPECIAL!

10% OFF all Grooming Supplies, horse blankets and pads.

Up to 50% OFF on selected clothing.



ROCKING R

163 S. Penn Ave. - Oberlin, Kansas

BRANSON

Hotel Deals from \$39^{95*}

Visit our website for these incredible online savings.
*Maximum 4 per room, applicable taxes are in addition.
Shows, Shopping & Dining Within Walking Distance.
www.leisurehotelsbranson.com/ks
Based upon availability. Some restrictions apply.

Decatur County Health Department will be giving Tetanus Boosters for **Teenagers** needing them for school.

All day Friday, July 22, 2005

and

All day Friday, July 29, 2005

They will be at a reduced cost on these days only. After these dates, full price will be charged.

Fans

9" Fans \$11.97

12" Fans \$12.97

16" Fans \$16.97

Box Fans \$12.97

Tower Fans \$39.99



Stanley **Best** **Hardware**
All Across America

Joe and Regina Stanley, owners
149 S. Penn - Oberlin, Kan. (785) 475-2331

WARD DRUG STORE

THE FAMILY HEALTH CENTER



- Free Prescription Delivery & Mail Outs
- Free Tax & Insurance Records
- Free Blood Pressure Checks
- Diabetic Supplies
- Copy/Fax Services

Medicare Billing for:

- Inhalation Solutions • Diabetic supplies
- Durable Medical Equipment

Monday - Friday 8:30 - 6:00 • Saturday 8:30 - 3:00



1-800-698-5757

Local: 785-475-2285

Nights & Emergency

785-475-3947

142. S. Penn • Oberlin, KS



Df WwZ XdV_ej U Vd_e
^ R V j ` f ^ ` c V ` W R ^ R _ Z

> V_ Rv d f X y e e' Z ` c v e v z W W Z X d > R j S V e y R e d
h Y j ^ V_ R v W f c e z V d ^ ` d V j e' T ^ ^ z
d' Z Z V e y R_ h ^ ^ V_ Z e ^ e z _ d U _ e ^ R V
j ` f J v h ` W R ^ R _ Z ? V e y v e U V d R d Z X
W e Y v a Z H V R v Y v W e j ` f L e ` Z

J ` f h ` f J U _ e Z ` d V Y v b a R Z d Z
J ` f d ` f J U _ e Z ` d j ` f c W W Z X d
V e Y v Z A V R v J e f d Y v a Z



J ` f c d ^ ^ f _ Z
> V_ e j 9 V R e y 4 V_ e z

() & Z # Z (" ` e j W V) ! ! Z S # Z S S S + Y Z X a J R Z d' V_ e j Y V R e Z T ^

PUBLIC NOTICE

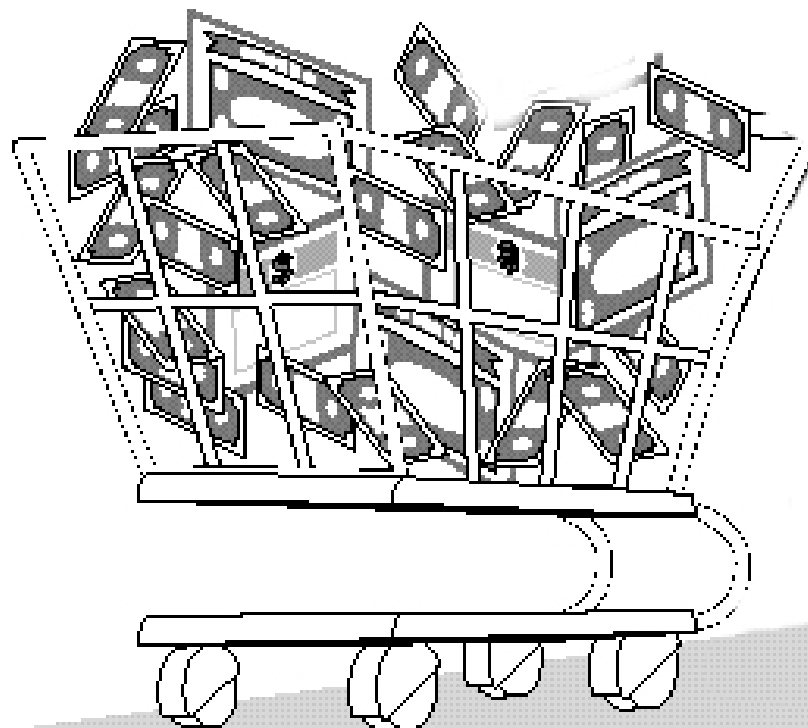
Wendy Vogel M.D. will be leaving Oberlin Medical Arts as of September 1st. She will be returning to Canada.

She would like to thank all her patients for their past patronage as well as the clinic, hospital, and nursing home staff for all their support.

Our best wishes go with her, from the doctors and staff at Oberlin Medical Arts P.A.

\$1,000

Shopping Spree



THE OBERLIN HERALD

OPEN HOUSE

Thurs. July 28 & August 18
5:30 - 7:30 pm
Colby Community College

Class Starts in Colby September 2005

BACHELOR OF SCIENCE IN ORGANIZATIONAL MANAGEMENT & LEADERSHIP

- Practical applications of management skills & emphasis on people
- Students can design, implement & evaluate a project related to their profession
- Complete your bachelor coursework in approximately 1 year by going to class just one night a week



For more information 800/794-6945 ext. 5300
cressler@friends.edu • www.friends.edu



FRIENDS UNIVERSITY

Friends University is accredited by the Higher Learning Commission, a commission of the North Central Association of Colleges and Schools, 30 North LaSalle Street, Suite 2400, Chicago, IL 60602-2504, telephone 800-621-7440, www.ncahighlearningcommission.org. Friends University does not discriminate on the basis of race, color, national origin, sex, disability, or age in its programs or activities. The following person has been designated to handle inquiries regarding this policy: EEOC/Title IX Coordinator, Friends University, 2100 W. University St., Wichita, KS 67215, (316) 295-5000.

MANAGEMENT AND LEADERSHIP