


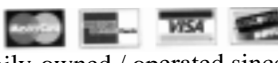
# Win a \$1,000 Shopping Spree

**SPECIAL FOR THIS WEEK**  
 ORANGEADES • LIMEADES  
 LEMONADES



REGULAR \$1<sup>50</sup> **SPECIAL \$1**  
 OR 6 FOR \$ 5

**SUMMER SPECIAL!**  
 20% Off CRYSTAL CANDY DISHES

We now accept these cards for your convenience:  



Family-owned / operated since 1906

**DRUG STORE**

## Addleman

Phone 475-2661 — Oberlin — Toll Free 1-800-794-3784  
 Service and value are the cornerstones of our business.

Come and enjoy the Decatur County Fair  
 August 9 - 13, 2005 in Oberlin, Kansas. Good  
 luck 4-Her's and we appreciate everyone's  
 wonderful moisture for our pastures and crops.  
 See you at the Fair. All of us at Countryside  
 Veterinary Clinic of Oberlin, P.A. invite  
 you to attend the Home Owned  
 Carnival.




Sign up here for a  
**\$1,000 Shopping Spree!**

We want to work for you because 'We Care'

**Countryside Veterinary Clinic  
 of Oberlin, P.A. & Norton, P.A.**


Mark R. Olson - DVM  
 Hwy. 83, N. of sale barn  
 Oberlin, KS  
 785-475-3808



Travis A. Hissong - DVM  
 Hwy. 83, N. of sale barn  
 Oberlin, KS  
 785-475-3808

We accept major credit cards  
**1-800-953-3808**

There's  
 a Reason for Culligan  
 Soft Water in Every Room.



Softer skin  
 Easier cleaning  
 Sparkling glassware

Scratchy laundry. Rough skin. Endless cleaning. Hard water is hard on your home,  
 your family and your budget. Let Culligan bring 65 years of water expertise  
 and service into your home to definitly the damage hard water does.

**Culligan Water Conditioning Co.**  
 201 W. Hall—Oberlin—785-475-2471  
 Free water test  
 Just say "Hey Culligan Man"  
 CALL 1-800-CULLIGAN OR VISIT CULLIGAN.COM

**Culligan**  
 Trust the Water Experts.

**ESTATE  
 CARTRIDGE INC.**  
 AMERICA'S CUSTOM SHOTGUN MANUFACTURER

**DOVE  
 & QUAIL  
 LOAD**

Superior  
 Performance

25 PLASTIC  
 SHOTGUN SHELLS

"The choice of the discriminating shooter"

**DALE'S Fish 'N' Fun INC.**  
 Bob Woolley ..... Joe Dejmial

East Highway 36  
 Oberlin 475-2201 Weekdays: 9 a.m. - 5:30 p.m.  
 Saturday: 9 a.m. - till 4 p.m.

**40% to 50%  
 Off  
 Summer  
 Merchandise**

*The  
 Dresser*

152 S. Penn  
 Monday thru Friday — 9:30 to 5:30  
 Saturday — 9:30 - 5  
 or by special appointment call  
 785-475-3407 during business hours

**Hansen**  
 Plumbing - Heating - Air Conditioning

Repairs • New Installation  
 Commercial • Residential

**HEIL LENNOX**  
 HEATING & COOLING PRODUCTS

**Carrier**

118 E. Commercial  
 Oberlin, KS 475-3154

103 N. 4th Street  
 Atwood, KS 626-3778

**30% Off  
 Garden Center  
 Items!**

**OBERLIN  
 MERCANTILE  
 Co.**

(785) 475-2340  
 Next to the LandMark Inn, downtown Oberlin

**The Teller Room**  
 A Unique Restaurant at the Historic Bank of Oberlin  
 Lunch: Mon.-Sat. 11:30 a.m.- 1:30 p.m.  
 Dinner: Thurs.-Sat. 6:30-8:30 p.m.

**LANDMARK  
 INN**  
 1-888-639-0003  
 189 S. Penn Ave., Oberlin, Kan.

**We dig  
 FLOWERS!** to nurture the soul

Flower Therapy

88% of consumers agree  
 that a gift of flowers can  
 change your mood for the  
 better. 92% of women can  
 recall the last time they  
 received flowers.

- 2005 SAF Consumer Attitudes & Behaviors Study



Nurturing

*Prairie  
 Petals*

"It's not just flowers, it's feelings!"

Toll Free: 1-866-901-3241  
 Experts in the art of expression!  
 Satisfaction Guaranteed




**All  
 Step 2  
 Toys on  
 Sale!**

**R & M Service Center**  
 150 S. Penn Ave. • Downtown Oberlin  
 Friendly Sales and Service  
 • Over 30 Years Experience •  
 (785) 475-2177

**A SHOPPER'S DREAM**

**\$1,000**

You can Win  
 and Shop till  
 you Drop!!

## Shopping Spree Rules:

- To be eligible for the \$1,000 Shopping Spree, you can register at any participating merchant. You must be 18 or older. (No purchase required to win.)
- Employees of sponsoring firms are not eligible at their place of business. Employees of *The Oberlin Herald* and their immediate family are not eligible.
- The prize awarded during \$1,000 Shopping Spree promotion will be in the form of scrip money. Scrip money will be good for merchandise only, no cash, at participating sponsors.
- The deadline for entries is 5 p.m. Friday, August 19, 2005. Boxes will be withdrawn at that time.
- The \$1,000 Shopping Spree prize drawing will be held on **Saturday, August 20, 2005 at the Gazebo at 10:30 a.m.**
- Winner will have from Monday, Aug. 22, 2005 through Friday, Aug. 26, 2005, to spend the \$1,000 scrip money at participating businesses. The winner will notify *The Oberlin Herald* when spending the Grand Prize money and allow a photographer to accompany them when making their purchases. Winner agrees that photos of winner and winner's family and a description of the shopping spree may be used for promotional purposes without limit. Winner agrees to release *The Oberlin Herald*, sponsoring merchants and others associated with this promotion from any and all liability.

# Shop, Shop, Shop

## Sign up here for a \$1,000 Shopping Spree

With our store you get more room, greater selection, new products and expanded services.

Pick up your favorite deli sandwiches, cold drinks, ice, fresh fruit, snacks, beer, lottery tickets, money orders... anything you need

### Fresh Daily Bakery

Delicious goodies fresh daily. Breads, pies, sweet treats. All your favorites.

The only thing that stays the same is our friendly hometown service.

Stop in to shop today!

## RAYE'S GROCERY

119 W. COMMERCIAL-OBERLIN  
(785) 475-2952

**Straw Hats**  
40% Off

**Kids Swimwear**  
75% Off

**Kids/Women's Summer tops/Shorts**  
50% Off



## ROCKING R

163 S. Penn Ave. - Oberlin, Kansas



The Northwest Kansas Educational Service Center is advertising for an Early Childhood Para-educator, A Gifted Para-educator, and a Speech para-educator for the Oberlin School District for the 2005-2006 school year.

**Qualifications:** High School diploma or equivalent. This position requires an individual to provide services to disabled children under the supervision of a certified school staff member.

To receive an application, contact Rose Langley at 785-672-3125 extension 200. For position related questions, contact Kathy Kersenbrock Ostmeyer at extension 111. Applications will be accepted until the position is filled. NKESC is an EOE.

### FIND THE HERO WITHIN

Your dedication to the road is why millions of Americans have food on their tables and clothes on their backs.

You deserve the best company and the finest compensation the industry has to offer.

- No experience necessary
- Company-paid CDL training for qualified candidates
- \$35,500-\$43,500 1st year (inexperienced)
- \$49,500-\$58,500/year in 4 years

With Schneider's benefits and your dedication, the sky is the limit.

**APPLY ONLINE @ [schneiderjobs.com](http://schneiderjobs.com)**

1-800-44-PRIDE • (1-800-447-7433)

Mon-Fri: 7am-9pm, Sat & Sun: 9am-6pm (Central Time)



### Fans

9" Fans  
\$11.97

12" Fans  
\$12.97

16" Fans  
\$16.97

Box Fans  
\$12.97

Tower Fans  
\$39.99



**Stanley** **Do it Best**  
All Across America  
**Hardware**

Joe and Regina Stanley, owners  
149 S. Penn - Oberlin, Kan. (785) 475-2331

## WARD DRUG STORE

THE FAMILY HEALTH CENTER



- Free Prescription Delivery & Mail Outs
- Free Tax & Insurance Records
- Free Blood Pressure Checks
- Diabetic Supplies
- Copy/Fax Services

### Medicare Billing for:

- Inhalation Solutions • Diabetic supplies
- Durable Medical Equipment

Monday - Friday 8:30 - 6:00 • Saturday 8:30 - 3:00



1-800-698-5757

Local: 785-475-2285

Nights & Emergency Kurt Vollertsen

785-475-3947

142. S. Penn • Oberlin, KS



2cVj `fc \ZdUj Z\_X  
è SVJZVj `fO

<Zdh ZY R W^ Zj YZè g `WUad tEz\_  
RcV Wc^ `dVjVj è Rce^ ae d ZIZNz  
: Wtè d ZIZN Zl eYV dèY JRUZ X  
TRf dV WUReY R^ `X TYZUèV\_  
SVèh W\_ eYV RXVd `W&R\_U" %Z  
EYRe d h Yj h V `Wc T f dVZ X  
ac XcR^ d Wc RjJ RXVèZ

J f h `f J U\_è Z\_` d V R Sc `V\_ R c^ Z  
J f d r f J U\_è Z\_` d V j `fc WJZ X d Vè YVè Z  
AJVRd Jè f d YVjaZ



J f c 4 ^ ^ ^ f\_ Zj  
> V\_ e rj 9VRèY 4V\_ èVZ

( ) &Z # Zè) (\* + è || VWV) !! ZèS#Z SSS + YZYaJZ d^ V\_ è rj V R è Y Z T^

## KANSASflightfestival

Celebrating the Past, Present & Future of Aviation

August 26-28 • Jabara Airport • Wichita, KS



### More Everything.

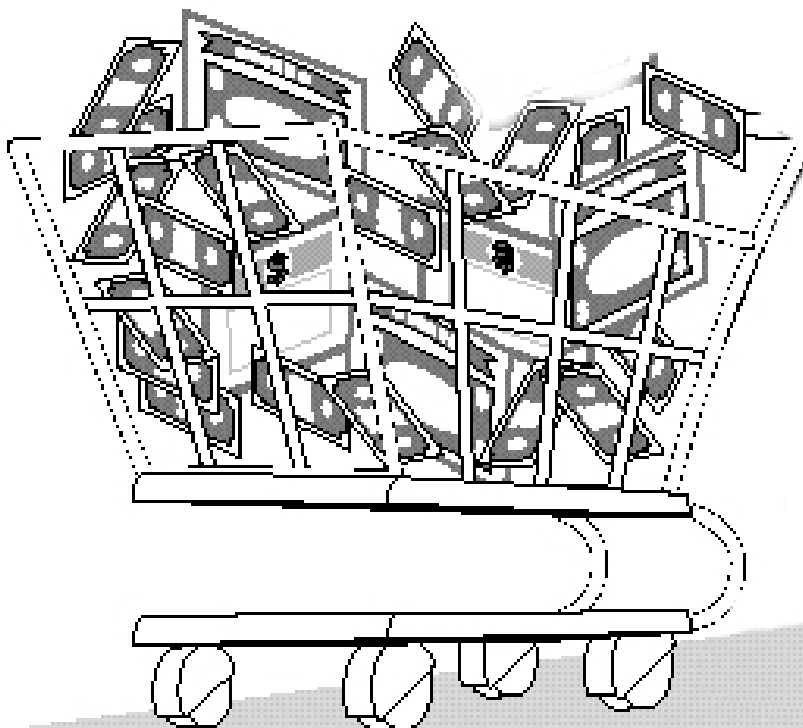
Craving more choices? Wichita's got more shopping, dining, sports, and entertainment options than ever.

See what's playing at [www.visitwichita.com](http://www.visitwichita.com).

800.288.9424

# \$1,000

# Shopping Spree



## THE OBERLIN HERALD

## KLEIN'S MOTOR ELECTRIC



AGCO  
ST 34A

**OWN ME FOR ONLY \$396 Per Mo.\***

**AGCO**  
YOU'VE GOTTA DRIVE ONE

\* 60 Mo. W.A.C.

**Klein's**  
MOTOR ELECTRIC CO.

605 West B - McCook, NE  
308-345-4580  
866-830-7300

## The Stamps

You Can't Wait to Get Your Hands On.

- PRE-INKED (NO STAMP PAD NEEDED)
- CLEANER, EASIER TO USE
- 50,000 IMPRESSIONS BEFORE RE-INKING
- DOZENS OF MODELS

**THE OBERLIN HERALD**

170 S. Penn • Oberlin, Kan. 67756 • 785-475-2206