

Voice of Decatur Community High School



By the DCHS Dictator Staff

The Dictator will normally appear every other week. However, due to spring break we may not have a school paper next week.



School Menus

March 20-24
OBERLIN SCHOOLS
 All Oberlin schools will be closed this week for spring break.

This week was a time to celebrate another of God's good gifts to His people — music. All kinds of music!

We began listening and learning about classical music, moving to the beat of jazz, and then on to country. Music binds us together in a rather magical way, that is hard to define. It opens not only our hearts but our soul to the world around us. It takes us far beyond age and time.

Monday we discovered Beethoven's difficult upbringing and how God used his hard circumstances to push him forward to become the legacy he is today. We wrote an acoustic poem about him. Walt Mosier, Irel Lohofener, Ruth Laidig, Nadine Anderson and Ellen Horn helped in writing this:

- B - Beethoven
- E - Ear Deafness
- E - Envy
- T - Time
- H - Heartache
- O - Old
- V - Vivacious
- E - Enthusiasm
- N - No night

Next we listened to and studied

Good Samaritan News

ragtime jazz ("ragtime" is a dirty word, according to Edla Olson). Scott Joplin also took a tragic situation and turned it to good with his talent. Yet Joplin died poor and alone as did Beethoven. We were surprised to learn that Joplin wrote the famous piano instrumental, "The Entertainer."

While we studied good ol' country hoedown music, we played some country trivia. We divided into two teams. Our captains were the laundry ladies, Vi Krizek and Sharon Black. We found out that Lucy Schissler once "carded" Johnny Cash while working as a bartender in Omaha. Everyone thought music sounded better on an old record player, which we had on loan from the high school. We played "Name That Singer" for the rest of Social Hour and everyone had a great time.

It is amazing how music will imprint our minds in such a profound way. We might forget what we had for breakfast, but the songs we learned in grade school come rolling and tumbling back to refresh our hearts and souls once more.

This week also included food

gifts. Thank you Sharon Black and Ruby Shuler for the delicious Rice Krispie treats (everybody's favorite) served on Wednesday. Also, thank you to Jeanette Diedrich and Hilde McGee for the wonderful cream puffs on Friday.

Anita Hirsch was grateful to have Ellen Horn, Sharon Black and Coleen Rippe helping in the activity department while Lisa Stacy, activities director, was off learning to better our busy little department. (Lisa, we're sure glad you're home.)

Recent guests: **Lucy Schissler** - Margaret Fiken, Ralph Crim, Bonnie Kein, and Rev. Terry McGuire, Atwood; and Mert

McEvoy, Joyce Dean, Jerald and Elaine Leitner; **Eva Bryan** - Detta Anderson and Donna Kelly; **Ruth Laidig** - Serena Stacy; **Dena Gillespie** - Daryl and Marge Hartzog and June Vavroch, Jennings; and Earl and Pat Hartzog, Hoxie; **Marie McChesney** - Judy Menges, Colby; **Eulaine Benda** - Leanne Pike, Ashland; **Kathryn Post** - A. Capps, Denver; **Dorothy Pryor** - Linda Smith; **Leo Mooty** - Karen and Ben Lachlez, McCook; **Mary Leman, John and Muriel Ready**, "Swede" Unger - Jerald and Elaine Leitner. Also visiting were Catherine Neal and Wayne Larson.

Fox Theater Auction

Tuesday, March 28 - 5:00pm



1202 Main St - Hays, KS

Real estate will be auctioned by Leana Garrett - broker 785.743.5508

Kisner's Auction and Appraisal Roger Kisner - auctioneer 785.623.1596

www.purplewave.com

Cattle Sales

More sales on Page 5B.

COW CAMP RANCH PRODUCTION SALE
 Saturday, APRIL 1, 2006 • 1:00 p.m.
 AT THE RANCH • LOST SPRINGS, KANSAS
 SELLING
 25 Angus Bulls • 70 Purebred Simmental Bulls
 25 Simmental x Angus F 1s • 10 3/4 Bloods
 Majority of the bulls are AI sired.
 For more information, contact:
 Kent Brunner (785) 983-4487 • Nolan Brunner (785) 258-2039
 Mark Brunner (785) 965-7168 • mcbrunner@cowcampbeef.com
 Be Part of Our Alliance - Learn More at cowcampbeef.com



24th Annual Production Sale
 Thursday, March 23
 1 pm (MST) at the ranch
 4 miles south 3 1/2 west of Redington

HC 85 Box 126, Bridgeport, NE
 308/262-0306 off 308/586-2004 eve
butchsr@hamilton.net

Request Your Catalog Today!



120 Registered Red Angus Bulls
 ...30% more marbling and 20% more REA than breed average
25 Red Angus Composite Bulls
 ...for increased fertility, vigor and profitability!

DICKINSON RANCH
 34TH PRODUCTION SALE
 FRIDAY, APRIL, 7, 2006 • 1 P.M.
 At the ranch • Gorham, KS
 SELLING
 100 BULLS • 50 REG. HEIFERS
 Simmental • SimAngus
 Red Angus • Angus
 Bulls are bred for calving ease, growth, carcass & fleshing ability.

PRIVATE TREATY
 400 Commercial Heifers
 Solid Black • 1/4 Simm 3/4 Angus
 Source Verified • Dickinson Genetics
 Fall 2006 Delivery • Pre-Contract for breeding dates and sires
 For More Information, contact:
 KIRK DICKINSON 1-888-603-BULL
www.dickinsonranch.com

Post Rock Cattle Co
 2x7
 ALL PAPERS
 ad in GDN

Light Ranch Angus Bulls
 SELLING AT
KANSAS BULL TEST
 Wednesday, April 5, 2006
 BELOIT, KS

Sires Represented:
 Summitcrest High
 Prime OH29
 CA Future Direction
 5321
 New Design 1407
 SS Traveler 6807 T510

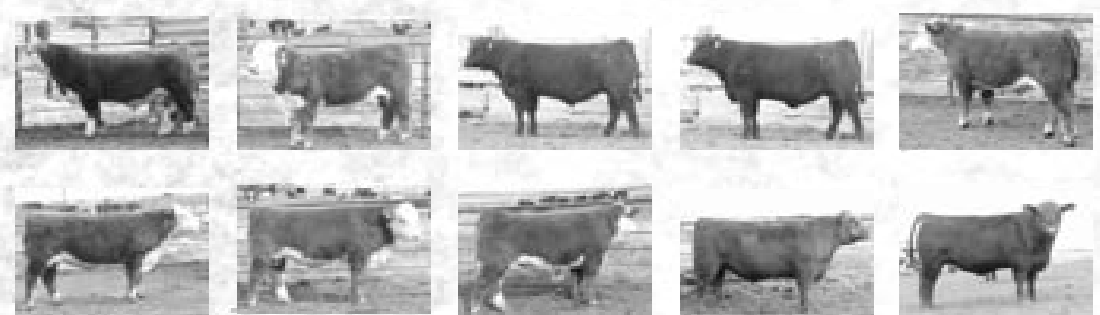
CALL FOR PERFORMANCE INFO & EPD'S
 PHIL LIGHT 580-259-6285
 PETE GIBB 580-259-6234

The Proven Source for Independently Performance Tested Bulls.....

KANSAS BULL TEST SALE #65
 April 5, 2006 • 11:30 a.m.
 Mitchell County Fairgrounds • Beloit, Kansas
SELLING TOP POWERFUL GENETIC INFORMATION THROUGH BULLS!

304 Bulls on Test - Around 170 Sell!

- Angus • Charolais • Hereford • Red Angus • Simmental • Tarentaise
- Angus/Simmental Cross • Red Angus/Simmental Cross



NEW WEBSITE
www.kansasbulltest.com

All bulls passed Breeding Soundness Exam and Semen Test
Performance measured:
 ADG, WDA, Frame Score, Adj. Yearling Wt., and Scrotal Circumference

Ultrasound Measured:
 Ribeye Area, Marbling and Backfat
Top AI Sire Sons and ET bulls
 All Bulls PI Tested Negative

For information: www.kansasbulltest.com or E-mail kbr@kansasbulltest.com

Harry Schmitt 785-373-4824 or Doug Schmitt 785-373-5025

Bull Test Station is 1 mile south of Tipton on HWY 181

Stop any time to view bulls

Sale day phone: (785)-545-8939 or (785)-738-0043

Benoit Angus

17th Annual Production Sale
 March 20, 2006

1:00 p.m.

At the ranch • 10 1/2 miles west of Mankato, Kansas

Selling 160 Bulls

Also selling sons of these sires:

- 1023
- Lead On
- Coalition
- Strategy
- Focus
- New Design 116
- 211 (New Frontier son)
- 295 (1680 son)
- 1123 (1680 son)
- 1410 (598 son)
- National (E161 son, 21 sons average WR 102)
- Power Alliance (leased by ABS, 16 sons selling)

★ Volume Discounts

★ Free Delivery (Kansas, Nebraska)

★ Ultrasound Information

★ First Breeding Season Guarantee

Check out our Web site for updates!



Benoit Angus Ranch
 Everett & Bonnie Benoit
 Rt. 1, Box 81 • Esbon, KS 66941
 (785) 725-3231
 (888) 870-2855 - Toll Free

Doug & Michelle Benoit (785) 725-6211
 Chad Benoit (785) 725-3005

E-mail: bbenoit@uscenter.net
www.benoitangus.com

Located 10 1/2 miles west of Mankato on Hwy. U.S. 36



E&B Ext 572 • DOB: 2/8/05
 Sire: EXT
 Dam: E&B 1483 Scotchman 75
 BW 1+2.3 WW 1+43 YW 1+84 SC 1+13 MILK 1+20
 IMF 1+15 RE 1+26 Fat 1+027
 \$W +22.82 \$F +26.46 \$G +8.59 \$B +31.29



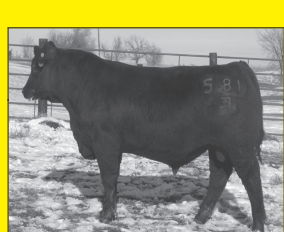
E&B E161 Precision 592 • DOB: 2/13/05
 Sire: Precision E161
 Dam: E&B 1483 Scotchman 75
 BW +2.3 WW +41 YW +86 SC 1+08 MILK +20
 IMF 1+20 RE 1+45 Fat 1+004
 \$W +20.99 \$F +29.25 \$G +15.91 \$B +39.33



E&B Retail Product 548 • DOB: 2/19/05
 Sire: Retail Product
 Dam: Sire: Bando 598
 BW +1.3 WW +50 YW +84 SC 1+73 MILK +23
 IMF 1+29 RE 1+53 Fat 1+009
 \$W +26.75 \$F +33.82 \$G +18.11 \$B +46.73



E&B 208 New Design 573 • DOB: 1/11/05
 Sire: Bon View New Design 208
 Dam: Sire: HD Duna Cornerstone 0245
 BW +.8 WW +48 YW +86 MILK +32
 IMF 1+40 RE 1+72 Fat 1+014
 \$W +24.26 \$F +27.08 \$G +13.88 \$B +36.89



E&B Future Direction 581 • DOB: 2/15/05
 Sire: CA Future Direction 5321
 Dam: Sire: B/R New Design 036
 BW 1+2.5 WW 1+44 YW 1+85 MILK 1+30
 IMF 1+40 RE 1+72 Fat 1+014
 \$W +24.26 \$F +27.08 \$G +13.88 \$B +36.89

(Dam had high-selling bull in 2005 sale, E&B Lead On #89)



E&B 1407 New Design 563 • DOB: 1/29/05
 Sire: New Design 1407
 Dam: E&B 1483 Scotchman 75
 BW +1.6 WW +46 YW +91 SC 1+10 MILK 1+28
 IMF 1+32 RE 1+34 Fat 1+014
 \$W +24.67 \$F +32.74 \$G +18.72 \$B +38.57



E&B Future Direction 530 • DOB: 1/31/05
 Sire: Future Direction
 Dam: E&B 1483 Scotchman 75
 BW +1.8 WW +39 YW +78 SC 1+14 MILK +26
 IMF 1+40 RE 1+54 Fat 1+011
 \$W +24.82 \$F +22.05 \$G +23.12 \$B +44.27



E&B Special Design 584 • DOB: 1/24/05
 Sire: WCC Special Design L309
 Dam: Sire: GAR Precision 1680
 BW +2.6 WW +51 YW +87 MILK +25
 IMF 1+16 RE 1+12 Fat 1+015
 \$W +27.41 \$F +26.36 \$G +12.19 \$B +35.50



E&B 1407 New Design 523 • DOB: 1/27/05
 Sire: New Design 1407
 Dam: Sire: Precision 1680
 BW +1.2 WW +44 YW +88 MILK +29
 IMF 1+37 RE 1+41 Fat 1+014
 \$W +25.58 \$F +30.09 \$G +24.34 \$B +44.86



E&B Exactly 520 • DOB: 1/11/05
 Sire: LD Exactly 1912
 Dam: Sire: B/R New Design 036
 BW +2.7 WW +47 YW +94 MILK +24
 IMF 1+17 RE 1+82 Fat 1+002
 \$W +22.65 \$F +35.01 \$G +18.55 \$B +42.82