

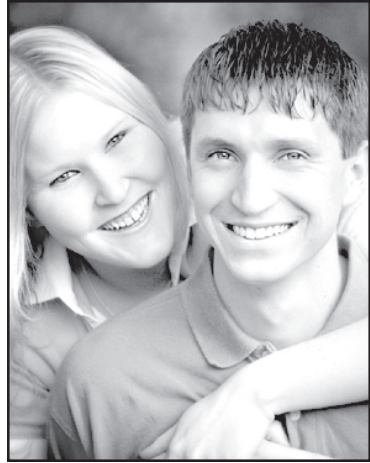
Angela Lin Bliss and Adam Jon Ketterl plan to marry on Saturday, June 16, at the First Christian Church in Atwood.

Parents of the couple are Tom and Arlene Bliss of Atwood, and David and Judy Ketterl of Herndon.

The bride-to-be is the granddaughter of Lorraine Wurm of Atwood and the late Charles Bliss, and the late Faye and Lindley (Roe) Lane.

Her fiancé is the grandson of the late Clarence and Anna Mae Ketterl and the late John and Maxine Howard.

She is a 2003 graduate of Atwood High School and a 2006 graduate of Kansas State University with a Bachelor of Science degree in accounting. She is pursuing her Master's of Accountancy, also from K-State and plans to graduate in May. She has accepted a position with Adams Brown Beran and Ball Cer-



Angela Lin Bliss, Adam Jon Ketterl

tified Public Accountants of Colby. Mr. Ketterl is a 2002 graduate of Herndon High School and a 2003 graduate of Northwest Kansas Technical College with an Associate of Applied Science Degree in automotive technology.

He is also a 2004 graduate of Wyoming Technical Institute. He is a certified master automotive technician at Dave's Oil Service Inc in Atwood.

## Deadline set for loans

The last date for filing applications for federal Emergency Disaster loans by farmers and ranchers in Rawlins, Decatur, Norton and Phillips counties hit by drought and heat last year is Tuesday.

John C. Vogt, U.S. Farm Service Agency loan manager at the Norton office, said those needing credit as a result of high temperatures, wind, heat and drought since Jan. 1, 2006, should apply at the Norton office, 11640 Pineview Drive or Box 365, Norton, Kan., 67654.

"Loans covering physical and/or production losses may be made at 3.75 percent interest," he said, "and are scheduled for repayment as rapidly as feasible."

Disaster loans covering physical losses may be used to replace instal-

lations, equipment, livestock or buildings (including homes), he said. Loans covering production losses may be used to buy feed, seed, fertilizer, livestock or to make payments on real estate and chattel debts.

"Funds can also be used for other essential operating and living expenses," he said.

An applicant must be operating a family-size farm or ranch, unable to get credit elsewhere and have a qualifying physical and/or production loss from the weather last year.

Farmers who suffered at least a 30 percent reduction to at least one cropping enterprise may have a qualifying production loss. Loans may cover qualifying losses up to \$500,000.

## Woman honored on 90th

Doris Jorn of Lincoln, Neb., was honored by her daughter, Pat Jorn of Lincoln, and her son, Gary and Harriet Jorn, Temecula, Calif., with a weekend celebration to mark her 90th birthday on Feb. 25.

Her husband, the late Doug Jorn, was born and reared at Oberlin and her family formerly lived here. Her family held a reception for family and friends Sunday afternoon at The Legends, the retirement home where she lives.

Others present included Steph-

anie and Brent Proctor and Hudson, Temecula; David Jorn, San Diego; Robert and Annie Laurie Jorn Jochums, Ventura, Calif.; Christie Jochums Teague, Maricopa, Ariz.; Bob Jochums, Duluth, Ga.; Susan Jochums Manis, Alpine, Calif.; Nancy Jorn, Evan and Mary Jorn, and Peggy Jorn Williams, Lawrence; and Karen Barnett Callahan, North Pole, Alaska.

Mail will reach her at 5600 Pioneers Blvd., Apt. 207, Lincoln, Neb., 68506-5175.

## Knitting course to be offered

Want to learn how to knit? A beginner's course will start at 2 p.m. on Saturday, March 17, with the place to be named.

There will be four two-hour classes limited to eight people. A \$15 fee includes knitting kits, yarn for practice, handouts and original patterns.

Instructor Ann Gallentine of Clayton has completed requirements as a certified knitting instruc-

tor from the Craft Yarn Council of America. She has finished all three levels of the Knitting Guild Association's Master Hand Knitting program.

During the first meeting, participants will decide on the day and time for classes.

For details or to enroll, call Mrs. Gallentine at (785) 693-4476 or (785) 475-7255 or e-mail ann@gallentine.org.

## Rotary hears forensic students

Charles Haag was program chairman at the Feb. 27 meeting of the Oberlin Rotary Club. He introduced high school English teacher Leigh Davis, who introduced some of her forensic students to give the program: Chenaniah Langness and Jacinta Carter, humorous presentation; Rory Wendelin, review of "The Bible in 30 Minutes or Less," and Jenny Hirsch and Trish Dorschhorst, who portrayed two radio per-

sonalities doing the news and advertisements from the play, "Greater Tuna."

Guests were Junior Rotarians Tyler Sauvage, who plans to attend Fort Hays State University and major in agronomy, and Katrina Wentz, who plans to attend Barton County Community College to study psychology.

Kim Langness was a guest of her husband, Rick.

## Two water meetings set

Two Town Hall Conversation water meetings will be held on Monday. The first will be at 11:30 a.m. at Sunflower Senior Center in Jennings and the second at Prairie Land Electric in Norton at 6:30 p.m.

The meetings will give those in attendance a chance to voice concerns about Watershed Restoration and Protection Strategies (WRAPS)

going in the Prairie Dog Creek/Keith Sebelius Lake Watershed.

Meals will be provided at no charge. Reservations would be appreciated by today. Call Twila Dizmgang at the Norton County Conservation district at (785) 877-2623, extension 37. Those planning to attend may also bring a water sample and see what is in their water.

## Club News

### Club holds guest night

Pi Alpha Club met Feb. 26 at the Sappa Valley Manor for a potluck supper and guest night. Hostesses were the program committee, Marty Olson, Gerry Neff and Pat Wright. Mrs. Wright gave devotions titled, "Empty Pockets."

Following the dinner, Mrs. Olson portrayed "Howie" for a fun version of "Deal or No Deal" for entertainment. Lucky contestants were Mrs. Wright and Nora

Bearley.

Present were 14 members and guests, including Walter Meitl, Don Neff, Dave Olson, Neal Russell, John Wright and grandson, John Stoecker of Oakley, Montine Alstrom and Dorothy Alstrom. Virginia Spratling received the hostess gift.

Hostesses for the March 12 meeting will be Mrs. Spratling with Eunice Martin assisting.

### Club plans pizza party

Maverick 4-H Club met Feb. 11 at the Pizza Hut. The club earned a pizza party since we were the top sellers of 4-H Cookbooks in the state.

During the meeting we discussed the ski trip that is planned during spring break week. We welcomed the Chambers family as new members to our club.

We also decided to do a patri-

otic song for our group activity during 4-H Day.

Practice was to be every Tuesday at the Catholic Church basement until 4-H Day. The 4-H Day sign-up sheet was passed around to sign up for individual activities.

The next meeting will be during 4-H Day on March 9 at the Oberlin Elementary School.

### Garden lovers discuss plants

The Garden Lovers Lunch Club met Feb. 27 at The LandMark with 10 members present.

Shirley Shields presented the program which covered several topics on getting ready to order seeds for spring planting. The topics were, How to Read a Seed

Catalog, How to Read a Seed Packet and What Can Be Done Now in Your Garden.

A discussion was also held on shrubs and roses that would be hardy in northwest Kansas. Sandy Fair shared several web sites on gardening.

### Spring luncheon March 14

Widows and Friends will meet for a spring luncheon at 11:30 a.m. on Wednesday, March 14, at the LandMark Inn.

Reservations should be made

by Monday by calling the LandMark at (785) 475-2340.

The February luncheon was canceled due to the weather.

## Singers to perform

The K-State Singers will perform at 2 p.m. on Sunday in the Morgan Theatre at The Gateway, sponsored by the Oberlin Arts and Humanities Commission.

Since 1954, the Singers have been the vocal ambassadors for Kansas State University, performing around the world. Membership is limited to nonmusic majors, including 14 vocalists, a percussionist, a bass guitarist, a pianist and a sound technician.

Gerald Polich, associate professor of music, is the director. Mardell Maxwell, a junior in business management from Junction City; Amy Aadalan, a senior in secondary education; and Jacob Wieneke, a junior in mechanical engineering, are the managers.

Admission will be by season ticket or \$10 for adults and \$4 for students at the door. For details, call Ella Betts, (785) 475-3557 or Mary Henzel, (785) 475-3329.

## New Arrivals

### Atleigh Summer Nelms

Brooke and Mitchell Nelms of Omaha are the parents of a daughter, Atleigh Summer, born Feb. 18, 2007. She weighed 7 pounds, 1 ounce, and was 20 inches long. Grandparents are Mark and Kim McConville, and Merritt and Susan Nelms, Indianola, Neb. Great-grandparents are Eileene Grose, Oberlin; Richard and Luella McConville, McCook; and Max and Donna Nelms, Bartley, Neb.



Atleigh Nelms

### Carsen Matthew Farr

Brittani and Kylie Farr have a new baby brother, Carsen Matthew, born Feb. 16, 2007. He weighed 7 pounds, 14.5 ounces and was 21 inches long. Parents are Matthew and Tiffanie Farr. Grandparents are Kent Ploussard and Brenda Ploussard.



Carsen Farr

Great-grandparents are Joyce Ploussard, Lee Ploussard, Bob and Betty Salem, and Gwen Farr, and the proud uncles are Aaron Ploussard, Eric Farr, and Wiley Farr.

### Kacie Jean Jones

Wade and Leslie Jones of Oberlin are the parents of a daughter, Kacie Jean, born Feb. 23, 2007, at the Norton County Hospital. She weighed 7 pounds, 7 ounces and was 18 1/2 inches long. She has two sisters, Hannah, 4, and Morgan, 2. Her grandparents are Mike and Denise Jones, and Kent and



Kacie Jones

Deb Brown, Oberlin. Great-grandmothers are Charlotte Parks, and Peggy Jones, Hill City; Norma Brown, Oberlin; and Ruby Phifer, Goodland.

Put a classified ad to work for you. Call 475-2206 and place your ad today!

## Couple plans fall vows

Farah Wendelin and Kris Erickson plan to be married in October.

Parents of the couple are Patrick and Elvera Wendelin, Lindsborg; Roxie Erickson, Manhattan; and Delbert Erickson, Atwood. Karl Wendelin, Herndon, is the grandfather of the bride-to-be, and Bernice Martin of Oberlin is her fiancé's grandmother.

The couple graduated from Decatur Community High School in Oberlin. She is a graduate of Bethany College at Lindsborg, and the University of Nebraska Medical Center, Omaha, and is a medical technolo-



Farah Wendelin, Kris Erickson

gist at Lindsborg Community Hospital in Lindsborg.

Mr. Erickson holds degrees from Fort Hays State University. He is the executive director of Riverside Plaza, an independent living facility in Salina.

## Agricultural help line open

An agricultural help line is available to assist farmers and ranchers with storm-related needs. Established in 2000, it provides free confidential assistance, support and referrals to rural families.

Charlie Griffin, director of the Kansas Rural Family Helpline, a program of the School of Family Studies and Human Services at Kansas State University's College of Human Ecology, says his phone has been ringing nonstop since winter storms hit parts of western Kansas in late December and early January.

The helpline's response to storm-related needs is being provided in partnership with Kansas Agricultural Mediation Services.

Forty-four counties in western Kansas affected by the storms quali-

fied for assistance through the Federal Emergency Management Agency. The storms caused livestock loss and damaged power lines and poles.

Mr. Griffin said the Helpline provides access via referral to a resource network of health providers, churches, financial and legal advisers, farm and family mediation services, family educators and agricultural production and agribusiness specialists.

It also provides access to local, state and federal agencies that may be able to help rural families.

"For people who don't know where else to turn, we can help," he said.

Call (866) 327-6578 or e-mail farmksu@humec.ksu.edu.

## Exhibit set at Logan museum

The exhibit "Spirit of the Mask" will be on display from this Friday, through Sunday, April 22, at the Dane G. Hansen Memorial Museum in Logan.

The exhibit, owned by Carla Hanson of Shawnee, includes over 100 masks from five continents, 40 countries and nearly a dozen Native American tribes.

Ms. Hanson grew up in Water-

ville. She took many anthropology classes at Kansas State University, and was enlightened by her experiences in meeting people from other cultures. In August 1992 she purchased her first ethnic mask, and her collection has grown into the hundreds.

There is no admission charge. For details, call (785) 689-4846 or go to www.hansenmuseum.org.

## Educator nominees sought

The Education Committee of the McCook Area Chamber of Commerce said that nominations are being accepted for the annual Educator of the Year award. It is made available by Allen Strunk, former owner and editor of the *McCook Daily Gazette*.

The nomination form is available at the Chamber office or all area schools. Educators or administrators from area K-12 schools, or any

part thereof, are eligible for the award. Once nominated, the nominee is given the opportunity to apply for the award which will be scored and tallied by the Education Committee.

Deadline for nominations is March 15. The monetary award will be presented at the high school graduation where the award winner is employed.

## Foundation offers free trees

Ten free white flowering dogwood trees will be given to each person who joins the National Arbor Day Foundation during March.

The free trees are part of the non-profit foundation's Trees for America campaign.

"White flowering dogwoods will add year-round beauty to your home and neighborhood," John Rosenow, the foundation's president, said. "Dogwoods have showy spring flowers, scarlet autumn foliage, and red berries which attract songbirds all winter."

The trees will be shipped postpaid at the right time for planting be-

tween March 1 and May 31 with enclosed planting instructions. The six to 12-inch trees are guaranteed to grow or they will be replaced free of charge.

Members also receive a subscription to *Arbor Day*, the foundation's monthly publication, and "The Tree Book" with information about tree planting and care.

To become a member and receive the free trees, send a \$10 contribution to: Ten Free Dogwood Trees, National Arbor Day Foundation, 100 Arbor Avenue, Nebraska City, Neb., 68410, by March 31, or join on-line at www.arborday.org.

## St. Patrick's Dance

Saturday, March 17

9 p.m. to 12 p.m.  
Mobile Music  
Machine

FREE  
DANCE

Oberlin American Legion

Oberlin, Kansas



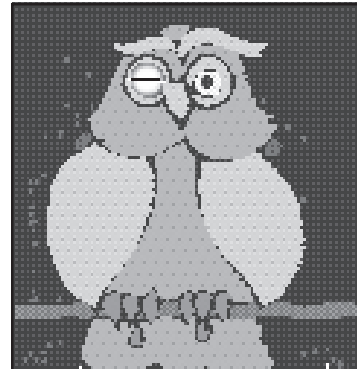
Happy Birthday  
Crazy  
Grandpa!

Love,  
Bodie, Colten and Bella



Please join the family of  
Keith and  
Mary Lou  
Olson  
in a card shower to celebrate their  
50th Anniversary  
Cards will reach the couple at:  
RR1 Box 51  
Herndon, KS 67739

Internet tonight 475-2206



Running a business without advertising is like winking at a girl in the dark. You know what you're doing, but she doesn't!

Dave Bergling  
THE OBERLIN HERALD  
(785) 475-2206