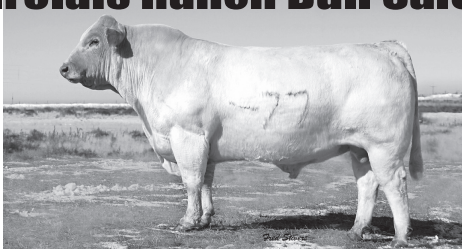


BULL SALES


29th Annual Hubert Charolais Ranch Bull Sale
 Tuesday, April 1, 2008
 1 p.m., at the ranch,
 Monument, Kansas



Selling 70 bulls
 All semen tested
 Ultrasound data available
 Most polled
 Low birthweights
 Many 700 lb. weaning wts.

For more information, contact David Hubert, Oakley, Kansas 785-672-3528

**Great Females!!!
 Great Females!!!
 ARE Sired BY
 Dusty Prairie
 Ranch Bulls**



THIS IS WHAT DPR GENETICS CAN DO FOR YOU!!!

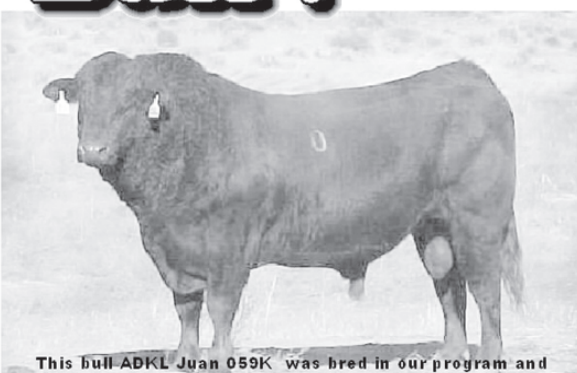
- The Best Black Females in the Industry!
- DPR females give you better disposition
- DPR females have more fertility
- DPR female udders are top quality
- DPR is selling the entire 2007 heifer crop

Grand Champions of
 Great Western Beef Expo 2006
 Res. Champion of
 Great Western Beef Expo 2004-2002
 Graded 100% Choice
 and Gained 3.95#

**150 HEAD
 APRIL 5, 2008**
 Selling 50 Big Thick Yearling Bulls
 100 Top Quality Yearling Amerifax Heifers
DOUG HARSH - BARTLEY, NE

Dusty Prairie Ranch
308-695-3500
www.dustyprairieranch.com

This is Bull! Sat., March 29, 2008
 1:00 CST
 Oakley Livestock
 Oakley, Kansas



This bull ADKL Juan 059K was bred in our program and

**Moser Limousin
 Annual Bull Sale**

Using the "proof of the past" for the "progress of the future".

42 BULLS
 (24) LIM1 & (18) LIM1-FLEX BULLS
 (37) 2 YR. OLDS, (5) YEARLINGS
 95% Black - 90% Polled
 Many Homozygous Black

Dan & Kristy Moser & family
 Winona, Kansas

For questions or to request a catalog
PHONE: 785-846-7888
FAX: 785-846-7874
 e-mail: eatmobeeff@st-tel.net

**38 YEARS OF "MEATING" THE
 NEEDS OF THE COMMERCIAL AND
 PUREBRED PRODUCER.**

**Sale Day Phone
 785-672-4100**

PELTON'S Clockwork Precision

A Genetically Complete Red Program!

**IA and IB Red Angus
 Bulls and Females**


**Simmental and
 SimAngus
 Bulls and Females**

**All Fully
 Guaranteed!**


**Our
 Two Breed Program
 Provides Yield AND Grade
 as Consistent as Time
 Itself!**

**Ultrasound Data,
 Carcass EPDs &
 Performance Data**

Join our other
 customers who take
 advantage of our
Extensive ET Program!




104 CAT A Red Angus



3T CAT A Red Angus

Mark your calendars for our
 15th Annual Sale
March 26, 2008
 1:00 pm at LaCrosse, Kansas
 Sale Barn
**150+ Bulls
 120+ Females**



221S F1 (1/2 Red Angus, 1/2 Simmental)

208 (1/2 Red Angus, 1/4 Simmental)

Contact us for your catalog today!

Pelton
 Simmental / Red Angus
 Lynn Pelton • Burdett, Kansas
 (620) 525-6632 • lpelton@gbta.net

**2007 BIF
 Seedstock Producer
 of the Year!**

Heterosis at Work!

Be sure to visit
 our new website:
www.peltonsimangus.com

SCHURRTOP RANCH

YEARLING BULL SALE

200 Angus & Charolais Bulls Sell

Fri., Mar. 28 ● 1 p.m.

at Tri-State Livestock, McCook, NE



41+ Years Of Performance & Gain Information
 & 37 Years Of Carcass Merit Bred In For Generations
www.schurrtop.com



40842 E. Farnam Rd., Farnam, NE 69029

John Schurr
 308-569-2520

Marty Schurr
 308-362-4941

Jerry Schurr
 308-569-2476

L Bar L Angus

**10th Annual Prime Cut on the Hoof Sale
 Performance-Tested Registered Angus Bulls**

Annual Bull Sale March 27, 2008

Imperial Auction Market • Imperial, NE • 12:30 MDT



Selling:
20
 Two-year-old Bulls
40
 Yearling Bulls
20
 Yearling Heifers

Write or Call for a Sale Book!



Todd & Donalyn Hasenauer
 37703 S. Hwy. 25
 Wallace, NE 69169
 308-387-4454
 Cell: 308-530-3568
lbarlangus@yahoo.com

Featured Sires:

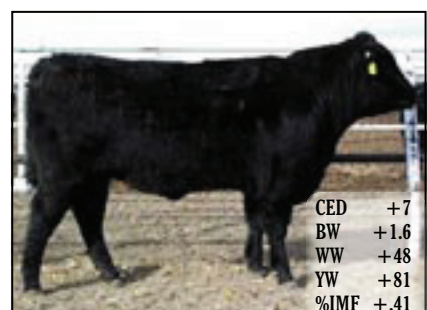
- ~ Basin Max 602C ~
- ~ Boyd On Target ~
- ~ BT Right Time 24J ~
- ~ KCF Bennett Performer ~
- ~ Boyd New Day ~
- ~ New Frontier ~

To View Sale Book Online: www.lbarlangus.com



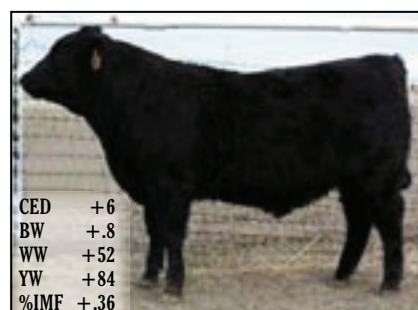
Annual Production Sale
 Wednesday, March 26, 2008 • 1:00 MST
 Sharon Springs, Kansas

SELLING: 73 Bulls
20 Commercial Heifers



760 - Retail Product son

CED +7
 BW +1.6
 WW +48
 YW +81
 %IMF +.41
 RE +.43
 \$B +47.54



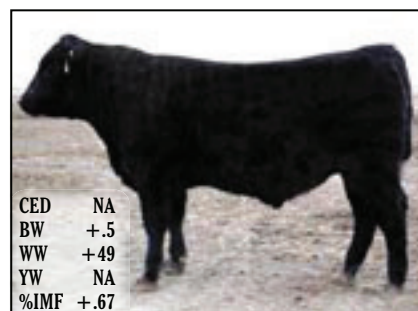
7222 - 112 son

CED +6
 BW +.8
 WW +52
 YW +84
 %IMF +.36
 RE +.22
 \$B +45.38



7156 - 878 son

CED +5
 BW +1.4
 WW +42
 YW +83
 %IMF +.07
 RE +.24
 \$B +37.51



711 - Midland son

CED NA
 BW +.5
 WW +49
 YW NA
 %IMF +.67
 RE +.55
 \$B NA

A genetic program designed to maximize your profits by balancing traits for performance, maternal, calving ease and carcass merit.

A.I. Sires: Future Direction, 1407, 112, 616, 2V1, Retail Product, Preeminent, Predestined, In Focus, Objective, TC Total, Midland, D806



Visitors always welcome! Call for a sale book!

Dan and Becky Larson
 195 Rd 26, Sharon Springs, KS 67758
 (785) 891-3748 • (785) 891-3711 - fax
larangus@pld.com • www.larsonangusranch.com

