

# May is Beef Month

## WE SALUTE OUR BEEF PRODUCERS

**Did you know?** Cattle represented 60% of the 2006 Kansas agricultural cash receipts (Kansas Ag Statistics). Cattle generated \$6.25 billion in cash receipts during 2006. (Kansas Ag Statistics). Kansas ranked seventh nationally in beef cow numbers as of January 1, 2008 with 1.51 million head. (Kansas Ag Statistics). Kansas first nationwide in commercial cattle processed with 7.7 million head in 2007. (Kansas Ag



### Oberlin Livestock Auction, Inc.

*We Salute the Area  
Cattle Producers!*

Now in our  
24th Year  
of serving the  
Cattle Industry in  
Decatur County

**Cattle Sales  
Monday  
At Noon**

### Oberlin Livestock Auction, Inc.

Sale Barn Phone — 785-475-2323  
For consignment or to view livestock, call:  
Jerry Fortin 785-475-2457  
Daren Fortin 785-475-8912

### Salute to Beef Producers!

**Quality Retail Beef & Pork  
Custom Processing & Curing**

We Process Your Meat the Way You Want It!

**Ben-Lee Processing, Inc.**  
N Hwy 25, Atwood, KS 785-626-3732

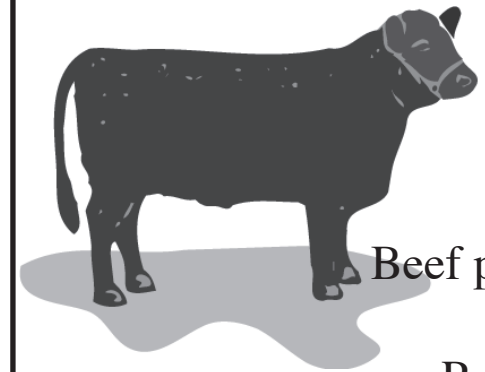
### DECATUR COUNTY FEED YARD



Serving local farmers  
and ranchers for 37 years

Warren Weibert, Owner/General Manager

**785-475-2212**  
[www.decaturfedyard.com](http://www.decaturfedyard.com)



Beef producers are  
a  
Rare Breed!

### Fredrickson

### Insurance Agency

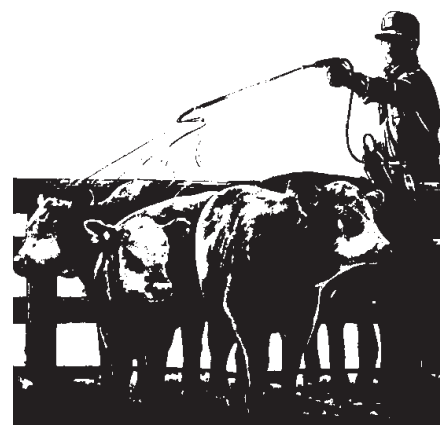
Your Home-Owned Insurance Agency

*"For all your Farm Insurance needs."*

**We sell insurance,  
but specialize in service!**

183 S. Penn — Oberlin, Kansas — 785-475-3883

Serving the  
Area's Beef  
Producers  
with  
Dependable  
Service  
for 11 years



We run between 10,000 - 11,000 head annually.

### Sauvage Feed Yards LLC

RR1, Box 27 A  
Danbury, NE 69026  
785-896-2246

**Millwright & Crane Service**  
**DOAK**  
construction, inc.

800-638-9183  
SID W. DOAK  
308-345-3194

Millwright and  
Crane Service  
of  
McCook,  
Nebraska

#### ATTENTION

#### GRAIN ELEVATOR MANAGERS

We have 4 highly skilled crews with over 40 years  
of experience in EMERGENCY SERVICE!

We can help keep your grain facility  
running and up-to-date.

Do you need a new elevator leg or  
repairs to existing equipment?

We are an authorized dealer for all brands of elevators legs...  
DRAG...CONVEYORS...AUGERS...GEAR...BOXES...MOTORS...  
BEARINGS...STEEL BUILDINGS...GRAIN BINS...AERATION  
COMPLETE STEEL INVENTORY

• 50 Ton Crane - 173 • Pole Truck Service • Welding Service •  
Skid Loader Service

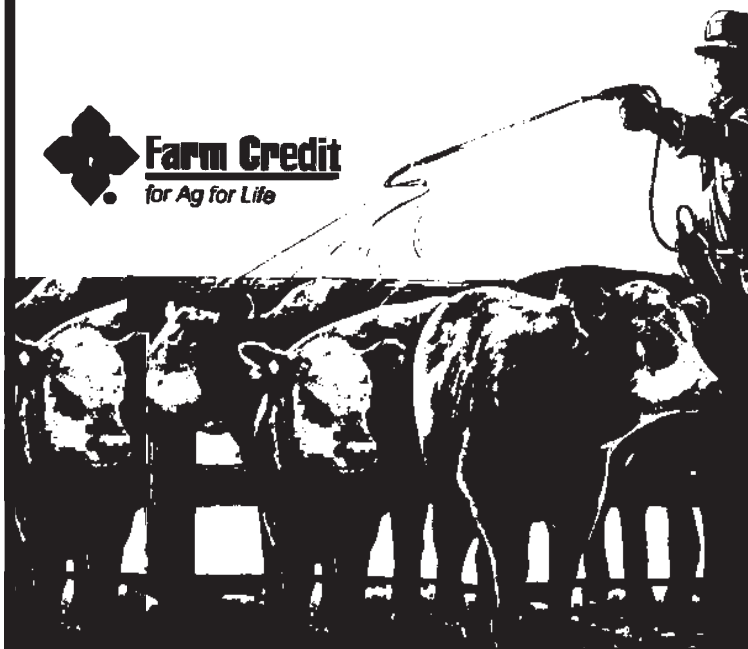
Call us at: 1-800-638-9183  
1-308-345-3194

### Farm Credit of Western Kansas

*Serving the Beef Industry  
with a variety of  
financial services.*

**We Salute the Men and Women  
of the Beef Industry.**

375 S. Range — Colby, Kansas  
1-800-657-6048



**Offering Only the Highest in Quality**  
At Willow Creek Meats, we take pride in providing you the  
highest quality corn-fed beef available anywhere...hand selected  
just for you! We offer whole, half or quarter beef selections.  
Everything we offer is source and age verified with  
NO added artificial hormones.

**Quality and Service • Special Items**  
**Call us Today**  
One of our team members will be more than happy to help you!

**Willow Creek Meats**  
Trusted Quality from  
Producers You Know

P.O. Box 280  
McCook, NE 69001  
1-877-4WCMEAT  
(1-877-492-6328)  
308-345-2949  
[www.willowcreekmeats.com](http://www.willowcreekmeats.com)

**KETTERL'S**  
**5 K ANGUS**

**Registered Black Angus  
Yearling Bulls  
Bred for Excellent  
Growth and Calving Ease**

**A.I. Sires include:**  
**Net Present Value      Safe Lead**  
**GAR Integrity            In Focus**

**Vernon Ketterl (785) 475-3636**  
**Todd Ketterl (785) 475-2427**

**OUR HATS ARE OFF  
TO THE  
MEN AND WOMEN  
OF THE  
CATTLE BUSINESS.**

*See us for all your insurance needs.*

State Farm Insurance Companies

Ken Schultz, Agent  
126 S. Penn — Oberlin  
785-475-2911

**Like a good neighbor,  
State Farm is there.**