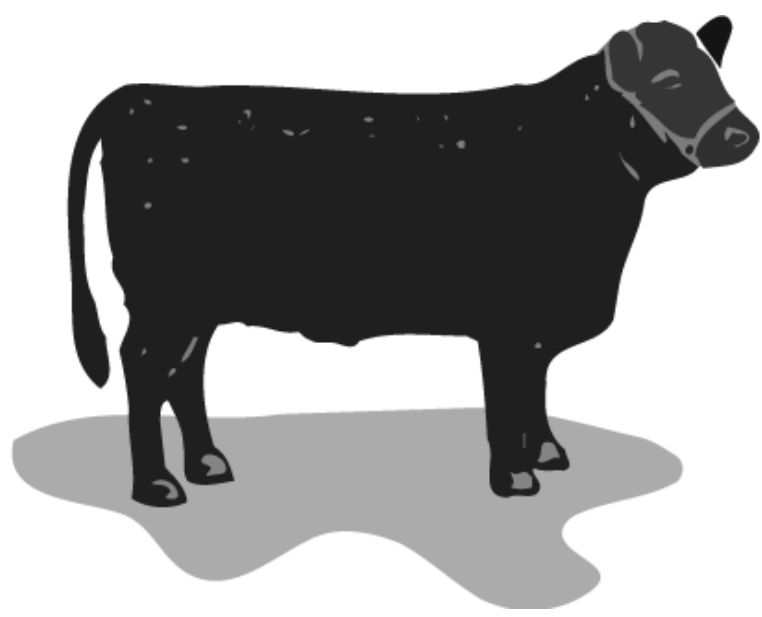


BULL SALES



Please see additional sales on page 4B

RICK NEMETH (130) 18 MO. OLD REGISTERED ANGUS BULLS FOR SALE ON FARM • 40+ EMBRYO BULLS

LUDELL, KANSAS
LOCATION:
13 Miles Northeast of Atwood, Kansas



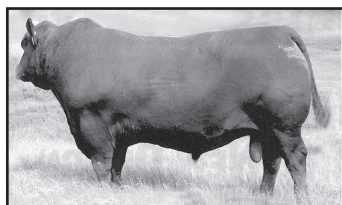
S A V 004 Hold'em 4452
Hold'em was one of the top selling in the 2005 Schaff Sale. He sires thick, easy doing cattle.



FREY'S 486R
Frey's 486R is a bull that covers all the bases. His calves are small at birth that grow quickly.



MUSCLE
Muscle is a big, deep, wide soggy bull that is very easy keeping. His calves are very small at birth.



WAR FORE FRONT
This Fore Front sons calves are born very easily and grow rapidly with great thickness.



FREYS PROUD DESIGN 410P
410 is a very easy calving bull, with tons of performance. His calves ratioed very high.

2.1 55 22 98
AVERAGE EPD'S
ON NEMETH BULLS

Sale Bulls are in Top 3% of Breed for both Weaning and Yearling Weights.

785-322-5055 or 785-626-4309

BAR S RANCH
PRODUCTION SALE
THURSDAY, MARCH 12 • 12:30 p.m.
At The Ranch • Paradise, KS
SELLING
• 35 Two-Year-Old Angus Bulls
• 90 Yearling Angus Bulls
• 25 Charolais Bulls, Yrlgs., & 2's
• 150 Yearling Angus Comm. Heifers
• 4 Quarter Horses
(785) 998-4335 • (785) 998-4386

Lazy H Ranch Kansas & Smoky Hill Charolais
7th Annual Bull sale
Sunday, March 1, 2009 • 1 p.m. cst
HAYES LIVESTOCK MARKET CENTER HAYES KANSAS
Selling 75+ Angus & Charolais Bulls
Yearlings • Fall Yearlings • Two Year Olds
SIRES INCLUDE: Traveler 004, Raven, Predestined, 878, Onward, Net Worth, In Focus, EXT
FREE BOARD TIL MAY 1
FREE DELIVERY TO SURROUNDING STATES
FOR MORE INFORMATION
MARK ROHR 785-432-1107 • MAURICE ROHR 785-625-4650
Call To Request Your Sale Catalog

DICKINSON RANCH PRODUCTION SALE
FRIDAY, MARCH 27, 2009
AT THE RANCH GORHAM, KANSAS
SELLING 90 SIMMENTAL, SIMANGUS, ANGUS & RED ANGUS BULLS
ALSO SELLING 50 REG. SIMANGUS YEARLING HEIFERS
• Genetics from a cowherd that is required to calve on the range, even first calf heifers.
• Genetics from a cowherd with longevity, 13-15 yr. old cows still raising calves.
• Genetics from low input female that are also proven for carcass traits and value.
• Big ribeye bulls with above average marbling and tenderness.
• Genetics from a cowherd that has for 40 yrs. selected for feedlot gain & feed conversion.
Genetics That Will Maximize Your Profits & Optimize Your Resources!
KIRK DICKINSON • 888-603-BULL • www.dickinsonranch.com

KETTERL'S
5 K ANGUS
Registered Black Angus Yearling Bulls
A.I. Sires include: Tested free AM
Special Addition In Focus
ISU Imaging Power Design
TC Total Lutton 1831
Vernon Ketterl (785) 475-3636
RR 2 Box 115A, Herndon, KS 67739
Todd Ketterl (785) 470-7208
RR 3 Box 84, Oberlin, KS 67749

Southwest Nebraska Angus Association
45th Annual Spring SALE
DATE: FRIDAY, MARCH 13, 2009
LOCATION: 1:00 P.M., CST
Tri-State Livestock (WEST BARN) MCCOOK, NEBRASKA
40 Yearling & Fall Bulls
CONSIGNORS
Ron Bridgmon, McCook, NE
Ely Angus, Roger & Jim Ely, McCook, NE
Jason Gohl, Culbertson, NE
Limestone Angus, Gary Hoffman, Indiana, NE
Logans Angus Farm, Bob Logan, McCook, NE
Pettera Angus, Randy & Desree Pettera, McCook, NE
Randy Pettera, Sale Manager,
38699 Dr 718
McCook, NE 69001 • 308-345-2516
E-Mail: petterad@ocsmccook.com
Tracy Harl — Auctioneer
Sale Day Phone: 308-345-3493
All guarantees are between buyer & seller

BEAR MOUNTAIN ANGUS
Same Program ~ New Location
Selling 98 Angus & Charolais Bulls • 12-2yr. olds • 50 Coming 2's • 36 Yearlings

Lot 13 • On Target X 878 B W Y M Marb \$B 2.4 54 105 25 .20 43.08	Lot 45 • 2 878 X Foreman B W Y M Marb RE \$B .8 52 92 24 .18 .30 40.21	Lot 3 • 112 X Ultravox B W Y M Marb RE \$B 3.0 59 101 24 .60 .15 58.39
Lot 92 • Slasher X Impressive B W Y M Marb RE 3.3 68 102 19 .09 .40	Lot 63 • Marathon X Fame B W Y M Marb RE \$B 3.1 58 100 24 .60 .11 55.58	Lot 1 • 112 X Ultravox

Developed on an all forage, non-starch diet
Bidding Available Through LiveAuctions.TV
Brian Stoller & Tiffany Skow
35789 Hwy. 6, Palisade, Nebr. 69040
308-285-3313 (home & fax) • Brian cell: 308-737-6213
Email: bearmtngus@msn.com • www.bearmountainangus.com

Tuesday, March 3rd 1 P.M. CST
Tri-State Livestock in McCook, Nebraska

Benoit Angus
20th Annual Production Sale • Thursday March 19th, 2009 • 1 pm CDT
At the ranch 10 3/4 miles West of Mankato, KS on US Hwy 36

E&B OBJECTIVE 864 #16135127 	> A super herd bull prospect by 1023 out of a beautiful Traveler 004 1st calf heifer. DBR/95, DWR/109. Granddam and great granddam are excellent donors for us. BW I+1.1 WW I+55 YW I+96 Milk I+23 \$W 30.36 \$B 50.64	E&B 1023 PRECISION 852 #16135133
E&B OBJECTIVE 822 #16135112 	< A powerful herd bull by Objective out of a tremendous 1st calf heifer by New Frontier. BR/100, WR/112. Grand-dam is Lady Precision 15 (full sister to 1023) 4 generations of dams were all excellent donor cows of ours. BW I+1.5 WW I+62 YW NA Milk I+25 \$W 33.62 \$B 68.24	E&B 1023 PRECISION 843 #16135127
E&B PREDESTINED 838 #16136427 	> Excellent 1023 son from a proven Power Alliance donor cow that was flushed through the summer at Cross Country Genetics in Manhattan, KS. Dams BR 3/98, WR3/108, YR2/111. BW I+1.4 WW I+52 YW I+94 Milk I+25 \$W 28.98 \$B 48.51	E&B BLUEPRINT 874 #16135147
E&B 1961 BANDO 893 #16140468 	< One of the most powerful bulls that will sell this year. Dam is a 1st calf heifer with a WR /117. Last three generations of dams were all top donors for us. BW I+3.4 WW I+65 YW I+106 Milk I+27 \$W 29.93 \$B 58.36	

**> One of our 1st sons from our ABS herdsire E&B Blueprint 691. Dam is a picture perfect Lead on daughter. DBR 2/93, DWR 2/104, DYR 2/108.
BW I+1.5 WW I+49 YW I+86 Milk I+26
\$W 29.37 \$B 43.90**

< This Predestined son is a full brother to **E&B Asti 659** bought by Koupal Angus of South Dakota in 2007. Dam Lady Precision 15 is a full sister to Precision 1023. DBR 3/99, WR 3/105, YR/103, IMF 43/105, RE 43/100. 7 full brothers sell, as well as 5 maternal brothers by EXT and 1 by Foresight!
BW I+2.5 WW I+46 YW I+91 Milk I+28
\$W 23.94 \$B 63.43

VOLUME DISCOUNTS • SIGHT UNSEEN GUARANTEE
FREE DELIVERY • CARCASS ULTRASOUND DATA
FERTILITY TESTED • SCROTAL MEASUREMENTS
REPEAT BUYERS DISCOUNT • BULLS FED NO CREEP
See the entire offering at www.benoitangus.com

www.benoitangus.com • For sale catalog call 888-870-2855 • Visitors Always Welcome

Everett Benoit 621 Hwy 36 Esbon, KS 66941 (785) 725-3231 • Toll Free (888) 870-2855	Doug Benoit 699 Hwy 36 Esbon, KS 66941 (785) 725-6211 • Cell (785) 545-6806	Chad Benoit 471 R Road Esbon, KS 66941 (785) 545-3005 • Cell (785) 545-8095
--	--	--