

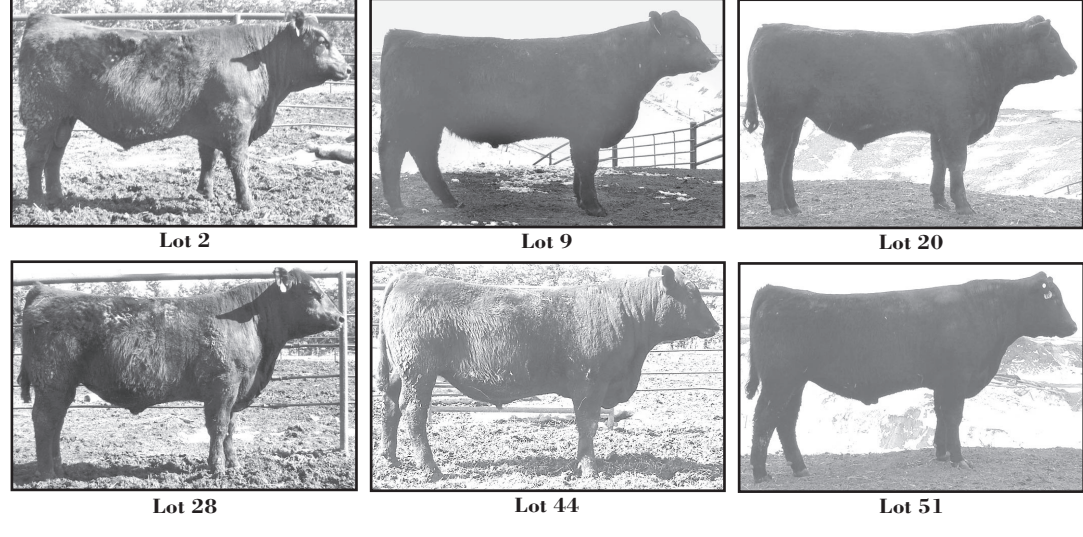
BULL SALES



.....
BAR S RANCH
 PRODUCTION SALE
 THURSDAY, MARCH 12 @ 12:30 p.m.
 At The Ranch • Paradise, KS
SELLING
 • 35 Two-Year-Old Angus Bulls
 • 90 Yearling Angus Bulls
 • 25 Charolais Bulls, Yrags, & 2's
 • 150 Yearling Angus Comm. Heifers
 • 4 Quarter Horses
 (785) 998-4335 • (785) 998-4386

BLACKROSE ANGUS

*Selling 65 Angus Bulls
and 45 Heifers*



Saturday
March 7, 2009
1 p.m. CST
TriState Livestock Commission
 West Barn
McCook, NE

Other Sires Represented at the sale include:
 SAV8180 Traveler 004
 Summitcrest High Prime 0H29
 SAV Net Worth 4200
 Son's and Grandson's
 HARB Windy 702H
 N BAR EXT

Blackrose Angus
 Rob Spencer and Family
 308-345-3377
 308-340-3211

B B Angus
 Chase Beeby and Family
 308-895-2417
 308-340-6438

KETTERL'S
5 K ANGUS
Registered Black Angus Yearling Bulls
A.I. Sires include: Tested free AM
Special Addition In Focus
ISU Imaging Power Design
TC Total Lutton 1831
Vernon Ketterl (785) 475-3636
 RR 2 Box 115A, Herndon, KS 67739
Todd Ketterl (785) 470-7208
 RR 3 Box 84, Oberlin, KS 67749

Bar Arrow Cattle Co.
 & Spring Valley, LTD
19th ANNUAL PRODUCTION SALE
Tuesday, March 10, 2009
 1:30 p.m. at Spring Valley near Agra, KS
 We emphasize carcass traits without sacrificing Performance,
 Calving Ease, and Functional Females
 Featuring 140 Angus, Balancer, and Gelbvieh bulls and
 13 PB/Balancer Heifers
★ ALL BULLS DNA TESTED FOR CARCASS & TENDERNESS
Angus & Balancer Sires: In Focus, Genetics by Design, Connealy
 Overtime, Predestined, Bando 1961, Shear Force, Foresight,
 Analyst, Performer, and New Design EXT 974
Gelbvieh Sires: Nagurski, Stout, Maximum, Landmark, Cowtown
 Call for a catalog or go on-line at www.springvalleyfarms.com
 You May Watch & Bid On The Cattle at LiveAuctions.TV

Bar Arrow Cattle Co. Spring Valley, LTD
 Stuart Jarvis Building Better Beef
 Phillipsburg, KS 67661 Lynn & Lori Ferguson
 785-543-5177 785-638-2857 ★ Agra, KS
 bararrow@ruraltel.net svferg@ruraltel.net

Rock'n R Angus
 Plainville, KS
 21st Annual
Bull & Female Sale
Mon. March 9, 2009
 Sale starts @ 1:00 p.m.
 at the ranch.

Selling 285
 Black & Red Angus
 Lots include:
 15 Black & Red Angus Bulls - 2 yr. old
 150 Black Angus Bulls 18 mo.
 45 Red Angus Bulls 18 mo.
 20 Black Angus Spring 1st calf heifers,
 AI Bred
 15 Black Angus Spring 3-4 yr. old; calving
 10 Black Angus open spring heifers
 10 Red Angus Spring 3-4 yr. old; calving
 10 Red Angus open spring heifers
 10 Black Fall yr. bred heifers

Black Sires Represented:
 Twin Valley Precision E161
 Mytty In Focus
 PVF New Time 506
 Wk Addiction
 MC 2500
 QLC Contractor
 Lau Decade

Red Sires Represented:
 Holden Vista 541
 Batterson Bellagio 53P
 HLH Buster
 PIE Countdown 5010
 PIE Buckshot 5102
 PIE Deep Creek 120
 PIE Redmond 3170

Gain Tested
 Ultrasound Data
 Semen Evaluated
 1st Breeding Season Guarantee
 Free Delivery
 Volume Discount

Sale information or catalog contact:
 Ron Hrabe
 785.623.8054 mobile
 785.434.2101 day
 email: rrhrabe@ruraltel.net
 Website: www.rocknrangus.com
 catalog online:
www.angusjournal.com

This sale will be broadcast live on the internet
DVAuction
 Broadcasting Real-Time Auctions
 Real time bidding & proxy bidding available.

DICKINSON RANCH PRODUCTION SALE
FRIDAY, MARCH 27, 2009
 AT THE RANCH GORHAM, KANSAS

SELLING 90 SIMMENTAL, SIMANGUS, ANGUS & RED ANGUS BULLS
ALSO SELLING 50 REG. SIMANGUS YEARLING HEIFERS

- Genetics from a cowherd that is required to calve on the range, even first calf heifers.
- Genetics from a cowherd with longevity, 13-15 yr. old cows still raising calves.
- Genetics from low input female that are also proven for carcass traits and value.
- Big ribeye bulls with above average marbling and tenderness.
- Genetics from a cowherd that has for 40 yrs. selected for feedlot gain & feed conversion.

Genetics That Will Maximize Your Profits & Optimize Your Resources!
 KIRK DICKINSON • 888-603-BULL • www.dickinsonranch.com

Southwest Nebraska Angus Association
45th Annual Spring SALE
DATE: FRIDAY, MARCH 13, 2009
LOCATION: 1:00 P.M., CST
Tri-State Livestock (WEST BARN)
MCCOOK, NEBRASKA

40 Yearling & Fall Bulls

CONSIGNORS
 Ron Bridgmon, McCook, NE
 Ely Angus, Roger & Jim Ely, McCook, NE
 Jason Gohl, Culbertson, NE
 Limestone Angus, Gary Hoffman, Indiana, NE
 Logans Angus Farm, Bob Logan, McCook, NE
 Pettera Angus, Randy & Desree Pettera, McCook, NE

Boyd New Day 8005 EXT
Ironwood New Level
Mytty In Focus
TC Total 410
SAV Net Worth 4200
Morgans Direction
SitzAlliance
SAV 8180 Traveler 004
SS Objective T510 0T26
TC Grid Iron 248
S A V Bando 0699
B/R Destination 928-535
BT Right Time 24J
Gardens Prime Star
Hoff Limited Edition SC 594
Connealy Danny 5398
Quaker Hill Objective 3J15


Randy Pettera, Sale Manager,
 38699 Dr 718
 McCook, NE 69001 - 308-345-2516
 E-Mail: petterad@ocsmccook.com

Tracy Harl — Auctioneer
 Sale Day Phone: 308-345-3493

All guarantees are between buyer & seller


Benoit Angus

20th Annual Production Sale • Thursday March 19th, 2009 • 1 pm CDT
 At the ranch 10 3/4 miles West of Mankato, KS on US Hwy 36




E&B OBJECTIVE 864
#16135127

> A super herd bull prospect by 1023 out of a beautiful Traveler 004 1st calf heifer. DBR/95, DWR/109. Granddam and great granddam are excellent donors for us.
 BW I+1.1 WW I+55 YW I+96 Milk I+23
 \$W 30.36 \$B 50.64




E&B 1023 PRECISION 852
#16135133

< A powerful herd bull by Objective out of a tremendous 1st calf heifer by New Frontier. BR/100, WR/112. Grand-dam is Lady Precision 15 (full sister to 1023) 4 generations of dams were all excellent donor cows of ours.
 BW I+1.5 WW I+62 YW NA Milk I+25
 \$W 33.62 \$B 68.24




E&B OBJECTIVE 822
#16135112

> Excellent 1023 son from a proven Power Alliance donor cow that was flushed through the summer at Cross Country Genetics in Manhattan, KS. Dams BR 3/98, WR3/108, YR2/111.
 BW I+1.4 WW I+52 YW I+94 Milk I+25
 \$W 28.98 \$B 48.51




E&B 1023 PRECISION 843
#16135127

< One of the most powerful bulls that will sell this year. Dam is a 1st calf heifer with a WR /117. Last three generations of dams were all top donors for us.
 BW I+3.4 WW I+65 YW I+106 Milk I+27
 \$W 29.93 \$B 58.36




E&B PREDESTINED 838
#16136427

> One of our 1st sons from our ABS herdsire E&B Blueprint 691. Dam is a picture perfect Lead on daughter. DBR 2/93, DWR 2/104, DYR 2/108.
 BW I+1.5 WW I+49 YW I+86 Milk I+26
 \$W 29.37 \$B 43.90



E&B BLUEPRINT 874
#16135147

< This Predestined son is a full brother to **E&B Asti 659** bought by Koupal Angus of South Dakota in 2007. Dam Lady Precision 15 is a full sister to Precision 1023. DBR 3/99, WR 3/105, YR/103, IMF 43/105, RE 43/100. 7 full brothers sell, as well as 5 maternal brothers by EXT and 1 by Foresight!
 BW I+2.5 WW I+46 YW I+91 Milk I+28
 \$W 23.94 \$B 63.43




E&B 1961 BANDO 893
#16140468

> An excellent Bando 1961 from a 1st calf heifer out of E&B NEW DESIGN 3133 (036 son/1023's dam). This bull weighed 806 on weaning day (09/20/08) and his dam weighed 1052 lbs with and excellent body condition.
 DWR/111. BW I+1.5 WW I+51 YW I+84 Milk I+26 \$W 31.39 \$B 36.14

VOLUME DISCOUNTS • SIGHT UNSEEN GUARANTEE
FREE DELIVERY • CARCASS ULTRASOUND DATA
FERTILITY TESTED • SCROTAL MEASUREMENTS
REPEAT BUYERS DISCOUNT • BULLS FED NO CREEP

See the entire offering at www.benoitangus.com

www.benoitangus.com • For sale catalog call 888-870-2855 • Visitors Always Welcome



Everett Benoit
621 Hwy 36
Esbon, KS 66941
(785) 725-3231 •
Toll Free (888) 870-2855

Doug Benoit
699 Hwy 36
Esbon, KS 66941
(785) 725-6211 •
Cell (785) 545-6806

Chad Benoit
471 R Road
Esbon, KS 66941
(785) 545-3005 •
Cell (785) 545-8095