



A Cheyenne County Favorite Hilltop General Store

*"The Cutest Little Grocery Store on Highway 36"
(Originally Built In 1947)*

*Providing the area with the freshest fruits
and vegetables, frozen foods and meats,
canned goods, pastries, ice cream, snacks,
drinks and more.*



A small store with a big city
selection and even bigger smiles.
We're waiting to meet you
so stop on by.

Right on Highway 36
and Benton Street in
St. Francis, Kansas

Open 7 Days a Week • 7 a.m.-7 p.m.
785-332-2277

2ND BEGINNINGS THRIFT STORE

Bird City's stop
for quality used
clothing, furniture,
household and
much more.



Wednesdays: 9 a.m - 9 p.m.
Friday: 9 a.m. - 6 p.m.
Saturdays: 9 a.m. - noon

309 S. Bird Ave. • Bird City • 785-734-2443 or 734-2728

The Uptown Meat Market and Deli (Downtown St. Francis)



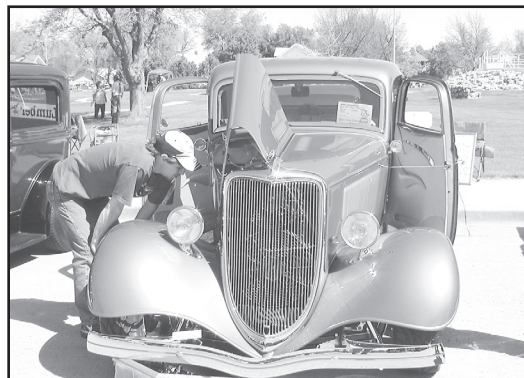
Providing the area with fresh meat,
poultry, seafood, deli meats and cheeses,
deli sandwiches, rotisserie chicken, fresh
breads, desserts, ice cream, snacks, drinks and more.

*Located on the east end of Main Street near the beautiful
Sawhill Park in historic downtown St. Francis.*

—Come Visit Us—

413 E. Washington • St. Francis • 785-332-2236

★ Experience Cheyenne County For a Day or for a Lifetime!



Cheyenne County



DEVELOPMENT CORPORATION

- ★ Strategic Tri-State Location
- ★ Affordable Land, Homes & Business Locations
- ★ Active Family or Retirement Lifestyle

Chuck and Diane Kribs, co-directors
P.O. Box 255, 107 W. Washington, St. Francis, KS 67756
785-332-3508 e-mail: chuck@ccdcks.com