



NEIL NORMANDIN WATCHES as the new CT is delivered to Goodland Regional Medical Center. Gary Farris is pictured in the fork lift and other maintenance staff member are pictured on the left - Curt Sawatsky and Jerry Siercks.

Photos by Tina Goodwin/The Goodland Regional Hospital

# Telemedicine

By Sharon Corcoran

The Goodland Star-News  
slcorcoran@nwkansas.com

The future is here at Goodland Regional Medical Center, as patients are being diagnosed and treated by physicians from afar, using the same type of screen people use to watch their favorite television programs, patient records are being converted to electronic files and a 16-slice computed tomography machine produces clear three-dimensional images which can be sent to doctors via computer.

The center became a founding member of the Midwest Cancer Alliance in 2008 and has been adding features to its telemedicine program, which offers patients the opportunity to be diagnosed by, talk with and be treated by specialists via a system of television monitors, video cameras, speakers, microphones, hardware and software.

The hospital replaced its 10-year-old computed tomography machine with a 16-slice Phillips Medical unit, said Administrator Jay Jolly, increasing the speed and resolution of the

images.

The pictures are beautiful and the resolution terrific, he said, and the digital images can be sent to doctors at their computers so they don't have to walk down to the radiology lab to see them. They can even log in from home to view the images, he said, saving them some late-night trips to the hospital.

The hospital has been working on converting all patient records to digital files which doctors can access from laptop computers, Jolly said, and which can be shared by all the departments within the hospital and the clinic. The Goodland Family Health Center switched to digital records last summer, he said, and that has gone so well no one would say they want to go back to paper.

The system is now being installed in the laboratory, he said, and the next step is to make the switch for patients staying in the hospital. Then electronic records will be available hospital-wide, he said, with the lab,

See GOODLAND, Page 18

**Your American Family Agent.**  
Consider American Family for your insurance needs.



**Curt Wahlmeier Agency**  
111 W Washington  
Norton, KS 67654  
(785) 877-5802 Bus  
(800) 569-0142 Toll Free  
cwahlmei@amfam.com



American Family Mutual Insurance Company and its Subsidiaries  
Home Office - Madison, WI 53783

BC-213676 - 4/09

**James E. Reeves**  
— DPM —  
**PODIATRIST**  
**FOOT SPECIALIST**

## TOTAL CARE OF THE FOOT

- General Podiatry
- Children's Foot Care
- Diabetic Foot Care
- X-Rays & Physical Therapy
- Podiatric Sports Medicine & Injuries
- Reconstructive Foot Surgery
- Outpatient Surgical Technique
- Medicare Assignment Accepted

**Rawlins County Health Center**  
785-626-3211

**Norton County Hospital**  
785-877-3351

**Cheyenne County Hospital**  
785-332-2104

**Citizens Med Center/Colby Med Center**  
785-462-7511 — 785-462-4814

## Logan Manor Community Health Service



*Skilled Nursing Home Care  
Assisted Living, Home Health,  
HCBS, Meals on Wheels*

108 S. Adams, Logan, KS  
Phone 785-689-4201  
Fax: 785-689-7411

# expands services

GOODLAND, from Page 18

pharmacy and clinic all tied in.


It is something the hospital has been working on a little at a time, he said, because it is an expensive process. It used to be that the “bricks and mortar,” the building, was where all of the money went, he said, but now information systems are where a lot of money goes.

Goodland’s hospital is ahead of most, he said, but the federal government is wanting all hospitals to catch up. Part of the economic stimulus bill, he said, is money for hospitals, especially in rural areas, to convert to electronic records. The goal, he said, is for all hospital records to be electronic by 2014.

Paper filing and physical files of x-rays take a lot of space, he said, and the electronic files are more secure and also allow for a more efficient use of time.

The telemedicine program and electronic records go hand in hand, Jolly said, allowing doctors to treat patients without being in the same room and allowing them access to patient records and lab results even if they are not at the hospital.

In the past year, a \$40,000 donation from the Northwest Kansas Area Medical Foundation to University of Kansas Endowment to support the KU Center for Telemedicine and TeleHealth allowed the KU Center and the Goodland hos-



- Beds 25 as critical access hospital.
- Revenue 2008 \$11.5 million
- Loss 2008 (\$113,813)
- County money \$390,600 from property taxes. (By resolution every three years, the hospital can levy up to 6 mills. Presently at 5.47 mills.)
- Doctors Three physicians, one nurse practitioner, a physician assistant and 47 consulting physicians.
- Phone (785) 890-3625.

pital to implement high definition technology and Intelemage, cutting-edge radiology service technology.

See GOODLAND, Page 19



JESSICA BENNETT (FOREGROUND), Medical Assistant intern, works with Manuela Garza, Medical Assistant at Goodland Family Health Center, on the electronic medical records system. (NOTE: Jessica Bennett is not currently an employee, she was working as an intern at the time this photo was taken)

Photo by Tina Goodwin/Goodland Regional Medical Center

## Surgical Associates of Hays, P.A.

2501 East 13th, Suite 7 \* Oak Park Medical Complex \* Hays, KS



Michael B. Lasley, M.D.



Ross E. Stadalman, M.D.

**Service Provided In:** Hays, Hoxie, Jetmore, La Crosse, Oakley, Osborne, Plainville, Quinter, Ransom, Russell, Scott City and WaKeeney

### PRACTICE LIMITED TO GENERAL SURGERY

- |                      |                   |
|----------------------|-------------------|
| Colonoscopies        | EGD's             |
| Hernia Repairs       | Breast Surgery    |
| Gall Bladder Surgery | IV Port Insertion |
| Laparoscopic Surgery |                   |

### In-Office Surgeries

- |                                   |                      |
|-----------------------------------|----------------------|
| Carpal Tunnel                     | Biopsies & Excisions |
| Vasectomies                       |                      |
| Laser Treatment for Skin Lesions  |                      |
| Consultations and Second Opinions |                      |

**NEW PATIENTS WELCOME**

*No referral necessary  
Call for questions regarding surgery  
or an appointment*

# 1-800-794-2691

*“Surgical Associates of Hays, P.A. – Across from Hays High School”*

# Goodland expands telemedicine services

**GOODLAND, from Page 18**

And more improvements to the process are coming, Jolly said, as the hospital expects to have grant money from KU to add further high definition technology this summer. The infrastructure for high definition is in place, he said, along with one high definition camera. The hospital plans to add two more high definition cameras along with other improvements with the grant money, he said.

The telemedicine program, which began with child psychology services, has expanded to include radiology, child behavioral services, geriatric psychology, oncology and a pediatric dietitian.

Treatment for cancer patients is already starting to change, Jolly said, with patients working with doctors from KU, both in person — Dr. Gary Doolittle, the professor of medicine in the division of hematology/oncology at KU Medical Center, comes out here once a month — and through telemedicine.

Patients have more choices, Jolly said, since they can work with their own doctors and with oncology nurses and specialists from KU. It provides a system of care for cancer patients, he said, rather than just consultations with individual doctors.

“We’re part of the KU cancer program,” Jolly said, “which has been developed so there is consistency. For example, if a patient needs

radiation, I don’t see us offering that any time soon, but they would be in the same system of care if they went to Kansas City. Information and resources are connected.”

Shared knowledge between the cancer center and the partner hospitals will work its way into the system, he said, so all the hospitals will have access. It will be connected through the National Cancer Institute, giving all the hospitals access to information on the most promising treatments even while they are still in clinical trials.

Besides Goodland, partner hospitals are in Hays, Hutchinson, Pittsburg, Topeka, Manhattan, Kansas City, Olathe, Leavenworth, Garnett and Lee’s Summit and Chillicothe, Mo.

The hospital at 220 W. Second St., on Goodland’s northwest side, built in 1972 for \$2.5 million, has served the area for three and a half decades. The main entrance is off Sherman Avenue, with the emergency entrance on Maple Drive.

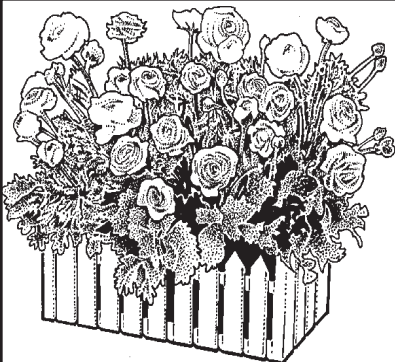
Services the hospital offers include laboratory, diagnostic imaging, physical and respiratory therapy, pharmacy, surgery, dietary, speech therapy and audiology and emergency care.

The hospital is supported by visiting doctors who expand the capabilities of the resident staff. It began offering appointments with visiting specialists in the mid-1970s and its program has become one of the largest in the Tri-State area. There are nearly 50 medical specialists in 20 fields coming to the hospital.



**JAMIE SNYDER, MEDICAL ASSISTANT to Dr. David Younger at Goodland Family Health Center, demonstrates the electronic medical record system to a group of medical assistant students from the Northwest Kansas Technical College.**  
Photo by Tina Goodwin/Goodland Regional Medical Center

**We encourage you to support your local merchants and medical services. These people put money back into the community, and are the foundation for our continued success.**



Miracle-Gro premium potting soil \$5 <sup>97</sup>	
All purpose potting soil \$1 <sup>79</sup>	Premium cypress mulch \$3 <sup>99</sup>

**Stanley**  **Hardware**

149 S. Penn—Oberlin— 785-475-2331



The Road to Wellness in Northwest Kansas

**SHERIDAN COUNTY HEALTH COMPLEX**

- Hospital • Hoxie Medical Clinic
- Long Term Care Center • Assisted Living

**Hoxie Medical Clinic**

**John France M.D. - Kaylee Watkins, ARNP-C**

**785-675-3018**

**826 18th ~ Hoxie, KS**

**Selden Community Clinic**

**Kaylee Watkins, ARNP-C - OPEN WEDNESDAYS!!**

**785-386-4380**

**112 N. Kansas ~ Selden, KS**



These honors have one thing in common:



Quality health care at Poudre Valley Health System.

Poudre Valley Health System is a recipient of the **Malcolm Baldrige National Quality Award**.

Poudre Valley Hospital has been named a **Top 100 Hospital** five years in a row, 2003-2007.

Medical Center of the Rockies is the only Colorado Hospital to receive the **Beacon Award**.

Poudre Valley Hospital has been designated a **Magnet Hospital** since 2000.

*We're here for you.*

POUDRE VALLEY HEALTH SYSTEM

# Cheyenne County Hospital

## Improving Health through Access to Quality Care!

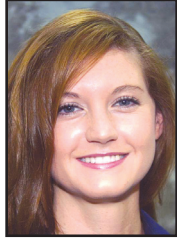
*Providing all your family health care and needs in a Friendly & Caring Environment*



Dr. Miller



Dr. Allard



Kristle Raile, PA-C



Tyler Raile, PA-C

### Aquatic Therapy



Hospital front desk



Dr. Allard with newborn Dailey and mother, Dana Rose



Kristle Raile does a baby wellness exam

## Services at Cheyenne County Hospital

- \* Obstetrics
- \* Aquatic Therapy pool/Physical Therapy
- \* Ultrasound (Abdomen, OB/GYN, Vascular, Echos)
- \* CT Scan
- \* Computerized Radiology
- \* Laboratory
- \* 24-Hour Emergency Room
- \* Acute Care and Swing Bed
- \* MRI - Friday's of each week
- \* Mammography - once a month
- \* Outpatient Surgery

## Specialty Clinics

- Cardiology — Dr. Warren (treadmills, echos, carotids & pacemaker checks)
- Ophthalmology — Dr. Uyemura (Cataract surgery)
- Dermatology — Dr. Johnson
- Orthopedist — Dr. Saba
- Podiatrist — Dr. Reeves (Hammer toes, bunions & other foot surgeries)
- Oncology — Dr. Rubinowitz
- Surgeries — Dr. Frankum (Hernia, gall bladder, appendectomy, EGD, colonoscopies, breast biopsies, incision biopsies and other outpatient surgeries)
- Epidurals — Kim Zwegardt, CRNA/Surgical Anesthesia



Cheyenne County Hospital  
"The Shining Star of Rural Healthcare!"

**Cheyenne County Hospital**  
785-332-2104

www.cheyennecountyhospital.com  
(On-Line bill pay, Nursery photos,  
e-cards plus many more options)

### Cheyenne County Clinic-St. Francis

785-332-2682 or 888-278-0234

Monday-Thursday: 8 a.m.-6 p.m.

Friday – 8 a.m.-4 p.m.

Saturday – 9 a.m. – noon (Walk-ins only)

### Cheyenne County Clinic

**Bird City**

785-734-2306

Monday-Friday 9 a.m.-noon

### Cheyenne Co. Health Department

Monday – Bird City

Tues. & Thursday – St. Francis 8:30 a.m.-4:30 p.m.

or by appointment 785-332-2381

Basement of the Cheyenne County Clinic

- ♣Healthy Start Program ♣Immunization program ♣Child & Adult Health
- ♣Vision & Hearing screening ♣Children fluoride treatment
- ♣Early detection works program ♣Blood glucose & blood pressure screenings
- ♣Diabetic Education contact ♣SRS access point ♣Hemoglobin screenings

# Many services available in Goodland

Medical services available in Goodland cover a breadth of fields, including a hospital, clinics, pharmacies, exercise and long-term care facilities.

Goodland Regional Medical Center, 220 W. Second, is an critical access hospital with 25 beds and a specialty clinic featuring more than 30 visiting doctors in 20 fields. The specialists, who come from Denver, Colorado Springs and Hays, include bone, heart, general surgery, eye, lung, allergy, skin, endocrine, digestive tract, nerve, foot, cancer and ear, nose and throat doctors.

The hospital has a dietician, Sarah Linton; occupational therapist, Larissa Coon (who is serving in Iraq); social worker, Mindy Greene; and a speech therapist, Lisa Paxton, on staff. A radiologist from Professional Radiology Services, based in Dodge City, reads X-rays.

To make an appointment with a visiting doctor, call (785) 890-6030.

The hospital operates the Sherman County ambulance service as Northwest Kansas Emergency Medical Services and transports patients by air with Eagle Med, located at Renner Field, the Goodland municipal airport. For emergency medical help call 911.

The Goodland Family Health Center, oper-

ated by the hospital, has three family practitioners, Dr. David Younger, Dr. Travis Daise and Dr. Mo Shafei, an internist. Jacque Jorgensen, a nurse practitioner, works in the clinic, along with a physician assistant, Lindsay Taylor.

Fred Waters of McDonald offers substance abuse care. Jack Lucas provides physical therapy out of the hospital.

Two nurse practitioners, Sondra Krayca and Janna Eisenbart, have their offices at Pioneer Health, 910 Main. Their number is 890-7950.

Medical Arts Pharmacy, 202 Willow Road near the hospital, has full prescription services and a drive-up window for its clients. Owner Cesar Miller is the main pharmacist. The store is open from 9 a.m. to 6 p.m. Monday through Friday and their number is 890-5111.

Goodland Wal-Mart SuperCenter, 2160 Commerce Road, has a pharmacy with three pharmacists open Monday through Saturday from 9a.m.-6 p.m. Contact them at 899-2266.

There are two sources for primary dental care in Goodland. Goodland Dental Arts, 504 Main, has dentists Dr. Terry Imel and Dr. Megan Pearce. Their number is 899-6222. Dr. James Baker has his office at 1009 Main and his phone

See SERVICES, Page 23



JANIE VASQUEZ CERTIFIED PHARMACY technician at Medical Arts Pharmacy of Goodland counts out pills to fill a patient's prescription. This is one of two places in Goodland to fill prescriptions.

Photo by Pat Schiefen/The Goodland Star-News



## DOC'S ON CALL

1005 S. Range - Suite 200 - Colby, KS

**Dr. Slavens • Andy Rose, PA-C • Lindsey Clark, PA-C**

**- Board Eligible Family Practice - Adult & Family Medicine**

- Obstetrics - Geriatrics - Preventative Care
- Chronic Disease Management - Pediatrics
- Anesthetist - Minor Surgeries


**WALK-IN TIMES:**  
**MONDAY-FRIDAY**  
**7 A.M. - 9 A.M. & 5:00 P.M. - 7:00 P.M.**

*Health professionals available 24 hrs a day, 7 days a week for after hour concerns and questions.*

# 785-460-8000

## WARD DRUG STORE


### THE FAMILY HEALTH CENTER




- Free Prescription Delivery & Mail Outs
- Free Tax & Insurance Records
- Free Blood Pressure Checks
- Diabetic Supplies/Shoes/Socks
- Copy/Fax Services
- In Store Digital Photo Processing

***We bill for all major insurance carriers, including Medicare and Medicaid.***

Monday - Friday 8:30 - 6:00 • Saturday 8:30 - 3:00







**1-800-698-5757**  
**Local: 785-475-2285**  
 Nights & Emergency  
 785-475-3947



*Kurt Vollertsen*  
*Russell Stover,*  
*Candies*

142. S. Penn • Oberlin, KS

# Many other services available in Goodland

## SERVICES, From Page 22

number is 890-2562. Dr. Chris Lovell has an office at 1014 Main offering oral surgery and orthodontics on Wednesday and Thursday about every other week. He has an office in Golden, Colo., and comes out some weeks to provide service in Goodland. Call the office at 899-3025.

Three optometrists provide eye care: Dr. David F. Schnee, 601 East U.S. 24 at 899-5501; Dr. Mark Wahlmeier at Vision Source of Colby and Goodland, 1102 Broadway Ave. at 899-3654; and Dr. Ryan Neuman at the Neuman Vision Care, 919 Main, at 890-3937.

There are four chiropractic clinics: Clifton Porterfield at 2233 Caldwell and 899-2500; A.L. Galden at 1119 Walnut and 890-2076; Patrick Gleason of Gleason Chiropractic at 1015 Main and 899-2225; and Brett Poling of Poling Chiropractic at 1109 Main and 728-7282.

Britany Pettibone-Murray of Britany's Natural Therapy (Acupressure) at 1616 Main offers massage therapy and acupressure. Her number is 890-6746. Toby Cooper and Jean McKenzie, both message therapists, work out of 1015 Main.

See SERVICES, Page 23



SERVANDO HERNANDEZ GOES THROUGH his regular exercise program in the weight room of the Goodland Activities Center. The center provides facilities and programs to help people to stay fit. It also has an exercise equipment room, a dance studio, aerobics classes, a room for TaeKwon Do, gym for volleyball and basketball and racquet ball courts. The center also runs the recreation program for the City of Goodland.

Photo by Pat Schiefen/The Goodland Star-News

# Today's Best Country

# KFNF

# 101.1

# TODAY'S COUNTRY

Proud to be your

# Local

# Radio

# Station

Today's Best Country

[www.plainsradio.com](http://www.plainsradio.com)

# Services include pharmacies, others

## SERVICES, From Page 23

Cooper's number is 349-8269 and McKenzie's number is 728-7003. Jessica Freimuth offers message therapy out of Klip 'N Kurl Salon at 1120 Main and 899-3942.

Reiki Master Jordie Mann offers Reiki at the Klip 'N Kurl Salon, 1120 Main. Call (719) 342-7723 or 899-3942. Treatments are scheduled on Mondays.

The Sherman County Good Samaritan Center, 208 W. Second, offers 48 skilled nursing beds and an Alzheimer's unit with 12 beds. Their number is 890-7517.

Located on West Eighth Street, Wheat Ridge Retirement Community offers assisted living care with 50 rooms. It has 10 independent housing units in duplexes. For information call 899-0100.

The Sherman County Health Department, 1622 Broadway, provides immunizations, blood pressure checks and Women, Infants and Children nutrition care

for the county. Their number is 890-4888.

Goodland Home Health, 655 E. 22nd, owned by Sue McCracken, a registered nurse, phone (785) 890-7658; L & C Home Health Agency, 160 E. Second, Colby at (785) 468-7444; and Good Samaritan Home Health Care, 820 S. Denison, St. Francis, at (866) 365-3588 provide home health care service to Goodland residents.

Meals on Wheels delivers meals to people at their homes cooked by the hospital kitchen. Contact the hospital at 890-3625.

Lincare, 1013 Main, supplies home oxygen and medical equipment. Call 899-6848. Hearing aids and maintenance are available from Precision Hearing Service, 1208 Main, at 899-3166.

Golden West Skills Center, 108 Aspen Road, offers a ResCare program for the mentally and physically handicapped and also has group homes.

High Plains Mental Health, 722

Main, has three staff therapists and two case workers who handle patients in Sherman, Cheyenne and Wallace counties. High Plains handles a 20-county program from its headquarters in Hays.

Meier Clinic offers counseling services at the First United Methodist Church, 12th and Sherman. Make appointments by calling (888) 725-4642, based in California. Angie Witman also has Rural Counseling Service, 1610 Main, at (785) 460-7588.

The Thomas County Alcohol and Drug Abuse Council, 1523 W. Fourth in Colby, provides substance abuse counseling one day a week at the Sherman County Courthouse. Sarah Brown is in Goodland on Tuesday.

Twelve-step self-help programs available include Alcoholics Anonymous at (785) 890-3023 or (785) 399-2353, Al Anon at 890-3023, Adult Children of Alcoholics at (785) 821-4277 or (785) 8212862, Narcotics Anonymous

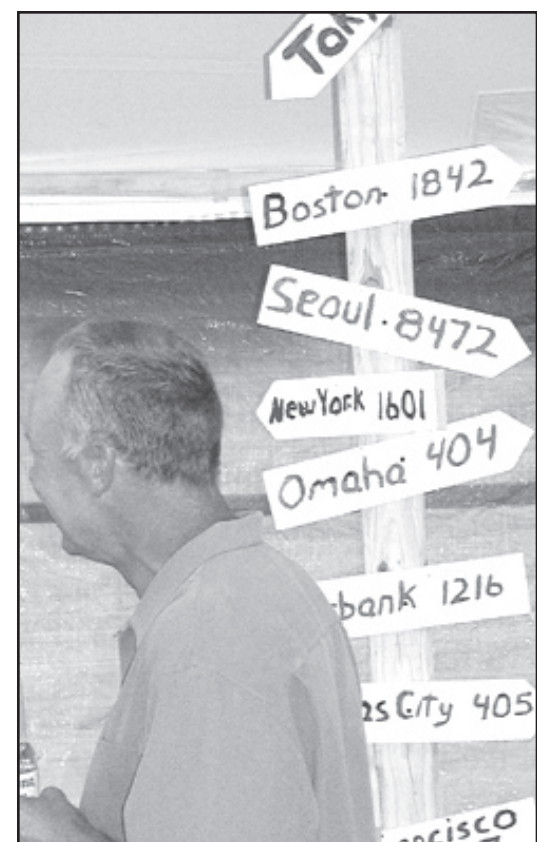
at (785) 890-8369 and Emotions Anonymous.

The Goodland Activities Center, 808 Main, offers a weight room, racket ball courts, basketball and volleyball courts, exercise room and gym and dance rooms. The center, a nonprofit membership facility, handles city and county recreation programs for kids and adults. Their number is 890-7242.

Changing Lifestyles, 1214 Main, owned by Pat Howe, offers exercise programs and equipment for a complete workout and is available at all hours.

**To keep with the MASH tradition the Slice of Life tent city included the mileage pole showing directions to various cities and the mileage from Goodland.**

Photo By Tom Betz  
The Goodland Star-News



**COMING SOON!**

## FAIRVIEW ESTATES ASSISTED LIVING

### 1 & 2 bedroom apartments

- Weekly housekeeping/linen service
- Utilities paid except telephone/cable
- Main meal/light evening meal
- Attached garages
- 24 hour emergency call system
- Social/leisure activities

**Independent Living for Independent people!**

## FAIRVIEW ESTATES RETIREMENT COMMUNITY

1630 Sewell Ave. • Colby, KS • fairview@st-tel.net • (785) 462-2154



Breathe a Little Easier®

# AeroCare

**Providing quality products and services that can help you enjoy a more active lifestyle.**

**Denis Stahlecker  
Branch Manager**

349 14th St., Burlington, CO  
(719) 346-7356  
Toll Free (800) 304-2492  
www.aerocareusa.com

Convenient, Easy and Affordable Solutions for Respiratory Care:

- \* Liquid Oxygen
- \* Home Oxygen Therapy
- \* Oxygen Concentrators
- \* Other Home Equipment
- \* CPAP
- \* BPAP

**5 Good Reasons  
To Call on Our  
Professional Pharmacy**

1. **Same Day Mail-Out Service**
2. **Free Local Delivery**
3. **Service After Business Hours Phone 785-475-2123**
4. **COMPETITIVE PRICES**
5. **Personalized Service**

Family-owned / operated  
**since 1906**

We accept these cards for your convenience:



**Addleman** DRUG STORE

Phone 475-2661 — Oberlin — Toll Free 1-800-794-3784  
Service and value are the cornerstones of our business.

Serving Decatur County for Over 100 Years!



Fred L. Hall  
Agent

An Independent Agent Representing Aflac

P.O. Box 328  
111 W. 12th St.  
Goodland, Kansas 67735  
(785) 890-8335 office  
(785) 890-8336 fax  
(785) 899-5930 residence  
fred\_hall@us.aflac.com  
aflac.com