

May is Beef Month

WE SALUTE OUR BEEF PRODUCERS

Did you know?

Kansas has 47.2 million acres of farm ground; however, not all of this land can be used to grow crops. Cattle are the ideal mechanism for efficiently utilizing grasses and plants growing on the 18.3 million acres of Kansas pasture and rangeland. These acres are not suited for the production of cultivated crops and would be wasted if it were not for ruminants, such as cattle, turning these resources into essential protein and nutrients for human use.

Cattle consume 72% of the corn, 16% of the soybeans and 60% of the hay grown in Kansas.

Salute to Beef Producers!

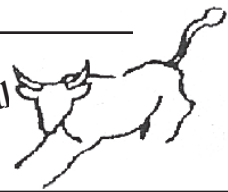
Quality Retail Beef & Pork
Custom Processing & Curing

We Process Your Meat the Way You Want It!

Ben-Lee Processing, Inc.
N Hwy 25, Atwood, KS 785-626-3732

Tri-State
BY-PRODUCTS, INC.

Daily Dead
Stock Removal



800-652-9320

We Salute
Area Beef Producers

Offering Only the Highest in Quality

At Willow Creek Meats, we take pride in providing you the highest quality corn-fed beef available anywhere...hand selected just for you! We offer whole, half or quarter beef selections. Everything we offer is source and age verified with NO added artificial hormones.

Quality and Service • Special Items

Call us Today

One of our team members will be more than happy to help you!



P.O. Box 280
McCook, NE 69001
1-877-4WCMEAT
(1-877-492-6328)
308-345-2949

www.willowcreekmeats.com

OUR HATS ARE OFF
TO THE
MEN AND WOMEN
OF THE
CATTLE BUSINESS.

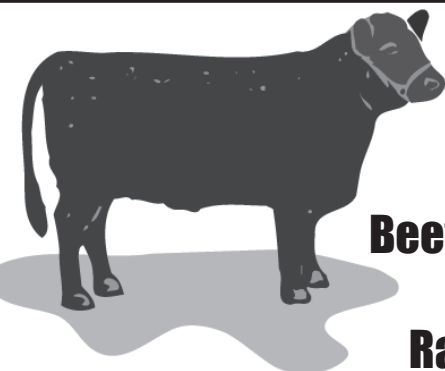
See us for all your insurance needs.

State Farm Insurance Companies



Ken Schultz, Agent
126 S. Penn — Oberlin
785-475-2911

Like a good neighbor,
State Farm is there.



Beef Producers
are a
Rare Breed!

**Fredrickson
Insurance Agency**

Your Home-Owned Insurance Agency

"For all your Farm Insurance needs."

We sell insurance,
but specialize in service!

183 S. Penn — Oberlin, Kansas — 785-475-3883

DECATUR COUNTY FEED YARD



Serving local farmers
and ranchers for 38 years

Warren Weibert, Owner/General Manager

785-475-2212

www.decaturfeyard.com

Oberlin Livestock Auction, Inc.

*We Salute the Area
Cattle Producers!*

Now in our
25th Year
of serving the
Cattle Industry in
Decatur County

**Cattle Sales
Monday
At Noon**

Oberlin Livestock Auction, Inc.

Sale Barn Phone — 785-475-2323

For consignment or to view livestock, call:

Jerry Fortin 785-475-2457

Daren Fortin 785-475-8912



800-638-9183
SID W. DOAK
308-345-3194

P.O. BOX 761
McCook, NE 69001

Millwright and
Crane Service
of
McCook,
Nebraska

ATTENTION GRAIN ELEVATOR MANAGERS

We have 5 highly skilled crews with over 40 years
of experience in EMERGENCY SERVICE!

We can help keep your grain facility
running and up-to-date.

Do you need a new elevator leg or
repairs to existing equipment?

We are an authorized dealer for all brands of elevators legs...

DRAG...CONVEYORS...AUGERS...GEAR...BOXES...MOTORS...

BEARINGS...STEEL BUILDINGS...GRAIN BINS...AERATION

COMPLETE STEEL INVENTORY

• 70 Ton Crane - 184' Pole Truck Service • Welding Service •
Skid Loader Service

Call us at: 1-800-638-9183

1-308-345-3194

Serving the
Area's Beef
Producers
with
Dependable
Service
for 12 years



We run between 10,000 - 11,000 head annually.

Sauvage Feed Yards LLC

RR1, Box 27 A

Danbury, NE 69026

785-896-2246

Farm Credit of Western Kansas

Serving the Beef Industry
with a variety of
financial services.

**We Salute the Men and Women
of the Beef Industry.**

375 S. Range — Colby, Kansas

1-800-657-6048

