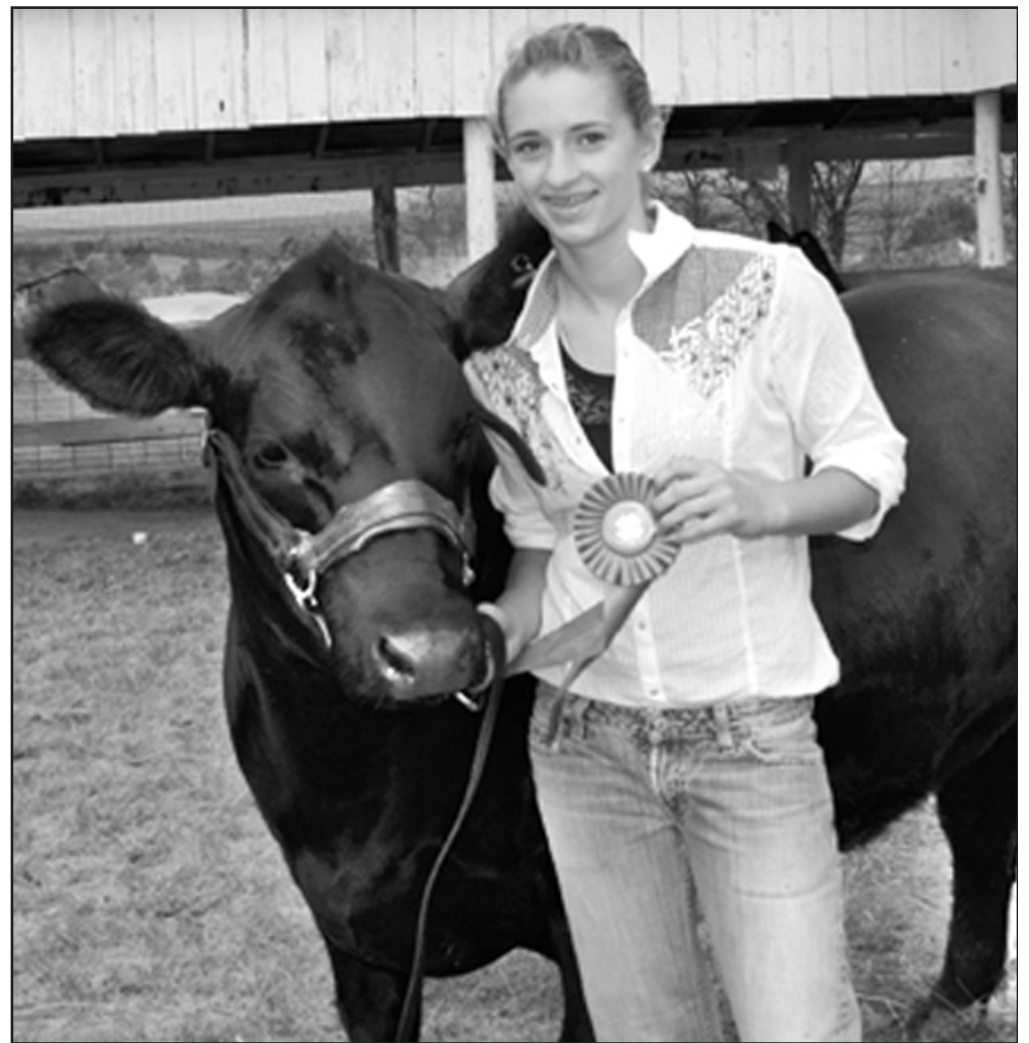




WITH HIS RESERVE GRAND CHAMPION ribbon in hand, Gatlin Hissong (above) stood beside his steer. Alexis Hissong (right) posed with her grand champion market beef in the intermediate division.



# Youngsters show steers, pigs,

B,B—Anna Carter B,P—Clayton Carter B,B—Isabel Grafel B,P—Matthew Helm B,PRG—KeAnn Jacobs P,B,PRG,P,GC,B—Annamarie Larue P,P,GC,B—Jacob Larue P,GC,P—Sage Lohofener P,PRG—Sierra Lohofener P,PRG—Erin May B,R,P,GC—Hannah May P,RG,P,GC,P,GC—Ryan May B,P,GC—Kira Meitl B,PRG—Elizabeth Nedland B,B,P,B—Britta Noren B,P,RG,P,P,GC—David Noren P—Michael Noren P,RG—Cheyanne Soderlund P,R,B,B—Jamine Soderlund B—Jean Soderlund B,P

4-H BOOTH & BANNER  
Maverick B,GC—Stick-to-It B

4-HENTOMOLOGY/GEOLOGY/FOR-

## ESTRY/WILDLIFE

Ryan May P,GC—Elizabeth Nedland P,GC,P,PRG,P,GC—Cheyanne Soderlund P,RG

## 4-H EDUCATIONAL/SELF DETERMINED

Zach May B

## 4-H FLOWER SHOW

Jacob Helm P,B,P,RG—Matthew Helm B,P,GC—Timothy Helm B,B—Cheyanne Soderlund P,P,B,P,B

## 4-H PHOTOGRAPHY

Isaac Carman B,B,P,P—Patience Carman B,B,B,R—Jacob Helm B,B,R,B—Timothy Helm B,B,B,B—KeAnn Jacobs P,GC,P,P,P—Erin May P,GC,P,P,P—Ryan May P,B,P,P—Kira Meitl P,RG,B,P,P—Elizabeth Nedland P,P,P,P—Hunter Nedland P,P,P,P—Dustin Nichols B,RG,R,P—Britta Noren P,GC,B,P—David Noren P,B,P—Michael Noren B—Gatlin Reichert P,P,P,P—Jamie Soderlund B,B—Dakota Tate B,P—Brittany Urban B,R—Ashley Witt B,P—Whitney Witt B,P,RG,R,P

## 4-H WOODWORKING

Isaac Carman B—Jacob Helm B—Timothy Helm B—Zach May P,GC

## 4-H RABBIT/POULTRY

Emily Larson P,P,B,P—Dustin Nichols P,P—David Noren P,GC,B—Celianna Shobe B,P,RG,R,R,B,P,GC—Evan Shobe P,P,B,B,P,P,RG,B

## 4-H GOATS SHOWMANSHIP

Chris Anderson B,RG, INT. DIVISION—Gabe Anderson B, INT. DIVISION—Samantha Anderson B,GC, SR DIVISION—Emily Larson B,GC, INT. DIVISION—Mackenzie Urban B,GC JR DIVISION

## MARKET

Chris Anderson B, GC INT. DIVISION—

## Congratulations 4-H'ers

Bring your digital Fair photos in  
for instant photo processing!

## WARD DRUG STORE



Kurt Vollertsen

142 S. Penn — Oberlin

Phone 785-475-2285 or Toll Free 1-800-698-5757

M-F: 8:30 a.m. - 6 p.m. ~ Sat: 8:30 a.m. - 3 p.m.



## Coffee, Tea and Me

"Where friends meet"



159 S. Penn Avenue, Oberlin, Kansas 67749

785-475-2069

9 a.m. to 3 p.m., Tuesday – Saturday

- Coffee bar and espresso, with indoor seating or take out
- Lunch special 11:30 until gone on Tuesday thru Friday (Call me!)
- Biscuit and Sausage gravy Saturday, 9 a.m. til...
- Ice cream waffle cones, cold drinks and more
- Covered garden patio seating available  
(Smoking area)



Congratulations to our Area 4-H'ers on your hard work!