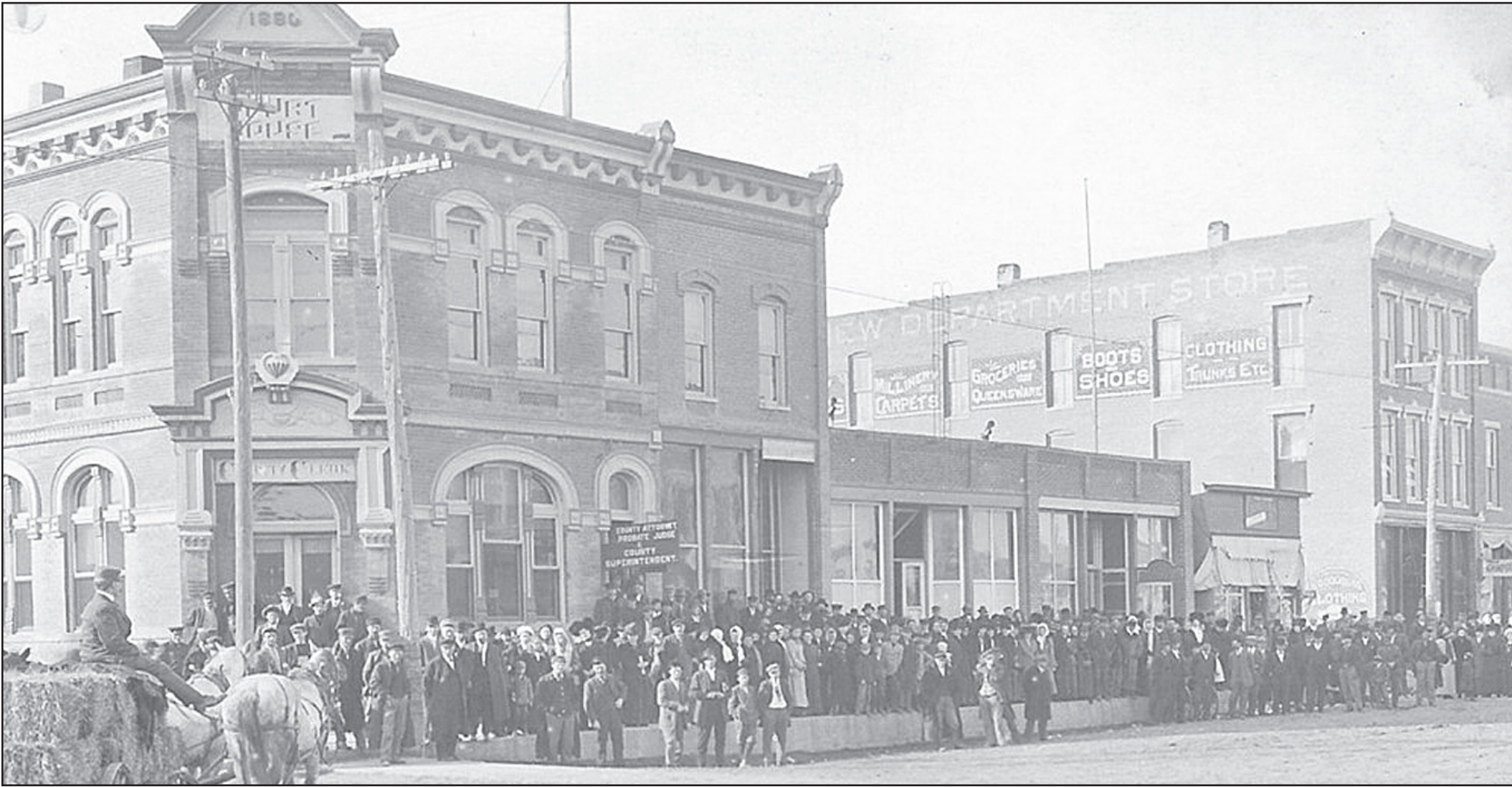


Looking back...



DECATUR COUNTY offices were housed at the original Bank of Oberlin (above) building, at the northwest corner of Penn Avenue and Hall Street, before the courthouse was built in 1926. The historic building is now the LandMark Inn. The first brick

school (below) for elementary and high school students was on what is now the upper playground of Oberlin Elementary School.



Oberlin changes over past 125 years

By MARY LOU OLSON
ml.olson@nwkansas.com

Whether you're a native or a transplant to Oberlin, lots of changes and improvements have come to our town during the past 125 years.

When the early settlers arrived, there were no businesses or homes, but as time went on, sod homes were replaced with frame structures. Many downtown businesses were built as beautiful brick structures, some of which still stand.

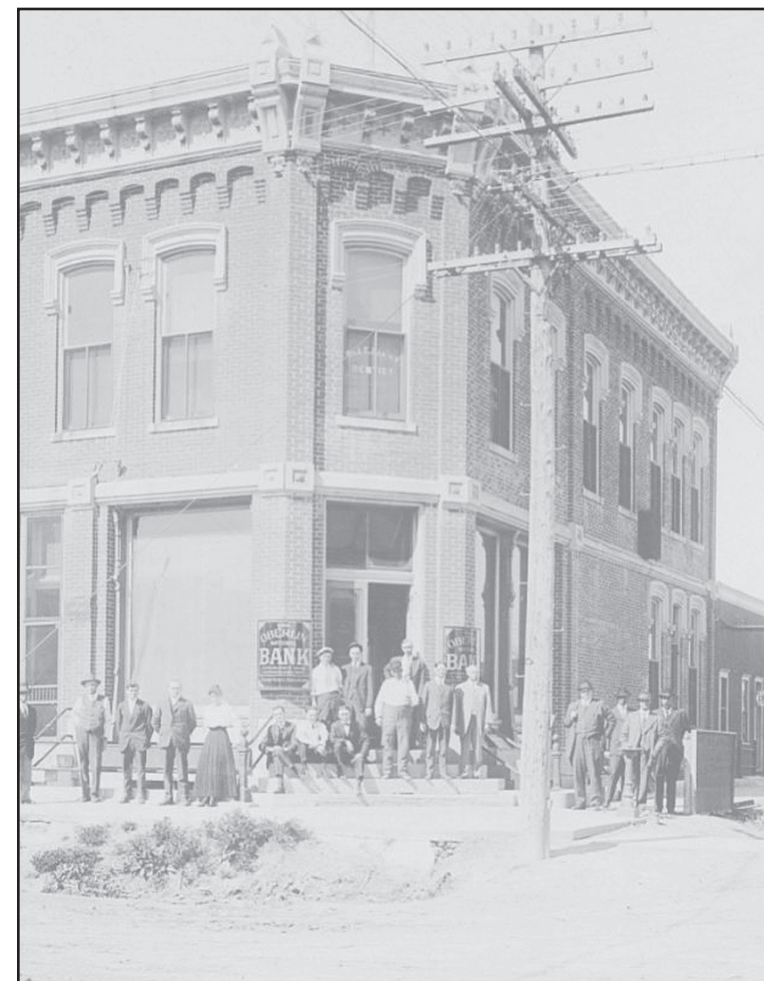
Saturday night was the "big night" in the old days for many years, when farmers and their families took their weekly bath, dressed up, then headed for Oberlin to do their

week's trading. Cream from cows that were milked twice a day, along with cases of eggs, were brought to creameries in town to "trade" in cash for groceries, clothing, hardware, feed and other items.

It was a fun time for the whole family: the men enjoyed visiting as they waited in the barber shops for a hair cut, the women caught up on the news from their friends and children played together.

After the shopping was done, many headed for the Chief or Wigwam theaters for the latest movie.

Life was simpler, but it was also very good "In the Good Old Days."



A LANDMARK IN OBERLIN for many years was the Oberlin National Bank, which later reorganized and became the Decatur County National Bank at the southwest corner of Penn Avenue and West Hall. It was replaced by the present structure, which today houses The Bank.



EARLY DOWNTOWN OBERLIN viewed from the south end of Penn Avenue boasted Foster Lumber Co., Anderson and Son Hardware and the Decatur County National Bank on the west side. South of the courthouse on East Hall (far right)

was the Oberlin Sale Pavilion, at the present location of the post office and telephone office. The east side of South Penn Avenue included (from left) Oberlin Motor Co., Scott Produce and the Paddock Seed House.

Oberlin through the years