

# May is Beef Month

## We salute our beef producers

For Kansas farmers and ranchers, the start of summer includes green grass, newborn calves and hard work to produce safe, nutritious and wholesome beef for consumers around the world. With 6.3 million cattle on ranches and farms in the state, Kansas is regarded as the center of beef cattle country, and Gov. Sam Brownback recently declared May as the 27th annual Kansas Beef Month. More than 30,000 beef producers from across the state invite families to celebrate Kansas Beef Month by enjoying a mouthwatering steak from the grill.

**Kansas Beef Council**  
**Kevin Thielen**

### DECATUR COUNTY FEED YARD



Serving local farmers  
and ranchers for 38 years  
Warren Weibert, Owner/General Manager  
**785-475-2212**  
[www.decaturfedyard.com](http://www.decaturfedyard.com)

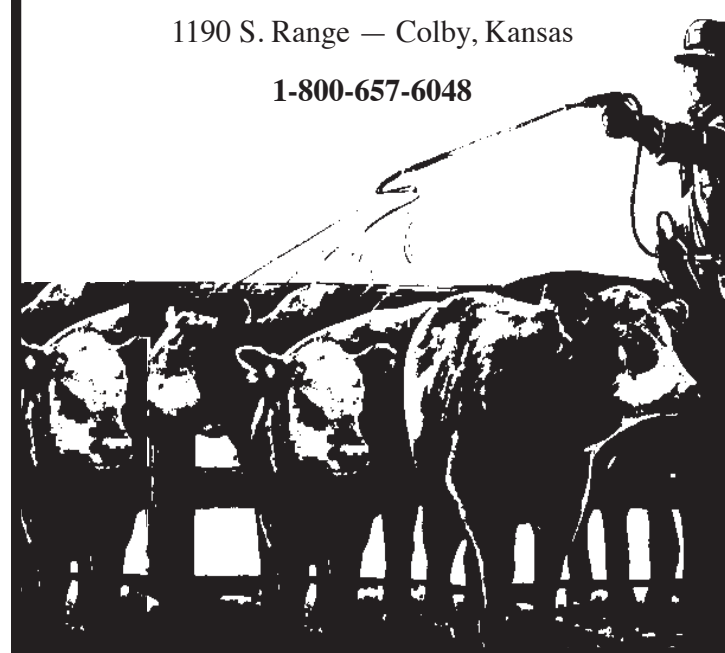


**FARM CREDIT  
OF WESTERN KANSAS**

*Financing ag for generations.*

*Serving the Beef Industry  
with a variety of financial services.*  
**We Salute the Men and Women  
of the Beef Industry.**

1190 S. Range — Colby, Kansas  
**1-800-657-6048**



#### Offering Only the Highest in Quality

At Willow Creek Meats, we take pride in providing you the highest quality corn-fed beef available anywhere...hand selected just for you! We offer whole, half or quarter beef selections. Everything we offer is source and age verified with NO added artificial hormones.

**Quality and Service • Special Items**  
USDA Inspected



**Call us Today**

One of our team members will be more than happy to help you!

P.O. Box 280  
McCook, NE 69001

(877) 4WCMEAT  
(877) 492-6328

308-345-2949  
[www.willowcreekmeats.com](http://www.willowcreekmeats.com)



### Coyote Ridge Ranch

*Registered Yearling Gelbvieh  
and Balancer Bulls Blacks and Reds*



**Governor Ozz Ext**

**Kendal Fisher**  
(785) 470-7461

•16 miles south of McCook, Nebraska

**Sires Include:**

- IM Beef
- Governor Ozz Ext
- 5K Objective
- Ref. D. 552
- State Line Ship

### KETTERL'S 5 K ANGUS

Calving Ease

Growth

**SELLING REGISTERED YEARLING ANGUS BULLS**



Image Maker

**Vernon Ketterl**  
(785) 475-3636



Performer

**Todd Ketterl**  
(785) 470-7208

All with top carcass performance

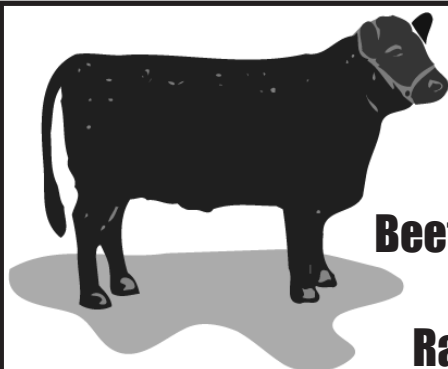
**SIRES INCLUDE**  
Coach S10  
Bennett Performer  
HA Image Maker 0415  
High Country 81  
Rainmaker P175  
WK One Way  
WK Rocket

Serving the  
Area's Beef  
Producers  
with  
Dependable  
Service  
for years



We run between  
10,000 - 11,000 head annually.

**Sauvage Feed Yards LLC**  
1169 EE Lane  
Danbury, NE 69026  
785-896-2246



**Beef Producers  
are a  
Rare Breed!**

**Fredrickson  
Insurance Agency**  
Your Home-Owned Insurance Agency

*"For all your Farm Insurance needs."*

**We sell insurance,  
but specialize in service!**

183 S. Penn — Oberlin, Kansas — 785-475-3883

### RICK NEMETH

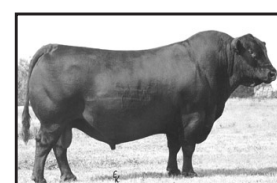
**(200) 18 MO. OLD REGISTERED  
ANGUS BULLS FOR SALE ON FARM**

SAV  
NET  
WORTH



Ludell, Kansas  
13 miles northeast  
of Atwood, Kansas

785-322-5505  
785-626-4309



SAV  
FINAL  
ANSWER

Bulls are in the top 2% of the breed for both weaning and yearling EPD's.  
Over 60 of these bulls are embryo transplant bulls from the top AI sire and donor cows of the breed.

2.0 55 23 98 average  
EPD's on Nemeth bulls.

**Free Delivery  
and Boarding**