

# Sports



**AT A LITTLE LEAGUE GAME** last Tuesday, Alex Eskew (left) stood ready to swing at a pitch. He plays on the Ron's Applying Service team. Adric Ray (above) waited on the pitcher's mound.

— Herald staff photo by Kimberly Davis

# Notice

**Due to replacing water lines, there will be water shut off intermittently from Hall Street to Cass Avenue and Commercial south to Mill Street.**

**30' x 60' x 12' Open Sided Building \$14,800**



Five 12' Open Bays  
3' Overhang on front side

Prices include: DELIVERY & INSTALLATION on your level site. Travel charges may apply

Experience the QSI Advantage

- Free Estimates
- Free On-Site Consultation
- Fully Insured
- 5-yr Workmanship Warranty
- Pre-engineered for code laws
- Licensed ICC General Contractor
- 3-Ply Laminated Posts (60 year warranty)
- Steel Roof and Sides (40 yr. warranty)
- 16 colors available
- 8' o/c Post Spacing
- 4' o/c Truss Spacing
- 90 MPH Wind Load 30lb Truss Load
- Site Preparation available



Quality Structures, Inc.

**Material Only Kits Now Available!**  
[www.qualitystructures.com](http://www.qualitystructures.com) • (800) 374-6988

**See us at the 3i Show, Booth I-256, Expo Center, Dodge City, KS July 12-14**

**480+/- ACRES NORTON CO, KS CROPLAND & GRASS LAND AUCTION**

**FRI., JULY 20, 2012 @10:30 AM, CDT**

**AUCTION LOCATION:**

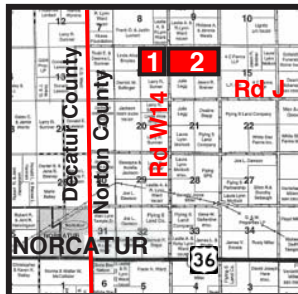
St. Francis Parish Hall, Norton, Kansas

**SELLERS:** Schulte Trusts, et al.

Land will be offered in two tracts and combination of tracts.

**LEGAL DESCRIPTIONS:**

**TRACT 1:** NE/4 of 17-2-25-85.6 ac cropland, 60.2± ac grass & 14.2 ac CRP  
**TRACT 2:** N/2 of 16-2-25 - 217.0 ac cropland & 103.0± grass



This is an excellent opportunity to invest in three contiguous quarters. Land is located in an area of good rainfall & crop history. There is a water well in pastures on both tracts, plus on a pond on Tract 2! Tract 1 is excellent habitat for deer.

**INTERNET BIDDING AVAILABLE!**

For a Virtual Tour visit

[www.farmandranchrealty.com](http://www.farmandranchrealty.com)

**FARM & RANCH REALTY, INC.**

**Scotty Legere**, Listing Agent (785-650-9970)  
1420 W. 4<sup>TH</sup> • COLBY, KS 67701

Toll Free: 1-800-247-7863

**DONALD L. HAZLETT**, Broker/Auctioneer

"When you list with Farm & Ranch, it's as good as SOLD!"

**SHRINE BOWL, EMPORIA, KS, 7/28/12**

**Family Fun, Excitement, and Activities Galore!**

- \* 2M Run with All-Star CC
- \* Free Shrine Parade
- \* High School Football Combine/Clinic
- \* All-Star Cheerleaders
- \* All-State Marching Band
- \* and All-Star High School Football.

Information: 800-530-5524 or [ksshine.com](http://ksshine.com)

Benefiting: SHRINERS HOSPITALS FOR CHILDREN

**D&R PUMP SERVICE, LLC**

Domestic, Stock, Windmill,  
Solar, Submersible, Irrigation,  
Repair and Sales.

With over 30 years of experience!

Ron Shipley - (785) 675-1422 state licensed  
Devan Castle (785) 657-7217 Kansas and Nebraska member of the Kansas Groundwater Association

**Roofing & Construction**

Serving all of  
Western Kansas



(785) 470-7365



1-800-732-5505  
1305 Hwy 6/34, Cambridge  
[www.trivalleyhealth.com](http://www.trivalleyhealth.com)

*Surgical Services*

*Skilled Surgeons.  
Highly Trained Staff.  
State of the Art Facility.*

Tri Valley Surgical Services is a full service surgery unit offering inpatient surgeries as well as a full line of outpatient procedures for residents of southwest Nebraska and northwest Kansas. Featuring the quality of care found in major medical centers combined with individual treatment and hospitality, you and your family can rest assured you'll be in trusted hands at Tri Valley.

**Ear Nose & Throat**



V. Richard Bowen, MD  
800-348-0368

**Endoscopy**



Lennie Deaver, MD  
308-697-1172

**General Surgery**



W. Thomas Sorrell, MD  
308-697-1172

**Gynecology**



Michele Krieger, MD  
308-697-1172



Walt Weaver, MD  
308-697-1172

**Ophthalmology**



T.J. Clinch, MD  
308-865-2760

**Orthopedic Surgery/  
Total Joint Replacement**



Chris Wilkinson, MD  
308-865-1448

**Orthopedic Surgery/  
Hand**



Mark Buchman, MD  
308-865-1448

**Pain Management**



Kevin Balter, MD  
308-236-0507

**Podiatry**



Greg Burns, DPM  
308-234-2596



Robert Hinze, DPM  
877-345-3668

**Urology**



Scott Howe, MD  
308-697-1172

