



CITIZENS LINED THE STREETS (above) as the circus parade came down Penn Avenue. Looks like nearly the whole town turned out. Many buildings look much the same today, with

the exception of the renovations to the three-story Morrison brick, now a one-story building which houses La De Da Beauty Salon. — Last Indian Raid Museum Collection

Early photos show view of Old Oberlin

By RAMELL TAYLOR
rtaylor@nwkansas

Whether it's new businesses coming to town, dirt streets that later were paved or the type of transportation, Oberlin has undergone more than one complete makeover since the late 1800s.

Businesses on Penn Avenue, Commercial Street and Hall Street downtown today are much different from those a century ago and more.

Dick Carman, a board member of the Last Indian Raid Museum, gives a slide-show presentation of pictures of Oberlin in the late 1800s, some of which are offered on this page.

The west side of Penn between Hall and Commercial used to be home to businesses including J. Wallen and Sons Dry Goods and Grooming, Sappa Hardware and the Old Reliable Land Office.

A downtown panorama of Penn Avenue at Hall in 1907 shows the old courthouse (built as a bank; now the LandMark Inn). Across the street from a department store was Hayes Hardware, with a restaurant to the right.

On North Penn, the old Oberlin Opera House, later known as the Chief Theater, stood in the early 1900s where the Golden Age senior center Sunflower Cinema theatre and recreation complex is today.

The Wigwam Theatre, J.P. Noble's law office and the American Variety store shared a building on the west side of Penn south of Commercial.

In the early 1900s, the J.J. Jackson Elevator and Oberlin National Bank were on the west side of South Penn.

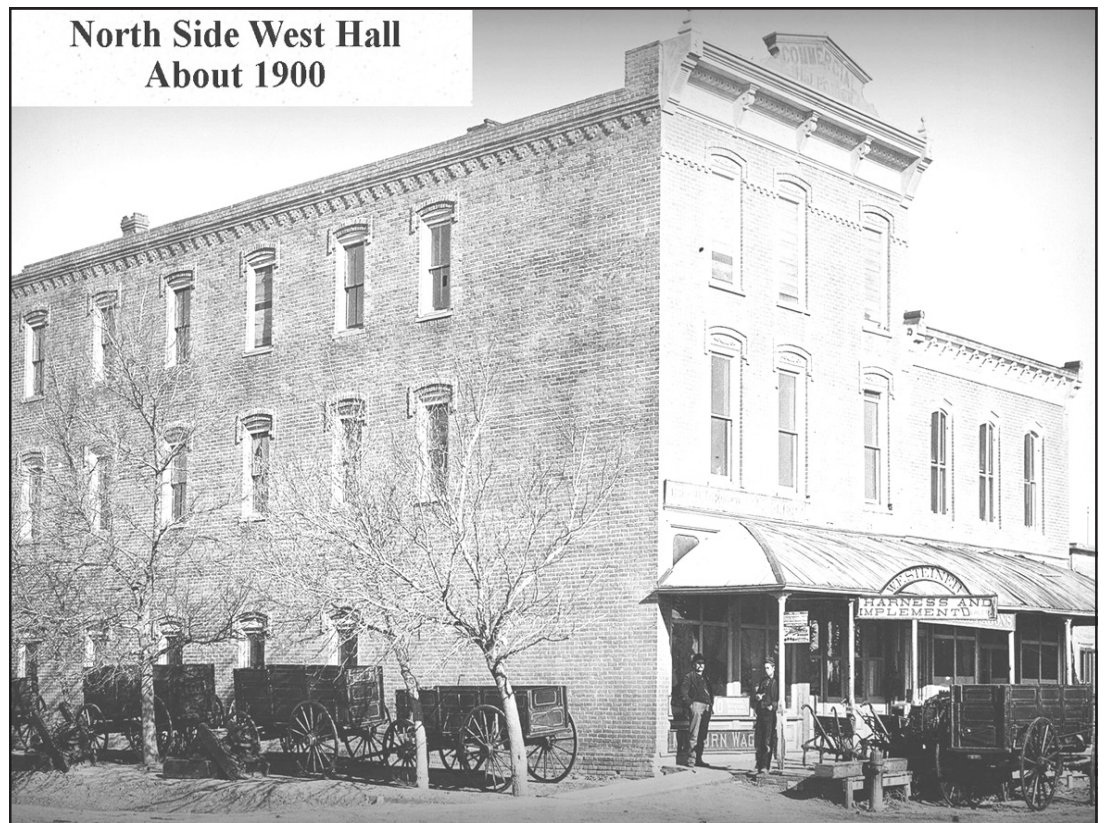
The east side of Penn had the OK Livery and Feed, Oberlin Meat Market and Lippincott and Beal's Flour and Feed store.

People got their rides from the horse-and-mule dealer on the corner of West Hall and Rodehaver Avenue. On the north side of West Hall were Steiner's Harness and Implements and The Oberlin Herald.

A slide of East Hall showed the Briggs Hotel next to a boot and shoe store.

Commercial west of Penn was home to J.A. Quinn's implement store from 1890 to 1910, where Raye's Grocery is today.

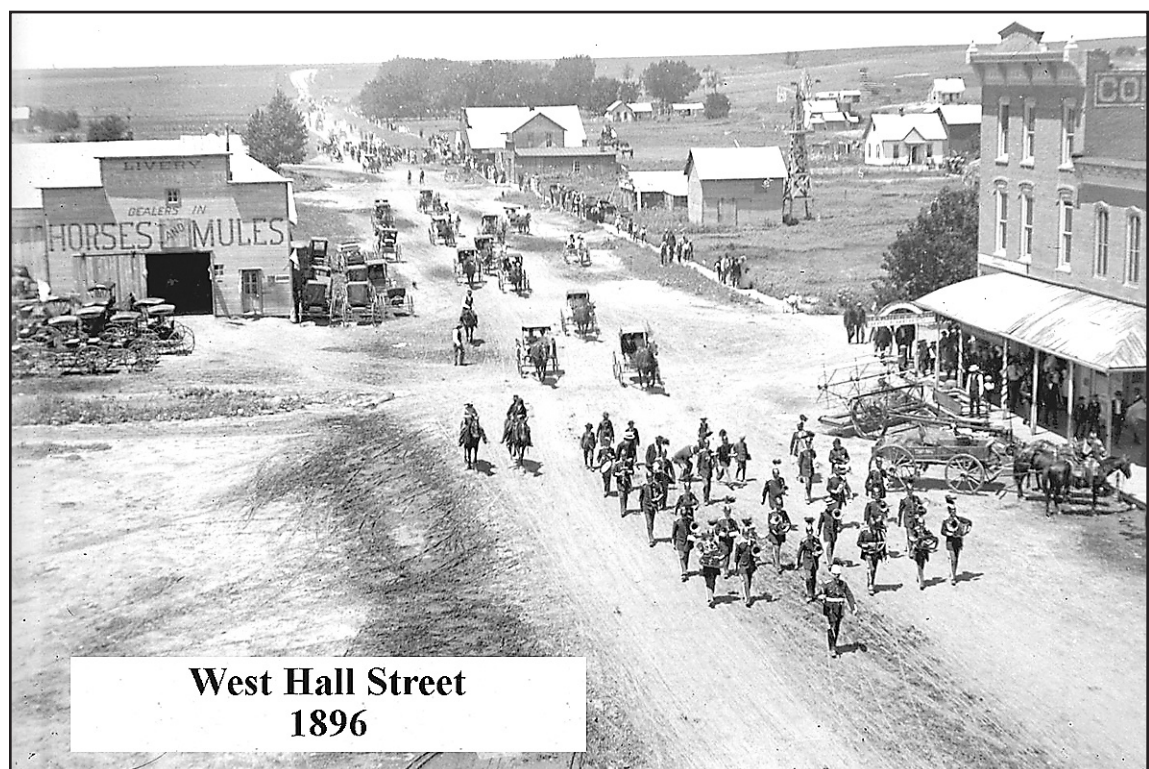
North Side West Hall About 1900



WEST HALL STREET (above) in the late 1890s. The Commercial Hotel, on the second story of the Steiner's Harness and Implements building, was one of the first buildings to have running water in bathrooms. The Old Settlers Parade (below) made its way around the building.



THE OBERLIN MEAT MARKET (above), next to the Lippincott and Beal Flour and Feed Store, was convenient for farmers in the 1890s. The Oberlin Cash Store (below) was a grocery and variety store and the Odell Hotel. The structure later burned and was replaced by the Hotel Oberlin, and this now is the site of Centennial Park and Plains Implement.



West Hall Street 1896



— photos from Oberlin's Last Indian Raid Museum